

## Product datasheet for **RG220708**

### Zinc finger protein 287 (ZNF287) (NM\_020653) Human Tagged ORF Clone

#### Product data:

Product Type:	Expression Plasmids
Product Name:	Zinc finger protein 287 (ZNF287) (NM_020653) Human Tagged ORF Clone
Tag:	TurboGFP
Symbol:	Zinc finger protein 287
Synonyms:	ZKSCAN13; ZSCAN45
Mammalian Cell Selection:	Neomycin
Vector:	pCMV6-AC-GFP (PS100010)
E. coli Selection:	Ampicillin (100 ug/mL)



[View online »](#)

**ORF Nucleotide Sequence:**

>RG220708 representing NM\_020653  
 Red=Cloning site Blue=ORF Green=Tags(s)

TTTTGTAATACGACTCACTATAGGGCGGCCGGAATTCGTCGACTGGATCCGGTACCGAGGAGATCTGCC  
 GCC**CGCATCGCC**

ATGAACAGTTCTTCACGTTCTCAAATCCTTCTAAGGTGGAAGTCAGACAAGGCTCAGAGTGGACCCTACA  
 ATGTTGAGAAGGAAATCCTTACTTCAAGATTCTTGCGTGACACTGAGACCTGTCGACAGAATTTTAGGAA  
 TTTTCCATACCCAGACCTGGCTGGTCTCGAAAGGCATTGAGTCAACTCCGAGAGCTCTGCCTTAAGTGG  
 CTGAGACCTGAGATTCACTCAAAGGAACAAATTTGGAGCTGCTGGTGTGGAGCAATTCCTGACCATCC  
 TGCCTGGTGGGTTAGGACTTGGGTAAGTCCCAGTATCCAGAGAGCAGCGAGGAAGCAGTGACTCTGGT  
 GGAGGATTTGACTCAGATTCTAGAAGAGGAAGCTCCTCAAACCTACCTTTCCCAAGATACCCAGAG  
 GAAGACCCAGAGGAAAACATGCTTCCAGACAGGATGGTAAATGACTTGGTGACCAAAGAATCGATGA  
 CATTCAAAGATGTGGCTGTAGACATACCCAGGAGGACTGGGAGTTAATGCGTCTGTGCAGAAGGAATT  
 ATACAAGACTGTGACGTTACAGAACTATTGGAACATGGTTTCTCTGGGACTTACAGTGTACAGACCACT  
 GTGATCCCATATTGGAAGAACCATGGATGGTGATAAAAAGAAATTTAGAAAGCCCTAGTCCAGAATGGG  
 AAATAAGCCCAAGCATGTACTCCAGTGGAGGATATGTCTAAACTCACAAAGGAAGAAACCCATACCAT  
 CAAATTAGAAGACTCATATGACTACGATGATAGACTAGAGAGGCGAGGAAAAGGTGGCTTCTGGAAAATT  
 CACACTGATGAAAGAGGTTTCAGTTTGAAGTCAGTCTTTCAAGAATATGATCCTACAGAAGAATGTC  
 TTAGTAAATATGATATATAGAAAATATTTTGAAAAGCATTCAAACCTAATTGTACAGTTTGATACCCA  
 ATTAGATAATAAACTTCTGTGTATAATGAAGGCAAGGCAACCTTCAATCATGTCTCATATGGTATTGTA  
 CATAGGAAAATACTTCTGGAGAGAAGCCTTACAAGTGTAAATGTGTGGGAAAAAATTTAGGAAATACC  
 CATCCCTCCTGAAACACCAAAGTACCCATGCCAAAGAGAAATCGTATGAATGTGAAGAATGTGGAAAGA  
 GTTTAGGCATATCTCATCCCTTATTGCACATCAGAGAATGCACACTGGAGAAAAACCATATGAATGCCAC  
 CAGTGTGGTAAAGCCTTACGCCAGCGTGCACACCTTACTATACATCAGAGAATTCATACTGGAGAGAAAC  
 CCTATAAGTGTGATGACTGTGGGAAAGACTTCAGTCAGCGTGCACACCTTACCATCCATCAAAGGACACA  
 TACTGGAGAGAAACCATATAAATGCTTGGAAATGTGGTAAAACCTTCAAGTCATAGTTCATCACTGATTAAT  
 CATCAGAGAGTTCATACTGGAGAAAAACCTTATATGCAATGAATGTGGGAAGACTTTCAGTCAGAGTA  
 CACACCTTCTTACAGATCAAAAAATACATACTGGGAAGAAACCATATAAATGCAATGAATGTTGGAAAGT  
 GTTTAGTCAGAGTACTTACCTTATTCGACATCAGAGAATTCATTCTGGAGAGAAGTGTATAAATGTAAT  
 GAATGTGGAAAAGCCTTTGCTCATTCTCAACCCTTATTCACATCAAACCACTCACACTGGAGAGAAAT  
 CCTATATATGTAATATATGTGGGAAAGCCTTACGCCAGAGTGCAATCTTACTCAACATCATAGAACACA  
 TACTGGAGAGAAACCATATAAATGCAGTGTGTGTGGGAAAGCATTAGCCAGAGTGTGCACCTTACTCAA  
 CATCAGAGGATTCATAATGGAGAAAAACCTTTAAATGCAATATATGTGGGAAAGCATATAGACAAGGCG  
 CAAATCTTACTCAGCATCAAAGGATTCATACTGGAGAAAAACCTTATAAATGTAATGAATGTGGGAAAGC  
 TTTCAATTTATTCCTCATCACTTAATCAACATCAGAGAATCATACTGGAGAGAGACCCTATAAATGTAAT  
 GAATGTGATAAGGATTTAGCCAGAGAACATGCCTTATTCAACACCAGAGAATTCACACAGGAGAGAAAC  
 CCTATGCATGTCGTATATGTGGTAAAACCTTACCCAGAGTACAAACCTTATTGAGCATCAACGTGTTCA  
 TACAGGTGCCAAACATCGTAAT

**ACGCGT**ACGCGGCCGCTCGAG – GFP Tag – GTTTAA

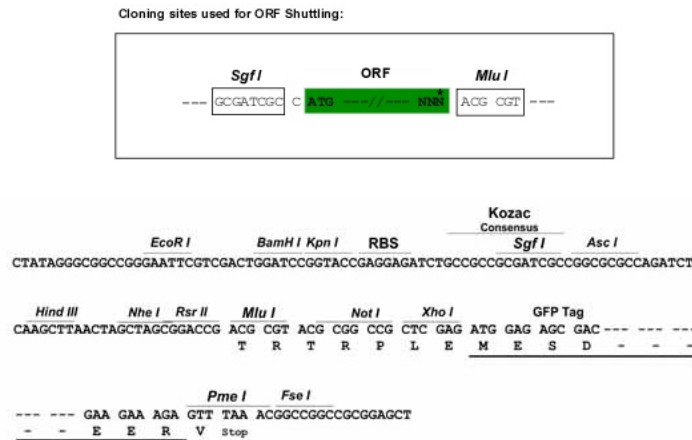
**Protein Sequence:** >RG220708 representing NM\_020653  
 Red=Cloning site Green=Tags(s)

MNSSRSQILLRWKSDKAQSGPYNVEKEILTSRFLRDTETCRQNFNFPYDLAGPRKALSQLRELCLKW  
 LRPEIHSKEQILELLVLEQFLTILPGEVRTWVKSQYPESEEAVTLVEDLTQILEEEAPQNSTLSQDTPE  
 EDPRGKHAFQTGWLNDLVTKESMTFKDVAVDITQEDWELMRPVQKELYKTVTLQNYWVMVSLGLTVYRPT  
 VIPILEEPWMVIKEILEGSPWETKAQACTPVEDMSKLTKEETHTIKLEDSYDYDDRLERRGKGGFWKI  
 HTDERGFSLSKSVLSQEYDPTTEELSKYDIYRNNFEKHSNLI VQFDTQLDNKTSVYNEGRATFNHVSYGIV  
 HRKILPGEKPYKCNVCGKKFRKYPSLLKHQSTHAKESYECEECKEFRHISL IAHQRMHTGEKPYECH  
 QCGKAFSQR AHLTIHQRIHTGEKPYKDDCGKDF SQR AHLTIHQRTHTGEKPYKLECGKTF SHSSSLIN  
 HQRVHTGEKPYICNECGKTF SQSTHLLQH QKIHTGKKPYKCNECWKVF SQSTYLIRHQRIHSGEKYKCN  
 ECGKAFASSTLIQHQTHTTGEKSYICNICGKAFS QSANLTQHHRHTHTGEKPYKCSVCGKAFS QSVHLTQ  
 HQR IHNGEKPFKCNICGKAYRQGANLTQHQR IHTGEKPYKCNECGKAFIYSSSLNQHQRTHTGERPYKCN  
 ECDKDFSQRTCLIQHQRIHTGEKPYACRICGKTF TQSTNLIQHQRVHTGAKHRN

TRTRPLE - GFP Tag - V

**Restriction Sites:** SgfI-MluI

**Cloning Scheme:**



**ACCN:** NM\_020653

**ORF Size:** 2262 bp

**OTI Disclaimer:** The molecular sequence of this clone aligns with the gene accession number as a point of reference only. However, individual transcript sequences of the same gene can differ through naturally occurring variations (e.g. polymorphisms), each with its own valid existence. This clone is substantially in agreement with the reference, but a complete review of all prevailing variants is recommended prior to use. [More info](#)

**OTI Annotation:** This clone was engineered to express the complete ORF with an expression tag. Expression varies depending on the nature of the gene.

**Components:** The ORF clone is ion-exchange column purified and shipped in a 2D barcoded Matrix tube containing 10ug of transfection-ready, dried plasmid DNA (reconstitute with 100 ul of water).

**Reconstitution Method:**

1. Centrifuge at 5,000xg for 5min.
2. Carefully open the tube and add 100ul of sterile water to dissolve the DNA.
3. Close the tube and incubate for 10 minutes at room temperature.
4. Briefly vortex the tube and then do a quick spin (less than 5000xg) to concentrate the liquid at the bottom.
5. Store the suspended plasmid at -20°C. The DNA is stable for at least one year from date of shipping when stored at -20°C.

**RefSeq:** [NM\\_020653.1](#), [NP\\_065704.1](#)

**RefSeq Size:** 3152 bp

**RefSeq ORF:** 2286 bp

**Locus ID:** 57336

**UniProt ID:** [Q9HBT7](#)

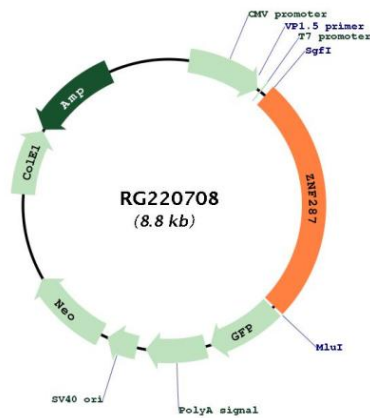
**Cytogenetics:** 17p11.2

**Domains:** KRAB, LER, zf-C2H2

**Protein Families:** Transcription Factors

**Gene Summary:** This gene encodes a member of the krueppel family of zinc finger proteins, suggesting a role as a transcription factor. Its specific function has not been determined. This gene is located near the Smith-Magenis syndrome region on chromosome 17. [provided by RefSeq, Jul 2008]

**Product images:**



Circular map for RG220708