

## Product datasheet for **RG220698**

### MAP4K1 (NM\_007181) Human Tagged ORF Clone

#### Product data:

Product Type:	Expression Plasmids
Product Name:	MAP4K1 (NM_007181) Human Tagged ORF Clone
Tag:	TurboGFP
Symbol:	MAP4K1
Synonyms:	HPK1
Mammalian Cell Selection:	Neomycin
Vector:	pCMV6-AC-GFP (PS100010)
E. coli Selection:	Ampicillin (100 ug/mL)



[View online »](#)

**ORF Nucleotide Sequence:**

>RG220698 representing NM\_007181  
 Red=Cloning site Blue=ORF Green=Tags(s)

TTTTGTAATACGACTCACTATAGGGCGGCCGGAATTCGTCGACTGGATCCGGTACCGAGGAGATCTGCC  
 GCC**CGGATCGCC**

ATGGACGTCGTGGACCCTGACATTTTCAATAGAGACCCCCGGGACCCTATGACCTGCTACAGCGGCTGG  
 GTGGCGGCACGTATGGGGAAGTCTTTAAGGCTCGAGACAAGGTGTCAGGGGACCTGGTGGCACTGAAGAT  
 GGTGAAGATGGAGCCTGATGATGATGTCTCCACCTTCAGAAGGAAATCCTCATATTGAAAACTGCCGG  
 CACGCCAACATCGTGGCCTACCATGGGAGTTATCTCTGGTTGCAGAACTCTGGATCTGCATGGAATTCT  
 GTGGGGCTGGTTCTCTCCAGGACATCTACCAAGTGACAGGCTCCCTGTCAGAGCTCCAGATTAGCTATGT  
 CTGCCGGGAAGTCTCCAGGGACTGGCCTATTTGCACTCACAGAAGAAGATACACAGGGACATCAAGGGA  
 GCTAACATCCTCATCAATGATGCTGGGAGGTGAGATTGGCTGACTTTGGCATCTCGGCCAGATTGGGG  
 CTACACTGGCCAGACGCCTCTTTTCATTGGGACACCCTACTGGATGGCTCCGGAAGTGGCAGCTGTGGC  
 CCTGAAGGGAGGATACAATGAGCTGTGTGACATCTGGTCCCTGGGCATCACGGCCATCGAACTGGCCGAG  
 CTACAGCCACCGCTCTTTGATGTGACCCCTCTCAGAGTTCTTCTCCTCATGACCAAGAGTGGCTACCAGC  
 CTCCCCGACTGAAGGAAAAGGCAAATGGTCCGGCTGCCTTCCACAACCTCATCAAAGTCACTCTGACTAA  
 GAGTCCCAAGAAACGACCCAGCGCCACCAAGATGCTCAGTCATCAACTGGTATCCAGCCTGGGCTGAAT  
 CGAGGCCCTGATCCTGGATCTTCTTGACAACTGAAGAATCCCGGGAAAGGACCCTCCATTGGGGACATTG  
 AGGATGAGGAGCCCGAGCTACCCCTGCTATCCCTCGGCGGATCAGATCCACCCACCGCTCCAGCTCTCT  
 GGGGATCCCAGATGCAGACTGCTGTGCGCGGCACATGGAGTTCAGGAAGCTCCGAGGAATGGAGACCAGA  
 CCCCCAGCCAACACCGCTCGCCTACAGCCTCCTCGAGACCTCAGGAGCAGCAGCCCCAGGAAGCAACTGT  
 CAGAGCTGTGACGATGACTATGACGAGTGGACATCCCCACCCCTGCAGAGGACACACCTCTCCACT  
 TCCCCCAAGCCCAAGTTCGGTTCCATCAGACGAGGGTCTGGGAGCATGGGGGATGATGGGCAGCTG  
 AGCCCCGGGGTGTGGTCCGGTGTGCCAGTGGGCCCCACCAAACAGCCCCGCTCTGGGCTCCCCAT  
 CCACCAGCAGCCCCACCTCACCGCCATTGACAACTCACTCTGGAACCCACCCCTCCCGGAGCTTGA  
 CAAGCCCCACTTCTGCCCCCAAGAAGAAAAGATGAAGAGAAAAGGATGTGCCCTTCTCGTAAAGTTG  
 TTCAATGGCTGCCCCCTCCGGATCCACAGCAGGCGCCTGGACACATCCCTCCACCAAGGACCAGCACC  
 TGCTCCTGGGGCAGAGGAAGGCATCTTATCCTGAACCGGAATGACCAGGAGGCCACGCTGGAAATGCT  
 CTTTCTAGCCGACTACGTGGGTGACTCCATCAACAACGTTCTCATGTCTCTCTCAGGAAAGACCCCC  
 CACCTGTATTCTCATAGCATCCTTGGCCTGCTGGAACGGAAGAGACCAGAGCAGGAAACCCCATCGCTC  
 ACATTAGCCCCACCGCCTACTGGCAAGGAAGAACATGGTTTCCACCAAGATCCAGGACACCAAAGGCTG  
 CCGGGCGTGTGTGGCGGAGGGTGCAGCTCTGGGGGCCGTTCTGTGCGGTGCATTGGAGACGTCC  
 GTTGTCTGCTTCAAGTGTACCAGCCATGAACAAATCCTGCTTGTCCGGCAGGTGCTGTTCCCACTGC  
 CGACGCTCTGTCCGTGTTCGCGCTGCTGACCGGGCCAGGCTCTGAGCTGCCCGTGTGTGCATCGCGT  
 GAGCCCCGGGCGGCCGGGAAGTCGGTGTCTTCCACACGGTGCCTTTGGCGCGCTCTTGTGCTGGCTG  
 GCGGAGATGAGCACCGAGCACAGGGGACCCGTGCAGGTGACCCAGGTAGAGGAAGATATGGTGATGGTGT  
 TGATGGATGGCTCTGTGAAGCTGGTGACCCGGAGGGTCCCCAGTCCGGGGACTTCGCACACCTGAGAT  
 CCCCATGACCGAAGCGGTGGAGGCCGTGGCTATGGTTGGAGTCACTTCCAGCCTTCTGGAAGCATGGA  
 GTGCAGGTGTGGCTCTAGGCTCGGATCAGCTGCTACAGGAGCTGAGAGACCCCTACCTCACTTTCCGTC  
 TGCTTGGCTCCCCAGGCTGGAGTGCAGTGGCACGATCTCGCCTCACTGCAACCTCCTCCTCCAGGTT  
 AAGCAATTCTCCTGCCTCAGCCTCCCGAGTAGCTGGGATTACAGGCCTG

**ACGGTACGCGGCCGCTCGAG** – GFP Tag – GTTAA

**Protein Sequence:** >RG220698 representing NM\_007181  
Red=Cloning site Green=Tags(s)

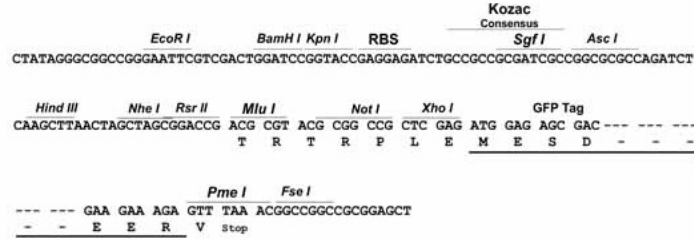
MDVVDPDIFNRDPRDHYDLLQRLGGGTYGEVFKARDKVSVDLVALKMKMEPDDVSTLQKEILILKTCR  
HANIVAYHGSYLWLQKLWICMEFCGAGSLQDIYQVTGSLSELQISYVCREVLQGLAYLHSQKKIHRDIKG  
ANILINDAGEVRLADFGISAQIGATLARRLSFIGTPYWMAPEVAVALKGGYNELCDIWSLGITAIELAE  
LQPPFLFDVHPLRVLFMTKSGYQPPRLKEKGKWSAAFHNFIKVTLTKSPKKRPSATKMLSHQLVVSQPGLN  
RGLILDLLDKLKNPGKGPSIGDIEDEEPELPPAIPRRIRSTHRSSLGIPDADCCRRHMEFRKLRGMETR  
PPANTARLQPPRDLRSSSPRKQLSESSDDYDDVDIPTAEDTPPPLPPKPKFRSPSDEGPGSMGDDGQL  
SPGVLVRCASGPPNSPRPGPPPSTSSPHLTAHSEPSLWNPPSRELDKPPLLPPKKEKMKRKGCALLVKL  
FNGCPLRIHSTAATHPSTKDQHLLLGAEEGIFILNRNDQEATLEMLFPSRTTWVYSINNVLMSLSGKTP  
HLYSHSILGLLERKETRAGNPIAHISPHRLLARKNMVSTKIQDTKGCRAACVAEGASSGGPFLCGALET  
VVLLQWYQPMNKFLLVRQVLFPLPTPLSVFALLTGPGESELPVAVIGVSPGRPGKSVLFHTVRFGALSCWL  
GEMSTEHRGPVQVTQVEEDMVMVLMDGSVKLVTPGSPVRLRTPPEIPMTEAVEAVAMVGGQLQAFWKHG  
VQVWALGSDQLLQELRDPTLTFRLLGSPRLECSGTISPHCNLLLPSSNSPASASRVAGITGL

TRTRPLE - GFP Tag - V

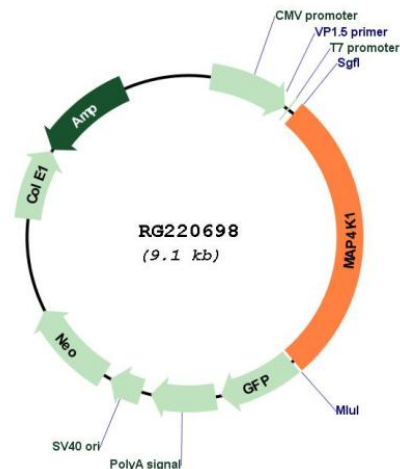
**Restriction Sites:** SgfI-MluI

Cloning Scheme:

Cloning sites used for ORF Shutting:



## Plasmid Map:



ACCN: NM\_007181

ORF Size: 2499 bp

OTI Disclaimer: The molecular sequence of this clone aligns with the gene accession number as a point of reference only. However, individual transcript sequences of the same gene can differ through naturally occurring variations (e.g. polymorphisms), each with its own valid existence. This clone is substantially in agreement with the reference, but a complete review of all prevailing variants is recommended prior to use. [More info](#)

OTI Annotation: This clone was engineered to express the complete ORF with an expression tag. Expression varies depending on the nature of the gene.

Components: The ORF clone is ion-exchange column purified and shipped in a 2D barcoded Matrix tube containing 10ug of transfection-ready, dried plasmid DNA (reconstitute with 100 ul of water).

Reconstitution Method:

1. Centrifuge at 5,000xg for 5min.
2. Carefully open the tube and add 100ul of sterile water to dissolve the DNA.
3. Close the tube and incubate for 10 minutes at room temperature.
4. Briefly vortex the tube and then do a quick spin (less than 5000xg) to concentrate the liquid at the bottom.
5. Store the suspended plasmid at -20°C. The DNA is stable for at least one year from date of shipping when stored at -20°C.

RefSeq: [NM\\_007181.6](#)

RefSeq Size: 2732 bp

RefSeq ORF: 2502 bp

Locus ID: 11184

UniProt ID: [Q92918](#)

<b>Cytogenetics:</b>	19q13.2
<b>Domains:</b>	pkinase, CNH, TyrKc, S_TKc
<b>Protein Families:</b>	Druggable Genome, Protein Kinase
<b>Protein Pathways:</b>	MAPK signaling pathway
<b>Gene Summary:</b>	Serine/threonine-protein kinase, which may play a role in the response to environmental stress. Appears to act upstream of the JUN N-terminal pathway. May play a role in hematopoietic lineage decisions and growth regulation. Able to autophosphorylate. [UniProtKB/Swiss-Prot Function]