

Product datasheet for **RG220686**

RNF38 (NM_194328) Human Tagged ORF Clone

Product data:

Product Type:	Expression Plasmids
Product Name:	RNF38 (NM_194328) Human Tagged ORF Clone
Tag:	TurboGFP
Symbol:	RNF38
Mammalian Cell Selection:	Neomycin
Vector:	pCMV6-AC-GFP (PS100010)
E. coli Selection:	Ampicillin (100 ug/mL)
ORF Nucleotide Sequence:	>RG220686 representing NM_194328 Red=Cloning site Blue=ORF Green=Tags(s)

TTTTGTAATACGACTCACTATAGGGCGGCCGGAATTCGTCGACTGGATCCGGTACCGAGGAGATCTGCC
GCC**CGATCGCC**

ATGGCTTGAAGAGTGAAGATAGTCCAAGTCTAAGAGACAGCGCCTCTCTCATTGAGTCTTTGATTATA
CATCAGCATCACCAGCTCCCTCACCACCAATGCGACCATGGGAGATGACATCAAATAGGCAGCCCCCTTC
AGTTTCGACCAAGCCAACATCACTTCTCAGGGGAACGATGCAACACACCTGCACGCAACAGAAGAAGTCT
CCTGTGAGGCGCCAGAGAGGAAGAAGGGATCGTCTGTCTCGACATAATTCATTAGTCAAGATGAAAAT
ATCACCATCTCCCTTACGCACAGCAGCAAGCAATAGAGGAGCCTCGAGCCTCCACCCTCCGAATGTATC
TCCCCGTCTGCTACATCCTGCTCATCCACCCAGCAGAATGCAGTCATGGTTGACATACATGATCAG
CTCCATCAAGGAACAGTCCCTGTTTCTTACACAGTAACAACAGTGGCACCACATGGGATTCCACTCTGCA
CAGGCCAGCACATCCCTGCTTGTAGTACACAGCAGGTCCCAGGATGCTCTGTGGTTTTTCAGTGGACAGCA
CCTCCCTGTCTGTAGTGTGCCTCCTCCAATGCTTCAGGCATGTTTCAGTTCAGCACTTACCAGTACCATAT
GCTGCATTTCCACCCCTTATTTCTAGTATCCATTTCTTATACATCCTCCTCACCTTTCTCCCCATCATC
CTCCTCATTTGCCACCACCAGGCCAGTTTGTCCCTTTCCAACACAGCAATCACGATCGCCTCTGCAAAG
GATAGAAAATGAAGTGAACCTTAGGAGAACATCTCCAGTAGGAGGTTTTACTTACCCTCCATCAGCC
CACCCCCAACATTACCTCCATCAGCTCCCTTGCAGTTCTTAACACATGATCCTTTGCATCAGGAGGTGT
CCTTTGGAGTACCTTATCCTCCATTTATGCCTCGGAGGCTTACAGGACGTAGTAGATACCGATCCCAGCA
GCCAATACCACCTCCCCCTTATCATCCCAGCTTACTGCCATATGTGTTATCAATGCTTCCAGTGCCACCT
GCAGTGGGCCCAACTTTTCAGCTTTGAATTAGATGTAGAAGATGGAGAAGTAGAAAATTACAGGCCCCGT
TAAACCTGGCAGAGCGACTGGGAGAGGCAAGCCCTCGTGGACTGACTAAAGCAGATATTGAACAACCTTC
TTCTTATCGGTTCAATCCTAACCAACCAGTCCAGAACAGACTTTGTGTGTAGTATGCATGTGTGATTTT
GAGTCAAGGCAGTACTTAGAGTCTTACCCTGTAACCAGAGTCCATGCCAAGTGTGTTGACAAAATGGC
TTAAGGCAAAATCGTACTTGCCCAATTTGCCGAGCTGATGCTTCAGAAGTGCATCGGGATTTCAGAA

ACGCGTACGCGGCCGCTCGAG - GFP Tag - GTTTAA



[View online »](#)

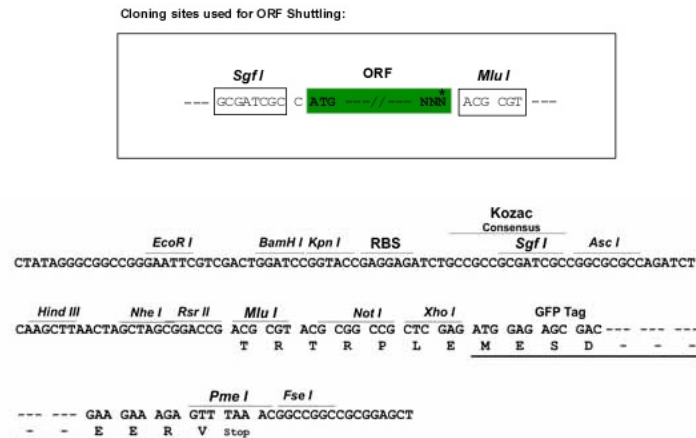
Protein Sequence: >RG220686 representing NM_194328
Red=Cloning site Green=Tags(s)

MACKSEDSPPKQRQLSHSVFDYTSASPAPSPMPRPWEMTSNRQPPSVRPSQHHSGERCNTPARNRRSP
 PVRQRGRDRRLSRHNSISQDENYHLLPYAQQQAIIEPRAFHPNVSPELLHPAAHPPQQNAVMDIHDQ
 LHQGTVPVSYTVTTPVAPHGIPLCTGQHIPACSTQQVPGCSVVFSGQHLPVCSVPPMQLACSVQHLVPVY
 AAFPLISSDPFLIHPHLSPHHPHLPPPGQFVPFQTQQRSPQLQRIENEVELLGEHLVGGFTYPPSA
 HPPTLPSPAPLQFLTHDPLHQEVSFGVPYPPFMPRRLTGRSRYRSQQPIPPPPYHPSLLPYVLSMLPVPP
 AVGPTFSFELDVEDGEVENYEALLNLAERLGEAKPRGLTKADIEQLPSYRFNPNNHQSEQLTLCVVMCDF
 ESRQLLRVLPCHHEFHAKCVDKWLKANRTCPICRADASEVHRDSE

TRTRPLE - GFP Tag - V

Restriction Sites: SgfI-MluI

Cloning Scheme:



ACCN: NM_194328

ORF Size: 1398 bp

OTI Disclaimer: The molecular sequence of this clone aligns with the gene accession number as a point of reference only. However, individual transcript sequences of the same gene can differ through naturally occurring variations (e.g. polymorphisms), each with its own valid existence. This clone is substantially in agreement with the reference, but a complete review of all prevailing variants is recommended prior to use. [More info](#)

OTI Annotation: This clone was engineered to express the complete ORF with an expression tag. Expression varies depending on the nature of the gene.

Components: The ORF clone is ion-exchange column purified and shipped in a 2D barcoded Matrix tube containing 10ug of transfection-ready, dried plasmid DNA (reconstitute with 100 ul of water).

Reconstitution Method:

1. Centrifuge at 5,000xg for 5min.
2. Carefully open the tube and add 100ul of sterile water to dissolve the DNA.
3. Close the tube and incubate for 10 minutes at room temperature.
4. Briefly vortex the tube and then do a quick spin (less than 5000xg) to concentrate the liquid at the bottom.
5. Store the suspended plasmid at -20°C. The DNA is stable for at least one year from date of shipping when stored at -20°C.

RefSeq: [NM_194328.1](#), [NP_919309.1](#)

RefSeq Size: 5268 bp

RefSeq ORF: 1299 bp

Locus ID: 152006

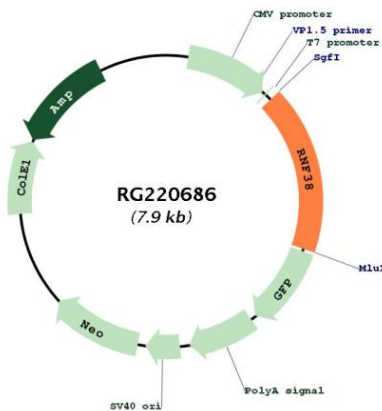
UniProt ID: [Q9H0F5](#)

Cytogenetics: 9p13.2

Protein Families: Druggable Genome

Gene Summary: This gene encodes a protein with a coiled-coil motif and a RING-H2 motif (C3H2C2) at its carboxy-terminus. The RING motif is a zinc-binding domain found in a large set of proteins playing roles in diverse cellular processes including oncogenesis, development, signal transduction, and apoptosis. Multiple transcript variants encoding different isoforms have been found for this gene. [provided by RefSeq, Dec 2008]

Product images:



Circular map for RG220686