

Product datasheet for **RG220678**

ALG8 (NM_001007027) Human Tagged ORF Clone

Product data:

Product Type:	Expression Plasmids
Product Name:	ALG8 (NM_001007027) Human Tagged ORF Clone
Tag:	TurboGFP
Symbol:	ALG8
Synonyms:	CDG1H; PCLD3
Mammalian Cell Selection:	Neomycin
Vector:	pCMV6-AC-GFP (PS100010)
E. coli Selection:	Ampicillin (100 ug/mL)



[View online »](#)

ORF Nucleotide Sequence:

>RG220678 representing NM_001007027
 Red=Cloning site Blue=ORF Green=Tags(s)

TTTTGTAATACGACTCACTATAGGGCGGCCGGAATTCGTCGACTGGATCCGGTACCGAGGAGATCTGCC
 GCC**CGCATCGCC**

ATGGCGGCGCTCACAAATGCCACGGGACTGGCAATTGGTTTTCGGCTTTGGCGCTCGGGGTGACTCTTC
 TCAATGCCTTCTCATCCCCACATACCATTCCACAGATTTTGAAGTACACCGAAACTGGCTTGTATCAC
 TCACAGTTTGCCAAATACACAGTGGTATTATGAGGCAACTTCAGAGTGGACGTTGGATTACCCCCCTTC
 TTTGCATGGTTTGAATATCCTGTCACATGTTGCCAAATATTTTATGCAAGAAATGCTGAATGTCCATA
 ATTTGAATTACTCCAGCTCAAGGACCTTACTTTCCAGAGATTTCCGTCATCTTTATGGATGACTCTT
 TGTGTATGCTGTCGTGAGTGTGTAATGCATTGATGGAAAAAAGTGGGTAAGAAGTACAGAAAAAG
 CCAAAATTTATTCTGTCGGTATTACTTCTGTGAACTTCGGGTATTAATTGTGGACCATATTCATTTTC
 AGTACAATGGCTTTTTATTTGGATTAATGCTACTCTCCATTGCACGATTATTCAGAAAAGGCATATGGA
 AGGAGCATTTCTCTTTGCTGTTCTCCTACATTTCAAGCATATCTACCTCTATGTAGCACCAGCTTATGGT
 GTATATCTGCTGCGATCCTACTGTTTCACTGCAAATAAACAGATGGGTCTATTCGATGGAAGAGTTTCA
 GCTTTGTTGCTGTTATTTCCCTGGGACTGGTGTGTTTTCTAGTTTCTGCTCTTTCATTGGGTCTTTCT
 GGCCTTGAATCAGCTGCCTCAAGTCTTTTCCGACTCTTTCCTTTCAAGAGGGGCTCTGTGCATGCATAT
 TGGGCTCCAAACTTCTGGGCTTTGTACAATGCTTTGGACAAAGTGTGTCTGTATCGGTTTGAATTTGA
 AATTTCTTGATCCCAACAATATCCCAAGGCTCAATGACAAGTGGTTTGGTTTCCAGCAGTTCCAACACAC
 AGTCCTTCCCTCAGTGACTCCCTGGCAACCCTCATCTGCACACTGATTGCCATATTGCCCTCTATTTTC
 TGTCTTTGGTTTAAACCCCAAGGCCCAGAGGCTTTCTCCGATGTCTAACTCTTTGTGCCTTTGAGCTCCT
 TTATGELTTGGGTGGCATGTTTCATGAAAAAGCCATACTTCTAGCAATTCTCCAATGAGCCTTTTGTCTGT
 GGGAAAAGCAGGAGACGCTTCGATTTTCTGATTCTGACCACAACAGGACATTATCCCTCTTTCTCTG
 CTCTTCACTGCACCAGAACTTCCATTAATAATCTTACTCATGTTACTATTCACCATATATAGTATTTCTG
 CACTGAAGACTTTATTCAGACGGAGTTTACCCTTGTGCCAGGCTGGAGTGAATGGCAGCATCTCAG
 C

ACGCGTACGCGGCCGCTCGAG - GFP Tag - GTTTAA

Protein Sequence:

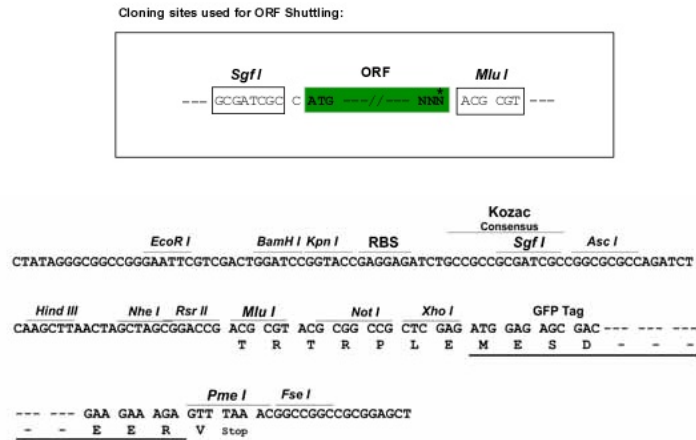
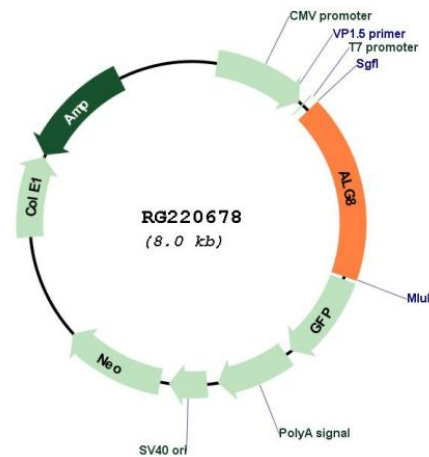
>RG220678 representing NM_001007027
 Red=Cloning site Green=Tags(s)

MAALTIATGTGNWFSALALGVTLKCLLIPTYHSTDFEVHRNWLAIHSLPISQWYYEATSEWTLDYPPF
 FAWFEYILSHVAKYFDQEMLNVHNLNYSSRTLLFQRFVIFMDVLFVYAVRECKCIDGKVKVKGELTEK
 PKFILSVLLLWNFGLLIVDHIHFQYNGFLFGLMLLSIARLFQKRHMEGAFLLAVLLHFKHIYLYVAPAYG
 VYLLRSYCFTANKPDGSIRWKSFSFVRVISLGLVVFLVSALSLGPFLALNQLPQVFSRLFPFKRGLCHAY
 WAPNFWALYNALDKVLSVIGLKLKFLDPNNIPKASMTSGLVQQFQHTVLPVSVTPLATLICTLIAILPSIF
 CLWFKPQGPGRFLRCLTLCALSSFMGWHVHEKAILLAILPMSLLSVGKAGDASIFLILTTTGHYSLFPL
 LFTAPELPIKILLMLLFTIYSISLKTFLRRSFTLVQAQGVQWHDLS

TRTRPLE - GFP Tag - V

Restriction Sites:

Sgfl-Mlul

Cloning Scheme:

Plasmid Map:


ACCN: NM_001007027

ORF Size: 1401 bp

OTI Disclaimer: The molecular sequence of this clone aligns with the gene accession number as a point of reference only. However, individual transcript sequences of the same gene can differ through naturally occurring variations (e.g. polymorphisms), each with its own valid existence. This clone is substantially in agreement with the reference, but a complete review of all prevailing variants is recommended prior to use. [More info](#)

OTI Annotation: This clone was engineered to express the complete ORF with an expression tag. Expression varies depending on the nature of the gene.

Components: The ORF clone is ion-exchange column purified and shipped in a 2D barcoded Matrix tube containing 10ug of transfection-ready, dried plasmid DNA (reconstitute with 100 ul of water).

Reconstitution Method:

1. Centrifuge at 5,000xg for 5min.
2. Carefully open the tube and add 100ul of sterile water to dissolve the DNA.
3. Close the tube and incubate for 10 minutes at room temperature.
4. Briefly vortex the tube and then do a quick spin (less than 5000xg) to concentrate the liquid at the bottom.
5. Store the suspended plasmid at -20°C. The DNA is stable for at least one year from date of shipping when stored at -20°C.

RefSeq: [NM_001007027.2](#), [NP_001007028.1](#)

RefSeq Size: 1756 bp

RefSeq ORF: 1404 bp

Locus ID: 79053

UniProt ID: [Q9BVK2](#)

Cytogenetics: 11q14.1

Protein Families: Transmembrane

Protein Pathways: Metabolic pathways, N-Glycan biosynthesis

Gene Summary: This gene encodes a member of the ALG6/ALG8 glucosyltransferase family. The encoded protein catalyzes the addition of the second glucose residue to the lipid-linked oligosaccharide precursor for N-linked glycosylation of proteins. Mutations in this gene have been associated with congenital disorder of glycosylation type 1h (CDG-1h). Alternatively spliced transcript variants encoding different isoforms have been identified. [provided by RefSeq, Jul 2008]