

Product datasheet for **RG220659**

alpha 2b Adrenergic Receptor (ADRA2B) (NM_000682) Human Tagged ORF Clone

Product data:

Product Type:	Expression Plasmids
Product Name:	alpha 2b Adrenergic Receptor (ADRA2B) (NM_000682) Human Tagged ORF Clone
Tag:	TurboGFP
Symbol:	alpha 2b Adrenergic Receptor
Synonyms:	ADRA2L1; ADRA2RL1; ADRARL1; alpha-2BAR; ALPHA2BAR; FAME2
Mammalian Cell Selection:	Neomycin
Vector:	pCMV6-AC-GFP (PS100010)
E. coli Selection:	Ampicillin (100 ug/mL)



[View online »](#)

ORF Nucleotide Sequence:

>RG220659 representing NM_000682
 Red=Cloning site Blue=ORF Green=Tags(s)

TTTTGTAATACGACTCACTATAGGGCGGCCGGGAATTCGTCGACTGGATCCGGTACCGAGGAGATCTGCC
 GCCGCGATCGCC

ATGGACCACCAGGACCCCTACTCCGTGCAGGCCACAGCGGCCATAGCGGGGCCATCACCTTCTCATTC
 TCTTTACCATCTTCGGCAACGCTCTGGTCATCCTGGCTGTGTTGACCAGCCGCTCGCTGCGGCCCTCA
 GAACCTGTTCTGGTGTGCTGGCCGCCCGACATCCTGGTGGCCACGCTCATCATCCCTTTCTCGCTG
 GCCAACGAGTGTCTGGGCTACTGGTACTTCGGCGCACGTGGTGCAGGTGTACCTGGCGCTCGACGTGC
 TCTTCTGCACCTCGTCCATCGTGCACCTGTGCGCCATCAGCCTGGACCGCTACTGGGCCGTGAGCCGCG
 GCTGGAGTACAACCTCAAGCGCACCCCGCGCCGCATCAAGTGCATCATCCTCACTGTGTGGCTCATCGCC
 GCCGTATCTCGCTGCCGCCCTCATCTACAAGGGCGACCAGGGCCCCAGCCGCGGGCGCCCCCAGT
 GCAAGCTCAACCAGGAGCCTGGTACATCCTGGCCTCCAGCATCGGATCTTTCTTTGCTCCTTGCCAT
 CATGATCCTTGTCTACCTGCGCATCTACCTGATCGCCAAACGCAGCAACCGCAGAGGTCCCAGGGCCAAG
 GGGGGGCTGGGAGGGTGTGCAAGCAGCCCGACCCGACCATGGTGGGGCTTTGGCCTCAGCCAAAC
 TGCCAGCCCTGGCCTCTGTGGCTTCTGCCAGAGAGGTCAACGGCACTCGAAGTCCACTGGGGAGAAGGA
 GGAGGGGAGACCCTGAAGATACTGGGACCCGGGCTTGCCACCAGTTGGGCTGCCCTTCCAACTCA
 GGCCAGGGCCAGAAGGAGGGTGTGTTGGGGCATCTCCAGAGGATGAAGCTGAAGAGGAGGAAGAGGAGG
 AGGAGGAGGAGGAAGAGTGTGAACCCAGGCAAGTGCAGTGTCTCCGGCCTCAGTTGCAGCCCCCGCT
 GCAGCAGCCACAGGGCTCCCGGTGTGTCACCCACCTACGTGGCCAGGTGCTCCTGGGAGGGCGTGGGT
 GCTATAGGTGGCAGTGGTGGCGTCGACGGGCGCAGCTGACCCGGGAGAAGCGCTTACCTTCGTGCTGG
 CTGTGGTCATTGGCGTTTTGTGCTCTGCTGTTCCCTTCTTCTCAGCTACAGCCTGGGCGCCATCTG
 CCGAAGCACTGCAAGGTGCCCATGGCCTCTCCAGTCTTCTTCTGGATCGGCTACTGCAACAGCTCA
 CTGAACCTGTTATCTACACCATCTTCAACCAGGACTTCCGCCGTGCCTCCGGAGGATCCTGTGCCGCC
 CGTGGACCAGACGGCCTGG

ACGCGTACGCGGCCGCTCGAG - GFP Tag - GTTTAA

Protein Sequence:

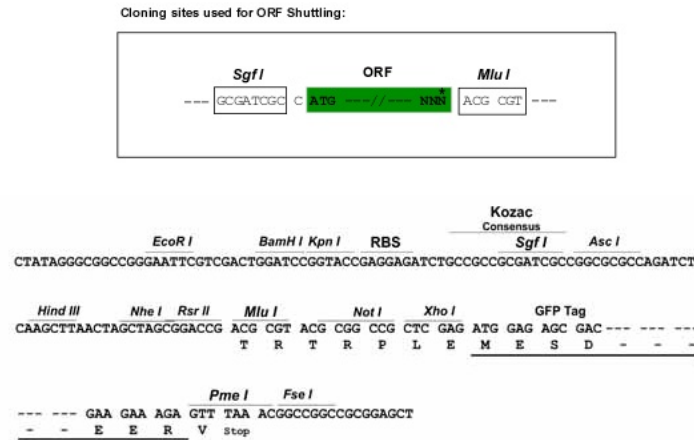
>RG220659 representing NM_000682
 Red=Cloning site Green=Tags(s)

MDHQDPYSVQATAAIAAAITFLILFTIFGNALVILAVLTSRSLRAPQNLFLVSLAAADILVATLIIPFSL
 ANELLGYWYFRRTWCEVYLALDVLFTSSIVHLCAISLDRYWAVSRALEYNSKRTPRRIKCIILTVWLIA
 AVISLPLIYKGDQGPQPRGRPQCKLNQEAUYILASSIGSFFAPCLIMILVYLRILYLIAKRSNRRGPRAK
 GPGQGESKQPRPDHGGALASAKLPALASVASAREVNGHSHKSTGEKEEGETPEDTGTRALPPSWAALPNS
 GQGQKEGVCGASPEDEAEAAAAAAAAEECEPQAVPVSPASACSPPLQQPQGSRVLATLRGQVLLGRGVG
 AIGGQWRRRAQLTREKRFVFLAVVIGVFLCWFPPFFSYSLGAICPKHCKVPHGLFQFFFWIGYCNS
 LNPVIYTIIFNQDFRRFRILCRPWTQTAW

TRTRPLE - GFP Tag - V

Restriction Sites:

SgfI-MluI

Cloning Scheme:


ACCN: NM_000682

ORF Size: 1350 bp

OTI Disclaimer: The molecular sequence of this clone aligns with the gene accession number as a point of reference only. However, individual transcript sequences of the same gene can differ through naturally occurring variations (e.g. polymorphisms), each with its own valid existence. This clone is substantially in agreement with the reference, but a complete review of all prevailing variants is recommended prior to use. [More info](#)

OTI Annotation: This clone was engineered to express the complete ORF with an expression tag. Expression varies depending on the nature of the gene.

Components: The ORF clone is ion-exchange column purified and shipped in a 2D barcoded Matrix tube containing 10ug of transfection-ready, dried plasmid DNA (reconstitute with 100 ul of water).

Reconstitution Method:

1. Centrifuge at 5,000xg for 5min.
2. Carefully open the tube and add 100ul of sterile water to dissolve the DNA.
3. Close the tube and incubate for 10 minutes at room temperature.
4. Briefly vortex the tube and then do a quick spin (less than 5000xg) to concentrate the liquid at the bottom.
5. Store the suspended plasmid at -20°C. The DNA is stable for at least one year from date of shipping when stored at -20°C.

RefSeq: [NM_000682.4](#), [NP_000673.2](#)

RefSeq Size: 3288 bp

RefSeq ORF: 1353 bp

Locus ID: 151

UniProt ID: [P18089](#)

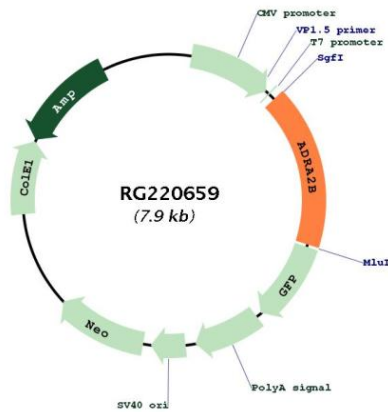
Cytogenetics: 2q11.2

Protein Families: Druggable Genome

Protein Pathways: Neuroactive ligand-receptor interaction

Gene Summary: This intronless gene encodes a seven-pass transmembrane protein. This protein is a member of a subfamily of G protein-coupled receptors that regulate neurotransmitter release from sympathetic nerves and from adrenergic neurons in the central nervous system. [provided by RefSeq, Apr 2014]

Product images:



Circular map for RG220659