

Product datasheet for **RG220656**

ROR alpha (RORA) (NM_134262) Human Tagged ORF Clone

Product data:

Product Type:	Expression Plasmids
Product Name:	ROR alpha (RORA) (NM_134262) Human Tagged ORF Clone
Tag:	TurboGFP
Symbol:	RORA
Synonyms:	IDDECA; NR1F1; ROR1; ROR2; ROR3; RZR-ALPHA; RZRA
Mammalian Cell Selection:	Neomycin
Vector:	pCMV6-AC-GFP (PS100010)
E. coli Selection:	Ampicillin (100 ug/mL)



[View online »](#)

ORF Nucleotide Sequence:

>RG220656 representing NM_134262
 Red=Cloning site Blue=ORF Green=Tags(s)

TTTTGTAATACGACTCACTATAGGGCGGCCGGAATTCGTCGACTGGATCCGGTACCGAGGAGATCTGCC
 GCC**CGGATCGCC**

ATGATGTATTTGTGATCGCAGCGATGAAAGCTCAAATTGAAATTATTCCATGCAAGATCTGTGGAGACA
 AATCATCAGGAATCCATTATGGTGTATTACATGTGAAGGCTGCAAGGGCTTTTTTTCAGGAGAAGTCAGCA
 AAGCAATGCCACCTACTCCTGTCCTCGTCAGAAGAACTGTTTGATTGATCGAACCAGTAGAAACCGCTGC
 CAACACTGTGATTACAGAAATGCCTTGCCGTAGGGATGTCTCGAGATGCTGTAATAATTTGGCCGAATGT
 CAAAAAAGCAGAGAGACAGCTTGTATGCAGAAGTACAGAAACACCGGATGCAGCAGCAGCAGCGCACCA
 CCAGCAGCAGCCTGGAGAGGCTGAGCCGCTGACGCCACCTACAACATCTCGCCAACGGGCTGACGGAA
 CTTACAGCAGCCTCAGTAACACTGACGGGCACCCCTGAGGGGAGTAAGGCAGACTCCGCCGTCA
 GCAGCTTCTACCTGGACATACAGCCTTCCCAGACCAGTCAGGCTTGTATCAATGGAATCAAACCAGA
 ACCAATATGTGACTACACACCAGCATCAGGCTTCTTCCCTACTGTTTCGTTACCAACGGGAGACTTCC
 CCAACTGTGTCCATGGCAGAATTAAGAACCTTGCACAGAATATATCTAAATCGCATCTGGAACCTGCC
 AATACTTGAGAGAAGAGCTCCAGCAGATAACGTGGCAGACCTTTTTACAGGAAGAAATTGAGAACTATCA
 AAACAAGCAGCGGGAGGTGATGTGGCAATTGTGTGCCATCAAATACAGAAAGCTATACAGTATGTGGTG
 GAGTTTGCACCAACGCATTGATGGATTTATGGAAGTGTGTCAAATGATCAAATTTGCTTCTAAAAGCAG
 GTTCTCTAGAGGTGGTGTATATCAGAATGTGCCGTGCCTTTGACTCTCAGAACACACCGGTACTTTTGA
 TGGGAAGTATGCCAGCCCGACGCTTCAAATCCTTAGGTTGTGAAGACTTTATTAGCTTTGTGTTTGA
 TTTGAAAAGAGTTTATGTTCTATGCACCTGACTGAAGATGAAATGCAATATTTTCTGCATTTGACTGA
 TGTACAGCAGTCGCTCATGGCTGCAAGAAAAGGTAAAAATTGAAAACTGCAACAGAAAAATTCAGCTGC
 TCTTCAACACGTCTACAGAAGAATCACCGAGAAGATGGAATACTAACAAAGTTAATATGCAAGGTGCT
 ACATTAAGAGCCTTATGTGGACGACATACAGAAAAGCTAATGGCATTAAAGCAATATACCCAGACATTG
 TCGACTTCATTTTCTCCATTATACAAGGAGTTGTTCACTTCAGAATTTGAGCCAGCAATGCAAATTGA
 TGGG

ACGCGTACGCGGCCGCTCGAG – GFP Tag – GTTTAA

Protein Sequence:

>RG220656 representing NM_134262
 Red=Cloning site Green=Tags(s)

MMYFVIAAMKAQIEIIPCKICGDKSSGIHYGVITCEGCKGFFRRSQSNATYSCPRQKNCLIDRTSRNRC
 QHCRLQKCLAVGMSRDAVKFGRMSKKQRDSL YAEVQKHRMQQQRDHQQPGEAEPLTPTYNISANGLTE
 LHDDL SNYIDGHTPEGSKADSAVSSFYLDIQSPDQSGLDINGIKPEPICDYTPASGFFPYCSFTNGETS
 PTVSMAELEHLAQNISKSHLETCQYLREELQQITWQTFLEEEIENYQNKQREVMWQLCAIKITEAIQYVV
 EFAKRIDGFMELCQNDQIVLLKAGSLEVVFIRMCRAFDSQNNVTYFDGKYASPDVFKSLGCEDFISFVFE
 FGKSLCSMHLTEDEIALFSFVLM SADR SWLQEKVKIEKLQQKIQLALQHV LQKNHREDGILTKLICKV S
 TLRALCGRHTEKLMFAKAIYPDIVRLHFPPLYKELFTSEFEPAMQIDG

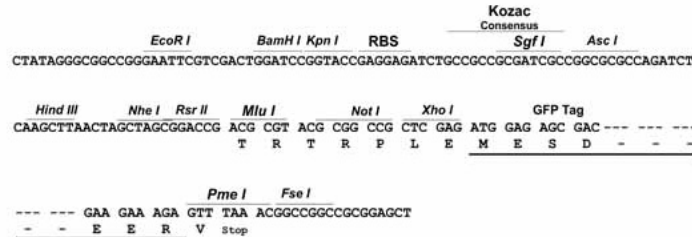
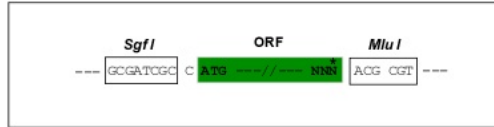
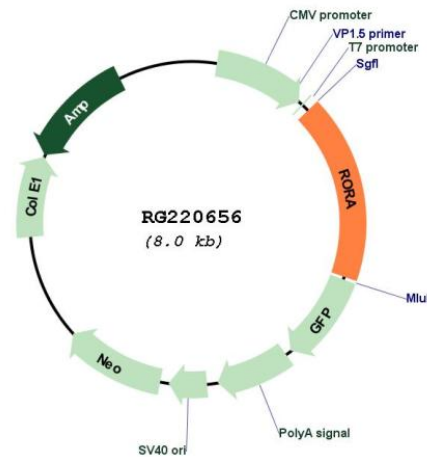
TRTRPLE – GFP Tag – V

Restriction Sites:

Sgfl-MluI

Cloning Scheme:

Cloning sites used for ORF Shutting:


Plasmid Map:


ACCN: NM_134262

ORF Size: 1404 bp

OTI Disclaimer: The molecular sequence of this clone aligns with the gene accession number as a point of reference only. However, individual transcript sequences of the same gene can differ through naturally occurring variations (e.g. polymorphisms), each with its own valid existence. This clone is substantially in agreement with the reference, but a complete review of all prevailing variants is recommended prior to use. [More info](#)

OTI Annotation: This clone was engineered to express the complete ORF with an expression tag. Expression varies depending on the nature of the gene.

Components: The ORF clone is ion-exchange column purified and shipped in a 2D barcoded Matrix tube containing 10ug of transfection-ready, dried plasmid DNA (reconstitute with 100 ul of water).

Reconstitution Method:

1. Centrifuge at 5,000xg for 5min.
2. Carefully open the tube and add 100ul of sterile water to dissolve the DNA.
3. Close the tube and incubate for 10 minutes at room temperature.
4. Briefly vortex the tube and then do a quick spin (less than 5000xg) to concentrate the liquid at the bottom.
5. Store the suspended plasmid at -20°C. The DNA is stable for at least one year from date of shipping when stored at -20°C.

RefSeq: [NM_134262.2](#)

RefSeq Size: 1687 bp

RefSeq ORF: 1407 bp

Locus ID: 6095

UniProt ID: [P35398](#)

Cytogenetics: 15q22.2

Protein Families: Druggable Genome, Nuclear Hormone Receptor, Transcription Factors

Gene Summary: The protein encoded by this gene is a member of the NR1 subfamily of nuclear hormone receptors. It can bind as a monomer or as a homodimer to hormone response elements upstream of several genes to enhance the expression of those genes. The encoded protein has been shown to interact with NM23-2, a nucleoside diphosphate kinase involved in organogenesis and differentiation, as well as with NM23-1, the product of a tumor metastasis suppressor candidate gene. Also, it has been shown to aid in the transcriptional regulation of some genes involved in circadian rhythm. Four transcript variants encoding different isoforms have been described for this gene. [provided by RefSeq, Feb 2014]