

Product datasheet for **RG220637**

ANK1 (NM_020475) Human Tagged ORF Clone

Product data:

Product Type:	Expression Plasmids
Product Name:	ANK1 (NM_020475) Human Tagged ORF Clone
Tag:	TurboGFP
Symbol:	ANK1
Synonyms:	ANK; SPH1; SPH2
Mammalian Cell Selection:	Neomycin
Vector:	pCMV6-AC-GFP (PS100010)
E. coli Selection:	Ampicillin (100 ug/mL)
ORF Nucleotide Sequence:	>RG220637 representing NM_020475 Red=Cloning site Blue=ORF Green=Tags(s)

TTTTGTAATACGACTCACTATAGGGCGGCCGGAATTCGTCGACTGGATCCGGTACCGAGGAGATCTGCC
GCC**CGATCGCC**

ATGCCCTATTCTGTGGGCTTCCGCGAAGCCGATGCTGCTACCAGCTTTCTGAGAGCAGCAAGATCAGGTA
ACTTGGACAAAGCTTTGGATCACCTGCGGAATGGGGTAGATATTAACACCTGTAACCAGAATGGGTTGAA
TGGCTTGCATCTGGCTTCTAAGGAAGGCCATGTGAAAATGGTGGTTGAACCTCTGCACAAAGAAATCATT
CTAGAAAACGACAACCAAGAAGGGGAACACGGCCCTGCACATCGTCTAGCCGGGCAGGATGAGGTGG
TCCGGGAGCTTGTCAACTATGGAGCCAAGTCAACGCCAGTCACAGAAAGGTTTTACACCCTGTACAT
GGCAGCACAAGAGAACCCTTGAAGTGGTTAAGTTTTACTGGAAAATGGAGCTAACCCAGATGTAGCC
ACAGAAGACGGCTTACGCCTCTGGCGGTAGCCCTGCAGCAGGGCCATGAGAACGTCGTCGCGCACCTCA
TCAACTACGGCACCAAGGGGAAGGTGCGCCTCCCGGCCCTGCACATCGCGGCCCGCAACGACGACACGCG
CACGGGTGCGGTGCTGCTGCAGAACGCCCAACCCGGACGTGCTTCCAAGACGGGATTACGCCCCCTG
CACATTGCGGCTCACTACGAGAACCTCAACGTGGCCAGTTGCTCCTCAACAGAGGAGCCAGCGTCAATT
TCACACCACAGAACGGCATCACGCCACTGCACATCGCCTCCCGCAGGGGCAACGTGATCATGGTGGCGCT
GCTGCTGGATCGGGGAGCCAGATAGAAACCAAGACCAAGGACGAATTGACACCTCTCCACTGTGCAGT
CGAAATGGGCACGTGCGAATCTCAGAGATCCTGCTGGACCAGGGGCACCAATCCAAGCCAAAACCAAGA
ACGGCCTGTCCCAATTCACATGGCGGCTCAGGGAGACCACCTCGACTGTGTCCGGCTCCTGTTGCAATA
CGACGCAGAGATAGACGACATCACCTGGACCCTGACCCCACTCCACGTGGCTGCCCACTGTGGACAC
CACAGGTTGGCTAAGTCTTCTGGATAAAGGGGCCAAACCCAACTCCAGAGCCCTGAATGGCTTTACCC
CCTTACACATCGCCTGCAAAAAGAACCAGTCCGTGTCATGGAGTGTGCTGAAGACGGGAGCCTCGAT
CGACGCGGTACCCGAGTCTGGCCTGACACCTCTCCACGTGGCCTCCTTATGGGGCACCTTCCCATCGT
AAGAACCCTCTGCAGCGGGGGCGTCGCCAACGTCTCCAACGTGAAAGTGGAGACCCCGCTACACATGG
CAGCCAGACCCGGGCACACGGAAGTGGCCAAATATTTACTCCAGAACAAGCCAAAGTCAATGCCAAGGC
CAAGGATGACCAGACCCCACTTCACTGTGCAGCTCGCATCGGCCACACAAACATGGTGAAGCTCCTGCTG



[View online »](#)

GAAAATAACGCCAACCCCAACCTGGCCACCACCGCCGGGCACACCCCCTGCACATTGCAGCCCGTGAGG
 GCCATGTGAAACAGTCTCTGGCCCTTCTGGAAAAGGAAGCATCCCAGGCCTGCATGACCAAGAAAGGATT
 TACCCCTCTGCACGTGGCGGCCAAGTACGGGAAGGTGCGGGTGGCAGAGCTGCTGCTGGAGCGGGACGCA
 CACCCGAATGCTGCCGAAAAAATGGCCTGACCCCTGCACGTGGCCGTCCATCACAACAACCTGGACA
 TCGTCAAGCTGCTGCTCCCCGGGGCGGCTCCCCGCACAGCCCTGCCTGGAATGGCTACACCCCTTTGCA
 CATCGTGCACAAGCAGAACCAGGTGGAGGTGGCCCGTAGTCTGCTGCAGTATGGGGCTCAGCAAACGCC
 GAGTCGGTCAAGGTGTGACGCCCTTACCTGGCCGCCAGGAGGCCACGCAGAGATGGTGGCTGTC
 TGCTCTCGAAACAAGCCAATGGCAACCTGGGGAACAAGAGCGGACTCACTCCCTCCATCTGGTAGCACA
 AGAAGGCCACGTTCCAGTGGCAGATGTGCTGATCAAACACGGCGTCATGGTGGACGCCACCACCCGGATG
 GGCTACACTCCCTCCATGTGGCCAGTCACTATGGAAACATCAAGCTGGTGAAGTTTCTGCTGCAGCACC
 AGGCAGATGTCAATGCCAAGACCAAGCTAGGATACAGCCCTGCACCAGGCAGCCAGCAGGGACACAC
 AGACATCGTGACTCTGCTTCTGAAAAACGGTGTCTCCCAACAGAGGTGAGCTCGGATGGAACCACCT
 CTGGCCATAGCCAAGCGTTGGGCTACATTTCTGTACCAGCTGCTCAAGGTGTCACGGATGAAACCA
 GTTTCGTGTTAGTCAGTGATAAGCATCGAATGAGTTTCCCTGAGACAGTTGATGAGATCCTGGATGTCTC
 GGAAGATGAAGGGGAAGAAGCTCATCAGTTCAAGGCTGAGAGCGGGATTCCAGGGATGTTGATGAAGAG
 AAGGAGCTGCTGGATTTTGTGCCGAAGTAGACCAAGTGGTGAATCTCCAGCCATCCCAAGGATCCCT
 GTGCCATGCCTGAGACAGTGGTGTGATCAGGTGAGAGAGCAGGAGCAGGCATCTAAAGAGTATGATGAGGA
 CTCCCTCATCCCAAGCAGCCCGCCACCAGACCTCAGACAACATCAGCCCGGTGGCCAGCCCGGTGCAT
 ACAGGGTTTCTGGTGAGCTTTCATGGTTGACGCCCGGGGTGGTTCCATGAGAGGAAGTCCGCCACAACGGCC
 TGCGAGTGGTGTATCCCGCCACGGACGTGCGCAGCGCCACCCGCATCACCTGCCGCTGGTCAAGCCCCA
 GAAGCTCAGCAGCCGCCCCACTGGCCGAGGAGGAGGGCCTGGCCAGCAGGATCATAGCACTGGGGCC
 ACGGGGGCACAGTTCCTGAGCCCTGTAATCGTGGAGATCCCGACTTTGCCTCCATGGCCGTGGAGACC
 GCGAGTCGTGGTTCTGAGGAGGAAAAACGGCTCCGTGTGAAGGAGCACAGGAGCCGTATGGAGAGAG
 CTACCTGGATCAGATCCTCAACGGGATGGACGAAGAGCTGGGGAGCCTGGAGGAGCTAGAGAAGAAGAGG
 GTGTGCCGAATCATCACACCGACTTCCCGCTGTACTTCTGTGATCATGTACGGCTCTGCCAGGACTACG
 ACACCATCGTCCGAAGGGGGCTCCCTGAAGAGCAAGCTGGTGGCCCTGGTACAGGCAACGTTCCCGGA
 GAATGCCGTACCAAGAGAGTGAAGCTGGCTCTGCAGGCCAGCCTGTCCCGGATGAGCTTGTACTAAG
 CTCCTGGGCAACCAGGCCACATTAGCCCAATTGTACCCTGGAGCCCGGCGCCGAAGTTCCACCGCC
 CCATTGGCTTCGGATCCCACTACCTCCTTCTGGACGACAACCCGAGGGACAGCGGGAGGGAGACAC
 CACCAGCTGCGCTGCTTTCAGCGTCAATGGAGGAACAGACCAAGCCAGTGGGAAGACATAACAGGA
 ACCACCAAATTTGATATGCCAACGAGTGCGCCAACTTACCACCAATGTCTCTGCCAGTTTTGGCTGT
 CGGACTGTCTCGGACTGCTGAGGCTGTGAATTTGCCACCCTGTGTACAAAGAGCTCACTGCAGTGCC
 CTACATGGCCAAATTCGTATCTTTGCCAAGATGAATGACCCCGAGAGGGGGCCTGCGCTGCTACTGC
 ATGACAGATGATAAAGTGGACAAGACCCTGGAGCAGCATGAGAATTCGTGGAGGTGGCCCGGAGCAGGG
 ACATAGAGGTGTTGGAAGGAATGTCCCTGTTTGCAGAATCTCTGGGAACCTGGTGCCTGTGAAGAAAGC
 TGCCAGCAGCGGAGCTTCCACTTCCAGTCAATTCGGGAGAACCCTGTGGCCATGCCTGTAAAGGTGAGG
 GACAGCAGTCGAGAGCCGGGAGGGTCCCTGTGTTTCTGCGCAAGGCGATGAAGTACGAGGACACCCAGC
 ACATTCCTGCCACCTGAACATCACCATGCCCCCTGCGCAAGGGAAGTGGAGCCGAAGATAGGAGAAG
 GACCCGACGCCCTGGCCCTGCGATACAGCATTCTCAGTGAGTCCACACCAGGTTCTCTCAGTGGGACA
 GAGCAGGCAGAGATGAAGATGGCTGTTATCTCAGAGCACCTCGGTCTCAGCTGGGAGAGTTGGCCCGGG
 AGCTGCAGTTCAGTGTGGAAGACATCAACAGGATCCGAGTGGAAAATCCCAACTCCTGTTGGAGCAGAG
 TGTGGCCTTGCTGAACCTCTGGGTATCCGTGAAGGCCAAAACGCAACATGGAGAATCTGTACACAGCC
 CTGCAGAGCATTGACCGTGGCGAGATCGTGAACATGCTGGAGGGTTCCGGCCGACAGAGCCGAACCTTGA
 AGCCAGACAGGGGCACACCGACCGGACTACTCGCTGTACCCTCCAGATGAATGGTTACTCCTCACT
 GCAGGACGAGCTGCTGTCCCTGCCTCCCTGGGCTGTGCACTTTCCTCTCCGCTACGTGCAGACCAGTAC
 TGAATGAGGTGGCCGTCTAGACGCCATCCCTTGGCGGCCACGGAGCATGACACCATGCTGGAGATGT
 CTGACATGCAGGTGTGGTCTGCGGGCTCACGCCCTTCTGGTCACTGCTGAGGACTCCTCTCTGGAGTG
 TAGCAAGGCTGAGGACTCTGATGCCACAGGTACAGAGTGAAGTTGGAGGGGGCACTCTCAGAGGAACCG
 CGGGGCCCGAGTTGGGCTCTCTGGAACCTGTGGAGGACGACACAGTGGATTGAGATGCCACAAATGGCC
 TTATCGATTTGCTTGAACAGGAGGAAGGTGAGAGGTGAGAAGAGAAGCTGCCAGGTTCTAAGAGGCGAGGA
 TGACGCGACAGGTGCAGGGCAGGACTCAGAGAATGAAGTGTCTTGTTCAGGCCATCAGAGGGGGCAA
 GCCCAATCACACATCCCCACCGTAGTCAAGTACGGAGAGGAGTACAGGACAGACTGCAGGACTGGG

ATGCAGACGGCTCGATTGTCTACACTGCAAGATGCTGCACAAGGTTCTGGCAAGAGGAGGTCACGCA
 AGGTCCACTCATTCCAGGGAACAAGTACCATGACTGAAGGGCTAGAGCCCGGTGGATCTCAGGAGTAC
 GAGAAGGTCTGGTGTCTGTAAGTGAGCACACGTGGACAGAACAGCCCGAGGCTGAGAGCTCCAGGCC
 ACAGGGACCGGAGGCAGCAAGGCCAAGAAGAGCAGGTGCAGGAGGCCAAGAACACCTTACCCAAGTGGT
 GCAGGGGAATGAGTTTCAGAATATTCAGGGGAGCAGGTGACAGAGGAGCAATTCACGGATGAGCAGGGC
 AACATTGTACCAAGAAGATCATTCCGAAGGTGGTTCGACAGATAGACTTGTCCAGCGCCGATGCCGCC
 AGGAGCACGAGGAGGATCACACCTCGACACCCAACCC

ACGCGTACGCGGCCGCTCGAG – GFP Tag – GTTTAA

Protein Sequence:

>RG220637 representing NM_020475
 Red=Cloning site Green=Tags(s)

MPYSVGFREDAATSFLRAARSGNLDKALDHLRNGVDINTCNQNLNGLHLASKEGHVMMVVELLHKEII
 LETTTKKNTALHIAALAGQDEVVREL VNYGANVNAQSQKGF TPLYMAAQENHLEVVKFLENGANQNV
 TEDGFTPLAVALQQGHENYVAHLINYGTKGVRLPALHIAARNDDTRTAAVLLQNDPNPDVLSKTGFTPL
 HIAAHYENLNVALLNRGASVNF TPQNGITPLHIASRRGNVIMVRLLLDRGAQIETKTKDEL TPLHCAA
 RNGTHVRISEILLDHGAPIQAKTKNGLSPIHMAAQGDHLDVRLLLQYDAEIDDITL DHL TPLHVAACHG
 HRVAKVLLDKGAKPNSRALNGFTPLHIACKKNHVRMELLLKTGASIDAVTESGL TPLHVASFMGHLPIV
 KNLLQRGASPNVSNVKVETPLHMAARAGHTEVAKYLLQNKAKVNAKAKDDQTPLHCAARIGHTNMVKLL
 ENNANPNLATTAGHTPLHIAAREGHVETV LALLEKEASQACMTKKGFTPLHVAAYGKVRVAELLERDA
 HPNAAAGNGL TPLHVAVHHNLDIVKLLPRGGSPHSPAWNGYTPLHIAAKQNQVEVARSL LQYGGSA
 ESVQGVTPHLAAQEGHAEMVALLSKQANGNLGNKSGL TPLHLVAQEGHVPVADVLIKHGVMDATTRM
 GYTPLHVASHYGNIKLVKFL LQHQADVNAKTKL GYSPLHQAAQQGHTDIVTLLKNGASPNVSSDGTTP
 LAIAKRLGYSIVTDV LKVVTD ETSFVLVSDKHRMSFPETVDEILDVSEDEGEELISFKAERRDSRDVDEE
 KELLDFVPKLDQVVESPAIPRIPCAMPETV VIRSEEQEASKEYDEDSLIPSSPATETSDNISPVASPVH
 TGFLVFSMVDARGGSMRGRHNLRVVIPPRTCAAPTRITCR LKVPQKLS TPPPLAEEEGLASRIALGP
 TGAQFLSPVIVEIPHFASHGRGDREL VVLRSENGSVWKEHRSRYGESYLDQILNGMDEELGSL EEELEK
 VCR IITDFPL YFVIMSRLCQDYDTIGPEGGSLKSKL VPLVQATFPENAVTKRVKALQAQVPDELVTK
 LLGNQATFSP IIVTVEPRRRKFHRPIGLRIPLPSSWTDNPRDSGEGD TTSRLLC SVIGGTDQAQWEDITG
 TTKLVYANECANFTTNVSARFWLSDCPR TAEAVNFATLLYKELTAVPYMAKFVIFAKMNDPREGRLRCYC
 MTDDKVDKTL EQHENFVEVARSRDIEVLEGM SFAELSGNLVPVKKAAQQR SFHFQSFRENRLAMPVKVR
 DSSREPGGSL SFLRKAMYEDTQHILCHLNITMPPCAKGS GAEDRRRTPTPLALRYSILSESTPGSLSGT
 EQAEMKMAVISEHLGLSWAELARELQF SVEDINRIRVENPNSLLEQSVALLNLWVIREGQANMENLYTA
 LQSIDRGEIVNMLEGSGRQSRNLK PDRRHTDRDYSLS PSMQNGYSSLQDELLSPASLGALSSPLRADQY
 WNEVAVLDAIPLAATEHDTMLEMSDMQVWSAGL TPSLVTAEDSSLECSKAEDSDATGHEWKLEGALSEEP
 RGP ELGSELVEDD TVDS DATNGLIDLLEQEEGQRSEEKLP GSKRQDDATGAGQDSENEVSLVSGHQRGQ
 ARITHSPTVSQVTERSQDRLQDWDADGSI VSYLQDAAQGSWQEEVTQGP HSFQGTSTMTEGLEPGGSQEY
 EKVLVSVSEHTWTEQPEAESQADRDRRQQGQEEQVQEA KNTFTQVVQGNFQNIIPGEQVTEEQFTDEQ
 NIVTKKIIRKVVQRIDLSSADAAQEHEEDHTSTPNP

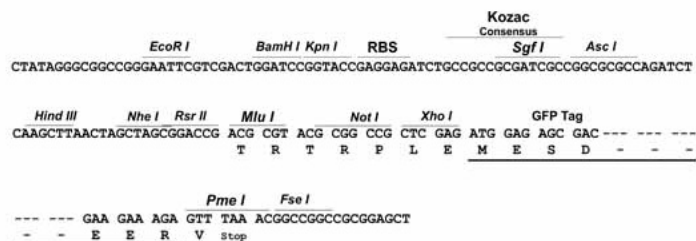
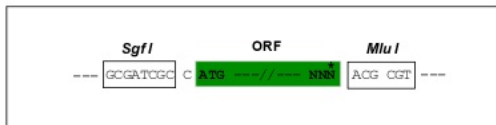
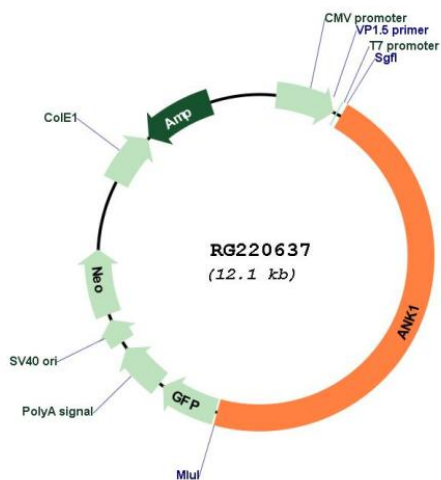
TRTRPLE – GFP Tag – V

Restriction Sites:

Sgfl-MluI

Cloning Scheme:

Cloning sites used for ORF Shutting:


Plasmid Map:


ACCN: NM_020475

ORF Size: 5568 bp

OTI Disclaimer:	The molecular sequence of this clone aligns with the gene accession number as a point of reference only. However, individual transcript sequences of the same gene can differ through naturally occurring variations (e.g. polymorphisms), each with its own valid existence. This clone is substantially in agreement with the reference, but a complete review of all prevailing variants is recommended prior to use. More info
OTI Annotation:	This clone was engineered to express the complete ORF with an expression tag. Expression varies depending on the nature of the gene.
Components:	The ORF clone is ion-exchange column purified and shipped in a 2D barcoded Matrix tube containing 10ug of transfection-ready, dried plasmid DNA (reconstitute with 100 ul of water).
Reconstitution Method:	<ol style="list-style-type: none">1. Centrifuge at 5,000xg for 5min.2. Carefully open the tube and add 100ul of sterile water to dissolve the DNA.3. Close the tube and incubate for 10 minutes at room temperature.4. Briefly vortex the tube and then do a quick spin (less than 5000xg) to concentrate the liquid at the bottom.5. Store the suspended plasmid at -20°C. The DNA is stable for at least one year from date of shipping when stored at -20°C.
RefSeq:	NM_020475.3
RefSeq Size:	8165 bp
RefSeq ORF:	5571 bp
Locus ID:	286
UniProt ID:	P16157
Cytogenetics:	8p11.21
Protein Families:	Transmembrane
Gene Summary:	Ankyrins are a family of proteins that link the integral membrane proteins to the underlying spectrin-actin cytoskeleton and play key roles in activities such as cell motility, activation, proliferation, contact and the maintenance of specialized membrane domains. Multiple isoforms of ankyrin with different affinities for various target proteins are expressed in a tissue-specific, developmentally regulated manner. Most ankyrins are typically composed of three structural domains: an amino-terminal domain containing multiple ankyrin repeats; a central region with a highly conserved spectrin binding domain; and a carboxy-terminal regulatory domain which is the least conserved and subject to variation. Ankyrin 1, the prototype of this family, was first discovered in the erythrocytes, but since has also been found in brain and muscles. Mutations in erythrocytic ankyrin 1 have been associated in approximately half of all patients with hereditary spherocytosis. Complex patterns of alternative splicing in the regulatory domain, giving rise to different isoforms of ankyrin 1 have been described. Truncated muscle-specific isoforms of ankyrin 1 resulting from usage of an alternate promoter have also been identified. [provided by RefSeq, Dec 2008]