

## Product datasheet for **RG220636**

### **MSK1 (RPS6KA5) (NM\_004755) Human Tagged ORF Clone**

#### **Product data:**

Product Type:	Expression Plasmids
Product Name:	MSK1 (RPS6KA5) (NM_004755) Human Tagged ORF Clone
Tag:	TurboGFP
Symbol:	RPS6KA5
Synonyms:	MSK1; MSPK1; RLPK
Mammalian Cell Selection:	Neomycin
Vector:	pCMV6-AC-GFP (PS100010)
E. coli Selection:	Ampicillin (100 ug/mL)



[View online »](#)

**ORF Nucleotide  
Sequence:**

>RG220636 representing NM\_004755  
 Red=Cloning site Blue=ORF Green=Tags(s)

TTTTGTAATACGACTCACTATAGGGCGGCCGGGAATTCGTGACTGGATCCGGTACCGAGGAGATCTGCC  
 GCC**CGGATCGCC**

ATGGAGGAGGAGGTGGCAGCAGCGCGGCCCGCGGGACCAGCGCGGACGGCGGCAGCGAGGAGAGC  
 AGTCCTCACTGTCAAGCACGAGCTGCGACTGCTAATTTGACAGGACATGCTGAGAAGGTGGAAATAGA  
 AAATTTTGAAGCTCCTGAAGGTCCTAGGAACTGGAGCTTATGAAAAAGTATTTCTAGTTCGTAATAAAGT  
 GGCCATGATACTGAAAGCTGTATGCCATGAAAGTTTTGAAAAAGGCAACAATCGTTCAAAAGGCCAAAA  
 CCACAGAGCATAACAAGGACAGAACGACAAGTCCTGGAACACATTAGGCAGTCGCCATTTTGGTAACATT  
 ACATTATGCTTTCCAGACAGAAACCAACTTCATCTCATTTTAGATTATATAAATGGTGGTGAACTTTTT  
 ACTCATCTTTCTCAAAGAGAGCGTTTACAGAGCATGAGGTGCAGATTTATGTTGGAGAGATTGTGCTTG  
 CCCTCGAACATCTCCACAAGTTGGGATTATATATCGTGATTAAGCTTGAGAATATTCTACTTGATTC  
 TAATGGCCATGTGGTGTGACAGATTTTGGTCTGAGTAAGGAGTTTGTGGCTGATGAAACTGAAAGAGCA  
 TATTCCTTTTGTGGAACATTGAATACATGGCACCAGATATTGTGAGAGGGGAGATTCCAGGACATGACA  
 AGGCAGTTGACTGGTGGAGTTTGGGTGTTCTAATGTATGAATTACTAACTGGAGCATCTCCTTTCACTGT  
 TGATGGAGAAAAAATCCCAAGCTGAGATATCTAGGAGAATATTAAGAGTGGAGCTCCATATCCCAA  
 GAAATGAGTGCTTAGCGAAAGACCTAATTCAGCGTCTTTTGTGAAAGATCCCAAGAAGAGATTGGGAT  
 GTGGTCCACGTGATGCAGATGAAATCAAAGAATCTCTTCTTTTCAAAAAATAAATTGGGATGATTTAGC  
 CGCAAAAAAGTGCTGCACCAATTAAGCCAGTCATTGAGATGAATTAGATGTGAGTAACTTTGCAGAA  
 GAGTTCACAGAAATGGATCCCACTTATTCTCCCGCAGCCCTGCCCCAGAGTTCTGAGAAGCTGTTTCAGG  
 GCTATTCCTTTTGTGCTCCTTCCATCTATTCAAGCGTAATGCAGCTGTCATAGACCCCTTCAGTTTCA  
 CATGGGAGTTGAACGTCTGGAGTGACAAATGTTGCCAGGAGTGAATGATGAAGGACTCTCCATTCTAT  
 CAACACTATGACCTAGATTTGAAGGACAAACCCCTGGGAGAAGGTAGTTTTTCAATTTGTGCGAAAGTGTG  
 TGCATAAAAAAAGTAACCAAGCTTTTGCAGTCAAATAATCAGCAAAAGGATGGAAGCCAATACTCAAAA  
 GGAAATAACAGCTCTGAAACTCTGTGAAGGACACCCCAATATTGTGAAGTGCATGAAGTTTTTTCATGAT  
 CAGCTTACACGTTTCTAGTGATGGAACCTCTGAATGGAGGAGAAGTGTGAGCGCATTAAAGAAAAAGA  
 AGCACTTCAGTGAGACGGAAGCCAGCTACATCATGAGGAAGCTTGTTCAGCTGTAAAGCCACATGCATGA  
 TGTGGAGTGGTGCACAGGGATCTGAAACCTGAGAATTTATTGTTACCCGATGAAATGACAATTTGGAA  
 ATTAATAAATTGATTTTGGATTTGCACGGCTAAAGCCACCGGATAATCAGCCCCTGAAGACTCCATGCT  
 TCACCTTCATTATGCCGCCAGAGCTCTTGAATCAGAACGGCTACGATGAGTCCTGTGACCTGTGGAG  
 CTTGGGCGTCATTTTGTACACAATGTTGTGAGGACAGGTTCCCTTCCAATCTCATGACCGAAGTTTGACG  
 TGTACCAGCGCGGTGAAATCATGAAGAAAATTAAGAGGGAGATTTCTCCTTTGAAAGGAGAAGCCCTGGA  
 AGAATGTATCCCAAGAGGCTAAAGATTTGATCCAAGGACTTCTCACAGTAGATCCAAACAAAAGGCTTAA  
 AATGTCTGGCTTGAGGTACAATGAATGGCTACAAGATGGAAGTCAAGTGTCTCCTCAATCCTCTGATGACT  
 CCGGATATTCTAGGATCTTCCGGAGCTGCCGTGCATACCTGTGTGAAAGCAACCTTCCACGCCTTTAACA  
 AATACAAGAGAGAGGGGTTTTGCCTTCAGAATGTTGATAAGGCCCTTTGGCTAAGAGAAGAAAAATGAA  
 AAAGACTAGCACCAGTACCGAGACGCGCAGCAGTTCAGTGAGAGTTCCCATTTCTTCTCTCATTCT  
 CACGGTAAAACCTACACCACCAAGACACTGCAGCCAGCAATCCTGCCGACAGCAATAACCCGGAGACCC  
 TCTTCCAGTTCTCGGACTCAGTAGCT

**ACGCGT**ACGCGGCCGCTCGAG - GFP Tag - GTTTAA

**Protein Sequence:** >RG220636 representing NM\_004755  
Red=Cloning site Green=Tags(s)

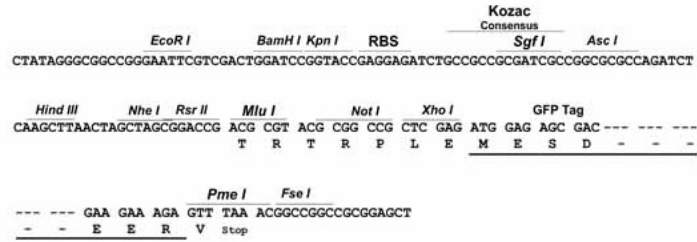
MEEEGSSGGAAGTSADGGDGGEQLLTVKHELRTANLTGHAEKVGIENFELLKVLGTGAYGKVFLVRKIS  
GHDTGKLYAMKVLKKATIVQAKTTEHTRTERQVLEHIRQSPFLVTLHYAFQTETKLHLILDYINGGELF  
THLSQRERFTEHEVQIYVGEIVLALEHLHKLGIYRDIKLENILLDSNGHVVL TDFGLSKEFVADETERA  
YSFCGTIEYMAPDIVRGGDSGHDKAVDWWSLGVLMEYELLTGASPFVTDGEKNSQAEISRRIKSEPPYPQ  
EMSALAKDLIQRLLMKDPKKRLGCGPRDADEIKEHLFFQKINWDDLAAKKVPAPFKPVIRDEL DVSNFAE  
EFTEMDPTYSPAALPQSSEKLFQGYSFVAPSILFKRNAVIDPLQFHMGVERPGVTNVARSAAMKDSPFY  
QHYDLDLKDKPLGEGSFSICRKC VHKSNQAFVVKIISKRMEANTQKEITALKLCEGHPNIVKLHEVFHD  
QLHTFLVMELNNGGELFERIKKKKHFS ETEASYIMRKLVS AVSHMHDVGVVHRDLKPENLLFTDENDNLE  
IKIIDFGFARLKPPDNQPLKTPCFTLHYAAP ELLNQNGYDESCDLWSLGVILYTMLSGQVPFQSHDRSLT  
CTSAVEIMKKIKKGDFSFEGEAWKNVSQEAKDLIQGLLTVDPNKRLKMSGLRYNEWLQDGSQLSSNPLMT  
PDILGSSGA AVHTCVKATFHAFNKYKREGFCLQNVDKAPLAKRRKMKKTSTSTETRSSSSSESSSSSSHS  
HGKTTPTKTLQPSNPADSNPETL FQFSDSVA

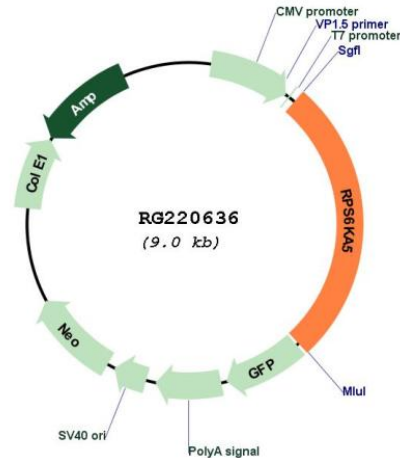
TRTRPLE - GFP Tag - V

**Restriction Sites:** Sgfl-MluI

Cloning Scheme:

Cloning sites used for ORF Shutting:



**Plasmid Map:**


**ACCN:** NM\_004755

**ORF Size:** 2406 bp

**OTI Disclaimer:** The molecular sequence of this clone aligns with the gene accession number as a point of reference only. However, individual transcript sequences of the same gene can differ through naturally occurring variations (e.g. polymorphisms), each with its own valid existence. This clone is substantially in agreement with the reference, but a complete review of all prevailing variants is recommended prior to use. [More info](#)

**OTI Annotation:** This clone was engineered to express the complete ORF with an expression tag. Expression varies depending on the nature of the gene.

**Components:** The ORF clone is ion-exchange column purified and shipped in a 2D barcoded Matrix tube containing 10ug of transfection-ready, dried plasmid DNA (reconstitute with 100 ul of water).

**Reconstitution Method:**

1. Centrifuge at 5,000xg for 5min.
2. Carefully open the tube and add 100ul of sterile water to dissolve the DNA.
3. Close the tube and incubate for 10 minutes at room temperature.
4. Briefly vortex the tube and then do a quick spin (less than 5000xg) to concentrate the liquid at the bottom.
5. Store the suspended plasmid at -20°C. The DNA is stable for at least one year from date of shipping when stored at -20°C.

**RefSeq:** [NM\\_004755.4](#)

**RefSeq Size:** 3883 bp

**RefSeq ORF:** 2409 bp

**Locus ID:** 9252

**UniProt ID:** [O75582](#)

**Cytogenetics:** 14q32.11

<b>Domains:</b>	pkinese, S_TK_X, TyrKc, S_TKc
<b>Protein Families:</b>	Druggable Genome, Protein Kinase, Transcription Factors
<b>Protein Pathways:</b>	Bladder cancer, MAPK signaling pathway, Neurotrophin signaling pathway
<b>Gene Summary:</b>	<p>Serine/threonine-protein kinase that is required for the mitogen or stress-induced phosphorylation of the transcription factors CREB1 and ATF1 and for the regulation of the transcription factors RELA, STAT3 and ETV1/ER81, and that contributes to gene activation by histone phosphorylation and functions in the regulation of inflammatory genes (PubMed:11909979, PubMed:12569367, PubMed:12763138, PubMed:9687510, PubMed:18511904, PubMed:9873047). Phosphorylates CREB1 and ATF1 in response to mitogenic or stress stimuli such as UV-C irradiation, epidermal growth factor (EGF) and anisomycin (PubMed:11909979, PubMed:9873047). Plays an essential role in the control of RELA transcriptional activity in response to TNF and upon glucocorticoid, associates in the cytoplasm with the glucocorticoid receptor NR3C1 and contributes to RELA inhibition and repression of inflammatory gene expression (PubMed:12628924, PubMed:18511904). In skeletal myoblasts is required for phosphorylation of RELA at 'Ser-276' during oxidative stress (PubMed:12628924). In erythropoietin-stimulated cells, is necessary for the 'Ser-727' phosphorylation of STAT3 and regulation of its transcriptional potential (PubMed:12763138). Phosphorylates ETV1/ER81 at 'Ser-191' and 'Ser-216', and thereby regulates its ability to stimulate transcription, which may be important during development and breast tumor formation (PubMed:12569367). Directly represses transcription via phosphorylation of 'Ser-1' of histone H2A (PubMed:15010469). Phosphorylates 'Ser-10' of histone H3 in response to mitogenics, stress stimuli and EGF, which results in the transcriptional activation of several immediate early genes, including proto-oncogenes c-fos/FOS and c-jun/JUN (PubMed:12773393). May also phosphorylate 'Ser-28' of histone H3 (PubMed:12773393). Mediates the mitogen- and stress-induced phosphorylation of high mobility group protein 1 (HMGN1/HMG14) (PubMed:12773393). In lipopolysaccharide-stimulated primary macrophages, acts downstream of the Toll-like receptor TLR4 to limit the production of pro-inflammatory cytokines (By similarity). Functions probably by inducing transcription of the MAP kinase phosphatase DUSP1 and the anti-inflammatory cytokine interleukin 10 (IL10), via CREB1 and ATF1 transcription factors (By similarity). Plays a role in neuronal cell death by mediating the downstream effects of excitotoxic injury (By similarity). Phosphorylates TRIM7 at 'Ser-107' in response to growth factor signaling via the MEK/ERK pathway, thereby stimulating its ubiquitin ligase activity (PubMed:25851810).[UniProtKB/Swiss-Prot Function]</p>