

Product datasheet for **RG220631**

ZNF274 (NM_016325) Human Tagged ORF Clone

Product data:

Product Type:	Expression Plasmids
Product Name:	ZNF274 (NM_016325) Human Tagged ORF Clone
Tag:	TurboGFP
Symbol:	ZNF274
Synonyms:	HFB101; ZF2; ZKSCAN19; ZSCAN51
Mammalian Cell Selection:	Neomycin
Vector:	pCMV6-AC-GFP (PS100010)
E. coli Selection:	Ampicillin (100 ug/mL)



[View online »](#)

ORF Nucleotide Sequence:

>RG220631 representing NM_016325
 Red=Cloning site Blue=ORF Green=Tags(s)

TTTTGTAATACGACTCACTATAGGGCGGCCGGAATTCGTCGACTGGATCCGGTACCGAGGAGATCTGCC
 GCC**CGCATCGCC**

ATGGCCTCCAGGCTTCCGACGGCCTGGTCTGTGAACCACTGACCTTTGAAGATGTAACACTGGGTTTTA
 CCCCGGAAGAGTGGGACTGCTGGACCTCAAACAGAAAGTCCCTGTACAGGGAAGTATGCTGGAGAACTA
 CAGGAACCTGGTCTCAGTGGAGTATCCTGAGCTCCAGCTGGACCTAAATTGGATCCTCTTCTGCTGAG
 AGTCCCCTAATGAACATTGAGGTTGTTGAGGTCCTCACACTGAACCAGGAGGTGGCTGGTCCCGGAATG
 CCCAGATCCAGGCCCTATATGCTGAAGATGGAAGCCTGAGTGCAGATGCCCCAGTGAAGCAGGTCCAACA
 GCAGGGCAAGCATCCAGGTGACCCTGAGGCCGCGCCAGAGGTTCCGGCAGTCCGTTATAAGGACATG
 ACAGGTCCCGGGAGGCCCTGGACCAGCTCCGAGAGCTGTGTACCAGTGGCTACAGCCTAAGGCACGCT
 CCAAGGAGCAGATCCTGGAGCTGCTGGTCTGGAGCAGTTCCTAGGTGCACTGCCTGTGAAGCTCCGGAC
 ATGGGTGGAATCGCAGCACCCAGAGAATGCCAAGAGGTGGTGGCCCTGGTAGAGGTGTGACCTGGATG
 TCTGAGGAGGAAGTACTTCTGACAGACAACCTGCCGAGGGCACCACCTGCTGCCTCGAGGTCACTGCC
 AGCAGGAGGAGAAGCAGGAGGATGCAGCCATCTGCCAGTGACAGTGTCCCTGAGGAGCCAGTGACCTT
 CCAGGATGTGGCTGTGGACTTCAGCCGGGAGGAGTGGGGGCTGCTGGGCCGACACAGAGGACCGAGTAC
 CGCGATGTGATGCTGGAGACCTTTGGGCACCTGGTCTCTGTGGGGTGGGAGACTACACTGGAAAAATAAG
 AGTTAGCTCCAAATCTGACATTCCTGAGGAAGAACAGCCCCAGCCTGAAAGTACAAGAATCCTCAAG
 GGATTGTCCCTTGTCTTACATTAGAAGATACCTTGACAGGTGGGGTCCAGGAAGTCCAAGACACAGT
 TTGAAGCAGATGGAGTCTGCTCAGGAAAAAGACCTTCTCAGAAGAAGCACTTTGACAACCGTGAAGTCCC
 AGGCAACACAGTGGTCTCTTGACACAAAACCAAGTTTCGCTCCAGAAAAATGACAACCCCTGAGTCCCGCC
 AAACAGTGGCGCTCTTGACACAAAACCAAGTTTTCGCTCCAGAAAAATTCCTCTAGAAAAACGATTGCGCAA
 CGTGACTCACAAGTAAAAGTATGAAACATAATTCACGTGAAAAATTCATCAGAAGAGCTGTGAAAGGC
 AAAAGGCCAAGGAAGGCAATGGTTGTAGGAAAACCTTCAGTCCGAGTACTAAACAGATTACGTTTATAAG
 AATTCACAAGGGGAGCCAAGTTTCCCGATGCAGTGAATGTGGTAAAAATTCGGAACCCCAAGATACTTT
 TCTGTGCATAAGAAAAATCCATACCGGAGAGAGGCCCTATGTGTGCAAGACTGTGGGAAAGGATTTGTT
 AGAGCTCTCCCTCACACAGCATCAGAGAGTTCATTCTGGAGAGAGACCATTGAAATGTCAGGAGTGTGG
 GAGGACCTTCAATGATCGCTCAGCCATCTCCAGCACCTGAGGACTCACACTGGCGTAAGCCCTACAAG
 TGTCAGGACTGTGAAAAGCCTTCGCCAGAGCTCCACCTCATCAGACATCAGAGGACTCACACCGGGG
 AGCGCCATATGCATGCAACAAATGTGGAAGGCCTTCACCCAGAGCTCACACCTTATTGGGCACCAGAG
 AACCCACAATAGGACAAAGCGAAAGAAGAAACAGCCTACCTCA

ACGCGTACGCGGCCGCTCGAG - GFP Tag - GTTTAA

Protein Sequence:

>RG220631 representing NM_016325
 Red=Cloning site Green=Tags(s)

MASRLPTAWSCEPVTFFEDVTLGF TPEEWGLLDLKQKSLYREVMLENYRNLVSVEYPELQLDPKLDPLPAE
 SPLMNIIEVVEVLTLNQEVAGPRNAQIQALYAEDGSL SADAPSEQVQQGKHPGDPEAARQRFQFRYKDM
 TGPREALDQLRELCHQWLQPKARSKEQILELLVLEQFLGALPVKLRWVESQHPENCQEVVALVEGVTWM
 SEEEVLPAGQPAEGTTCLEVTAQQEELQEDAAICPVTVLPEEPVTFQDVAVDF SREEWGLLGPTQRTEY
 RDVMLETFGHLVSVGWETTLENKELAPNSDIPEEEPAPSLKVQESSRDCAL SSTLEDTLQGGVQEVQDTV
 LKQMESAQEKDLPQKKHFDNRESQANSALDTNQVSLQKIDNPESQANSALDTNQVLLHKIPPRKRLRK
 RDSQVKS MKHNSRVKIHQKSCERQKAKEGNGCRKTF SRSTKQITFIRIHKGSQVCRSECGKIFRNPRYF
 SVHKKIHTGERPYVCQDCGKGFVQSSSLTQHQRVHSGERPFECQECGRTFNDRSAISQHLRHTHTGAKPYK
 CQDCGKAFRQSSHLIRHQRTHTGERPYACNKCGKAFVQSSHLIGHQRTHTNRKTRKKKQPTS

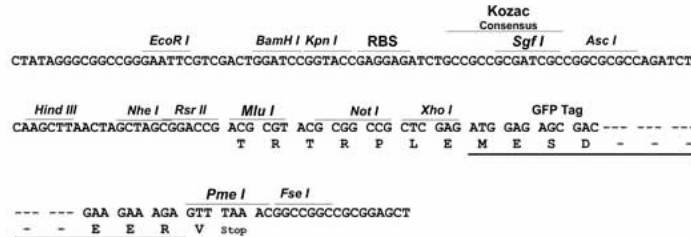
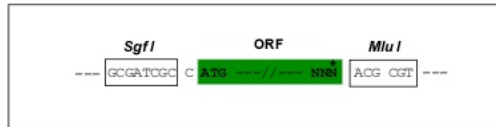
TRTRPLE - GFP Tag - V

Restriction Sites:

SgfI-MluI

Cloning Scheme:

Cloning sites used for ORF Shutting:


ACCN: NM_016325

ORF Size: 1863 bp

OTI Disclaimer: The molecular sequence of this clone aligns with the gene accession number as a point of reference only. However, individual transcript sequences of the same gene can differ through naturally occurring variations (e.g. polymorphisms), each with its own valid existence. This clone is substantially in agreement with the reference, but a complete review of all prevailing variants is recommended prior to use. [More info](#)

OTI Annotation: This clone was engineered to express the complete ORF with an expression tag. Expression varies depending on the nature of the gene.

Components: The ORF clone is ion-exchange column purified and shipped in a 2D barcoded Matrix tube containing 10ug of transfection-ready, dried plasmid DNA (reconstitute with 100 ul of water).

Reconstitution Method:

1. Centrifuge at 5,000xg for 5min.
2. Carefully open the tube and add 100ul of sterile water to dissolve the DNA.
3. Close the tube and incubate for 10 minutes at room temperature.
4. Briefly vortex the tube and then do a quick spin (less than 5000xg) to concentrate the liquid at the bottom.
5. Store the suspended plasmid at -20°C. The DNA is stable for at least one year from date of shipping when stored at -20°C.

RefSeq: [NM_016325.3](#), [NP_057409.1](#)
RefSeq Size: 2743 bp

RefSeq ORF: 1866 bp

Locus ID: 10782

UniProt ID: [Q96GC6](#)

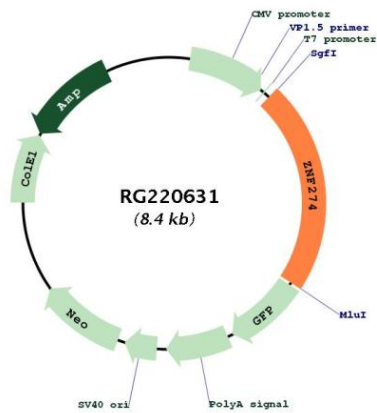
Cytogenetics: 19q13.43

Protein Families: Transcription Factors

Protein Pathways: Neurotrophin signaling pathway

Gene Summary: This gene encodes a zinc finger protein containing five C2H2-type zinc finger domains, one or two Kruppel-associated box A (KRAB A) domains, and a leucine-rich domain. The encoded protein has been suggested to be a transcriptional repressor. It localizes predominantly to the nucleolus. Alternatively spliced transcript variants encoding different isoforms exist. These variants utilize alternative polyadenylation signals. [provided by RefSeq, Jul 2008]

Product images:



Circular map for RG220631