

## Product datasheet for **RG220620**

### KIAA2026 (NM\_001017969) Human Tagged ORF Clone

#### Product data:

Product Type:	Expression Plasmids
Product Name:	KIAA2026 (NM_001017969) Human Tagged ORF Clone
Tag:	TurboGFP
Symbol:	KIAA2026
Mammalian Cell Selection:	Neomycin
Vector:	pCMV6-AC-GFP (PS100010)
E. coli Selection:	Ampicillin (100 ug/mL)
ORF Nucleotide Sequence:	>RG220620 representing NM_001017969 Red=Cloning site Blue=ORF Green=Tags(s)

TTTTGTAATACGACTCACTATAGGGCGGCCGGGAATTCGTCGACTGGATCCGGTACCGAGGAGATCTGCCGCC**CGATCGCC**

ATGAGTGTGCCCGGGACGCCGGGAGCGATGGAGCCGGCTGGGGAGGAAGAGCGGCCGCCACCGCGGCCG  
AAGGAGAGGACGACGAGGAGGAGGTGGCAGCGCGGCCAGACCTCAGGGCCGGCCACGGAAAGGAGTGC  
CTCCTCGTGGAGGACGCGGACGATCAGGAGGAAGAGATGGAGGCGATGGTGATCGGAGGCGGTTGCTGC  
AAGGAGCAGGAGCTGACCTACGAGCTACAGCAGGGCTACCGCATCCTGGGCGAGTTCCTGCAGGAAGC  
ACCGGGCCCTCACCGCCCCCTTTCTGCAGCCCTGGGGGGCGTTGCCACCGCGGAGGAGGAGGTGGCGGA  
AGGGCCGCGCAGCGGGGGCGGGCGGTCGCGCCTTCCCGCAGCAGCCCGGACAGGGCATGTGTCTGCTG  
CAGATGGAAGAGAAGTTCGCCAGCGGCCAGTACGGGGGCATCACCGAGTTCGTGGCGGACTTCAGGTTGA  
TGCTGGAGACGTGCTACCGCCTGCACGGAGTGGACCACTGGATCTCCAAACAGGGCCAGAAGCTGGAGAT  
GATGCTGGAGCAGAAGTTAGCGCTTCTCTCGGCACTTGAGAGAAAAGACAACGATAGCAGTTACATCT  
AGAGGCTATTATGGATTGGAGGATGAGAAGGAACTGCATGTACCTCAACAAGGCGTCGGTCAACACCGC  
GAAGTTTGGCAGGCTTGACAAGTGGAGTTTTTGAATCTATAATGGTTCAAGTTTTGAGACAGGAAGAACA  
GCTGAGAGCAAAAAGAAAAAGGCTTCGGGAGCAGGAAAGAAAAGCAGAAGAAGCTAGTCAAAG  
GAAATAGAAGAAATGGGAAAGAAAACCTTCTAGCTCAAGCAGCTCCAACCTGTATGGAGACCATGTGGAAA  
TTCCAGCTATTGGGCATTTCTTTGTTTAGCTCAGCAAATTTCAAATTTGCCAGAAATAGCTTTTTACGA  
ATTGGAACGTTGTCTTCTGATGCCTCAGTGAATGCTTTTCTATCGAAAATAATGACTTCTCTATTAAGT  
CCTCCCCATCGCAGACCTACCTTACATCGAAGACCTACTTTGCCTTATAGGACCTGGGAAGCAGCGCTGA  
GGCAGAAAAGTACAACAGTGGTACACTGCTGTAGGGCAAATGAAAATCCTGATACTGTGCTGAAAAACT  
GGGTTGTGTCTCAGTTTTTAAAGTCTTGGAGAAGTTAATCCATTGGAAGAAAAACCTTTTCACGAA  
CTACCTTTTTACCAAAAAGTGTGGCTACTTAAGGGTCTTTGTGACTTTGTGTATGAAACAAAAAGGAAG  
TCAAGATGCTGTACTTGGACAGCCTATCCATGAATGCAGGGAAGTTATCTTGGTTATGATTATTTGGA  
GAATGCTTATGTACATTTCCACAGTTCTGTGGTGCAGATGACGGATTATAAACAGAGACCCCTTCAG  
GCCCCAGAAATTTCCAATTTCCACCAATTAATAACAAGAGTACCTCGGATTAATTTGGAGAAATGAAAT  
GTGACTATGTTAGTACAAGTAATGGAGAACATAGATGTAGCAGAGATAGCCTGCCCTCTCTTCAAGAA



[View online »](#)

AGAGCAGGAAAAAATATTTTGATCCAGCTTGCTGTCTGCTAAAATGATCTTGGATAATCATGACATCTCT  
 GTTGAAATGGGAGTAAAAATCCAACATGAAATTAGAATTCGCAGGCCTTGTGAAATTAAAAAACTGATT  
 GTTGTAAGAAAAATTTAGAGAAACCAAGGAGTCCAGGGGAAGTTACTGGCTTTGGAGAGCCTCTTAGTCC  
 AGGTGAAATAAGGTTTATAGAAAATCAGGAAAAATACGGTGAAGCTTCCAGAATAAAGATTGAACCCAGT  
 CCATTAAGAAAAATCTCTAAAATCTTGCCAAATACATGTAATGGAAGTCACAGTGATCATCCAGAAA  
 TTAAGTCCACAAAAGTTGTAAGGGATATTCTATTAGAGCAGTCACTACAGAGCCACAAGAACTCAAAT  
 AACTAAAATGAGGGCAAAAAGAAGAAAAAGAAAAAGAAAAATGAAAGATGTTTTGAAAGAAAACTTA  
 CAGAGAAAAGCGTGAAGGCTTCTATTCTTGCATTCAAGTCTTACAAAACCTGAGATCCAGAATAAGTTAT  
 TGATCATCAAAAAAAGCAAAAACAAGAAGCACAAATCTGGAAAAAATCCGCTCTCAAAAAAGCAAT  
 CACAAAGAAGAGGAAAAGTGCATAAAGTCACTACTGTACCAGAGTTTCAGCTTATTTGCACTAATCTT  
 GATGAACTCAGGGAAATTAATCACAAAAATCGAGAATGAACTCAAAGATCTGGAAAACAGTAGAAAAAAT  
 CGGGAAAATGGTATCATCGGAGGCAAGCTGTAAAAGAATTACATAGTACATTGATACGCTTTTTAAATGA  
 ATTGCTGCCATGGGAACCAAGTAAATGAAGGCTTTCAAAGAACAGGAGCCGCTGAAGAAAGACTAT  
 GATGATTTGAGAAGACAACCTGATCATGATACATTTAATAGAGAATGAGGACTGATGAAGGTGAAG  
 GAGATCTTGGAAAAGACTCTCCTAAGGGAGAAATCAGTAAGTCTATAGACTCAACAGAACCTCTGGATAT  
 CCTGGAGAAAGATCACTTTGATTGATGATATGAAGTTGTCAGAAATAGATTTTCTATGGCTAGAAGC  
 AAGCTGTTGAAAAAGGAATTGCCTTCAAAGACTTACCGAAGACTGCTTAAAAACTTAAACGACAGT  
 CCAAAACAACTGATTATGTGGATGACAGCACAAAAGAGCTTTCTCCAAGGAAGAAGGCAAGTAAAGCAC  
 AAATGAGACAACAGTTGAGAATCTAGAAAGTGTGTGCAGATTGACTGTTTCAGTGAATCAAAGCATACA  
 GAGCCATCATTTCCAGAGTCATTTGCCTCATTGGATTGACTGTTTCAGTGAATCAAAGCATACA  
 AACCATTGAGGCTTTGCTTGCAAAAGAAATTTGGGAATAAAGTACCTTAAACAAATCACTGCCTCCTTC  
 CACAGGTAGAAAATGCTCTTGTGTGGAAAACCAAGTCTTACAAAATGGTATACAAAATGCCCTGAGCCAGTGGT  
 GCATTGACCTGCCACACCAATACAAAAGTCTTACAAAATGGTATACAAAATGCCCTGAGCCAGTGGT  
 TGCCAATAGATCTTCAAAAATAGCTCTGTAAGGATTGAGGTGCAGCCTATGGTGGATCCTAAAACAGGAGA  
 AAAAATCATGCAGCAAGTCTTATTCTGCCTAAGAATTTGTGATTGAGCATAAAGAAGGAAAAAGCAGTT  
 GCAAAAAGAAGTGCACCACTTCAACAGAAAAGTACAGAACAACATTGTTTCATCTTTCCACAGACAACAA  
 ATATAAATTTCTTTAGCATCAGTTTTTGTCAACTCACCAGGAAGTGTCTACCCAACCTACCAATAC  
 AGCTTTCAACAAAACAATTACACCTTTATCAAATATAAGTAGTGTAGACCACAGCCTTTGTGCGCTGTA  
 ACCTCTGTAAGTAACTTATTAACACCATCAGTTAAGACTAGCCAGAGTGAGGCAGGAAAAGCCAAGAAATG  
 CAGTTTCAGCAGCCACATTCCTTGCAGTGTTCACCGACCATTTCTCCACAGTGCAGCCTCTGTC  
 ATCAACAACAACACTAAATGGGTCTACAAATCCTGGTAGTTCCTTCAACTGTTTTGCACAACAGACTGCT  
 GATTTCTTCTGAAGCAAGCAAGAGCTGAAAAGTGTGTGCATAAGAGATTCACAGTCAATTTGTTAGGA  
 CACGAGGTGGGAACACTGGAGTTGTAAGGACAGACCAACCCAGATCAAAATCACCCTAACTGTATC  
 TTCAAGTTGAGTTTTCACTTTTGTCTCCTCAGCTGCAGGCATTTCTGGTGCCAAAATCAACAACCTTCTCC  
 TCTGCTTTTTACCTGTAGCTGGAACAACACTACTACATCTAGTCTTTACCTTTTAGCCAAACACCAACT  
 CTGTTTCCATTCCAGTACTTTGCCCCATCCATGGGGAAAAATCTCAAACCTTACATTAGGCCACACCAC  
 TGGCAGTGGTGAATTTGGCCACGTGATAGATAAACTTACACATGCCCTCTTCTCCCTGAAGTCTCT  
 ATTTGTTCTAGTACTCTACTACCATCAACAACAAGTAGTTCGGTAAGTGAATTAGCATATCAGCAGCAA  
 AATTTGGACAAAACAATGCAAAATATTATCATACTCAAACCTTAAACAGCAACAAGTAGATTATACACAAA  
 AAGTTACCCTGTTACAAGGTGAGAAGCAACAGCAGCAACAATGGAGATGTAATCAGTGGGACTCCAGTT  
 CAGAAAATGATGCTGGTATCAGTCCATCTATTCTTTCTTCTGGCAATGGAAGTGAATTAATATGACAC  
 CTGCGCTGACATCTACAGGTGTTTCTGCCAGAAATTAGTTTTTATTAATGCCCCAGTTCCTAGTGGTAC  
 ATCAACCCCAACTCTTGTGAGAAATCATTAAAACAACTCTTCTCCTCATTGCATAAAGCATATGTT  
 AAGACTCCAGAGCAACCCCAATAGTACTGATTCGGTCTACAGTGGGCACACCAATAAAAAATAAATTCAT  
 CACCAGCTGTGTCTCAGATAAAGGATGTGAAAATGGACTAAACATAGGTCAAGCAATTGTAATACTTC  
 AGGCAGTGTGCCAGCTATACCATCAATTAACATATTACAAAATGTAACCCCAAAAAGGAGAAGACAAAAGT  
 AGCAAGGGCTATATTTGCCATTGTCAACAAGTGGTAATTCAGTCCAGTAAGCTCAAATTTGTGAGTC  
 AGAATATTACCCCTGTTAATGAATCAGTGGTTTCTTCAAGCAAGAGCAGTAAATGTCTTTAGTTACCGG  
 AGCAAAATTTATCTTTGGGTTCTTTCCAGTGACCTCAGCCTCTGCTTTCAGCTGGGGCACAACCTCCTGTT  
 TTAGTCAAGTGGAAATGATACCTCTTCAAGAATTATGCCTATTTTGTCAAATAGACTTTGCTCATCAAGTC  
 TCGGAAACACTGTGGCTATATCAACTGTGAAAACAGGACACCTTGCATCATCTGTTCTGATTTCAACTAC  
 ACAACCAGTAGTGTCTCCTAAATGTTTAAACATCAGCTTTGCAAAATCCTGTTACGGTTGCCTTACCTACA

CCTGCGACTACATCCCCTAAAATAATAAACACAGTTCCACATTCGGCAGCAGTACCAGGAGCCACACGTT  
CTGTATCTATTTCTAAAAGACAATCTCGGACTTCACTCCAGTTCATTACCAGGGATTTCAACTACAGT  
GCCAACAAATGTAACACAAAATAAACCTCAAAGTGAATTGTCGTCCCTTTCAACAAGTCCAGGTAATA  
ACTAATACGTCCAATTTTGCTTCTGCCAAATCAGCAAGCTTTAGTAAAAACCCCGATTACAGTTCTG  
CTCCAGGTGGCACTACCATTACACGGCTTCGGCACCATCCAATGTAAGTCTAGTCTAGTGGGAGTCAAGT  
CAGTGAACCTTGTATTTCAGCAAAAAATAGTCATCAATACCAGTACACCTTTGGCACCTGGTACTCAGATT  
ATGATTAACGGAAACCCGTTTATTGTTCCACCACAAGGCTTGGAGCTGGCAGCCATGTTCTCCTTATAT  
CTACTAATCCAAAATATGGAGCCCCCTTAGTTCTTAACAGTGGCCAAGGCATTCAATCTACACCAATAGA  
TAACTCTGCCAGAAGATCACACTAGCATCAAATAATTCCTTAAGTGGCCAACCTCTACAACATCCTCTA  
AGAAGCCCTACAAAATTTATAAACTCTTTTGGGAATGCAAGTCTATACCCACAGTACATACATCACCAC  
AACTCATAAACACAAGTCTAAGGTTCTGTTCCACCTCTGTACCAACAGTATCACTGACTTCAGTAAT  
TAAGTCTCCAGTACTCTTTGGCTAAGACATCTTTGGTTTCTGCCATTTGCCCCAGTAATCCTCCACTG  
CCAAGTAGCACTTCAGTGTTCATTTGGACCCACCTGTCAAAAAATTGTTGGTTAGCCAGAAGGAGCCA  
TTTTGAATACCATAAACTCCAGCATCTAAGGTTTCTCACTCTCTCCATCTCTCTCAGATTGTTGT  
ATCTGCCAGTCGAAGCTCTGCTGTCTCCCTGCTTTTCAGTCGTGGGCTTAGAGAAGCCTGACAGA  
GCTGCATCT

ACGCGTACGCGGCCGCTCGAG - GFP Tag - GTTTAA

**Protein Sequence:** >RG220620 representing NM\_001017969  
 Red=Cloning site Green=Tags(s)

```

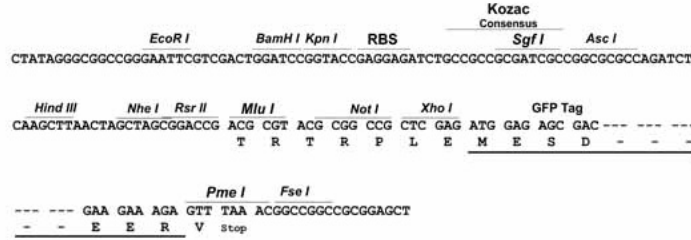
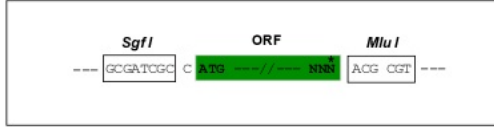
MSVPGTPGAMEPAGEERPPPAEGEDDEEEVAAAQTS GPAHGRSASSLEDADDQEEEMEAMVIGGCC
KEQELTYELQQGYRILGEFLQEKHRGLTAPFLQPLGGVATAEEEAEGPRSGRGRAPQQPGQGMCLL
QMEEKFASGQYGGITTEFVADFRMLLETCTYRLHGVHDHWISKQKLEMMLEQKLALLSRHLREKTTIAVTS
RGGYGLDEKGTACTSTRRRSTPRSLAGLTSGVFESIMVQVLRQEEQLRAKEEKRLREQERKEAEEASQK
EIEEWERKLLAQAAPTCMETMWEIPAIGHFLCLAQQILNLP EIVFYELERCLLMPQCNAFLSKIMTLLS
PPHRRPTLHRRPTLPYRTWEAALRQKVQWYTA VGQTENPDNCAEKLGLCPQFFKVLGEVNPLEEKPFHE
LPFYQKVWLLKGLCDFVYETQKEVQDAVLGQPIHECREVILGYDYLENAYVHFPQFCGADVRIYKQRPFQ
APEFPIPIKIQRVPRIKLEKLCQDVVSTNGEHRCSRSLPSSFKKEQENNDPACCPAKMILDNDHDS
VEMGVKSNEYIRIRRPC EIKKTDCCKENLEKPRSPGEVTFGGEPLSPGEIRFIENQEKYGEASRIKIEPS
PLKENTLKSCQIHVNGSHSDHPEINCHKVVRDILLEQSLQSHKLLKLTMRRAKKKKKKKKLKDVLNENL
QRKREGLHSLAFKSYKPEIQNKLLI IKKKAKHKKHKS GKKSVSKKAITKRKTKVIK SPTVPEFQLICTNL
DELRELITKIENELKDLENSRKKSGKWYHRRQAVKELHSTLIRLLNELLPWEPKLMKAFQRNRSRLKKDY
DDFRRQPDHDTFNRELWTTDEGEGDLGKDSPKGEISKSIDSTEPLDILEKDHFDSDMMKLSEIDFPMARS
KLLKKELPSKDLPKTLKTLKRQSKQTDYVDDSTKELSPRKKAKLSTNETTVENLESDVQIDCFSESKHT
EPSFPESFASLDSVPVSTLQKGTKPIQALLAKNIGNKVTLTNQLPSTGRNALAVEKPVLSPEASPIKP
ALTCHTNTKGPLQMVKMPCGQWLPIDLQNSSVIQVQPMVDPKTGEKIMQVILPKNFVIQKHEGKAV
AKEVPPQQKGTQHCSSFPQTINSSLASVFNPSGTVSTQLPNTAFNKITITPLSNISSARPQPLSPV
TSVSNLLTPSVKTSQSEAGKAKNAVSAATFSLPSASPTISSTGQPLSSTTTLNGSTNPGSSFNCFQAQTA
DSSEAKQELKTVCIKRDQSILVRTRGGNTGVVQVQTNPDQNSPNTVSSSSVFTFAPQLQAFVLPKSTTSS
SAFSPVAGTTTTSSLSPFSQTPTSVSI PASFAPSMGKNLKLTLGHTTGSGDLGHVIDKTSHPSSPLKSS
ICSSTLLPSTTSSSVSISISAANFGQNNANIHTPTKQQQVDYITKSYPVTRSEATAATNGDVISGTPV
QKLMVLSAPSILSSNGTA INMTPALSTGVS AQKLVFINAPVPSGTSTPTLVAESLKQTLPPPLHKAYV
KTPEQPQIVLIPSTVGTPIKINSSPAVSQIKDVKIGLNIGQAI VNTSGTVPAIP SINILQNVTPKGEDKS
SKGYILPLSTSGNSVPVSSNFVSNITPVNESVSSARAVNLSVTGANLSLGSFPVTSASASAGAQP PV
LVSGNDTSSRIMPILSNRLCSSSLGNTVAISTVKTGHLASSVLISTTQPVVSPKCLTSALQIPVTVALPT
PATTSPKIIINTVPHSAAVPGATRSVSIKRSRTSLQFHSPGISTTVPTNVNTNKPQTELSLSTSPGKI
TNTSNFASLPNQALVKTPSYSSAPGGTTIHTASAPSNVTSLVGSQFSEPCIQKIVINTSTPLAPGTQI
MINGTRFIVPPQGLGAGSHVLLISTNPKYGAPLVLSNGGQIQSTPIDNSAQKITLASNNSLSGQPLQHPL
RSPTKFINSGNASSIPTVHTSPQLINTTAKVPVPPVPTVSLTSVIKSPATLLAKTSLVSAICPSNPPL
PSSTSVFHLDPVVKLLVSEGA I LNTINTPASKVSSLSQIVVSASRSPASVFPFQSSGLEKPDRAAS
  
```

TRTRPLE - GFP Tag - V

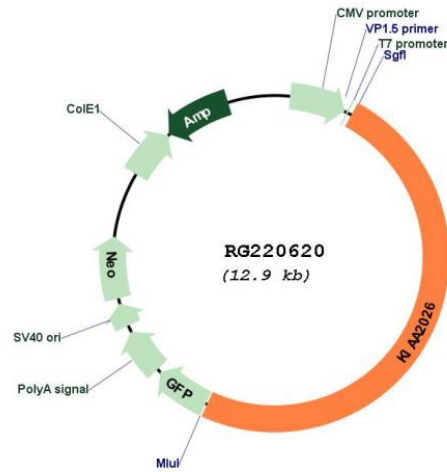
**Restriction Sites:** SgfI-MluI

Cloning Scheme:

Cloning sites used for ORF Shutting:



Plasmid Map:



ACCN: NM\_001017969  
 ORF Size: 6309 bp

**OTI Disclaimer:** Due to the inherent nature of this plasmid, standard methods to replicate additional amounts of DNA in E. coli are highly likely to result in mutations and/or rearrangements. Therefore, OriGene does not guarantee the capability to replicate this plasmid DNA. Additional amounts of DNA can be purchased from OriGene with batch-specific, full-sequence verification at a reduced cost. Please contact our customer care team at [custsupport@origene.com](mailto:custsupport@origene.com) or by calling 301.340.3188 option 3 for pricing and delivery.

The molecular sequence of this clone aligns with the gene accession number as a point of reference only. However, individual transcript sequences of the same gene can differ through naturally occurring variations (e.g. polymorphisms), each with its own valid existence. This clone is substantially in agreement with the reference, but a complete review of all prevailing variants is recommended prior to use. [More info](#)

**OTI Annotation:** This clone was engineered to express the complete ORF with an expression tag. Expression varies depending on the nature of the gene.

**Components:** The ORF clone is ion-exchange column purified and shipped in a 2D barcoded Matrix tube containing 10ug of transfection-ready, dried plasmid DNA (reconstitute with 100 ul of water).

**Reconstitution Method:**

1. Centrifuge at 5,000xg for 5min.
2. Carefully open the tube and add 100ul of sterile water to dissolve the DNA.
3. Close the tube and incubate for 10 minutes at room temperature.
4. Briefly vortex the tube and then do a quick spin (less than 5000xg) to concentrate the liquid at the bottom.
5. Store the suspended plasmid at -20°C. The DNA is stable for at least one year from date of shipping when stored at -20°C.

**RefSeq:** [NM\\_001017969.3](#)

**RefSeq Size:** 7204 bp

**RefSeq ORF:** 6312 bp

**Locus ID:** 158358

**UniProt ID:** [Q5HYC2](#)

**Cytogenetics:** 9p24.1

**Protein Families:** Druggable Genome