

Product datasheet for **RG220612**

BRD2 (NM_005104) Human Tagged ORF Clone

Product data:

Product Type:	Expression Plasmids
Product Name:	BRD2 (NM_005104) Human Tagged ORF Clone
Tag:	TurboGFP
Symbol:	BRD2
Synonyms:	BRD2-IT1; D6S113E; FSH; FSRG1; NAT; O27.1.1; RING3; RNF3
Mammalian Cell Selection:	Neomycin
Vector:	pCMV6-AC-GFP (PS100010)
E. coli Selection:	Ampicillin (100 ug/mL)



[View online »](#)

ORF Nucleotide Sequence:

>RG220612 representing NM_005104
 Red=Cloning site Blue=ORF Green=Tags(s)

TTTTGTAATACGACTCACTATAGGGCGGCCGGAATTCGTCGACTGGATCCGGTACCGAGGAGATCTGCC
 GCC**CGATCGCC**

ATGGACATGGGTACTATTAAGAGGAGACTTGAACAATTATTATTGGGCTGCTTCAGAGTGTATGCAAG
 ATTTTAATACCATGTTACCAACTGTTACATTTACAACAAGCCCACTGATGATATTGTCCTAATGGCACA
 AACGCTGGAAAAGATATTCCTACAGAAGTTGCATCAATGCCACAAGAAGAACAAGAGCTGGTAGTGACC
 ATCCCTAAGAACAGCCACAAGAAGGGGGCCAAGTTGGCAGCGCTCCAGGGCAGTGTACCAGTGCCCATC
 AGGTGCCTGCCGTCTTCTGTGTACACACAGCCCTCTATACTCCTCCACCTGAGATACCTACCACTGT
 CCTCAACATTCACCACCATCAGTCATTTCTCTCCACTTCTCAAGTCTTGCACTCTGCTGGACCCCCG
 CTCCTTGTGTTACTGCAGCTCCTCCAGCCAGCCCTTGCCAAGAAAAAGCGTAAAGCGAAAGCAG
 ATACTACCACCCCTACACCTACAGCCATCTTGGCTCCTGGTTCTCCAGCTAGCCCTCTGGGAGTCTTGA
 GCCTAAGGCAGCACGGCTTCCCCTATGGGTAGAGAGAGTGGTCGCCCCATCAAGCCCCACGCAAAGAC
 TTGCTGACTCTAGCAACAACACCAGAGCTCTAAGAAAGGAAAGCTTTCAGAACAGTAAACATTGCA
 ATGGCATTGTAAGGAGTACTCTTAAGAAGCATGCTGCCTATGCTTGGCCTTCTATAAACAGTGGGA
 TGCTTCTGCACCTGGCCTGCATGACTACCATGACATCATTAAAGCACCCCATGGACCTCAGCACTGTCAAG
 CGGAAGATGGAGAACCGTGATTACCGGGATGCACAGGAGTTTGTGCTGATGTACGGCTTATGTTCTCCA
 ACTGCTATAAGTACAATCCCCAGATCACGATGTTGTGGCAATGGCACGAAAGCTACAGGATGATTTTGA
 GTTCCGTTATGCCAAGATGCCAGATGAACCACTAGAACCAGGGCCTTACCAGTCTCTACTGCCATGCC
 CCTGGCTTGGCCAAATCGTCTTCAGAGTCTCCAGTGAGGAAAGTAGCAGTGAGAGCTCCTCTGAGGAAG
 AGGAGGAGGAAGATGAGGAGGACGAGGAGGAAGAAGAGAGTGAAGCTCAGACTCAGAGGAAGAAAGGGC
 TCATCGTTAGCAGAACTACAGGAACAGCTTCGGGCAGTACATGAACAACCTGGCTGCTCTGCCAGGGT
 CCAATATCCAAGCCCAAGAGGAAAAAGAGAGAAAAAGAGAAAAAGAAACGGAAGGCAGAGAAGCATC
 GAGGCCGAGCTGGGGCCGATGAAGATGACAAGGGGCTAGGGCACCCCGCCACCTCAACCTAAGAAGTC
 CAAGAAAGCAAGTGGCAGTGGGGTGGCAGTGTGCTTTAGGCCCTTCTGGCTTTGGACCTTCTGGAGGA
 AGTGGCACCAAGCTCCCCAAAAGGCCACAAGACAGCCCACTGCCCTGCCTACAGGTTATGATTGAG
 AGGAGGAGGAAGAGAGCAGGCCATGAGTTACGATGAGAAGCGGCAGCTGAGCCTGGACATCAACAATT
 ACCTGGGAGAAGCTGGGCCGAGTTGTGCATATAATCCAAGCCAGGGAGCCCTTTACGTGATTCAAAC
 CCAGAAGAGATTGAGATTGATTTTGAACACTCAAGCCATCCACACTTAGAGAGCTTGAGCGCTATGTCC
 TTTCTGCTACGTAAGAAACCCCGGAAGCCCTACACCATTAAGAAGCCTGTGGGAAAGACAAGGAGGA
 ACTGGCTTTGGAGAAAAAGCGGGAATTAGAAAAGCGGTTACAAGATGTCAGCGGACAGCTCAATTCTACT
 AAAAAGCCCCCAAGAAAGCAATGAGAAAACAGAGTCATCCTCTGCACAGCAAGTAGCAGTGTACAGCC
 TTAGCGCTTCCAGCTCTAGCTCAGATTCAGCTCCTCCTCTTCTCGTCGTCGCTTTCAGACACCAGTGA
 TTCAGACTCAGGC

ACGCGTACGCGGCCGCTCGAG - GFP Tag - GTTTAA

Protein Sequence: >RG220612 representing NM_005104
 Red=Cloning site Green=Tags(s)

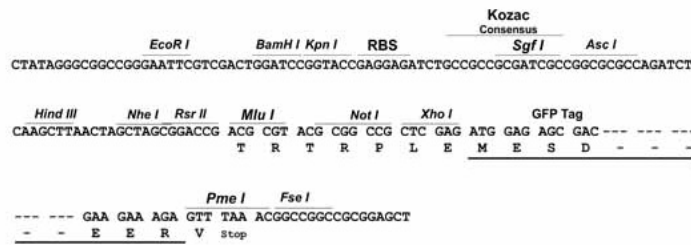
MDMGTIKRRLNNYYWAASECMQDFNTMFTNCYIYNKPTDDIVLMAQTLEKIFLQKVASMPQEEQELVVT
 IPKNSHKKGAKLAALQGSVTSAHQVPAVSSVSHTALYTPPPEIPTTVLNIPHPSVISSPLLKSLHSAGPP
 LLAVTAAPPAQPLAKKKGVKRAADTTTTPTAILAPGSPASPSPGSLPKAARLPPMRRESGRPIKPPRKD
 LPDSQQQHQSCKKGLSEQLKHCNGILKELL SKKHAAYAWPFYKPVASALGLHDYHDIKHPMDLSTVK
 RKMENRDYRDAQEFAADVRLMFSNCYKNPPDHVVMARKLQDVFEFRYAKMPDEPLEGPLPVSTAMP
 PGLAKSSSESSSESSSESSSEEEEEDEEEEESESSSEERAHRLAELQEQLRAVHEQLAALSQG
 PISKPKRKREKKEKKKKA EKHRGRAGADEDDKGPRA PRPPQPKSKKASGSGGSAALGPSGFPSGG
 SGTKLPKATKTAPPALPTGYDSEEEESRMSYDEKRQLSLDINKLPGEKLRVVIHQAREPSLRDSN
 PEEIEIDFETLKPSTLRELERVLSCLRKKPKPYTIKKPVGKTKHEELALEKKRELEKRLQDVSGQLNST
 KKPKKAN EKTESSAQQVAVSRLSASSSSSDSSSSSSSSSDTSDSDSG

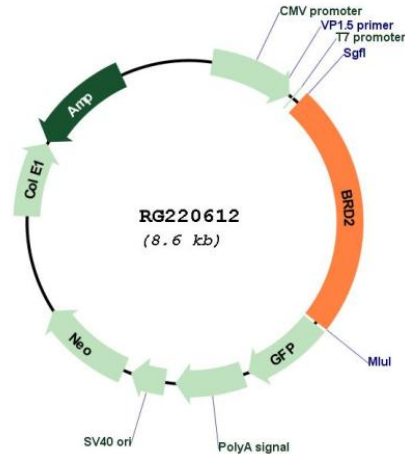
TRTRPLE - GFP Tag - V

Restriction Sites: SgfI-MluI

Cloning Scheme:

Cloning sites used for ORF Shuttling:



Plasmid Map:


ACCN: NM_005104

ORF Size: 2403 bp

OTI Disclaimer: Due to the inherent nature of this plasmid, standard methods to replicate additional amounts of DNA in *E. coli* are highly likely to result in mutations and/or rearrangements. Therefore, OriGene does not guarantee the capability to replicate this plasmid DNA. Additional amounts of DNA can be purchased from OriGene with batch-specific, full-sequence verification at a reduced cost. Please contact our customer care team at custsupport@origene.com or by calling 301.340.3188 option 3 for pricing and delivery.

The molecular sequence of this clone aligns with the gene accession number as a point of reference only. However, individual transcript sequences of the same gene can differ through naturally occurring variations (e.g. polymorphisms), each with its own valid existence. This clone is substantially in agreement with the reference, but a complete review of all prevailing variants is recommended prior to use. [More info](#)

OTI Annotation: This clone was engineered to express the complete ORF with an expression tag. Expression varies depending on the nature of the gene.

Components: The ORF clone is ion-exchange column purified and shipped in a 2D barcoded Matrix tube containing 10ug of transfection-ready, dried plasmid DNA (reconstitute with 100 ul of water).

Reconstitution Method:

1. Centrifuge at 5,000xg for 5min.
2. Carefully open the tube and add 100ul of sterile water to dissolve the DNA.
3. Close the tube and incubate for 10 minutes at room temperature.
4. Briefly vortex the tube and then do a quick spin (less than 5000xg) to concentrate the liquid at the bottom.
5. Store the suspended plasmid at -20°C. The DNA is stable for at least one year from date of shipping when stored at -20°C.

RefSeq: [NM_005104.2](#), [NP_005095.1](#)

RefSeq Size: 4693 bp

RefSeq ORF: 2406 bp

Locus ID: 6046

UniProt ID: [P25440](#)

Cytogenetics: 6p21.32

Domains: BROMO

Protein Families: Protein Kinase

Gene Summary: This gene encodes a transcriptional regulator that belongs to the BET (bromodomains and extra terminal domain) family of proteins. This protein associates with transcription complexes and with acetylated chromatin during mitosis, and it selectively binds to the acetylated lysine-12 residue of histone H4 via its two bromodomains. The gene maps to the major histocompatibility complex (MHC) class II region on chromosome 6p21.3, but sequence comparison suggests that the protein is not involved in the immune response. This gene has been implicated in juvenile myoclonic epilepsy, a common form of epilepsy that becomes apparent in adolescence. Multiple alternatively spliced variants have been described for this gene. [provided by RefSeq, Dec 2010]