

Product datasheet for **RG220574**

RED2 (ADARB2) (NM_018702) Human Tagged ORF Clone

Product data:

Product Type:	Expression Plasmids
Product Name:	RED2 (ADARB2) (NM_018702) Human Tagged ORF Clone
Tag:	TurboGFP
Symbol:	RED2
Synonyms:	ADAR3; RED2
Mammalian Cell Selection:	Neomycin
Vector:	pCMV6-AC-GFP (PS100010)
E. coli Selection:	Ampicillin (100 ug/mL)



[View online »](#)

ORF Nucleotide Sequence:

>RG220574 representing NM_018702
 Red=Cloning site Blue=ORF Green=Tags(s)

TTTTGTAATACGACTCACTATAGGGCGGCCGGGAATTCGTCGACTGGATCCGGTACCGAGGAGATCTGCC
 GCC**GCGATCGCC**

ATGGCCTCGGTCCTGGGAGCGGCAGAGGGTCTGGAGGGCTGAGCAGTCAACTCAAATGCAAGTCCAAGA
 GGAGGAGGAGGCGGAGGTCCAAGCGGAAAGATAAAGTAAGCATATTGTCAACCTTCTCGCTCCTTTCAA
 GCACCTGAGTCTGGCATCACAACACGGAGGATGACGACACCCTCAGTACCAGCAGCGGGAGGTGAAG
 GAGAACCGCAACGTGGGCAACCTGGCCGCGGCCACCGCCCTCCGGGGACCGGGCCGGGGCGCGCGC
 CCGGCGCAAGAGGAAGCGGCCGCTGGAGGAGGGGAATGGGGCCACTTGTGAAACTGCAGCTGGTCTG
 GAAGAAGTGTCTGGTGGTGGCGCCCAAGAACGCGCTGGTGCAGTGCACGAGCTGAGGCCGGGCTG
 CAGTACCGGACAGTGTGCGACAGGGCCCGGTGCATGCCCGGTCTTCGCGGTAGCGGTGGAGGTGAACG
 GGCTCACGTTTCGAGGGCACAGGCCCCACCAAGAAGAAGGCCAAGATGCGCGCGGGGAGCTGGCACTCAG
 GTCCTTCGTGCAGTTCCTCAACGCTGCCAGGCGCACCTGGCCATGGGCGGGGGCCGGGCCCGGCACG
 GACTTCACCTCCGACCAGGCCGATTTCCCGGACACGCTCTTCAGGAGTTCGAGCCCCGGCGCCCGCC
 CCGGACTCGCGGGAGGCCGCCCGGGGACGCGCGCTTCTGTCCGCGGCCTACGGGCGACGGCGGTGCT
 GTGCCGCGCTGGACCTGGTGGGCCGACCCCGCCACCCCGCGGCCCGGGCGAGCGCAACCCCGTGT
 GTGCTGTGAACCGCTGCGCGCCGGGCTGCGTACGTGTGTCTGGCAGAACCGCGGAGCGGCGCGCGC
 GGAGCTTCGTGATGGCCGTGAGCGTGGACGGCAGGACGTTTCGAGGGCTCGGGGCGCAGCAAGAAGCTGGC
 CCGGGGTGAGCCGCGCAGGCCGCACTGCAGGAGCTGTTTCGACATCCAGATGCCCGGCCACGCGCCCGGC
 AGGGCCAGGAGGACGCCAATGCCGAGGAATTCGACAGTCCATATCCAGCTGGTACACAGAAGTTCC
 GCGAGGTGACGACGGACCTCACGCCATGCACGCCGCCATAAAGCGCTGGCAGGAATCGTCATGACCAA
 AGGCCTGGATGCTCGGCAGGCGCAGGTCTGGCCCTGTCCTCGGGGACCAAGTGCATCAGCGGCGAGCAC
 CTAGTGACCAGGGCTGGTGGTGAATGACTGCCACGCGGAGGTCTGGCCCGCGGGGCTTCTGCACT
 TCCTCTACACGCAGCTGGAGCTGCACCTGAGCAAGCGGCGGAGGACTCAGAGCGATCGATATTCGTGCG
 GTTAAAGAAGGTGGCTACCGGCTGCGAGAGAACATCCTCTTCCATCTCTACGTGAGCACCTCCCCCTGT
 GGAGACGCAAGACTCCACTCTCCCTACGAGATCACCACAGACCTGCACAGCAGCAAAACCTCGTCAGGA
 AGTTCGCGGGCACCTGCGCACCAAGATCGAGTCCGGGAAGGGACGGTCCCGTGGTGGCCCCAGCGC
 AGTGCAGACCTGGGACGGCGTCTGCTGGGGGAGCAGCTGATCACCATGTCTGCACGGACAAGATCGCC
 AGGTGGAACGTCTGGGGCTGCAGGGCGCGCTCCTGTCCCACTTCTGGAGCCCCGTGTACCTGCAGAGCA
 TCGTGGTGGGACGCTGCACCACAGGGCCACCTCGCACGCGTATGAGCCACCGCATGGAGGGTGTCCG
 CCAGCTGCCCGCCTCCTACCGGCACAACCGGCCTCTCCTCAGCGGCGTGAGTGACGCCGAGGCGGCCAG
 CCGGGGAAGTCCGCCCTTTCAGCATGAACTGGGTCTGGGCGAGCGCGGACCTGGAGATTATCAACGCCA
 CCACTGGGCGGAGGAGCTGTGGGGGCCATCCCGGCTCTGCAAGCACGTGCTGTCTGCACGGTGGGCGCG
 GCTGTATGGCAGGCTGAGCACACGGACACCCAGCCCTGGAGACACGCCCTCCATGTACTGTGAGGCCAAG
 CTGGGGGCGCACACCTACCAGTCTGTGAAACAGCAGCTGTTCAAGGCCTTTCAGAAGGCTGGCCTGGGCA
 CCTGGGTGAGGAAACCACCGGAGCAGCAGCAGTTTCTACTGACTCTC

AG**CGGACCG**ACGCGTACGCGGCCGCTCGAG - GFP Tag - GTTTAA

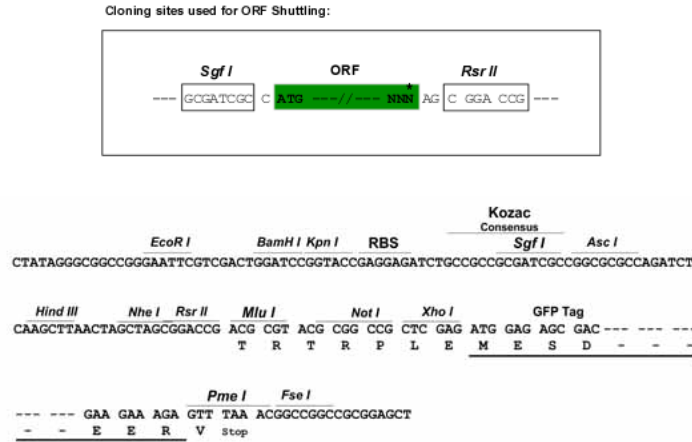
Protein Sequence: >RG220574 representing NM_018702
 Red=Cloning site Green=Tags(s)

MASVLGSGRGGGLSSQLKCKSKRRRRRSKRKDKVSI LSTFLAPFKHLSPGITNTEDDDLSTSSAEVK
 ENRNVGNLAARPPPSGDRARGGAPGAKRRRPLEEGNGGHLCKLQLVWKKLSWSVAPKNALVQLHEL RPGL
 QYRTVSQTGPVHAPVFAVAVEVNLTFEGTGPTKKKAKMRAAELALRSFVQFPNACQAHLAMGGGPGPGT
 DFTSDQADFPDTL FQEFEPAPRPLAGGRPGDAALLSAAYGRRRLLCRALDLVGPTPTPAAPGERNPV
 VLLNRLRAGLRYVCLAEP AERRARSFVMAVSVDGRTFEGSGRSKLLARGQAAQAALQELFDIQMPGHAPG
 RARRTPMPQEFADISQLVTQKFREVTDLTPMHARHKALAGIVMTKGLDARQAQVVALSSGTKCISGEH
 LSDQGLVVDCHAEVVARRAFLHFLYTQLELHLSKRREDSERSIFVRLKEGGYRLRENILFHLVYSTSPC
 GDARLHSPYEITDLHSSKHLVRKFRGHLRTKIESGEGTVPVRGPSAVQTDWGVLLGEQLITMSCTDKIA
 RWNVLGLQGALLSHFVEPVYLQSI VVGS LHTGHLARVMHRMEGVGQLPAS YRHRNRP LLSGVSDAEARQ
 PGKSPFPMNWWVGSADLEIINATTGRRSCGSPRLCKHVL SARWARLYGRLSTRTPSPGDTPSMYCEAK
 LGAHTYQSVKQQLFKAFQKAGLGTWVRKPPEQQQFLTL

SGPTRRRLE - GFP Tag - V

Restriction Sites: SgfI-RsrII

Cloning Scheme:

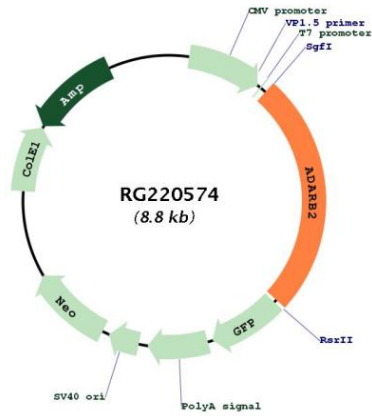


ACCN: NM_018702

ORF Size: 2217 bp

OTI Disclaimer:	<p>Due to the inherent nature of this plasmid, standard methods to replicate additional amounts of DNA in E. coli are highly likely to result in mutations and/or rearrangements. Therefore, OriGene does not guarantee the capability to replicate this plasmid DNA. Additional amounts of DNA can be purchased from OriGene with batch-specific, full-sequence verification at a reduced cost. Please contact our customer care team at custsupport@origene.com or by calling 301.340.3188 option 3 for pricing and delivery.</p> <p>The molecular sequence of this clone aligns with the gene accession number as a point of reference only. However, individual transcript sequences of the same gene can differ through naturally occurring variations (e.g. polymorphisms), each with its own valid existence. This clone is substantially in agreement with the reference, but a complete review of all prevailing variants is recommended prior to use. More info</p>
OTI Annotation:	This clone was engineered to express the complete ORF with an expression tag. Expression varies depending on the nature of the gene.
Components:	The ORF clone is ion-exchange column purified and shipped in a 2D barcoded Matrix tube containing 10ug of transfection-ready, dried plasmid DNA (reconstitute with 100 ul of water).
Reconstitution Method:	<ol style="list-style-type: none"> 1. Centrifuge at 5,000xg for 5min. 2. Carefully open the tube and add 100ul of sterile water to dissolve the DNA. 3. Close the tube and incubate for 10 minutes at room temperature. 4. Briefly vortex the tube and then do a quick spin (less than 5000xg) to concentrate the liquid at the bottom. 5. Store the suspended plasmid at -20°C. The DNA is stable for at least one year from date of shipping when stored at -20°C.
RefSeq:	NM_018702.4
RefSeq Size:	3655 bp
RefSeq ORF:	2220 bp
Locus ID:	105
UniProt ID:	Q9NS39
Cytogenetics:	10p15.3
Gene Summary:	This gene encodes a member of the double-stranded RNA adenosine deaminase family of RNA-editing enzymes and may play a regulatory role in RNA editing. [provided by RefSeq, Jul 2008]

Product images:



Circular map for RG220574