

Product datasheet for **RG220561**

Histone H2A Bbd (H2AFB3) (NM_080720) Human Tagged ORF Clone

Product data:

Product Type: Expression Plasmids
Product Name: Histone H2A Bbd (H2AFB3) (NM_080720) Human Tagged ORF Clone
Tag: TurboGFP
Symbol: H2AB3
Synonyms: H2AB2; H2ABB2; H2AFB; H2AFB3
Mammalian Cell Selection: Neomycin
Vector: pCMV6-AC-GFP (PS100010)
E. coli Selection: Ampicillin (100 ug/mL)
ORF Nucleotide Sequence: >RG220561 representing NM_080720
 Red=Cloning site Blue=ORF Green=Tags(s)

TTTTGTAATACGACTCACTATAGGGCGCCGGGAATTCGTCGACTGGATCCGGTACCGAGGAGATCTGCC
 GCC**CGATCGCC**

ATGCCGAGGAGGAGACGCCAGGGTCTCCGGTGTGGCGCCGGGGCGGACCTGCTCTCGACCG
 TCCGAGCGGAGCTTTCGTTTTTCAGTGAGCCAGGTGGAGCGCAGTCTACGGGAGGGCCACTACGCTCAGCG
 CCTGAGTCGCACGGCGCCGGTCTACCTCGCTGCGGTTATTGAGTACCTGACGGCCAAGTCTGGAGCTG
 GCGGGCAACGAGGCCAGAACAGCGGAGAGCGGAACATCACTCCCCTGCTGCTGGACATGGTGGTTCACA
 ACGACAGGCTACTGAGCACCTTTTCAACACGACCACCATCTCAAGTGCCCTGGCGAGGAC

ACGCGTACGCGGCCGCTCGAG - GFP Tag - GTTTAA

Protein Sequence: >RG220561 representing NM_080720
 Red=Cloning site Green=Tags(s)
 MPRRRRRRGGSSGAGGRGRTCSRTVRAELSFVSQVERSLREGHYAQRLSRTAPVYLAIVIEYLAKVLEL
 AGNEAQNSGERNITPLLLDMVVHNDRLSTLFNTTISQVAPGED

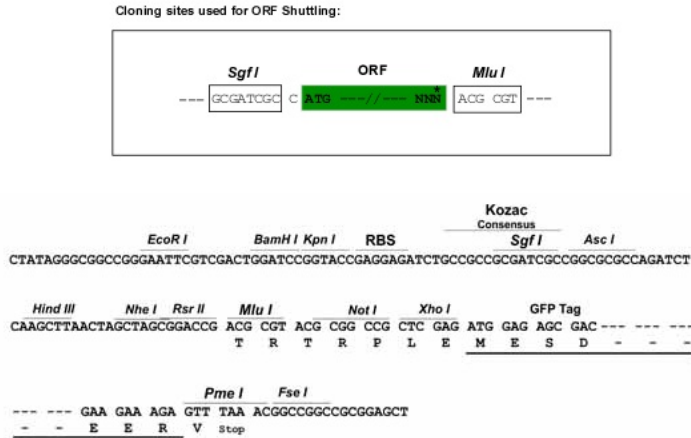
TRTRPLE - GFP Tag - V

Restriction Sites: SgfI-MluI

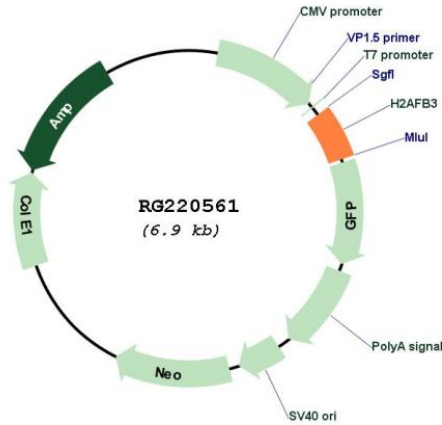


[View online »](#)

Cloning Scheme:



Plasmid Map:



ACCN: NM_080720
 ORF Size: 345 bp
 OTI Disclaimer:

The molecular sequence of this clone aligns with the gene accession number as a point of reference only. However, individual transcript sequences of the same gene can differ through naturally occurring variations (e.g. polymorphisms), each with its own valid existence. This clone is substantially in agreement with the reference, but a complete review of all prevailing variants is recommended prior to use. [More info](#)

OTI Annotation:	This clone was engineered to express the complete ORF with an expression tag. Expression varies depending on the nature of the gene.
Components:	The ORF clone is ion-exchange column purified and shipped in a 2D barcoded Matrix tube containing 10ug of transfection-ready, dried plasmid DNA (reconstitute with 100 ul of water).
Reconstitution Method:	<ol style="list-style-type: none">1. Centrifuge at 5,000xg for 5min.2. Carefully open the tube and add 100ul of sterile water to dissolve the DNA.3. Close the tube and incubate for 10 minutes at room temperature.4. Briefly vortex the tube and then do a quick spin (less than 5000xg) to concentrate the liquid at the bottom.5. Store the suspended plasmid at -20°C. The DNA is stable for at least one year from date of shipping when stored at -20°C.
RefSeq:	NM_080720.3
RefSeq Size:	539 bp
RefSeq ORF:	348 bp
Locus ID:	83740
UniProt ID:	P0C5Z0
Cytogenetics:	Xq28
Protein Pathways:	Systemic lupus erythematosus
Gene Summary:	Histones are basic nuclear proteins that are responsible for the nucleosome structure of the chromosomal fiber in eukaryotes. Nucleosomes consist of approximately 146 bp of DNA wrapped around a histone octamer composed of pairs of each of the four core histones (H2A, H2B, H3, and H4). The chromatin fiber is further compacted through the interaction of a linker histone, H1, with the DNA between the nucleosomes to form higher order chromatin structures. This gene encodes a replication-independent histone that is a member of the histone H2A family. This gene is part of a region that is repeated three times on chromosome X, once in intron 22 of the F8 gene and twice closer to the Xq telomere. This record represents the most telomeric copy. [provided by RefSeq, Oct 2015]