

Product datasheet for **RG220559**

BARHL1 (NM_020064) Human Tagged ORF Clone

Product data:

Product Type:	Expression Plasmids
Product Name:	BARHL1 (NM_020064) Human Tagged ORF Clone
Tag:	TurboGFP
Symbol:	BARHL1
Mammalian Cell Selection:	Neomycin
Vector:	pCMV6-AC-GFP (PS100010)
E. coli Selection:	Ampicillin (100 ug/mL)
ORF Nucleotide Sequence:	>RG220559 representing NM_020064 Red=Cloning site Blue=ORF Green=Tags(s)

TTTTGTAATACGACTCACTATAGGGCGGCCGGAATTCGTCGACTGGATCCGGTACCGAGGAGATCTGCC
GCC**CGATCGCC**

ATGGAAGGCTCCAATGGCTTTGGGATCGACTCCATTCTCTCCACCGCGCGGGCAGCCCCGCCCTTCCCA
AGGGGACCCCTTGCTCGGGGACTGCCGTTCCGCCCTGGAGTCCACGCTCAGAGAGCAGCAGCGA
CTGCTCTCGCCAGCCTCTCCAGGAAGGGACTGTTGGAGACGGGGACCCACGGCCTGGCGGGGCATCC
GGCCAGGTTTGGACTCCACCTGCAGCCCGGGCAGCTCTCAGCCCGGGCCAGTCGCGCACCGTCACT
CCTCCTTCTGATCAGGGACATCCTTGCCGACTGCAAACCACTCGCGCCTGTGCACCTACTCTAGCAG
CGGGCAGCCGGCAGCCCTGAGCCTGGGGCCGCTTGCAGCAAGGCCGCGGAGGACTTTAGAGACAAG
CTGGACAAAAGTGGCAGCAACGCCTCATCGGACTCTGAGTATAAAGTGAAGGAGGAGGGCAGCCGAGA
TCTCCAGCTCCAGGGACAGTCCCCCGGTGCGCCTGAAAAAGCCACGCAAGGCGCGCACGGCCTTACCCGA
CCATCAGCTGGCGCAGCTGGAGCGCAGCTTCGAGCGGCAGAACTACCTGAGCGTGCAGGACCGCATGGAG
CTCGCCGCTCGCTCAACCTCACCGACACGCAGGTCAAGACCTGGTACCAGAACCGCAGGACTAAATGGA
AGCGACAGACGGCCGTCGGTTGGAGCTGCTGGCGGAGGCAGGCAATTACTCAGCGCTCCAGCGGATGTT
CCCGTCGCCTTATTTCTACCCGAGAGTCTGGTTTCCAACCTGGACCCCGCGCGGCGCTCTACCTGTAC
CGCGGCCCCAGCGCGCCCGCCTGCTCTCCAGAGACCTCTGGTGCCCGCATCCTCATCCAGGACTCC
AGGGCGCCAGCGAGCCGCCCGCGCTGCCCCCTGGCGGGCTCCTCCACGCGCCGCGCAGCCTCG
G

ACGCGTACGCGGCCGCTCGAG - GFP Tag - GTTTAA



[View online »](#)

Protein Sequence: >RG220559 representing NM_020064
 Red=Cloning site Green=Tags(s)

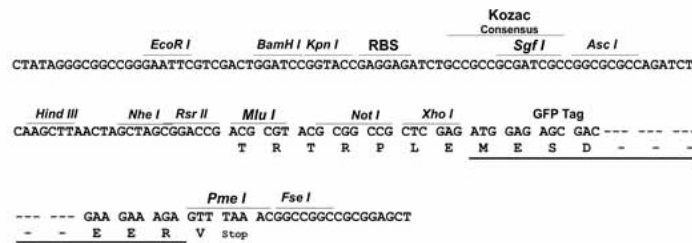
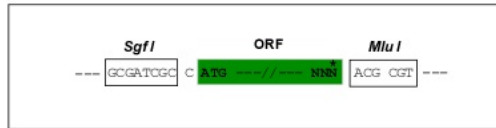
MEGSNGFGIDSILSHRAGSPALPKGDPLLGDRCSPLELSRSESSSDCSSPASPGRDCLETGTTPRPGGAS
 GPGLDHLQPGQLSAPAQSRVTSSFLIRDILADCKPLAACAPYSSSQPAAPEPGGRLAAKAAEDFRDK
 LDKSGSNASSDSEYKVKKEEGDREISSSRDPPVRLKKPRKARTAFDHLQAQLERSFERQKYL SVQDRME
 LAASLNL TDTQVKTWYQNRRTKWKRQTAVGLELLAEAGNYSALQRMFPPSPYFYPQSLVSNLDPGAALYLY
 RGPSAPPPALQRPLVPRILIHGLQGASEPPPLPPLAGVLPRAAQPR

TRTRPLE - GFP Tag - V

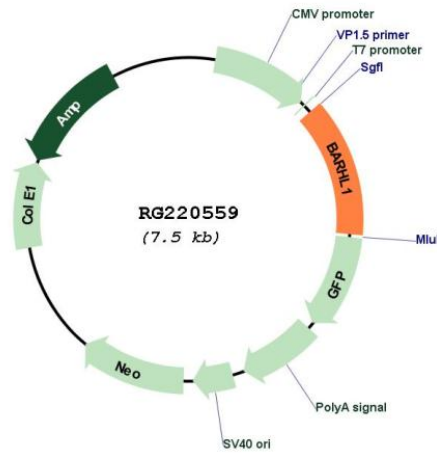
Restriction Sites: SgfI-MluI

Cloning Scheme:

Cloning sites used for ORF Shutting:



Plasmid Map:



ACCN: NM_020064

ORF Size: 981 bp

OTI Disclaimer:	The molecular sequence of this clone aligns with the gene accession number as a point of reference only. However, individual transcript sequences of the same gene can differ through naturally occurring variations (e.g. polymorphisms), each with its own valid existence. This clone is substantially in agreement with the reference, but a complete review of all prevailing variants is recommended prior to use. More info
OTI Annotation:	This clone was engineered to express the complete ORF with an expression tag. Expression varies depending on the nature of the gene.
Components:	The ORF clone is ion-exchange column purified and shipped in a 2D barcoded Matrix tube containing 10ug of transfection-ready, dried plasmid DNA (reconstitute with 100 ul of water).
Reconstitution Method:	<ol style="list-style-type: none">1. Centrifuge at 5,000xg for 5min.2. Carefully open the tube and add 100ul of sterile water to dissolve the DNA.3. Close the tube and incubate for 10 minutes at room temperature.4. Briefly vortex the tube and then do a quick spin (less than 5000xg) to concentrate the liquid at the bottom.5. Store the suspended plasmid at -20°C. The DNA is stable for at least one year from date of shipping when stored at -20°C.
RefSeq:	NM_020064.4
RefSeq Size:	1907 bp
RefSeq ORF:	984 bp
Locus ID:	56751
UniProt ID:	Q9BZE3
Cytogenetics:	9q34.13
Protein Families:	Transcription Factors