

Product datasheet for **RG220548**

Neurotensin Receptor 1 (NTSR1) (NM_002531) Human Tagged ORF Clone

Product data:

| | |
|---------------------------|---|
| Product Type: | Expression Plasmids |
| Product Name: | Neurotensin Receptor 1 (NTSR1) (NM_002531) Human Tagged ORF Clone |
| Tag: | TurboGFP |
| Symbol: | Neurotensin Receptor 1 |
| Synonyms: | NTR |
| Mammalian Cell Selection: | Neomycin |
| Vector: | pCMV6-AC-GFP (PS100010) |
| E. coli Selection: | Ampicillin (100 ug/mL) |
| ORF Nucleotide Sequence: | >RG220548 representing NM_002531 Red=Cloning site Blue=ORF Green=Tags(s) |

TTTTGTAATACGACTCACTATAGGGCGGCCGGAATTCGTCGACTGGATCCGGTACCGAGGAGATCTGCC
GCC**CGATCGCC**

ATGCGCCTCAACAGCTCCGCGCCGGGAACCCGGGCACGCGCCGCGACCCCTTCCAGCGGGCGCAGG
CCGGACTGGAGGAGGCGCTGCTGGCCCCGGCTTCGGCAACGCTTCGGGCAACGCGTCGGAGCGCTCCT
GGCGGCACCCAGCAGCGAGCTGGACGTGAACCCGACATCTACTCAAAGTGTGGTACCGCCGTGTAC
CTGGCGCTTTCGTGGTGGCAGGTTGGCAACACGGTGACGGCGTTCACGCTGGCGCGGAAGAAGTCGC
TGCAGAGCCTGCAGAGCACGGTGCATTACCACCTGGGCAGCCTGGCGCTGTCGACCTGCTACCCTGCT
GCTGGCCATGCCCGTGGAGCTGTACAATTCATCTGGGTGCACCACCCCTGGGCCTTCGGCGACCGCGGC
TGCCGCGGCTACTACTTCTGCGCGACGCTGCACCTACGCCACGGCCCTCAACGTGGCCAGCCTGAGTG
TGGAGCGTACCTGGCCATCTGCCACCCCTTCAAGGCCAAGACCCTCATGTCCCAGGCCGACCAAGAA
GTTTCATCAGCGCCATCTGGCTCGCTCGGCCCTGCTGACGGTGCCTATGCTGTTACCATGGGCGAGCAG
AACCGCAGCGCCGACGGCCAGCACGCGCGGCCCTGGTGTGCACCCCAACATCCACACTGCCACCGTCA
AGGTCGTCATACAGGTCAACACCTTCATGTCCTCATATCCCCATGGTGGTTCATCTCGGTCCTGAACAC
CATCATCGCCAACAAGCTGACCGTCATGGTACGCCAGGCGGCCGAGCAGGGCCAAGTGTGCACGGTCGGG
GGCGAGCACAGCATTACAGCATGGCCATCGAGCCTGGCAGGGTCCAGGCCCTGCGGCACGGCGTGGCGG
TCCTACGTGCAGTGGTTCATCGCCTTTGGTCTGCTGGCTGCCCTACCAGTGGCGGCCTCATGTTCTG
CTACATCTCGGATGAGCAGTGGACTCCGTTCTCTATGACTTCTACCCTACTTCTACATGGTGACCAAC
GCACTTCTACGTCAGCTCCACCATCAACCCATCCTGTACAACCTCGTCTGCAACTTCCGCCACA
TCTTCTGGCCACTGGCCTGCCTCTGCCCGGTGGCGGCGCAGGAGGAAGAGGCCAGCCTTCTCGAG
GAAGGCCGACAGCGTGTCCAGCAACACACCCCTCTCCAGCAATGCCACCCGCGAGACGCTGTAC

AGCGGACCGACGCGTACGCGGCCGCTCGAG - GFP Tag - GTTTAA



[View online »](#)

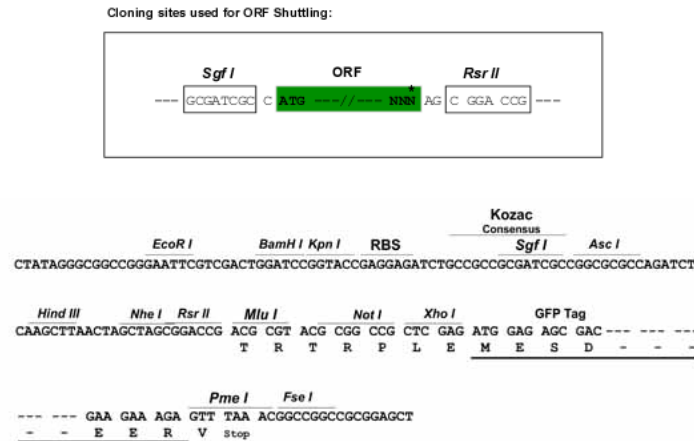
Protein Sequence: >RG220548 representing NM_002531
 Red=Cloning site Green=Tags(s)

MRLNSSAPGTPGTPAADPFQRAQAGLEEALLAPGFGNASGNASERVLAAPSELDVNTDIYSKVLVTAVY
 LALFVVGTVGNTVTAFTLARKKSLQSLQSTVHYHLGSLALSDLLLLLAMPVELYNFIWVHPWAFGDAG
 CRGYFFLRDACTYATALNVASLSVERYLAICHPPKAKTLMRSRRTKKFISAIWLASALLTVPMLFTMGEQ
 NRSADGQHAGGLVCTPTIHTATVKVVIQVNTFMSFIFPMVVISVLNTIIANKLTMVVRQAAEQGQVCTVG
 GEHSTFSMAIEPGRVQALRHGVRVLRVAVIAFVVCWLPYHVRRMLFCYISDEQWTPFLYDFYHYFYMVTN
 ALFYVSSTINPILYNLVSANFRHIFLATLACLCPWRRRRKRPAFSRKADSVSSNHTLSSNATRETLY

SGPTRRRLE - GFP Tag - V

Restriction Sites: SgfI-RsrII

Cloning Scheme:



ACCN: NM_002531

ORF Size: 1254 bp

OTI Disclaimer: The molecular sequence of this clone aligns with the gene accession number as a point of reference only. However, individual transcript sequences of the same gene can differ through naturally occurring variations (e.g. polymorphisms), each with its own valid existence. This clone is substantially in agreement with the reference, but a complete review of all prevailing variants is recommended prior to use. [More info](#)

OTI Annotation: This clone was engineered to express the complete ORF with an expression tag. Expression varies depending on the nature of the gene.

Components: The ORF clone is ion-exchange column purified and shipped in a 2D barcoded Matrix tube containing 10ug of transfection-ready, dried plasmid DNA (reconstitute with 100 ul of water).

Reconstitution Method:

1. Centrifuge at 5,000xg for 5min.
2. Carefully open the tube and add 100ul of sterile water to dissolve the DNA.
3. Close the tube and incubate for 10 minutes at room temperature.
4. Briefly vortex the tube and then do a quick spin (less than 5000xg) to concentrate the liquid at the bottom.
5. Store the suspended plasmid at -20°C. The DNA is stable for at least one year from date of shipping when stored at -20°C.

RefSeq: [NM_002531.1](#), [NP_002522.1](#)

RefSeq Size: 4131 bp

RefSeq ORF: 1257 bp

Locus ID: 4923

UniProt ID: [P30989](#)

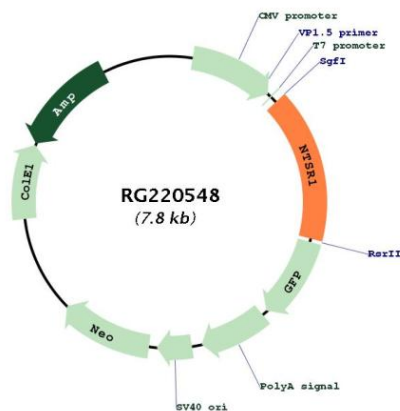
Cytogenetics: 20q13.33

Protein Families: Druggable Genome, GPCR, Transmembrane

Protein Pathways: Calcium signaling pathway, Neuroactive ligand-receptor interaction

Gene Summary: Neurotensin receptor 1 belongs to the large superfamily of G-protein coupled receptors. NTSR1 mediates the multiple functions of neurotensin, such as hypotension, hyperglycemia, hypothermia, antinociception, and regulation of intestinal motility and secretion. [provided by RefSeq, Jul 2008]

Product images:



Circular map for RG220548