

Product datasheet for **RG220536**

TLE4 (NM_007005) Human Tagged ORF Clone

Product data:

Product Type:	Expression Plasmids
Product Name:	TLE4 (NM_007005) Human Tagged ORF Clone
Tag:	TurboGFP
Symbol:	TLE4
Synonyms:	BCE-1; BCE1; E(spl); E(spl); ESG; ESG4; Grg-4; GRG4
Mammalian Cell Selection:	Neomycin
Vector:	pCMV6-AC-GFP (PS100010)
E. coli Selection:	Ampicillin (100 ug/mL)



[View online »](#)

ORF Nucleotide
Sequence:

>RG220536 representing NM_007005
Red=Cloning site Blue=ORF Green=Tags(s)

TTTTGTAATACGACTCACTATAGGGCGGCCGGAATTCGTCGACTGGATCCGGTACCGAGGAGATCTGCC
GCCGCGATCGCC

ATGATTTCGCGACCTGAGCAAGATGTACCCGACAGACACCCGGCACCGCATCAGCCTGCTCAACCCCT
TTAAATTTACAATTTCCGAATCCTGTGATCGGATTAAGGAAGAGTTTCAGTTTTTACAGGCTCAATACCA
CAGTCTGAAGCTGGAATGTGAGAACTCGCCAGTGAGAAGACAGAGATGCAGCGCATTATGTCATGTAT
TATGAAATGTCCTATGGGTTGAATATAGAAATGCACAAGCAGGCAGAGATTGTCAAGAGGCTGAATGCTA
TCTGTGCACAAGTCATTCTTTCTGTCCCAAGAGCACCAGCAACAAGTGGTGCAGGCTGTGGAACGGGC
CAAGCAGGTGACCATGGCAGAATGAACGCCATCATTGGGCAACAACCCAGGCCAGCATTTATCACAT
GGACATGGTCTCCCCGTACCTCTGACTCCACACCCTTCAGGGCTCCAGCCCCCTGCCATTCCACCCATCG
GTAGCAGTGCCGGGCTTCTGGCCCTCTCCAGTGTCTAGGAGTCAAGTCCATCTTCCAATTAAGATGA
GAAGAAGCACCATGACAATGATACCAAAGAGACAGAGACTCCATCAAGAGCTCTTCAGTATCCCCATCA
GCCAGTTTCCGAGGTGCTGAGAAGCACAGAAATCCGCAGACTACTCCTCAGAGAGCAAAAAGCAGAAAA
CTGAAGAAAAGGAAATTGCAGCTCGTTATGACAGCGATGGTGAGAAAAGTGATGACAACCTTGGTGGTTGA
CGTTTTCCAATGAGGATCCATCTTCCCCTCGAGGGAGCCAGCACATTCCCCAGAGAGAATGGCCTAGAC
AAGACACGCCTGCTCAAGAAAGATGCCCGATTAGTCCAGCCTCTATTGCATCTTCCAGCAGTACTCCCT
CCTCCAATCAAAGAATTAGCCTTAATGAAAAATCTACTACTCCCGTCTCAAAGTCCAATACCCCTAC
TCCACGAACTGATGCGCCACCCAGGCAGTAACTCTACTCCCGATTGAGGCCTGTACCTGGAAAAACCA
CCAGGAGTTGACCCTTTGGCCTCAAGCCTAAGGACCCCAATGGCAGTACCTTGTCCATATCCAACCTCC
TTGGGATTGTGCCCATGCTGGAATGAACGGAGAGCTGACCAGCCCCGGAGCGGCCTACGCTGGGCTCCA
CAACATCTCCCCTCAGATGAGCGCAGTGTGCGCCGCGCTGCTGCTGCTGCCTATGGGAGATACCA
GTGGTGGGATTTGATCCACACCATCACATGCGTGTGCCAGCAATACCTCCAAACCTGACAGGCATTTCCAG
GAGGAAAACCAGCATACTCCTTCCATGTTAGCGCAGATGGTCAGATGCAGCCTGTCCCTTTTCCACCCGA
CGCCCTCATCGGACCTGGAATCCCCGGCATGCTCGCCAGATCAACACCCTCAACCACGGGGAGGTGGTG
TGCGCGGTGACCATCAGCAACCCACGAGACACGTGTACACGGGTGGGAAGGGCTGCGTCAAGGTCTGGG
ACATCAGCCACCCAGGCAATAAGAGTCTGTCTCCAGCTCGACTGTCTGAACAGGGATAACTACATCCG
TTCCTGCAGATTGCTCCCTGATGGTCGCACCCTAATTGTTGGAGGGGAAGCCAGTACTTTGTCCATTTGG
GACCTGGCGGCTCCAACCCACGCATCAAGGCAGAGCTGACATCCTCGGCCCCCGCTGCTATGCCCTGG
CCATCAGCCCCGATTCCAAGGTCTGCTTCTCATGCTGCAGCGACGCAACATCGCTGTGTGGGATCTGCA
CAACCAGACCTTGGTGAAGCAATTCCAGGGCCACACAGATGGAGCCAGCTGTATTGACATTTCTAATGAT
GGCACCAAGCTCTGGACAGGTGGTTTGGACAACACGGTCAGGTCTGGGACCTGCGCGAGGGGGCGGCAGC
TGCAGCAGCAGACTTACCTCCAGATCTTTTCTCTGGGCTACTGCCCAACTGGAGAGTGGCTTGCAGT
GGGGATGGAGAACAGCAATGTGGAAGTTTTGCATGTCACCAAGCCAGACAAATACCAACTACATCTTCAT
GAGAGCTGTGTGCTGTGCTCAAGTTTGGCCATTGTGGCAATGGTTTGTAAAGCACTGGAAGGACAACC
TTCTGAATGCCTGGAGAACACCTTATGGGGCCAGTATATCCAGTCCAAAGAATCCTCATCGGTGCTTAG
CTGTGACATCTCCGTGGACGACAAATACATTGTCACTGGCTCTGGGGATAAGAAGGCCACAGTTTATGAA
GTTATTTAT

ACGCGTACGCGGCCGCTCGAG - GFP Tag - GTTTAA

Protein Sequence: >RG220536 representing NM_007005
 Red=Cloning site Green=Tags(s)

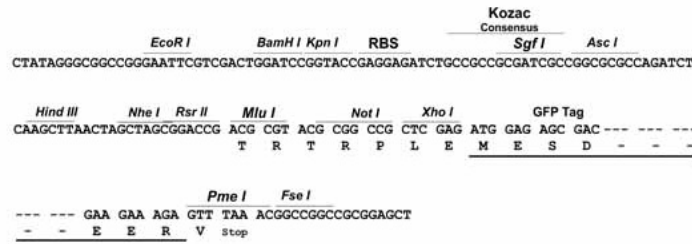
MIRDL SKMYPQTRHPAPHQPAQPFKFTISESCDRIKEEFQFLQAQYHSLKLECEKLAASEKTEMQRHYVMY
 YEMSYGLNIEMHKQAEIVKRLNAICAQVIPFLSQEHQQVVQAVERAKQVTMAELNAIGQQLQAQHLSH
 GHGLPVPLTPHPSGLQPPAIPPIGSSAGLLALSSALGGQSHLPKDEKHHNDHQRDRDSIKSSSVSPS
 ASFRGAEKHRNSADYSSSESKKQKTEEKEIAARYDSGEEKSDDNLVVDVSNEDPSSPRGSPAHSPRENGLD
 KTRLLKKDAPISPASIASSSTPSSKSKELSLNEKSTTPVSKSNTPTPRTDAPTPGSNSTPGLRPVPGKP
 PGVDPLASSLRTPMAVPCPYPTPFGI VPHAGMNGEL TSPGAAYAGLHNI SPQMSAAAAAAAAAAYGRSP
 VVGFDPHHMRVPAIPP NLTGIPGGKPAYSFHVSADGQM QPVPFPD DALIGPGIPRHARQINTLNHGEVV
 CAVTISNPTRHVYTGGKGCVKVWDISHPGNKSPVSQLDCLNRDNYIRSCRLLPDGR TLIVGGEASTLSIW
 DLAAPT PRIKAELTSSAPACYALAI SPDSKVCFCSCSDGNI AVWDLHNQTLVRQFQGHTDGASCIDISND
 GTKLWTGGLDNTVRSWDLREGRQLQQHDFTSQIFSLGYCPTGEWLAVGMENSNVEVLHVTKPKDYQLHLH
 ESCVLSLKFAHCGKWFVSTGKDNLLNAWRTPYGASIFQSKESSSVLSCDISVDDKYIVTSGDGKKATVYE
 VIY

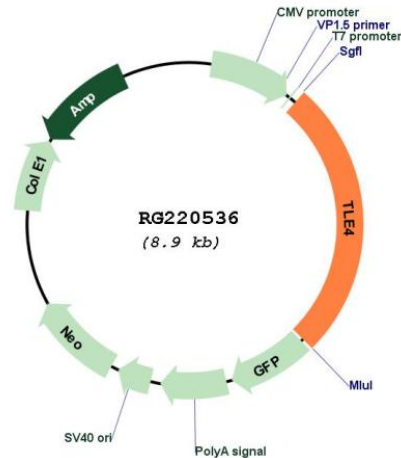
TRTRPLE - GFP Tag - V

Restriction Sites: SgfI-MluI

Cloning Scheme:

Cloning sites used for ORF Shuttling:



Plasmid Map:


ACCN: NM_007005

ORF Size: 2319 bp

OTI Disclaimer: The molecular sequence of this clone aligns with the gene accession number as a point of reference only. However, individual transcript sequences of the same gene can differ through naturally occurring variations (e.g. polymorphisms), each with its own valid existence. This clone is substantially in agreement with the reference, but a complete review of all prevailing variants is recommended prior to use. [More info](#)

OTI Annotation: This clone was engineered to express the complete ORF with an expression tag. Expression varies depending on the nature of the gene.

Components: The ORF clone is ion-exchange column purified and shipped in a 2D barcoded Matrix tube containing 10ug of transfection-ready, dried plasmid DNA (reconstitute with 100 ul of water).

Reconstitution Method:

1. Centrifuge at 5,000xg for 5min.
2. Carefully open the tube and add 100ul of sterile water to dissolve the DNA.
3. Close the tube and incubate for 10 minutes at room temperature.
4. Briefly vortex the tube and then do a quick spin (less than 5000xg) to concentrate the liquid at the bottom.
5. Store the suspended plasmid at -20°C. The DNA is stable for at least one year from date of shipping when stored at -20°C.

RefSeq: [NM_007005.5](#)

RefSeq Size: 4749 bp

RefSeq ORF: 2322 bp

Locus ID: 7091

UniProt ID: [Q04727](#)

Cytogenetics: 9q21.31

Protein Families: Transcription Factors

Gene Summary: Transcriptional corepressor that binds to a number of transcription factors. Inhibits the transcriptional activation mediated by PAX5, and by CTNNB1 and TCF family members in Wnt signaling. The effects of full-length TLE family members may be modulated by association with dominant-negative AES. Essential for the transcriptional repressor activity of SIX3 during retina and lens development and for SIX3 transcriptional auto-repression (By similarity). [UniProtKB/Swiss-Prot Function]