

## Product datasheet for **RG220531**

### **CASK (NM\_003688) Human Tagged ORF Clone**

#### **Product data:**

Product Type:	Expression Plasmids
Product Name:	CASK (NM_003688) Human Tagged ORF Clone
Tag:	TurboGFP
Symbol:	CASK
Synonyms:	CAGH39; CAMGUK; CMG; FGS4; hCASK; LIN2; MICPCH; MRXSNA; TNRC8
Mammalian Cell Selection:	Neomycin
Vector:	pCMV6-AC-GFP (PS100010)
E. coli Selection:	Ampicillin (100 ug/mL)



[View online »](#)

**ORF Nucleotide Sequence:**

>RG220531 representing NM\_003688  
 Red=Cloning site Blue=ORF Green=Tags(s)

TTTTGTAATACGACTCACTATAGGGCGGCCGGAATTCGTGCGACTGGATCCGGTACCGAGGAGATCTGCC  
 GCC**CGGATCGCC**

ATGGCCGACGACGACGTGCTGTTCGAGGATGTGTACGAGCTGTGCGAGGTGATCGGAAAGGGTCCCTTCA  
 GTGTTGTACGACGATGTATCAACAGAGAACTGGGCAACAATTTGCTGTAAAAATTTGTTGATGTAGCCAA  
 GTTCACATCAAGTCCAGGTTAAGTACAGAAGATCTAAAGCGGGAAGCCAGTATCTGTATATGCTGAAA  
 CATCCACACATTGTAGAGTTATTGGAGACATATAGCTCAGATGGAATGCTTTACATGGTTTTCGAATTTA  
 TGGATGGAGCAGATCTGTGTTTTGAAATCGTAAAGCGAGCTGACGCTGGTTTTGTGTACAGTGAAGCTGT  
 AGCCAGCCATTATATGAGACAGATACTGGAAGCTCTACGCTACTGCCATGATAATAACATAATTCACAGG  
 GATGTGAAGCCCCACTGTGTTCTCCTTGCCTCAAAGAAAACCTCGGCACCTGTTAACTTGGAGGCTTTG  
 GGGTAGCTATTCAATTAGGGGAGTCTGGACTTGTAGCTGGAGGACGTGTTGGAACACCTCATTTTATGGC  
 ACCAGAAGTGGTCAAAGAGAGCCTTACGGAAGCCTGTAGACGCTGGGGGTGCGGTGTGATCCTTTTT  
 ATCCTGCTCAGTGGTTGTTTGCCTTTTTACGGAACCAAGGAAAGATTGTTTGAAGGCATTATTAAGGAA  
 AATATAAGATGAATCCAAGGCAGTGGAGCCATATCTCTGAAAGTGCCAAAGACCTAGTACGTCGCATGCT  
 GATGCTGGATCCAGCTGAAAGGATCACTGTTTATGAAGCACTGAATCACCCATGGCTTAAGGAGCGGGAT  
 CGTTACGCCTACAAGATTCATCTCCAGAAACAGTAGAGCAGCTGAGGAAATTCATGCAAGGAGGAAAC  
 TAAAGGGTGCAGTACTAGCCGCTGTGTCAAGTCAAAAATCAACTCATTCTATGGGGATCCCCCTGAAGA  
 GTTACCAGATTTCTCCGAAGACCCTACCTCCTCAGGAGCAGTCTCACAGGTGCTGGACAGCCTGGAAGAG  
 ATTCATGCGCTTACAGACTGCAGTGAAGGACCTAGATTTTCTACACAGTGTTCAGGATCAGCATG  
 TTCACACTACTAGATCTGTATGACAAAATTAACACAAAAGCTTCACCACAAAACAGAAATCTCCAAG  
 CGATGCAGTACAGAGAGCCAAAGAGGTATTGGAAGAAATTTTCATGTTACCCTGAGAATAACGACGCAAAG  
 GAACTAAAGCGTATTTTAAACACAACCTCATTTTCATGGCCTTACTTCAGACTCACGACGTAGTGGCAGATG  
 AAGTTTACAGTGTGAAGCATTGAGGGTACACCTCCTCCACCTCTCCCTATTTAAACGGCGATTCTCC  
 AGAAAGTGCTAACGGAGACATGGATATGGAGAATGTGACCAGAGTTCGGCTGGTACAGTTTCAAAGAAC  
 ACAGATGAACCAATGGGAATCACTTTAAAAATGAATGAACTAAATCATTGTATTGTTGCAAGAAATATGC  
 ATGGGGGCATGATTCACAGGCAAGGTACACTTCATGTTGGTGTGAAATTCGAGAAATCAATGGCATCAG  
 TGTGGCTAACCAAACAGTGAACAACCTGCAAAAAATGCTTAGGGAAATGCGGGGGAGTATTACCTTCAAG  
 ATTTGTCCAAGTTACCGCACTCAGTCTTCTGCTGTGAGGACTTGCCATCAACTACCAACCAAAAGGAC  
 GACAGATCTATGTAAAGAGCAAAATTTGAATATGATCCAGCCAAGGATGACCTCATCCCCTGTAAAGAAGC  
 TGGCATTTCGATTGAGTGGTGCATCATCCAGATTATTAGTAAGGATGATCATAATTGGTGGCAGGGT  
 AAAGTGGAAAACCTCAAAAATGGAAGTGCAGGTCTCATTCTCTCTGAACTTCAGGAATGGCGAGTAG  
 CTTGCAATTGCCATGGAGAAGACCAAAACAGGAGCAGCAGGCCAGCTGTACTTGGTTTGGCAAGAAAAAGAA  
 GCAGTACAAGATAAAATTTGGCAAAGCACAATGCAGTGTGTTGATCAATTAGATCTTGTACATATGAA  
 GAAGTAGTAAAACCTGCCAGCATTCAAGAGGAAAACACTAGTCTTATTAGGCGCACATGGTGTGGGAGAA  
 GACACATAAAAAACACTCTCATCACAAGCACCAGACCGGTTTGCCTACCCTATTCCACATAACAACAG  
 ACCTCAAAGAAAGACGAAGAAAATGGAAGAATTATTACTTTGTATCTCATGACCAAAATGATGCAAGAC  
 ATCTCTAATAACGAGTACTTGGAGTACGGCAGCCACGAGGATGCGATGTATGGGACAAAACCTGGAGACCA  
 TCCGGAAGATCCACGAGCAGGGGCTGATTGCAATACTGGACGTGGAGCCTCAGGCACTGAAGGCTCTGAG  
 AACTGCAGAGTTTCTCCTTTTGTGTTTTTCAATTGCTGCACCAACTATTACTCCAGGTTTAAATGAGGAT  
 GAATCTCTCAGCGTCTGCAGAAGGAGTCTGACATCTTACAGAGAACATATGCACACTACTTCGATCTCA  
 CAATTATCAACAATGAAATTTGATGAGACAATCAGACATCTGGAGGAAGCTGTTGAGCTCGTGTGCACAGC  
 CCCACAGTGGTCCCTGTCTCCTGGTCTAT

**ACGCGTACGCGGCCGCTCGAG** - GFP Tag - GTTTAA

**Protein Sequence:** >RG220531 representing NM\_003688  
 Red=Cloning site Green=Tags(s)

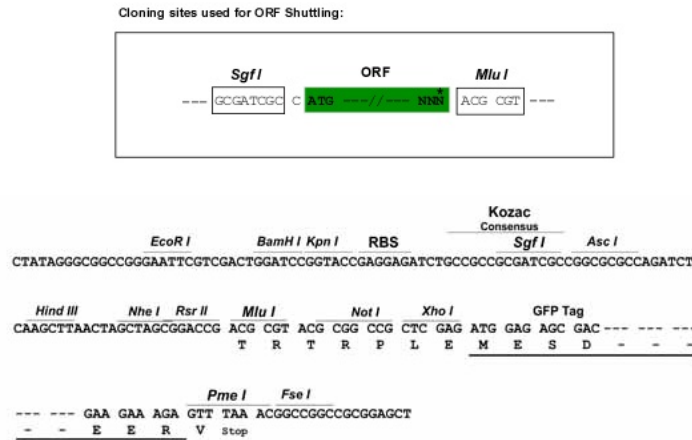
MADDDVLFEDVYELCEVIGKGPFSVVRRCINRETGQQFAVKIVDVAKFTSSPGLSTEDLKREASICHMLK  
 HPHIVELLEITYSSDGMLYMFVFEFMDGADLCFEIVKRADAGFVYSEAVASHYMRQILEALRYCHDNNIIHR  
 DVKPHCVLLASKENSAPVKLGGFGVAIQLGESGLVAGGRVGTPHFMAPEVVKREPYGKPVVDVWGGCVILF  
 ILLSGCLPFYGTKERLFEIGIIGKYKMNPRQWSHISESAKDLVRRMLMLDPAERITVYVEALNHPWLKERD  
 RYAYKIHLPETVEQLRKFNARRKLGAVLA AVSSHKFNSFYGDPPPEELPDFSEDPTSSGAVSQVLDLLEE  
 IHALTDCSEKDLDFLHSVFQDQHLHTLLDLYDKINTKSSPQIRNPPSDAVQRAKEVLEEISCPENNDK  
 ELKRILTQPHFMALLQTHDVVAHEVYSDEALRVTPPTSPYLNQD SPESANGDMDMENVTRVRLVQFQKN  
 TDEPMGITLKMNELNHCIVARIMHGGMIHRQGT LHVGD EIREINGISVANQTVEQLQKMLREMRGSITFK  
 IVPSYRTQSSCEDLPSTTQPKGRQIYVRAQFEYDPAKDDLIPCKEAGIRFRVGDIIQIISKDDHNWWQG  
 KLENSKNGTAGLIPSELQEWVACIAMKTKQEQQASCTWFGKKKKQYKDKYLAKHNAVFDQLDLVTEY  
 EVVKLPAFKRRTLVLGAGVGRRHKNTLITKHPDRFAYPIPHTRPPKKDEENGNYYFVSHDQMMQD  
 ISNNEYLEYGSHEDAMYGKLETIRKIHQGLIAILDVEPQALKVLR TAEFAPFVVFIAAPTITPGLNED  
 ESLQRLQKESDILQRTYAHYFDLTIINNEIDETIRHLEEAVELVCTAPQWVPVSWVY

TRTRPLE - GFP Tag - V

**Restriction Sites:**

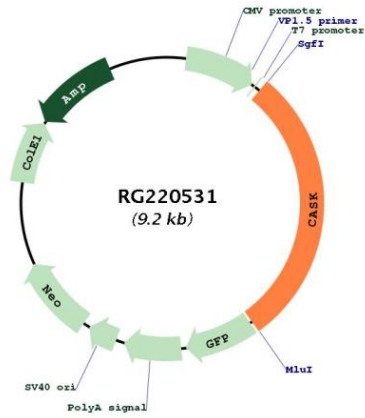
Sgfl-MluI

**Cloning Scheme:**



<b>ACCN:</b>	NM_003688
<b>ORF Size:</b>	2691 bp
<b>OTI Disclaimer:</b>	The molecular sequence of this clone aligns with the gene accession number as a point of reference only. However, individual transcript sequences of the same gene can differ through naturally occurring variations (e.g. polymorphisms), each with its own valid existence. This clone is substantially in agreement with the reference, but a complete review of all prevailing variants is recommended prior to use. <a href="#">More info</a>
<b>OTI Annotation:</b>	This clone was engineered to express the complete ORF with an expression tag. Expression varies depending on the nature of the gene.
<b>Components:</b>	The ORF clone is ion-exchange column purified and shipped in a 2D barcoded Matrix tube containing 10ug of transfection-ready, dried plasmid DNA (reconstitute with 100 ul of water).
<b>Reconstitution Method:</b>	<ol style="list-style-type: none"><li>1. Centrifuge at 5,000xg for 5min.</li><li>2. Carefully open the tube and add 100ul of sterile water to dissolve the DNA.</li><li>3. Close the tube and incubate for 10 minutes at room temperature.</li><li>4. Briefly vortex the tube and then do a quick spin (less than 5000xg) to concentrate the liquid at the bottom.</li><li>5. Store the suspended plasmid at -20°C. The DNA is stable for at least one year from date of shipping when stored at -20°C.</li></ol>
<b>RefSeq:</b>	<a href="#">NM_003688.1</a> , <a href="#">NP_003679.1</a>
<b>RefSeq Size:</b>	3122 bp
<b>RefSeq ORF:</b>	2766 bp
<b>Locus ID:</b>	8573
<b>UniProt ID:</b>	<a href="#">O14936</a>
<b>Cytogenetics:</b>	Xp11.4
<b>Domains:</b>	pkinese, TyrKc, SH3, PDZ, S_TKc, L27, Guanylate_kin, GuKc
<b>Protein Families:</b>	Druggable Genome, Protein Kinase
<b>Protein Pathways:</b>	Tight junction
<b>Gene Summary:</b>	This gene encodes a calcium/calmodulin-dependent serine protein kinase. The encoded protein is a MAGUK (membrane-associated guanylate kinase) protein family member. These proteins are scaffold proteins and the encoded protein is located at synapses in the brain. Mutations in this gene are associated with FG syndrome 4, intellectual disability and microcephaly with pontine and cerebellar hypoplasia, and a form of X-linked intellectual disability. Multiple transcript variants encoding different isoforms have been found for this gene. [provided by RefSeq, Jul 2017]

Product images:



Circular map for RG220531