

Product datasheet for **RG220505**

Integrin Linked Kinase (ILK) (NM_001014795) Human Tagged ORF Clone

Product data:

Product Type:	Expression Plasmids
Product Name:	Integrin Linked Kinase (ILK) (NM_001014795) Human Tagged ORF Clone
Tag:	TurboGFP
Symbol:	ILK
Synonyms:	HEL-S-28; ILK-1; ILK-2; P59; p59ILK
Mammalian Cell Selection:	Neomycin
Vector:	pCMV6-AC-GFP (PS100010)
E. coli Selection:	Ampicillin (100 ug/mL)



[View online »](#)

ORF Nucleotide Sequence:

>RG220505 representing NM_001014795
 Red=Cloning site Blue=ORF Green=Tags(s)

TTTTGTAATACGACTCACTATAGGGCGGCCGGAATTCGTCGACTGGATCCGGTACCGAGGAGATCTGCC
 GCCGCGATCGCC

ATGGACGACATTTTCACTCAGTGCCGGGAGGGCAACGAGTCGCCGTTTCGCTGTGGCTGGACAACACGG
 AGAACGACCTCAACCAGGGGACGATCATGGCTTCTCCCTTGCCTGGCCTGCCGAGAGGGCCGCTC
 TGCTGTGGTTGAGATGTTGATCATGCGGGGGCACGGATCAATGTAATGAACCGTGGGGATGACACCCCC
 CTGCATCTGGCAGCCAGTCATGGACACCGTGATATTGTACAGAAGCTATTGCAGTACAAGGCAGACATCA
 ATGCAGTGAATGAACACGGGAATGTGCCCTGCACTATGCCTGTTTTGGGGCCAAGATCAAGTGGCAGA
 GGACCTGGTGGCAAAATGGGGCCCTTGTGAGCATCTGTAACAAGTATGGAGAGATGCCTGTGGACAAAGCC
 AAGGCACCCCTGAGAGAGCTTCCGAGAGCGGGCAGAGAAGTGGCCAGAATCTCAACCGTATCCAT
 ACAAGGACACATTCTGGAAGGGGACCACCCGCACTCGGCCCGAAATGGAACCTGAACAAACACTCTGG
 CATTGACTTCAAACAGCTTAACTTCTGACGAAGCTCAACGAGAATCACTCTGGAGAGCTATGGAAGGGC
 CGCTGGCAGGGCAATGACATTGTCGTGAAGGTGCTGAAGGTTTCGAGACTGGAGTACAAGGAAGAGCAGGG
 ACTTCAATGAAGAGTGTCCCGGCTCAGGATTTCTCGCATCAAATGTGCTCCCAAGTGTAGGTGCTG
 CAGTCTCCACCTGCTCCTCATCTACTCTCATCACACTGGATGCCGTATGGATCCCTCTACAATGTA
 CTACATGAAGGCACCAATTTTCGTCGTGGACCAGAGCCAGGCTGTGAAGTTTGCTTTGGACATGGCAAGGG
 GCATGGCCTTCTACACACACTAGAGCCCTCATCCCACGACATGCACCTCAATAGCCGTAGTGTAAATGAT
 TGATGAGGACATGACTGCCCGAATTAGCATGGCTGATGTCAAGTTCTCTTTCAAATGTCTGGTTCGATG
 TATGCACCTGCCTGGGTAGCCCCGAAGCTCTGCAGAAGAAGCCTGAAGACACAAACAGACGCTCAGCAG
 ACATGTGGAGTTTTGCAGTGCTTCTGTGGGAAGTGGTACACGGGAGGTACCCCTTGTGACCTCTCCAA
 TATGGAGATTGGAATGAAGGTGGCATTGGAAGGCCTTCGGCCTACCATCCACCAGGTATTTCCCTCAT
 GTGTGAAGCTCATGAAGATCTGCATGAATGAAGACCCTGCAAAGCGACCCAAATTTGACATGATTGTGC
 CTATCCTTGAGAAGATGCAGGACAAG

ACGCGTACGCGGCCGCTCGAG - GFP Tag - GTTTAA

Protein Sequence:

>RG220505 representing NM_001014795
 Red=Cloning site Green=Tags(s)

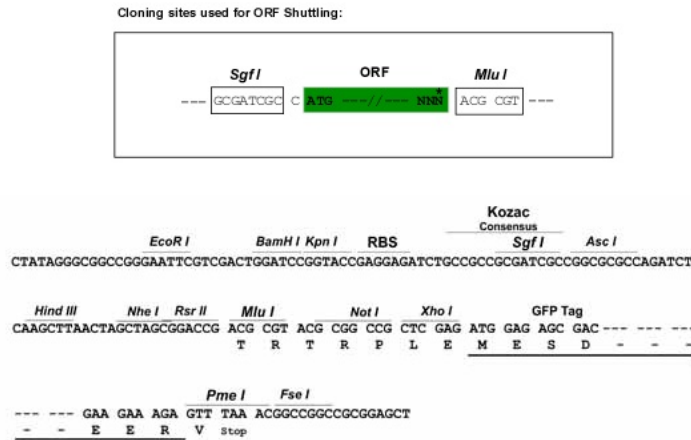
MDDIFTQCREGNAVAVRLWLDNTENDLNQGDHGFSPHWAACREGRSAVVEMLIMRGARINVMNRGDDTP
 LHLAASHGHRDIVQKLLQYKADINAVNEHGNVPLHYACFWGDQVAEDLVANGALVSI CNKYGEMPVDKA
 KAPLRELLRERAEKMGQNLNRIPIYKDTFWKGTTRTRPRNGTLNKHSGIDFKQLNFLTCLNENHSGELWKG
 RWQGNDIVVKVLKVRDWSTRKSRDFNEECPRLRIFSHPNVLPVLGACQSPAPHPPTLITHWMPYGSLYNV
 LHEGTNFVVDQSQAVKFAALDMARGMAFLHTLEPLIPRHALNSRSMIDEDMTARISMADVKFSFQCPGRM
 YAPAWVAPEALQKKPEDTNRNSADMWSFAVLLWELVTREVPFADLSNMEIGMKVALEGLRPTIPPGISPH
 VCKLMKICMNEDPAKRPKFDMIVPILEKMQDK

TRTRPLE - GFP Tag - V

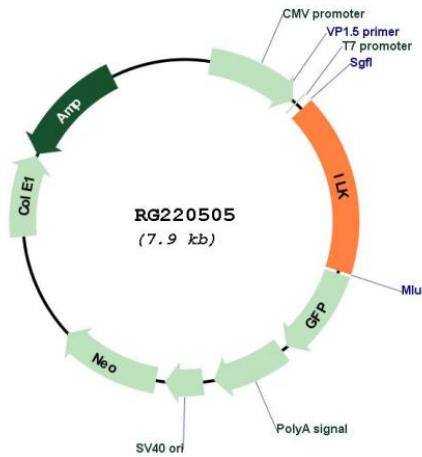
Restriction Sites:

SgfI-MluI

Cloning Scheme:



Plasmid Map:



ACCN:

NM_001014795

ORF Size:

1356 bp

OTI Disclaimer:

The molecular sequence of this clone aligns with the gene accession number as a point of reference only. However, individual transcript sequences of the same gene can differ through naturally occurring variations (e.g. polymorphisms), each with its own valid existence. This clone is substantially in agreement with the reference, but a complete review of all prevailing variants is recommended prior to use. [More info](#)

OTI Annotation:

This clone was engineered to express the complete ORF with an expression tag. Expression varies depending on the nature of the gene.

Components:	The ORF clone is ion-exchange column purified and shipped in a 2D barcoded Matrix tube containing 10ug of transfection-ready, dried plasmid DNA (reconstitute with 100 ul of water).
Reconstitution Method:	<ol style="list-style-type: none">1. Centrifuge at 5,000xg for 5min.2. Carefully open the tube and add 100ul of sterile water to dissolve the DNA.3. Close the tube and incubate for 10 minutes at room temperature.4. Briefly vortex the tube and then do a quick spin (less than 5000xg) to concentrate the liquid at the bottom.5. Store the suspended plasmid at -20°C. The DNA is stable for at least one year from date of shipping when stored at -20°C.
RefSeq:	NM_001014795.3
RefSeq Size:	1931 bp
RefSeq ORF:	1359 bp
Locus ID:	3611
UniProt ID:	Q13418
Cytogenetics:	11p15.4
Protein Families:	Druggable Genome, Protein Kinase
Protein Pathways:	Endometrial cancer, Focal adhesion, PPAR signaling pathway
Gene Summary:	This gene encodes a protein with a kinase-like domain and four ankyrin-like repeats. The encoded protein associates at the cell membrane with the cytoplasmic domain of beta integrins, where it regulates integrin-mediated signal transduction. Activity of this protein is important in the epithelial to mesenchymal transition, and over-expression of this gene is implicated in tumor growth and metastasis. Alternative splicing results in multiple transcript variants. [provided by RefSeq, Jun 2013]