

## Product datasheet for **RG220501**

### Myosin light chain kinase (MYLK) (NM\_053027) Human Tagged ORF Clone

#### Product data:

Product Type:	Expression Plasmids
Product Name:	Myosin light chain kinase (MYLK) (NM_053027) Human Tagged ORF Clone
Tag:	TurboGFP
Symbol:	MYLK
Synonyms:	AAT7; KRP; MLCK; MLCK1; MLCK108; MLCK210; MMIHS; MMIHS1; MSTP083; MYLK1; smMLCK
Mammalian Cell Selection:	Neomycin
Vector:	pCMV6-AC-GFP (PS100010)
E. coli Selection:	Ampicillin (100 ug/mL)
ORF Nucleotide Sequence:	>RG220501 representing NM_053027 Red=Cloning site Blue=ORF Green=Tags(s)

TTTTGTAATACGACTCACTATAGGGCGGCCGGAATTCGTCGACTGGATCCGGTACCGAGGAGATCTGCC  
GCC**CGATCGCC**

ATGGGGGATGTGAAGCTGGTTGCCTCGTCACACATTTCCAAAACCTCCCTCAGTGTGGATCCCTCAAGAG  
TTGACTCCATGCCCTGACAGAGGCCCTGCTTTCATTTTGGCCCTCGGAACCTCTGCATCAAAGAAGG  
AGCCACCGCCAAGTTCGAAGGGCGGGTCCGGGGTTACCCAGAGCCCAGGTGACATGGCACAGAAACGGG  
CAACCCATCACCAGCGGGGGCCGCTTCTGCTGGATTGCGGCATCCGGGGGACTTTCAGCCTTGATT  
ATGCTGTCCATGAGGAGGACAGGGAAAGTATACCTGTGAAGCCACCAATGGCAGTGGTGTCTGCCAGGT  
GACAGTGGAGTTGACAGTAGAAGGAAGTTTTCGAAGCAGCTTGGTCAGCCTGTTGTTTCCAAAACCTTA  
GGGATAGATTTTCAGCTCCAGCAGTGGAGACCCGTCCTAGCATCTGGGGGAGTGCCACCAAAGTTTG  
CTACCAAGCTGGGCCGAGTTGTGGTCAAAGAAGGACAGATGGGACGATTCTCTGCAAGATCACTGGCCG  
GCCCAACCGCAGGTACCTGGCTCAAGGGAAATGTTCCACTGCAGCCGAGTGCCCGTGTGTCTGTGTCT  
GAGAAGAACGGCATGCAGGTTCTGGAAATCCATGGAGTCAACCAAGATGACGTGGGAGTGTACACGTGCC  
TGGTGGTGAACGGGTCGGGGAAGCCTCGATGTCAGTGAACCTTCCATCCAAGTTTGGACAGTGCCAA  
TAGGTCAATTTGTGAGAGAAAACAAAGCCACCAATTCAGATGTCAGGAAAGAGGTGACCAATGTAATCTCA  
AAGGAGTCGAAGCTGGACAGTCTGGAGGCTGCAGCCAAAAGCAAGAACTGCTCCAGCCCCAGAGAGGTG  
GCTCCCCACCCTGGGCTGCAAACAGCCAGCCTCAGCCCCAAGGGAGTCCAAGCTGGAGTCATGCAAGGA  
CTCGCCAGAACGGCCCCGAGACCCCGTCTTCCAGAACTTCCAGCTCCATACCCCTGCAGGCCGCA  
AGAGTTACGCCGAACCAAGAGCACCAGGCTGGGGTCTATCACCTTCTGGAGAAGAGAGGAAGAGGC  
CAGCTCTCCCGTCCAGCCACCTTCCCCACCAGGCAGCCTGGCCTGGGAGCCAAGATGTTGTGAGCAA  
GGCTGCTAACAGGAGAATCCCCATGGAGGGCCAGAGGGATTGAGCATTCCCAAATTTGAGAGCAAGCCC  
CAAAGCCAGGAGGTCAAGGAAAATCAAAGTGTCAAGTTTCAGATGTGAAGTTTCCGGGATTCCAAAGCCTG  
AAGTGGCCTGGTCTCTGGAAGGCACCCCGTGGAGAGACAGGAAGGCAGCATTGAGGTTTATGAAGATGC  
TGCTCCATTACCTCTGCTGTGAAAGCCCGACCAGGACAGTGGGACATACAGCTGCACTGCTTCC



[View online »](#)

AACGCCCAAGGCCAGCTGTCTGTAGCTGGACCCTCCAAGTGAAAGGCTTGCCGTGATGGAGGTGGCCC  
 CCTCCTTCTCCAGTGTCTGAAGGACTGCGCTGTTATTGAGGGCCAGGATTTTGTGCTGCAGTGTCCGT  
 ACGGGGACCCAGTGCCTCCGATCACTTGGCTGCTGAATGGGCAGCCATCCAGTACGCTCGCTCCACC  
 TGCGAGGCCGGCTGGCTGAGCTCCACATCCAGGATGCCCTGCCGGAGGACCATGGCACCTACACCTGCC  
 TAGCTGAGAAATGCCTTGGGGCAGGTGCTCTGCAGCGCTGGGTACCCTCCATGAAAAGAAGAGTAGCAG  
 GAAGAGTGAGTACCTTCTGCCTGTGGCTCCCAGCAAGCCCACTGCACCCATCTTCTGCAGGGCCTCTCT  
 GATCTCAAAGTCATGGATGGAAGCCAGTCACTATGACTGTCCAAGTGTCAAGGATCCACCCCTGAAG  
 TCATCTGGCTGCACAATGGGAATGAGATCCAAGAGTCAGAGGACTTCCACTTTGAACAGAGAGGAACTCA  
 GCACAGCCTTTGTATCCAGGAAGTGTCCCGGAGGACACGGGCACGTACACCTGCCAGGCTGGAACAGC  
 GCTGGAGAGTCCGCACCCAGGCCGTGCTCACGGTACAAGAGCCTCACGATGGCACCCAGCCCTGGTTCA  
 TCAGTAAGCCTCGCTCAGTGACAGCCTCCCTGGGCCAGAGTGTCTCATCTCCTGCGCCATAGCTGGTGA  
 CCCCTTCTACCGTGCCTGAGTGCAGAGATGGCAAAGCCCTCTGCAAAGACTGGCCACTTCGAGGTG  
 CTTCAGAATGAGGACGTGTTACCCTGGTTCTAAAGAAGTGCAGCCCTGGCATGCCGGCCAGTATGAGA  
 TCCTGCTCAAGAACCAGGTTGGCGAATGCAGTTGCCAGGTGTACTGATGCTACAGAACAGCTCTGCCAG  
 AGCCCTTCCACGGGGAGGGAGCCTGCCAGCTGCGAGGACCTCTGTGGTGGAGGAGTTGGTGTGATGGT  
 GGTGGTAGTGACCGCTATGGGTCCCTGAGGCCTGGCTGGCCAGCAAGAGGGCAGGTTGGCTAGAGGAGG  
 AAGACGGCGAGGACGTGCGAGGGGTGCTGAAGAGGCGCTGGAGACGAGGACACACTGAGGAGGCGAT  
 CCGCCAGCAGGAGGTGGAGCAGCTGGACTTCCGAGACCTCCTGGGGAAGAAGGTGAGTACAAAGACCCTA  
 TCGGAAGACGACCTGAAGGAGATCCCAGCCGAGCAGATGGATTTCCGTGCCAACCTGCAGCGGCAAGTGA  
 AGCCAAAGACTGTGTCTGAGGAAGAGAGAAAGTGCACAGCCCCAGCAGGTGATTTTCGCTCTGTCTCT  
 GGCCAAAGAAGGGACTTCCAAGACCCCGTGCCTGAGAAGGTGCCACCGCCAAAACCTGCCACCCCGGAT  
 TTTCTCAGTGTGGTGGCAAGAAGAAATACCAGCAGAGAATGGCAGCAGCAGTGGCAGAGCCCTGA  
 ATGCCAAGGCAGTGGAGAGTTCCAAGCCCTGAGCAATGCACAGCCTTCAGGGCCTTGAACCCCTGGG  
 CAACGCCAAGCCTGCTGAGACCCTGAAGCCCAATGGGCAAGCCCAAGCCTGCCAGACCCCTGAAGCCCATG  
 GGCAATGCCAAGCCTGATGAGAACCTGAAATCCGCTAGCAAAGAAGAACTCAAGAAGACGTTAAGAATG  
 ATGTGAACTGCAAGAGAGGCCATGCAGGGACCACAGATAATGAAAAGAGATCAGAGAGCCAGGGGACAGC  
 CCCAGCCTTCAAGCAGAAGCTGCAAGATGTTTATGTGGCAGAGGGCAAGAAGCTGCTGCTCCAGTGCCAG  
 GTGTCTTCTGACCCCCAGCCACCATCATCTGGACGCTGAACGGAAAGACCCTCAAGACCACCAAGTTCA  
 TCATCCTCTCCAGGAAGGCTCACTCTGCTCCGTCTCCATCGAGAAGGCACTGCCTGAGGACAGAGGCTT  
 ATACAAGTGTGTAGCCAAGAATGACGCTGGCCAGGCGGAGTGTCTCTGCCAAGTACCCTGGATGATGCT  
 CCAGCCAGTGAGAACACCAAGGCCCCAGAGATGAAATCCCGGAGGCCAAGAGCTCTCTCTCCGTGC  
 TAGGAACCTGAGAGTGATGCGACTGTGAAAAGAAACCTGCCCCCAAGACACCTCCGAAGGAGCAATGCC  
 CCCTCAGATCATCCAGTCCCTGAGGACCAGAAGGTACGCGCAGGAGAGTCACTGGAGCTGTTTGGCAAA  
 GTGACAGGCACTCAGCCATCACCTGTACTGGATGAAGTTCCGAAAGCAGATCCAGGAAAGCGAGCACA  
 TGAAGGTGGAGAACAGCGAGAAATGGCAGCAAGCTCACCATCCTGGCCGCGGCCAGGAGCACTGCGGCTG  
 CTACACACTGCTGGTGGAGAACAAGCTGGGCAGCAGGCAAGGCAACCTCACTGCTGATGATAAG  
 CCAGACCCCCAGCTGGCACACCTTGTGCCTCTGACATTCGGAGCTCCTCACTGACCCTGTCTGGTATG  
 GCTCCTCATATGATGGGGCAGTGTGTACAGTCTACAGCATCGAGATCTGGACTCAGCCAACAAGAC  
 GTGGAAGGAACTAGCCACATGCCGAGCACCTTTTCAACGTCCAGGACCTGCTGCCTGACCACGAATAT  
 AAGTTCCTGTACGTGCAATCAACGTGTATGGAACCAAGTGAAGCCAAAGCCAGGAGTCTGAACTCACAACGG  
 TAGGAGAGAAACCTGAAGAGCCGAAGGATGAAGTGGAGGTGTGAGATGATGATGAGAAGGAGCCGAGGT  
 TGATTACCGGACAGTGACAATCAATACTGAACAAAAGTATCTGACTTCTACGACATTGAGGAGAGATTA  
 GGATCTGGGAAATTTGGACAGGTCTTTCGACTTGTAGAAAAGAAAACCTGAAAAGTCTGGGCAGGGAAGT  
 TCTTCAAGGCATATTCAGCAAAGAGAAAAGAGAATATCCGGCAGGAGATTAGCATCATGAACTGCCTCCA  
 CCACCCTAAGCTGGTCCAGTGTGGATGCCTTTGAAGAAAAGGCCAACATCGTCATGGTCTGGAGATC  
 GTGTCAGGAGGGAGCTGTTTGGAGCATATTGACGAGGACTTTGAGCTGACGGAGCGTGAAGTGCATCA  
 AGTACATGCGGCAGATCTCGGAGGAGTGGAGTACATCCACAAGCAGGGCATCGTGCACCTGGACCTCAA  
 GCCGGAGAACATCATGTGTGTAACAAGACGGGACCAGGATCAAGCTCATCGACTTTGGTCTGGCCAGG  
 AGGCTGGAGAATGCGGGTCTCTGAAGGTCTCTTTGGCACCCCAAGATTTGGGCTCCTGAAGTATCA  
 ACTATGAGCCATCGGCTACGCCACAGACATGTGGAGCATCGGGTCTATCTGCTACATCCTAAACCGCCT  
 GGACTGCACGAGTGCCTTCCAGCATCCATGGCTAATGAAAGATACCAAGAACATGGAGGCCAAGAAACTC  
 TCCAAGGACCGGATGAAGAAGTACATGGCAAGAAGGAAATGGCAGAAAACGGGCAATGCTGTGAGAGCCA

TTGGAAGACTGTCTCTATGGCAATGATCTCAGGGCTCAGTGGCAGGAAATCCTCAACAGGGTCACCAAC  
 CAGCCCGCTCAATGCAGAAAACTAGAATCTGAAGAAGATGTGTCCCAAGCTTTCCTTGAGGCTGTTGCT  
 GAGGAAAAGCCTCATGTAAAACCCTATTCTCTAAGACCATTCCGCGATTTAGAAGTTGTGGAGGGAAGTG  
 CTGCTAGATTTGACTGCAAGATTGAAGGATACCCAGACCCCGAGGTTGTCTGGTTCAAAGATGACCAGTC  
 AATCAGGGAGTCCCGCCACTTCCAGATAGACTACGATGAGGACGGGAAGTCTCTTAATTATTAGTGAT  
 GTTTGCGGGGATGACGATGCCAAGTACACTGCAAGGCTGTCAACAGTCTTGAGAAGCCACCTGCACAG  
 CAGAGCTCATTGTGAAAACGATGGAGGAAGGTGAAGGGGAAGGGAAGAGGAAGAAGAG

ACGCGTACGCGGCCGCTCGAG – GFP Tag – GTTTAA

**Protein Sequence:**

>RG220501 representing NM\_053027  
 Red=Cloning site Green=Tags(s)

MGDVKLVASSHISKTSLVSDPSRVDSMPLTEAPAFILPPRNLCIKEGATAKFEGRVRYPEPQVWHRNG  
 QPITSGGRFLLDCGIRGTFSLVIHAVHEEDRGKYTCEATNGSGARQVTVELTVEGSFAKQLGQPVVSKTL  
 GDRFSAPAVETRPSIWGECPPKFATKLRVVVKEGQMGFRFSCKITGRPQVQVWLKGNVPLQPSARVSVS  
 EKNGMQVLEIHGVNQDDVGYTCLVNVGSGKASMSAELSIQGLDSANRSFVRETKATNSDVRKEVTNVIS  
 KESKLDSEAAAKSKNCSPPQRGGSPWAANSQPQPPRESKLESCKDSRPTAPQTPVLQKTSSSITLQAA  
 RVQPEPRAPGLGVLSPSGEERKRPAAPRPATFPTRQPLGSQDVVSKAANRRIPMEGQRDSAFPKEFKP  
 QSQEVKENQTVKFRCEVSGIPKPEVAWFLEGTVPVRRQEGSIEVYEDAGSHYLCCLKARTRDSGTYSCTAS  
 NAQQQLSCSWTLQVERLAVMEVAPSFSSVLKDCAVIEGQDFVLQCSVRGTPVPRITWLLNGQPIQYARST  
 CEAGVAELHIQDALPEDHGYTCLAENALGOVSCSAWVTVHEKKSRRKSEYLLPVAPSKPTAPIFLQGLS  
 DLKVMDSQVMTVQVSGNPPPEVIWLHNGNEIQESEDHFHQRTQHSLCIQEVFPEDTGTYTCEAWNS  
 AGEVRTQAVLTVQEPHDGTQPFISKPRSVTASLGGQSVLISCAIAGDPFPTVHWLRDGLKCKDGTGHEV  
 LQNEVDFTLVLLKVPWHAGQYIEILLKNRVGECSCQVSLMLQNSSARALPRGREPASCELDGGGVGADG  
 GGSDRYGSLRPGWPARGQWLEEDGEDVIRGVLKRRVETRQHTTEAIRQQEVEQLDFRDLLGKKVSTKTL  
 SEDDLKEIPAEQMDFRANLQRQVKPKTVSEEERKVHSPQQVDFRSVLAKKGTSKTPVPEKVPPKATPD  
 FRSVLGGKKKLPANENGSSAETLNAKAVESSKPLSNAQPSGPKPVGNAPKPAETLKPMPGNAPKPAETLKP  
 MGNAPDENLKSASKEELKDKVNDVNCRKHAGTTDNEKRSESGTAPAFKQKLQDVHVAEGKLLQLQCQ  
 VSSDPPATIIWTLNGKTLKTKFIILSQEGSLCSVSIEKALPEDRGLYKCVAKNDAGQAECSCQVTVDDA  
 PASENTKAPEMKSRRPKSSLPPVLGTESDATVKKKPPAKTPPKAAMPPIIQFPEDQKVRAGESVELFGK  
 VTGTQPICTWMMFRKQIQESEHMKVENSENGSKLTILAAARQEHCGCYTLLVENKLGSRQAQVNLTVVDK  
 PDPPAGTPCASDIRSSSLTLSWYGSSYDGGSAVQSYSIEIWDSSANKTWKELATCRSTSFNVQDLLPDHEY  
 KFRVRAINVYGTSEPSQESELTTVGEKPEEPKDEVEVSDDDEKEPEVDYRTVTINTEQKVSDFYDIEERL  
 GSGKFGQVFRLEKTRKRWAGKFFKAYSAREKENIRQEI SIMNCLHHPKLVQCVDAFEKANIVMVEI  
 VSGGELFERIIDDFELTERECIKYMRQISEGVEYIHKQGIVHLDLKPENIMCVNKTGTRIKLIDFGLAR  
 RLENAGSLKVLFGTPEFVAPEVINYEPYGYATDMWSIGVICYILNRLDCTQLQHPWLMKDTKNMEAKKL  
 SKDRMKKYMARRKWKQKTGNVRAIGRLSSMAMISGLSGRKSSTGSPTSPLNAEKLESEEDVSQAFLEAVA  
 EEKPHVKPYFSKTIIRDLEVEGSAARFDCKIEGYDPDEVVWFKDDQSIRESRHFQIDYDEDGNCSLIIISD  
 VCGDDDAKYTCKAVNSLGEATCTAELIVETMEEGEGEGEEEE

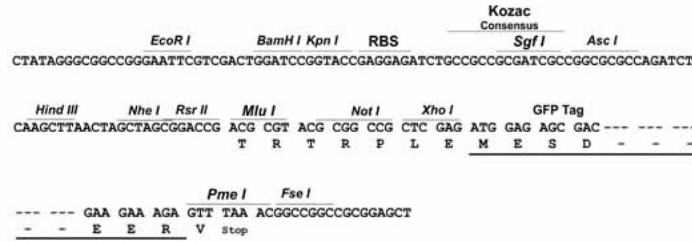
TRTRPLE – GFP Tag – V

**Restriction Sites:**

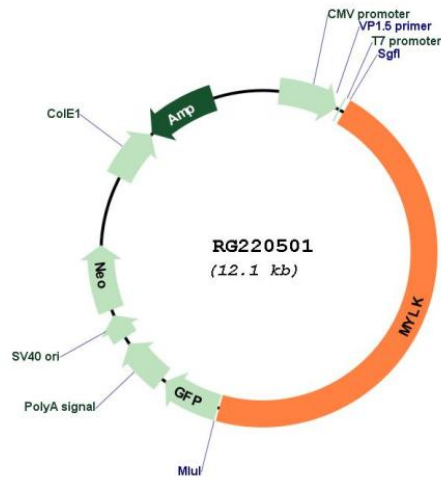
SgfI-MluI

Cloning Scheme:

Cloning sites used for ORF Shutting:



Plasmid Map:



ACCN: NM\_053027

ORF Size: 5589 bp

<b>OTI Disclaimer:</b>	The molecular sequence of this clone aligns with the gene accession number as a point of reference only. However, individual transcript sequences of the same gene can differ through naturally occurring variations (e.g. polymorphisms), each with its own valid existence. This clone is substantially in agreement with the reference, but a complete review of all prevailing variants is recommended prior to use. <a href="#">More info</a>
<b>OTI Annotation:</b>	This clone was engineered to express the complete ORF with an expression tag. Expression varies depending on the nature of the gene.
<b>Components:</b>	The ORF clone is ion-exchange column purified and shipped in a 2D barcoded Matrix tube containing 10ug of transfection-ready, dried plasmid DNA (reconstitute with 100 ul of water).
<b>Reconstitution Method:</b>	<ol style="list-style-type: none"><li>1. Centrifuge at 5,000xg for 5min.</li><li>2. Carefully open the tube and add 100ul of sterile water to dissolve the DNA.</li><li>3. Close the tube and incubate for 10 minutes at room temperature.</li><li>4. Briefly vortex the tube and then do a quick spin (less than 5000xg) to concentrate the liquid at the bottom.</li><li>5. Store the suspended plasmid at -20°C. The DNA is stable for at least one year from date of shipping when stored at -20°C.</li></ol>
<b>RefSeq:</b>	<a href="#">NM_053027.4</a>
<b>RefSeq Size:</b>	7699 bp
<b>RefSeq ORF:</b>	5592 bp
<b>Locus ID:</b>	4638
<b>UniProt ID:</b>	<a href="#">Q15746</a>
<b>Cytogenetics:</b>	3q21.1
<b>Protein Families:</b>	Druggable Genome, Protein Kinase
<b>Protein Pathways:</b>	Calcium signaling pathway, Focal adhesion, Regulation of actin cytoskeleton, Vascular smooth muscle contraction
<b>Gene Summary:</b>	This gene, a muscle member of the immunoglobulin gene superfamily, encodes myosin light chain kinase which is a calcium/calmodulin dependent enzyme. This kinase phosphorylates myosin regulatory light chains to facilitate myosin interaction with actin filaments to produce contractile activity. This gene encodes both smooth muscle and nonmuscle isoforms. In addition, using a separate promoter in an intron in the 3' region, it encodes telokin, a small protein identical in sequence to the C-terminus of myosin light chain kinase, that is independently expressed in smooth muscle and functions to stabilize unphosphorylated myosin filaments. A pseudogene is located on the p arm of chromosome 3. Four transcript variants that produce four isoforms of the calcium/calmodulin dependent enzyme have been identified as well as two transcripts that produce two isoforms of telokin. Additional variants have been identified but lack full length transcripts. [provided by RefSeq, Jul 2008]