

Product datasheet for **RG220493**

Contactin 1 (CNTN1) (NM_175038) Human Tagged ORF Clone

Product data:

Product Type:	Expression Plasmids
Product Name:	Contactin 1 (CNTN1) (NM_175038) Human Tagged ORF Clone
Tag:	TurboGFP
Symbol:	CNTN1
Synonyms:	F3; GP135; MYPCN
Mammalian Cell Selection:	Neomycin
Vector:	pCMV6-AC-GFP (PS100010)
E. coli Selection:	Ampicillin (100 ug/mL)
ORF Nucleotide Sequence:	>RG220493 representing NM_175038 Red=Cloning site Blue=ORF Green=Tags(s)

TTTTGTAATACGACTCACTATAGGGCGGCCGGAATTCGTCGACTGGATCCGGTACCGAGGAGATCTGCC
GCC**CGATCGCC**

ATGAAAATGTGGTTGCTGGTCAGTCATCTTGTGATAATATCTATTACTACCTGTTTAGCAGTTTCTGAGG
AAGACAAAGGATTTGGACCAATTTTTGAAGAGCAGCCAATCAATACCATTATCCAGAGGAATCACTGGA
AGGAAAAGTCTCACTCACTGTAGGGCAGGAGCCAGCCCTTTCCCGTTTACAAATGGAGAATGAATAAT
GGGACGTTGATCTCACAAGTATCGATACAGTATGGTAGGAGGAAACCTTGTATCAACAACCTGACA
AACAGAAAGATGCTGGAATATACTACTGTTTAGCATCTAATAACTACGGGATGGTCAGAAGCACTGAAGC
AACCTGAGCTTTGGATATCTTGATCCTTTCCACCTGAGGAACGTCCTGAGGTCAGAGTAAAAGAAGGG
AAAGGAATGGTGCTTCTCTGTGACCCCCATACCATTTTCCAGATGATCTTAGCTATCGCTGGCTCTAA
ATGAATTTCTGTATTTATCACAATGGATAAACGGCGATTTGTGTCTCAGACAAATGGCAATCTCTACAT
TGCAAAATGTTGAGGCTCCGACAAAGGCAATTATTCCTGCTTTGTTTCCAGTCTTCTATTACAAAGAGC
GTGTTCCAGCAAATTCATCCCACTCATTCCAATACCTGAACGAACAACAAACCATATCCTGCTGATTTG
TAGTTCAGTTCAGGATGTATATGCATTGATGGCCAAAATGTGACCTTAGAATGTTTTGCACCTGGAAA
TCCTGTTCCGGATATCCGATGGCGGAAGGTTCTAGAACCAATGCCAAGCACTGCTGAGATTAGCACCTCT
GGGCTGTTCTTAAGATCTTCAATATTCAGCTAGAAGATGAAGGCATCTATGAATGTGAGGCTGAGAACA
TTAGAGGAAAGGATAAACATCAAGCAAGAATTTATGTTCAAGCATTCCCTGAGTGGGTAGAACACATCAA
TGACACAGAGGTGGACATAGGCAGTGATCTCTACTGGCCTTGTGTGGCCACAGGAAAGCCATCCCTACA
ATCCGATGGTTGAAAAATGGATATGCGTATCATAAAGGGGAATTAAGACTGTATGATGTGACTTTTGAAA
ATGCCGGAATGTATCAGTGCATAGCTGAAAACACATATGGAGCCATTTATGCAAAATGCTGAGTTGAAGAT
CTTGGCGTTGGCTCCAACCTTTTGAATGAATCCTATGAAGAAAAAGATCCTGGCTGCTAAAGGTGGAAGG
GTGATAATTGAATGCAAACTAAAGCTGCACCGAAACCAAGTTTTTCATGGAGTAAAGGGACAGAGTGCC
TTGTCAATAGCAGCAGAATACTCATTGGGAAGATGGTAGCTTGGAAATCAACAACATTACAAGGAATGA
TGGAGGTATCTATACATGCTTTGCAGAAAATAACAGAGGGAAGCTAATAGCACTGGAACCTTGTATATC



[View online »](#)

ACAGATCCTACGCGAATTATATTGGCCCAATTAATGCCGATATCACAGTTGGAGAAAACGCCACCATGC
 AGTGTGCTGCGTCCTTTGATCCTGCCTTGGATCTCACATTTGTTTGGTCCTTCAATGGCTATGTGATCGA
 TTTTAAACAAGAGAATATTCCTACTACCAGAGGAATTTTATGCTGGATTCCAATGGGGAATTAATAATCCGA
 AATGCGCAGCTGAAACATGCTGGAAGATACACATGCACTGCCAGACAATTTGGGACAATTTCTCAGCTT
 CAGCTGACCTTGTAGTGAGAGGCCCTCCAGGCCCTCCAGTGGTCTGAGAATAGAAGACATTAGAGCCAC
 TTCTGTGGCACTTACTTGGAGCCGTGGTTCAGACAATCATAGTCCATTTCTAAATACACTATCCAGACC
 AAGACTATTTCTTTCAGATGACTGGAAAGATGCAAAGACAGATCCCCAATTATTGAAGGAATATGGAGG
 CAGCAAGAGCAGTGGACTTAATCCCATGGATGGAGTATGAATTCGCGTGGTAGCAACCAATACACTGGG
 TAGAGGAGAGCCAGTATACCATCTAACAGAAATAAAACAGACGGTCTGCACCAATGTGGCTCCTTCA
 GATGTAGGAGGTGGAGGTGGAAGAAACAGAGAGCTGACCATAACATGGGCGCCTTTGTCAAGAGAATACC
 ACTATGGCAACAATTTTGGTTACATAGTGGCATTAAAGCCATTTGATGGAGAAGAATGGAAGAAAGTAC
 AGTTACTAATCCTGATACTGGCCGATATGTCCATAAAGATGAAACCATGAGCCCTTCCACTGCATTTCAA
 GTTAAAGTCAAGGCCCTTCAACAACAAGGAGATGGACCTTACAGCCTAGTAGCAGTCATTAATTCAGCAC
 AAGACGCTCCCAGTGAAGCCCCAACAGAAGTAGGTGTAAGTCTTATCATCTTCTGAGATATCTGTTCA
 TTGGGAACATGTTTTAGAAAAAATAGTGGAAAGCTATCAGATTCGGTATTGGGCTGCCCATGACAAAGAA
 GAAGCTGCAAACAGAGTTCAAGTACCAGCCAAGAGTACTCGGCCAGGCTCGAGAACCTTCTGCCAGACA
 CCCAGTATTTTATAGAAGTCGGGCGCTGCAATAGTGCAGGGTGTGGACCTCCAAGTGACATGATTGAGGC
 TTTACCAAGAAAGCACCTCCTAGCCAGCCTCAAAGATCATCAGTTCAGTAAGGTCTGGTTCACGCTAT
 ATAATCACCTGGGATCATGTCTGTGCACTATCAATGAATCTACAGTGACGGGATATAAGGTACTCTACA
 GACCTGATGGCCAGCATGATGGCAAGCTGTATTCAACTCACAACACTCCATAGAAGTCCCAATCCCCAG
 AGATGGAGAATACGTTGTGGAGGTTCCGCGCACAGTGTGGAGGAGATGGAGTGGTGTCTCAAGTCAAA
 ATTTCAGGTGCACCCACCTATCCCAAGTCTTCTCGGCTTACTGCTGCCTGCCTTTGGCATCCTGTCT
 ACTTGAATTC

ACGCGTACGCGGCCGCTCGAG - GFP Tag - GTTTAA

Protein Sequence:

>RG220493 representing NM_175038
 Red=Cloning site Green=Tags(s)

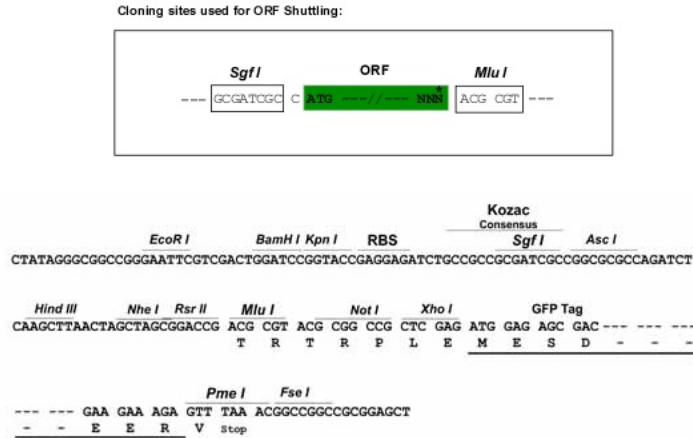
MKMWLLVSHLVIISITTCVAVSEEDKGFPIFEEQPIINTIYPEESLEGVSLNCRARASFPFVYKWRMNN
 GDVLTSDRYSMVGGNLVINNPDKQKQDAGIYYCLASNNGMVRSTEATLSFGYLDPFPEERPEVRVKEG
 KGMVLLCDPPYHFPDDL SYRWLLNEFPVITMDKRRFVSQTNGNLYIANVEASDKGNYSFVSSPITKS
 VFSKFIPLIPIPERTTKYPADIVVQFKDVYALMGQNVTLFCFALGNPVPDIRWRKVLPEMPSTAEISTS
 GAVLKIFNIQLEDEGIYECEAENIRGKDKHQARIYVQAFPEWVEHINDTEVDIGSDLYWPCVATGKPIPT
 IRWLKNGYAYHKGELRLYDVTTFENAGMYQCI AENTYGA IYANAELKILALAPT FEMNPMKKKILAAGGR
 VIIIECKPKAAPKPKFSWSKGTEWLVNSSRILIWEDGSLEINNITRNDGGIYTCFAENNRKANSTGTLVI
 TDPTRII LAPINADITVGENATMQCAASFD PALDLTFVWSFNGYVIDFNKENIHYQRNFMLDSNGELLIR
 NAQLKHAGRYTCTAQTIVDNSSASADLVVRGPPGPPGGLRIEDIRATSVALTWSRGSNDHSPISKYTIQT
 KTIILSDDWDAKTDPPIIIEGNME AARAVDLIPWMEYEFV VVATNTLGRGEP SIPSRIKTDGAAPNVAPS
 DVGGGGGRNRELITWAPLSREYHYGNFYGIVAFKPF DGEWKKVVTNPTDGRYVHKDETMSPSTAFQ
 VKYKAFNNKGDGPYSLVAVINSAQDAPSEAPTEVGVKVLSSSEISVHWEHVLEKIVESYQIRYWAHDKE
 EAANRVQVTSQEYSARLENLLPDTQYFIEVGACNSAGCGPPSDMIEAFTKKAPPSQPPRIISSVRSGRY
 IITWDHVVALSNESTVTGYKVL YRPDGGQHDGKLYSTHKHSIEVPIPRDGEYVVEVRAHSDGGDGVVSQVK
 ISGAPTLSPSLLGLLLPAFGILVYLEF

TRTRPLE - GFP Tag - V

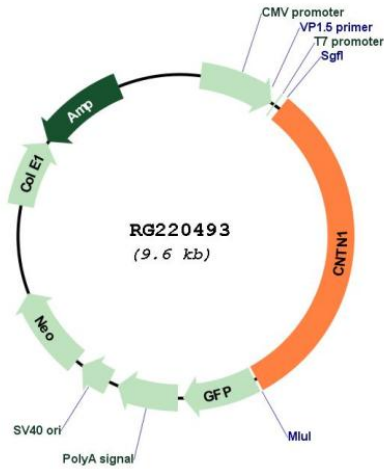
Restriction Sites:

Sgfl-MluI

Cloning Scheme:



Plasmid Map:



ACCN: NM_175038

ORF Size: 3021 bp

OTI Disclaimer: The molecular sequence of this clone aligns with the gene accession number as a point of reference only. However, individual transcript sequences of the same gene can differ through naturally occurring variations (e.g. polymorphisms), each with its own valid existence. This clone is substantially in agreement with the reference, but a complete review of all prevailing variants is recommended prior to use. [More info](#)

OTI Annotation:	This clone was engineered to express the complete ORF with an expression tag. Expression varies depending on the nature of the gene.
Components:	The ORF clone is ion-exchange column purified and shipped in a 2D barcoded Matrix tube containing 10ug of transfection-ready, dried plasmid DNA (reconstitute with 100 ul of water).
Reconstitution Method:	<ol style="list-style-type: none">1. Centrifuge at 5,000xg for 5min.2. Carefully open the tube and add 100ul of sterile water to dissolve the DNA.3. Close the tube and incubate for 10 minutes at room temperature.4. Briefly vortex the tube and then do a quick spin (less than 5000xg) to concentrate the liquid at the bottom.5. Store the suspended plasmid at -20°C. The DNA is stable for at least one year from date of shipping when stored at -20°C.
RefSeq:	NM_175038.2 , NP_778203.1
RefSeq Size:	3394 bp
RefSeq ORF:	3024 bp
Locus ID:	1272
UniProt ID:	Q12860
Cytogenetics:	12q12
Protein Pathways:	Cell adhesion molecules (CAMs)
Gene Summary:	The protein encoded by this gene is a member of the immunoglobulin superfamily. It is a glycosylphosphatidylinositol (GPI)-anchored neuronal membrane protein that functions as a cell adhesion molecule. It may play a role in the formation of axon connections in the developing nervous system. Multiple alternatively spliced transcript variants encoding different isoforms have been found for this gene. [provided by RefSeq, Dec 2011]