

Product datasheet for **RG220451**

Myosin light chain kinase (MYLK) (NM_053028) Human Tagged ORF Clone

Product data:

Product Type:	Expression Plasmids
Product Name:	Myosin light chain kinase (MYLK) (NM_053028) Human Tagged ORF Clone
Tag:	TurboGFP
Symbol:	MYLK
Synonyms:	AAT7; KRP; MLCK; MLCK1; MLCK108; MLCK210; MMIHS; MMIHS1; MSTP083; MYLK1; smMLCK
Mammalian Cell Selection:	Neomycin
Vector:	pCMV6-AC-GFP (PS100010)
E. coli Selection:	Ampicillin (100 ug/mL)
ORF Nucleotide Sequence:	>RG220451 representing NM_053028 Red=Cloning site Blue=ORF Green=Tags(s)

TTTTGTAATACGACTCACTATAGGGCGGCCGGAATTCGTCGACTGGATCCGGTACCGAGGAGATCTGCC
GCC**CGATCGCC**

ATGGGGGATGTGAAGCTGGTTGCCTCGTCACACATTTCCAAAACCTCCCTCAGTGTGGATCCCTCAAGAG
TTGACTCCATGCCCTGACAGAGGCCCTGCTTTCATTTTGGCCCTCGGAACCTCTGCATCAAAGAAGG
AGCCACCGCCAAGTTCGAAGGGCGGGTCCGGGGTTACCCAGAGCCCAAGTGACATGGCACAGAAACGGG
CAACCCATCACCAGCGGGGGCCGCTTCTGCTGGATTGCGGCATCCGGGGGACTTTCAGCCTTGATTG
ATGCTGTCCATGAGGAGGACAGGGAAAGTATACCTGTGAAGCCACCAATGGCAGTGGTGTCTGCCAGGT
GACAGTGGAGTTGACAGTAGAAGGAAGTTTTCGAAGCAGCTTGGTCAGCCTGTTGTTTCCAAAACCTTA
GGGATAGATTTTCAGCTCCAGCAGTGGAGACCCGTCCTAGCATCTGGGGGAGTGCCCAACAAAGTTTG
CTACCAAGCTGGGCCGAGTTGTGGTCAAAGAAGGACAGATGGGACGATTCTCTGCAAGATCACTGGCCG
GCCCAACCGCAGGTCACCTGGCTCAAGGGAAATGTTCCACTGCAGCCGAGTGCCCGTGTGTCTGTGTCT
GAGAAGAACGGCATGCAGGTTCTGGAAATCCATGGAGTCAACCAAGATGACGTGGGAGTGTACACGTGCC
TGGTGGTGAACGGGTCGGGGAAGCCTCGATGTCAGTGAACCTTCCATCCAAGTTTGGACAGTGCCAA
TAGGTCAATTTGTGAGAGAAACAAAAGCCACCAATTCAGATGTCAGGAAAGAGGTGACCAATGTAATCTCA
AAGGAGTCGAAGCTGGACAGTCTGGAGGCTGCAGCCAAAAGCAAGAACTGCTCCAGCCCCAGAGAGGTG
GCTCCCCACCCTGGGCTGCAAACAGCCAGCCTCAGCCCCAAGGGAGTCCAAGCTGGAGTATGCAAGGA
CTCGCCAGAACGGCCCCGAGACCCCGTCTTCCAGAACTTCCAGCTCCATACCCCTGCAGGCGCA
AGAGTTACCGGAACCAAGAGCACCAGGCTGGGGTCTATCACCTTCTGGAGAAGAGAGGAAGAGGC
CAGCTCTCCCCGTCCAGCCACCTTCCCCACCAGGCAGCCTGGCCTGGGAGCCAAGATGTTGTGAGCAA
GGCTGCTAACAGGAGAATCCCCATGGAGGGCCAGAGGGATTGAGCATTCCCCAAATTTGAGAGCAAGCCC
CAAAGCCAGGAGGTCAAGGAAAATCAAAGTGTCAAGTTTCAGATGTGAAGGGCTTGCCGTGATGGAGGTGG
CCCCCTCTTCTCCAGTGTCTGAAGGACTGCGCTGTTATTGAGGGCCAGGATTTGTGCTGCAGTGCTC
CGTACGGGGACCCAGTGCCCGGATCACTTGGCTGCTGAATGGCAGCCCATCCAGTACGCTCGCTCC



[View online »](#)

ACCTGCGAGGCCGGCTGGCTGAGCTCCACATCCAGGATGCCCTGCCGGAGGACCATGGCACCTACACCT
GCCTAGCTGAGAAATGCCTTGGGGCAGGTGTCTGCAGCGCCTGGGTACCCTGATGAAAAGAAGAGTAG
CAGGAAGAGTGAGTACCTTCTGCCTGTGGCTCCCAGCAAGCCACTGCACCCATCTTCTGCAGGGCCTC
TCTGATCTCAAAGTCATGGATGGAAGCCAGGTCACTATGACTGTCCAAGTGTGAGGAATCCACCCCTG
AAGTCATCTGGCTGCACAATGGGAATGAGATCCAAGAGTCAGAGGACTTCCACTTTGAACAGAGAGGAAC
TCAGCACAGCCTTTGTATCCAGGAAGTGTCCCGGAGGACACGGGCACGTACACCTGCGAGGCCGGAAC
AGCGCTGGAGAGGTCCGCACCCAGGCCGTGCTCACGGTACAAGAGCCTCACGATGGCACCCAGCCCTGGT
TCATCAGTAAGCCTCGCTCAGTGACAGCCTCCCTGGGCCAGAGTGTCTCATCTCCTGCGCCATAGCTGG
TGACCCCTTTCTACCGTGCCTGGCTCAGAGATGGCAAAGCCCTCTGCAAAGACTGGCCACTTCGAG
GTGCTTCAAGATGAGGACGTGTTACCCTGTTTAAAGAAGGTGCAGCCCTGGCATGCCGGCCAGTATG
AGATCCTGCTCAAGAACCAGGTTGGCAATGCAGTTGCCAGGTGTACTGATGCTACAGAACAGCTCTGC
CAGAGCCCTTCCACGGGGAGGGAGCCTGCCAGCTGCGAGGACCTCTGTGGTGGAGGAGTTGGTCTGAT
GGTGGTGTAGTGACCGCTATGGTCCCTGAGGCCCTGGTGGCCAGCAAGAGGGCAGGGTTGGCTAGAGG
AGGAAGACGGCGAGGACGTGCGAGGGGTGCTGAAGAGGCGCTGGAGACGAGGCAGCACACTGAGGAGGC
GATCCGCCAGCAGGAGGTGGAGCAGCTGGACTTCCGAGACCTCCTGGGGAAGAAGGTGAGTACAAGACC
CTATCGGAAGACGACCTGAAGGAGATCCAGCCGAGCAGATGGATTTCCGTGCCAACCTGCAGCGGCAAG
TGAAAGCAAAGACTGTGTCTGAGGAAGAGAGGAAGGTGCACAGCCCCAGCAGGTCGATTTTCGCTCTGT
CCTGGCCAAGAAGGGGACTTCCAAGACCCCGTGCCTGAGAAGGTGCCACCGCCAAAACCTGCCACCCCG
GATTTTCGCTCAGTGTGGTGGCAAGAAGAAATTACCAGCAGAGAATGGCAGCAGCAGTCCGAGACCC
TGAATGCCAAGGCAGTGGAGAGTTCCAAGCCCTGAGCAATGCACAGCCTTACAGGCCCTTGAACCCGT
GGGCAACGCCAAGCCTGCTGAGACCTGAAGCCAATGGCAACGCCAAGCCTGCCGAGACCTGAAGCCC
ATGGGCAATGCCAAGCCTGATGAGAACCCTGAAATCCGCTAGCAAAGAAGAACTCAAGAAAAGACGTTAAGA
ATGATGTGAAGTCAAGAGAGGCCATGACAGGACCACAGATAATGAAAAGAGATCAGAGGCCAGGGGAC
AGCCCCAGCCTTCAAGCAGAAGCTGCAAGATGTTTCAATGTGGCAGAGGGCAAGAAGCTGCTCTCCAGTGC
CAGGTGTCTTCTGACCCCCAGCCACCATCATCTGGACGTGAACGGAAAAGACCCTCAAGACCACCAAGT
TCATCATCTCTCCAGGAAGGCTCACTCTGCTCCGTCTCCATCGAGAAGGCACTGCCTGAGGACAGAGG
CTTATACAAGTGTGTAGCCAAGAATGACGCTGGCCAGGCGGAGTGTCTTCCCAAGTACCCTGGATGAT
GCTCCAGCCAGTGAGAACACCAAGGCCCCAGAGATGAAATCCCGGAGGCCAAGAGCTCTTCTCTCCCG
TGCTAGGAACTGAGAGTGTGCGACTGTGAAAAGAAACCTGCCCAAGACACCTCCGAAGGCAGCAAT
GCCCCCTCAGATCATCCAGTTCCTGAGGACCAGAAGGTACGCGCAGGAGAGTCACTGGAGCTGTTTGGC
AAAGTGACAGGCACTCAGCCATCACCTGTACCTGGATGAAGTTCGAAAGCAGATCCAGGAAAGCGAGC
ACATGAAGGTGGAGAACAGCGAGAATGGCAGCAAGCTCACCATCCTGGCCGCGCGCCAGGAGCACTGCGG
CTGCTACACACTGCTGGTGGAGAACAAGCTGGGCAGCAGGCGAGGCCAGGTCAACCTCACTGTCTGGAT
AAGCCAGACCCCCAGCTGGCACACCTTGTGCCTCTGACATTCGGAGCTCCTCACTGACCCTGTCCTGGT
ATGGCTCCTCATATGATGGGGCAGTGTGTACAGTCTACAGCATCGAGATCTGGGACTCAGCCAACAA
GACGTGGAAGGAACTAGCCACATGCCGCAGCACCTTTTCAACGTCCAGGACCTGCTGCCTGACCACGAA
TATAAGTTCGGTGTACGTGCAATCAACGTGTATGGAACCAAGTGAAGCAAGCCAGGAGTCTGAACTCACA
CGGTAGGAGAGAACTGAAGAGCCGAAGGATGAAGTGGAGGTGTGAGATGATGATGAGAAGGAGCCCGA
GGTTGATTACCGGACAGTGACAATCAACTACTGAACAAAAGTATCTGACTTCTACGACATGAGGAGAGA
TTAGGATCTGGGAAATTTGGACAGGTCTTTCGACTTGTAGAAAAGAAAACCTCGAAAAGTCTGGGCAGGGA
AGTTCTTCAAGGCATATTCAGCAAAAGAGAAAAGAAATATCCGGCAGGAGATTAGCATCATGAACTGCCT
CCACCACCCTAAGCTGGTCCAGTGTGTGGATGCCTTTGAAGAAAAGGCCAACATCGTATGGTCTGGAG
ATCGTGTGAGGAGGGGAGCTGTTTGGCGCATCTTACGAGGACTTTGAGCTGACGGAGCGTGTGATGCA
TCAAGTACATGCGGCAGATCTCGGAGGAGTGGAGTACATCCACAAGCAGGGCATCGTGCACCTGGACCT
CAAGCCGGAGAACATCATGTGTGTAACAAGACGGGCACCAGGATCAAGCTCATGACTTTGGTCTGGCC
AGGAGGCTGGAGAATGCGGGTCTCTGAAGTCTCTTTGGCACCCAGAAATTTGGTCTCTGAAGTGA
TCAACTATGAGCCATCGCTACGCCACAGACATGTGGAGCATCGGGTCTCTGCTACATCTAAACCG
CCTGGACTGCACGAGTGCCTTACGATCCATGGCTAATGAAAGATACCAAGAACATGGAGGCCAAGAAA
CTCTCAAAGGACCGGATGAAGAAGTACATGGCAAGAAGGAAATGGCAGAAAACGGGCAATGCTGTGAGAG
CCATTGGAAGACTGTCCTCTATGGCAATGATCTCAGGGCTCAGTGGCAGGAAATCCTCAACAGGGTCAAC
AACCAGCCGCTCAATGCAGAAAACCTAGAATCTGAAGAAGATGTGTCCCAAGCTTCTTGGAGCTGTT
GCTGAGGAAAAGCCTCATGTAAAACCTATTTCTAAGACCATTTCGCGATTTAGAAGTTGTGGAGGAA

GTGCTGCTAGATTTGACTGCAAGATTGAAGGATACCCAGACCCCGAGGTTGTCTGGTTCAAAGATGACCA
 GTCAATCAGGGAGTCCC GCCACTTCCAGATAGACTACGATGAGGACGGGAAGTCTTTAATTATTAGT
 GATGTTTTCGGGGATGACGATGCCAAGTACACCTGCAAGGCTGTCAACAGTCTTGAGGAAGCCACCTGCA
 CAGCAGAGCTCATTGTGGAAACGATGGAGGAAGGTGAAGGGGAAGGGGAAGAGGAAGAAGAG

ACGCGTACGCGGCCGCTCGAG – GFP Tag – GTTTAA

Protein Sequence:

>RG220451 representing NM_053028
 Red=Cloning site Green=Tags(s)

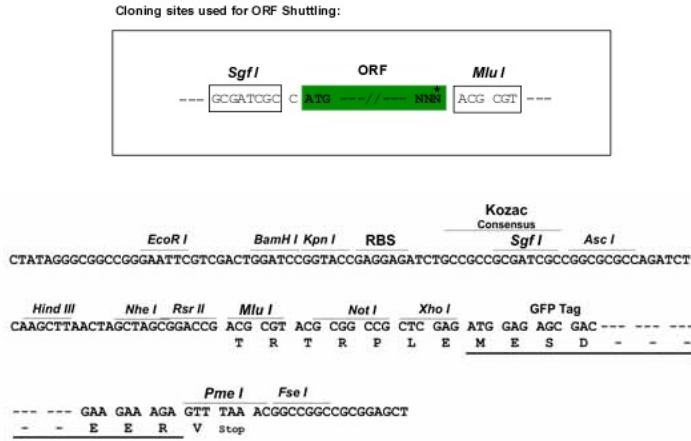
MGDVKLVASSHISKTSLVDPSPRVDSMPLTEAPAFILPPRNLCIKEGATAKFEGRVRYGYPEPQVTVHRNG
 QPITSGGRFLDCGIRGTFSLVIHAVHEEDRGKYTCEATNGSGARQVTVELTVEGSFAKQLGQPVVSKTL
 GDRFSAPAVETRPSTIWGECPPKFATKLRVVVKEGQMGRFSCKITGRPQPQVTVLKGNVLPQSARVSVS
 EKNGMQVLEIHGVNQDDVGVYTVLNVNGSGKASMSAELSIQGLDSANRSFVRETKATNSDVRKEVTNVIS
 KESKLDLSLEAAAKSKNCSPPQRGGSPWAANSQPQPPRESKLECKDSPRTAPQTPVLQKTSSTLQAA
 RVQPEPRAPGLGVLSPSGEERKRPAAPPATFPTRQPGLGSQDVVSKAANRRIPMEGQRDSAFPKEFKP
 QSQEVKENQTVKFRCEGLAVMEVAPSFSSVLKDCAVIEGQDFVLQCSVRGTPVPRITWLLNGQPIQYARS
 TCEAGVAELHIQDALPEDHGTYTCLAENALGQVSCSAWTVHEKSSRKSEYLLPVAPSKPTAPIFLQGL
 SDLKVMDSQVMTVQVSGNPPPEVIWLHNGNEIQESEDHFHEQRGTQHSLECIQEVFPEDTGTYTCEAWN
 SAGEVRTQAVLTVQEPHDGTQPFISKPRSVTASLGQSVLISCAIAGDPFPTVHWRDGLCKDTHGFE
 VLQNEVDVFTLVKKVQPHAGQYEILLKNRVGECSCQVSLMLQNSARALPRGREPASCEDLCGGGVGAD
 GGGSDRYGSLRPGWPARQGQWLEEDGEDVRGVLKRRVETRQHTEEAIRQQEVEQLDFRDLLGKKVSTKT
 LSEDDLKEIPAEQMDFRANLQRQVKPKTVSEERKVVHSPQQVDFRSVLAKKGTSTPVPKVPVPPKATP
 DFRSVLGGKKLPAENGSSAETLNAKAVESSKPLSNAQPSGPLKPVGNAPKPAETLKPMPGNAPKPAETLKP
 MGNAPDENLKSASKEELKDKVKNVNDVCKRGHAGTTDNEKRSESQGTAPAFKQKLQDVHVAEGKLLLCQ
 QVSSDPPATIIWTLNGKTLKTKFIILSQEGSLCSVSIKALPEDRGLYKCVAKNDAGQAECSCQVTVDD
 APASENTKAPEMKSRPKSSLPVLGTESDATVKKKPAKTPPKAAMPPIIQFPEDQKVRAGESVELFG
 KVTGTQPICTWMKFRKQIQESEHMKVENSENGSKLTIILAAARQEHCGCYLLVENKLGSRQAQVNLTVVD
 KPDPAGTPCASDIRSSSLTWSYGSSYDGGSAVQSYSIEIWDANKTWKELATCRSTSFNVQDLLPDHE
 YKFRVRAINVYGTSEPSQESELTTVGEKPEPKDEVEVSDDDEKEPEVDYRTVTINTEQKVSDFYDIEER
 LSGGKFGQVFRLEKTRKRVWAGKFFKAYSKEKENIRQEI SIMNCLHHPKLVQCVDAFEKANI VMVLE
 IVSGGELFERI IDEDFELTERECIKYMRQISEGVEYIHKQGI VHLDLKPENIMCVNKTGTRIKLIDFGLA
 RRLENAGSLKVLFGTPEFVAPEVINYEPIGYATDMWSIGVICYILNRLDCTQCLQHPWLMKDTKNMEAKK
 LSKDRMKYMARRWQKTGNAVRAIGRLSSMAMISGLSGRKSSTGSPTSPLNAEKLESEEDVSQAFLEAV
 AEEKPHVKPYFSKTI RDLEVVESGAARFDCKIEGYDPPEVWFKDDQSIRESRHFQIDYDEDGNCSLIIS
 DVCDDDAKYTCKAVNSLGEATCTAELIVETMEEGEGEGEEEE

TRTRPLE – GFP Tag – V

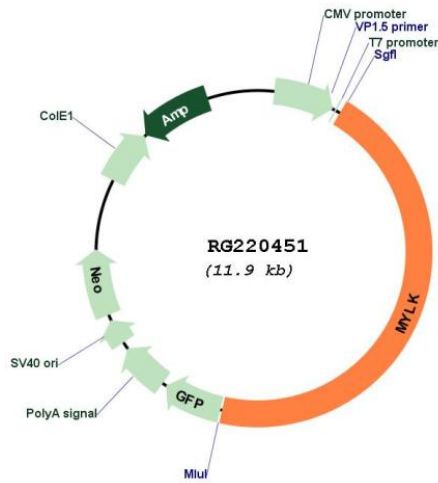
Restriction Sites:

SgfI-MluI

Cloning Scheme:



Plasmid Map:



ACCN:	NM_053028
ORF Size:	5382 bp
OTI Disclaimer:	The molecular sequence of this clone aligns with the gene accession number as a point of reference only. However, individual transcript sequences of the same gene can differ through naturally occurring variations (e.g. polymorphisms), each with its own valid existence. This clone is substantially in agreement with the reference, but a complete review of all prevailing variants is recommended prior to use. More info
OTI Annotation:	This clone was engineered to express the complete ORF with an expression tag. Expression varies depending on the nature of the gene.
Components:	The ORF clone is ion-exchange column purified and shipped in a 2D barcoded Matrix tube containing 10ug of transfection-ready, dried plasmid DNA (reconstitute with 100 ul of water).
Reconstitution Method:	<ol style="list-style-type: none">1. Centrifuge at 5,000xg for 5min.2. Carefully open the tube and add 100ul of sterile water to dissolve the DNA.3. Close the tube and incubate for 10 minutes at room temperature.4. Briefly vortex the tube and then do a quick spin (less than 5000xg) to concentrate the liquid at the bottom.5. Store the suspended plasmid at -20°C. The DNA is stable for at least one year from date of shipping when stored at -20°C.
RefSeq:	NM_053028.4
RefSeq Size:	7492 bp
RefSeq ORF:	5385 bp
Locus ID:	4638
UniProt ID:	Q15746
Cytogenetics:	3q21.1
Protein Families:	Druggable Genome, Protein Kinase
Protein Pathways:	Calcium signaling pathway, Focal adhesion, Regulation of actin cytoskeleton, Vascular smooth muscle contraction
Gene Summary:	This gene, a muscle member of the immunoglobulin gene superfamily, encodes myosin light chain kinase which is a calcium/calmodulin dependent enzyme. This kinase phosphorylates myosin regulatory light chains to facilitate myosin interaction with actin filaments to produce contractile activity. This gene encodes both smooth muscle and nonmuscle isoforms. In addition, using a separate promoter in an intron in the 3' region, it encodes telokin, a small protein identical in sequence to the C-terminus of myosin light chain kinase, that is independently expressed in smooth muscle and functions to stabilize unphosphorylated myosin filaments. A pseudogene is located on the p arm of chromosome 3. Four transcript variants that produce four isoforms of the calcium/calmodulin dependent enzyme have been identified as well as two transcripts that produce two isoforms of telokin. Additional variants have been identified but lack full length transcripts. [provided by RefSeq, Jul 2008]