

## Product datasheet for **RG220442**

### ITIH5 (NM\_001001851) Human Tagged ORF Clone

#### Product data:

Product Type:	Expression Plasmids
Product Name:	ITIH5 (NM_001001851) Human Tagged ORF Clone
Tag:	TurboGFP
Symbol:	ITIH5
Synonyms:	ITI-HC5; PP14776
Mammalian Cell Selection:	Neomycin
Vector:	pCMV6-AC-GFP (PS100010)
E. coli Selection:	Ampicillin (100 ug/mL)



[View online »](#)

ORF Nucleotide  
Sequence:

>RG220442 representing NM\_001001851  
Red=Cloning site Blue=ORF Green=Tags(s)

TTTTGTAATACGACTCACTATAGGGCGGCCGGGAATTCGTCGACTGGATCCGGTACCGAGGAGATCTGCC  
GCCCGCATCGCC

ATGCTCCTGCTGTGGGGCTGTGCCTGGGGCTGTCCCTGTGTGTGGGGTGCAGGAAGAGGCCAGAGCT  
GGGGCCACTCTTCGAGCAGGATGGACTCAGGGTCCCGAGGCAAGTCAGACTGTTGCAGAGGCTGAAAAC  
CAAACCTTTGATGACAGAATTCTCAGTGAAGTCTACCATCATTTCCCGTTATGCCTTCACTACGGTTTCC  
TGCAGAATGCTGAACAGAGCTTCTGAAGACCAGGACATTGAGTTCAGATGCAGATTCCAGCTGCAGCTT  
TCATCACCAACTTCACTATGCTTATTGGAGACAAGGTGTATCAGGGCGAAATTACAGAGAGAGAAAAGAA  
GAGTGGTATAGGGTAAAAGAGAAAAGGAATAAAACCACAGAAGAAAATGGAGAGAAGGGGACTGAAATA  
TTCAGAGCTTCTGCAGTATTCCAGCAAGGACAAAGCCGCTTTTTCTGAGTTATGAGGAGCTTCTGC  
AGAGGCGCTGGCAAGTACGAGCACAGCATCAGCGTGCAGCCAGCAGCTGTCCGGGAGGCTGAGCGT  
GGAGTGAATATCCTGGAGAGCGCGGCATCGCATCCCTGGAGGTGCTGCCGCTTACAACAGCAGGCAG  
AGGGGCAGTGGGCGCGGGAAGATGATTCTGGGCCTCCCCATCTACTGTCAATAACAAAATGAAACAT  
TTGCCAACATAATTTTTAAACCTACTGTAGTACAACAAGCCAGGATTGCCAGAATGGAATTTGGGAGA  
CTTTATCATTAGATATGACGTCAATAGAGAACAGAGCATTGGGGACATCCAGGTTCTAAATGGCTATTTT  
GTGCACTACTTTGCTCCTAAAGACCTTCTCCTTTACCAAGAATGTGGTATTCGTGCTTACAGCAGTG  
CTTCTATGGTGGGAACAAACTCCGGCAGACCAAGGATGCCCTTTCACAATTCTCCATGACCTCCGACC  
CCAGGACCGTTTCAGTATCATTGGATTTTCAACCGGATCAAAGTATGGAAGGACCACTTGATATCAGTC  
ACTCCAGACAGCATCAGGGATGGGAAAGTGTACATTACCATATGTCACCCACTGGAGGCACAGACATCA  
ACGGGGCCCTGCAGAGGGCCATCAGGCTCCTCAACAAGTACGTGGCCACAGTGGCATTGGAGACCGGAG  
CGTGTCCCTCATCGTCTTCTGACGGATGGGAAGCCACGGTCCGGGAGACGCACACCCTCAAGATCCTC  
AACAAACCCGAGAGGCCGCCGAGGCCAAGTCTGCATCTTACCATTGGCATCGCAACAGCAGTGGACT  
TCAGGCTGCTGGAGAACTGTGCTGGAGAAGTGTGGCCTCACACGGCGCGTGCACGAGGAGGAGGACGC  
AGGCTCGCAGCTCATCGGTTTACGATGAAATCAGGACCCCGCTCCTCTGACATCCGCATCGATTAT  
CCCCCAGCTCAGTGGTGCAGGCCACCAAGACCCTGTTCCCAACTACTTCAACGGCTCGGAGATCATCA  
TTGCGGGAAAGCTGGTGGACAGGAAGCTGGATCACCTGCACGTGGAGGTCACCGCCAGCAACAGTAAGAA  
ATTCATCATCCTGAAGACAGATGTGCCTGTGCGGCCTCAGAAGGCAGGAAAAGATGTCACAGGAAGCCCC  
AGGCTTGAGGCGATGGAGAGGGGACACCAACCACATCGAGCGTCTCTGGAGCTACCTCACCACAAGG  
AGCTGCTGAGCTCCTGGCTGCAAAGTGACGATGAACCGGAGAAGGAGCGGCTGCGGCAGCGGGCCAGGC  
CCTGGCTGTGAGCTACCGCTTCTCACTCCCTTCACTCCATGAAGCTGAGGGGGCCGGTCCCACGCATG  
GATGGCCTGGAGGAGGCCACGGCATGTGCGGTGCCATGGGACCCGAACCGGTGGTGCAGAGCGTGCAGG  
GAGCTGGCAGCGACCCAGGACCTTTGCTCAAGAAGCCATACCAGCCAAGAATTAATCTCTAAAACATC  
AGTTCGTGGCTTCAGAAGGAAGAACAGATTTTTTCAAATGTCATGAAATTTCTTTTGCAGCATCCTG  
GAACTA

ACGCGTACGCGGCCGCTCGAG - GFP Tag - GTTTAA

**Protein Sequence:** >RG220442 representing NM\_001001851  
 Red=Cloning site Green=Tags(s)

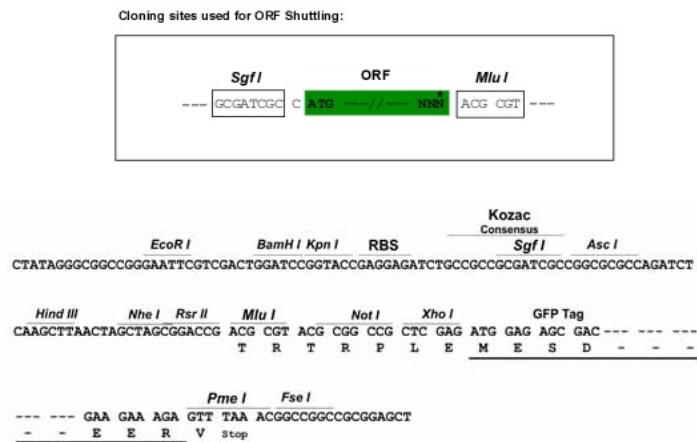
```

MLLLLGLCLGLSLCVGSQEEAQSWSGHSSEQDGLRVPRQVRLQLRKTPLMTEFSVKSTIISRYAFTTVS
CRMLNRASEDQDIEFQMQUIPAAAFITNFMTLIGDKVYQGEITEREKKSGDRVKEKRNKTTTEENGEKGTETI
FRASAVIPSKDKAAFFLSYEELLQRRLGKYEHSISVRPQQLSGRLSVDVNILESAGIASLEVLPLHNSRQ
RGSGRGEDDSGPPPSTVINQNETFANIIFKPTVVQQARIAQNGILGDFIIRYDVNREQSIGDIQVLNGYF
VHYFAPKDLPPLPKNVFVLDSSASVMGTCLRQTKDALFTILHDLRPQDRFSIIGFSNRKIVWKDHLISV
TPDSIRDGKVYIHHMSPTGGTDINGALQRAIRLLNKYVAHSGIGDRSVSLIVFLTDGKPTVGETHTLKIL
NNTREAARGQVCIFTIGIGNDVFRLLEKLSLENCGLTRRVHEEEDAGSQLIGFYDEIRTPLLSDIRIDY
PPSSVVQATKTLFPNYFNGSEIIAGKLVDRLDHLHVEVTASNSKFFIILKTDVPRPQKAGKDVTGSP
RPGGDGEGDTHIERLWSYLTTKELLSSWLQSDDEPEKERLRQRAQALAVSYRFLTPFTSMKLRGPVPRM
DGLEEAHGMSAAMGPEPVVQSVRGAGTQPGLLKKPYQPRIKISKTSVRGFRREEQIFSVMKFPFASILEL
  
```

TRTRPLE - GFP Tag - V

**Restriction Sites:** SgfI-MluI

**Cloning Scheme:**



**ACCN:** NM\_001001851

**ORF Size:** 2106 bp

**OTI Disclaimer:** The molecular sequence of this clone aligns with the gene accession number as a point of reference only. However, individual transcript sequences of the same gene can differ through naturally occurring variations (e.g. polymorphisms), each with its own valid existence. This clone is substantially in agreement with the reference, but a complete review of all prevailing variants is recommended prior to use. [More info](#)

**OTI Annotation:** This clone was engineered to express the complete ORF with an expression tag. Expression varies depending on the nature of the gene.

**Components:** The ORF clone is ion-exchange column purified and shipped in a 2D barcoded Matrix tube containing 10ug of transfection-ready, dried plasmid DNA (reconstitute with 100 ul of water).

**Reconstitution Method:**

1. Centrifuge at 5,000xg for 5min.
2. Carefully open the tube and add 100ul of sterile water to dissolve the DNA.
3. Close the tube and incubate for 10 minutes at room temperature.
4. Briefly vortex the tube and then do a quick spin (less than 5000xg) to concentrate the liquid at the bottom.
5. Store the suspended plasmid at -20°C. The DNA is stable for at least one year from date of shipping when stored at -20°C.

**RefSeq:** [NM\\_001001851.2](#)

**RefSeq Size:** 3105 bp

**RefSeq ORF:** 2109 bp

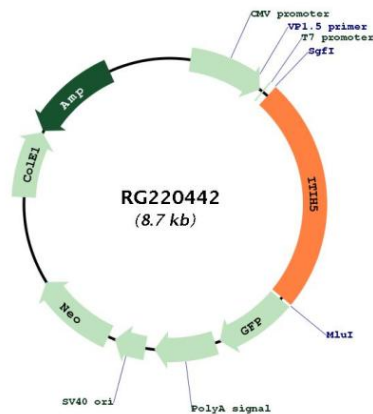
**Locus ID:** 80760

**UniProt ID:** [Q86UX2](#)

**Cytogenetics:** 10p14

**Gene Summary:** This gene encodes a heavy chain component of one of the inter-alpha-trypsin inhibitor (ITI) family members. ITI proteins are involved in extracellular matrix stabilization and in the prevention of tumor metastasis. They are also structurally related plasma serine protease inhibitors and are composed of a light chain and varying numbers of heavy chains. This family member is thought to function as a tumor suppressor in breast and thyroid cancers. Alternative splicing results in multiple transcript variants. [provided by RefSeq, Aug 2011]

### Product images:



Circular map for RG220442