

## Product datasheet for **RG220422**

### MSLNL (NM\_001025190) Human Tagged ORF Clone

#### Product data:

Product Type:	Expression Plasmids
Product Name:	MSLNL (NM_001025190) Human Tagged ORF Clone
Tag:	TurboGFP
Symbol:	MSLNL
Synonyms:	C16orf37; MPFL
Mammalian Cell Selection:	Neomycin
Vector:	pCMV6-AC-GFP (PS100010)
E. coli Selection:	Ampicillin (100 ug/mL)
ORF Nucleotide Sequence:	>RG220422 ORF sequence, <b>codon optimized</b> . Due to the complexity of NM_001025190, the ORF clone is codon optimized for mammalian Expression. The nucleotide sequence differs from the reference sequence, yet the amino acid sequence remains identical.

Red=Cloning site Blue=ORF Green=Tags(s)

TTTTGTAATACGACTCACTATAGGGCGGCCGGAATTCGTCGACTGGATCCGGTACCGAGGATCTGCC  
GCC**GCGATCGCC**

ATGGAAGTGTCTGGGGACCCAGGTATTCCTGCCCTCCACAGACTGTGCACCAGAGCCCTGTCTGCTTCCC  
CGGGACCGACCGCCCTCGGCCCTAGTACTTTCCATGGGACGTTTCCGCGAGAATGACCAGCGCCCG  
CCGCCGAAGTACGCTGGGCCACGGGTGGCTTTACATACCCTTGACCCAGCTGTCTCCACCAGAGCA  
CATCGGCATCTGCCGTTTCACTGTGACCTACCCGTGCACACAGCTCTCCCTACCAGGGCTCACAGCT  
GCCACCTGCCGATGCACACAGTTACTTATCCATGTACTCCCTACCAACCCGCGCCCACTCATGTCTCT  
CCCAGTTCATACTGTGACTTATACATGTACCCTGTCACCAACCCATGCATGCCTGCATGCTTCTACAGTG  
TCATGCCTGTGCTGCATTCCGGTGCATACCGTTACCTACCCATGCACGCTGAGCCCAACATGCGCGCATT  
GTCATCTGCACATGAGAGCCCGGACCCACCCAGCCACAGCATGCGCCGCTATTTGTGCATCCTGTC  
TCCGACTCGGGCTCATTGCCACCTTACGTACATACAGTTACGTACATGTGCGTCCCGCATGCACACAT  
TCTATACCCCGTACATGCACCTCCAGATACCAGTTGCGCATGGGCTCAAGCCGTGCATAGGTGGCCCG  
TCCTCTGGGGGAGCAGGAGTTCATCCATGAGCAGTGGGTTGAAACAGACCCCATGGTCGGCGTGACCGG  
TCCTCCTTGGGACCCCGACGCCCCGCCCGCCCGCAGGGACCCTGACCGCTCACCTCATACCAGGC  
GCTCTGCAGTCATCAGGACTCACCTGTGCTGTCTCTGGCGGCCACTGCTCAGGGCCCCAGGCTAAAG  
TCCTGTCTCCAGGTGGACTCGACGCTAGCGGGGCTAACCTGTGGGCTCAGCGAATTGCAGTCTTCTGCA  
GGGATTCTGGTGCAGCCCGCATCTCAGCTGCCAGGGATCAGCTCTCTGCCCTATCCAACGACTTGCC  
CTCTTGCAAGTGCCCTTGCAAGCCTGGCAGGTGTCAGGAAAGGAGTGCCGGGTGCCGGAACGGGCGCC



[View online »](#)

GGGGCGATGACCCACTTGTGGCAAAGAGGAAGAGAGGTGGGAGGAGACTGGGGACTGCGACCACCACA  
GAGAGGTCGCGCGCCGACCGGCTGCCACGGAGAGAGTTCGGTTACTCGCGAAAGGAGATCCGCGCAACTC  
TCTTGTCTCGCAAATTTGGCCTCAAGATGCGGGCTGCAAGACGATTTTACCCTGCATCCTCCAACTTGC  
TGTTGTTCTACAACCTGAGCCAGGTTCCGGAAGCAGACTGTGCGCTTTTATCCGAGGGCAGCCCAGGG  
CGACGTAGAGCTTCTGTCTCACCTTCTGATCAAAGGGTCGCACTGTGGCGCGTCCCGTCGCATGCCTT  
GTGGGCGCTGGCTGGGGCTGGGCTCGCTGCATTGGGGCTCCCTCCCCTGGGGCGGACCTGCTCGCCC  
TGCAGGGAGTGGCTCGGCTGCGCTGTCGCAAGCGATCAGCAGCTGCTCGGAGCGCTGGTGTCCGATAT  
GGACGCCAGCAGTATCGGCGCAGCAGACCCGCACATGCTTGAGAACCTCCGACGCTGCCCTCGGCTCACA  
GCAGCTCAGAGGATTGCCCTCAACTCTCTCCTGGCGGGTGGGAAGACCTCCCTGGGCCCTCCCGTTCT  
GGACCTTGAAGGCCTCAAGCGCTGGGCCCTCTGGCTACCTACATCAGTCCCCATCTGTGGGCTCAAGT  
GCAGGAAGCTGTTGGCTTGGGATTTTTTGAAGCGTCGTTGCAAGCTGCCAGGTGGGGAGGCTGGGCCAG  
AGGGAGGCACGGTGTTCGTGACCAGTTTCTGGAATCAAAGACGAAACCCGTGCTCTCACGCCCTCGCC  
TTTCCACTGGGAACATAACCGCCGCGACACTGCGGGACGACCTTTTTCTCGTGCATATGATTGTGTGA  
GCTGGAATCTTGCTGGATGGATGATTTTTGCGCACTAACCTCGATACGCTCCTGCAGCACCTCCTCCC  
ACCGAATGCCAGCACGTGTTAAGGCTAAGTTGGCCAGATCTACCCCAAGGCTTGCCCGAGGACCAGC  
TGAGACTGATCACATCTCTGGTATATCTTTACAGCCGAACGGAAATAGGCCAGTGGTCCATCACTAGTCA  
GGACACTGTGATGGCTCTGCTGGCATCTGACGTGGCTCTCGAGAACCAGACAGAAGCCGTCTCCAGAAA  
TTCTTGGAGCATAATGGGACAGTGTCTGGCGCACTGCTCCTTGCCATTGGAGGGACAAGACTTTGCTGGA  
TGTCCCGCACCAAAATTCAGACGATTCACCCACAGGAGCTCAGACTGGCTGGAGCTCTGGATCTTAGTTC  
ATGTCCACAGAGCCGAAAAGACGTGTGTATACCAAGGCACACGAGACTTTCGGGAGTTCGGGACTCTG  
GCAGCTTATTACCGCTTGATGCGGCCATACCTGGGCGGGTCCCGGGAGGGGCACAGCCACCAAGCCCAG  
TGCCCCGGGTGGCGCCCCGTTGAAGAGCTGCGACATCTTGCACACGCAAACATTTCAATGGACATTGA  
TACTTTACCAGTCTGAACCCTCTGAACTGCAGAGCCTTGACGTAGGCAATGTACCCGCCCTCCTGGGG  
CACAACTAGGTGACCTTCAGAAAAGCCAGTCCCATCCTACCGTTAGGGCCTGGCTGAGATCCCTGAACA  
GTTCTACTCTGGGCGAGCTCGGTTTGGACGCCAGCCAACTAGCCGACTGGCCCCGCACACGGTACCCG  
GGGCCCCCATCTACCACCCACCAGTTTCTCACTTGGTACACACTTCCGGCCTGCCACTAACGACGCG  
CAGGCTTCAACTCCGGCTCCCTGTGGGCTCCTCTGGGCTACCTGCCCTGGCTATGGCGCTTCTTGT  
CCCTTCTGTGCCTGCTCCACTGGGGACCTGCATTCTGGTGAGCGTGGATTCTGTTGCCTCTGGCTGTT  
GGGATCCAGGGCAGCGCGCCGGGAAGACGGAGGTGCTCGACTCCGCCGCAGACCCTGGGGCTGACC  
GGACAGTTG

AGCGGACCGACGCGTACGCGGCCGCTCGAG - GFP Tag - GTTTAA

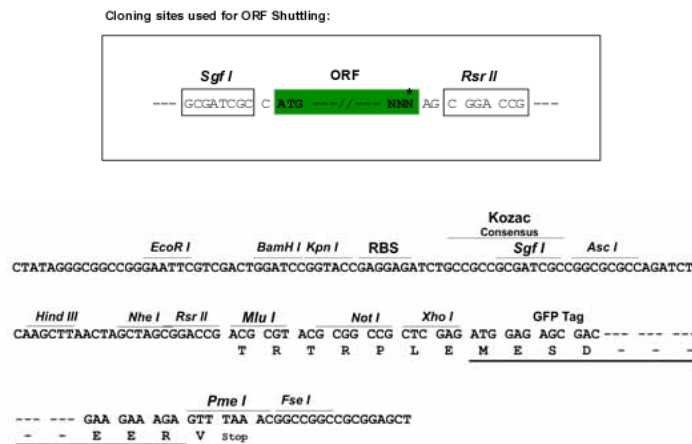
**Protein Sequence:** >RG220422 representing NM\_001025190  
 Red=Cloning site Green=Tags(s)

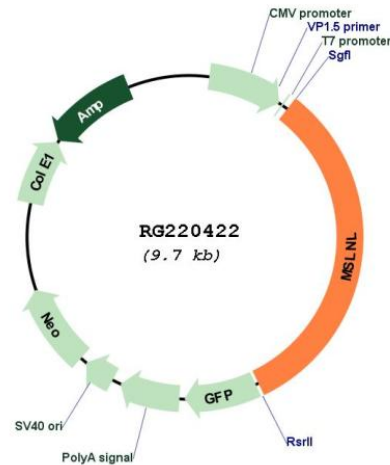
```
MEVSGDGPALHRLCTRALSASPGPTALGPSTFLPWDVSARMTSARRRTDVGPRVAFTYPTQLSPTRA
HRHLPVHTVTYPCTQLSPTRAHSCHLPMHTVTYPCTPSPTRAHSCHLPVHTVTYTCTLSPTHACLHASTV
SCLCCIPVHTVTYPCTLSPTCAHCHLHRARTHQPACAVYLCILSPTRAHCHLHVHTVTYMCVPACTH
SITPVHAPPDTSACAWAQAVHRWPVLWGSRSSSSMSGLKQTPMVGVTPPPWDPADAPAPAGTLTAHLIPG
ALQSSGLTLLLSLAHCSGPQAKVLSPGGLDASGANLWASANCSLLQGFWCQPASQLPRDQLSALIQRLA
LLQVPLQAWQVSGKECRGAGTGGRGDDPTCGKRGREVGWDWGLRPPQRGRAPTGCHEGSRVTRRERSAQL
SCLANLASRCGLQDDFTLHPPNLLL FYNLSQVREADCRAFIRRAAQGDVELLSHLPDQRVALWRAAVACL
VGAGWGWARCIGGSLPLGADLLALQGVARLRLSASDQQLL GALVCDMDASSIGAADPHMLENLRRCPLRT
AAQRIALNSLLAGGKTSLGPPGSWTLEGLQALPLATYISPHLWAQVQEAVLGGFFRSVVASCVGRLGQ
REARCFVTSFLESKTKPVSSRPRSTGNITAATLRDDLFLVHYDCAELESCLDGCILRTNLDLTLQHLLP
TECQHVVKAKLAQIYPQGLPEDQLRLITSLVYLYSRTEIGQWSITSQDTVMALLASDVALENQTEAVLQK
FLEHNGTVSGALLAIGGTRLCWMSPHQIQTIHPQELRLAGALDLSSCPQSRKDVLYTKAHETFGSSGTL
AAYYRLMRPYLGGSPGGAQPPSPVPPGGAPVEELRHLAHANISMDIDFTSLNPLELQSLDVGNTALLG
HNVDLQKARSHPTVRAWLRSLNSSTLQGLGLDASPTSPGPAHGTGPPSTTHQVHLHVHTSGLPTNDA
QASTSGSLWAPLGYLPLAMALPCSLCLLHWGTCILVSVDSVASGWLGSQSGAGKTEVLDSAGRPLGLT
GQL
```

SGPTRRRLE - GFP Tag - V

**Restriction Sites:** SgfI-RsrII

**Cloning Scheme:**



**Plasmid Map:**


**ACCN:** NM\_001025190

**ORF Size:** 3159 bp

**OTI Disclaimer:** The molecular sequence of this clone aligns with the gene accession number as a point of reference only. However, individual transcript sequences of the same gene can differ through naturally occurring variations (e.g. polymorphisms), each with its own valid existence. This clone is substantially in agreement with the reference, but a complete review of all prevailing variants is recommended prior to use. [More info](#)

**OTI Annotation:** This clone was engineered to express the complete ORF with an expression tag. Expression varies depending on the nature of the gene.

**Components:** The ORF clone is ion-exchange column purified and shipped in a 2D barcoded Matrix tube containing 10ug of transfection-ready, dried plasmid DNA (reconstitute with 100 ul of water).

**Reconstitution Method:**

1. Centrifuge at 5,000xg for 5min.
2. Carefully open the tube and add 100ul of sterile water to dissolve the DNA.
3. Close the tube and incubate for 10 minutes at room temperature.
4. Briefly vortex the tube and then do a quick spin (less than 5000xg) to concentrate the liquid at the bottom.
5. Store the suspended plasmid at -20°C. The DNA is stable for at least one year from date of shipping when stored at -20°C.

**RefSeq:** [NM\\_001025190.1](#), [NP\\_001020361.1](#)

**RefSeq Size:** 3162 bp

**RefSeq ORF:** 3161 bp

**Locus ID:** 401827

**Cytogenetics:** 16p13.3