

Product datasheet for **RG220357**

HECTD3 (NM_024602) Human Tagged ORF Clone

Product data:

Product Type:	Expression Plasmids
Product Name:	HECTD3 (NM_024602) Human Tagged ORF Clone
Tag:	TurboGFP
Symbol:	HECTD3
Mammalian Cell Selection:	Neomycin
Vector:	pCMV6-AC-GFP (PS100010)
E. coli Selection:	Ampicillin (100 ug/mL)



[View online »](#)

ORF Nucleotide Sequence:

>RG220357 representing NM_024602
 Red=Cloning site Blue=ORF Green=Tags(s)

TTTTGTAATACGACTCACTATAGGGCGGCCGGAATTCGTCGACTGGATCCGGTACCGAGGAGATCTGCC
 GCC**CGGATCGCC**

ATGGCGGGTCTGGCCCGGGCGCGGTGCTGGAGTCCCCCGGCAGCTGCTGGGCCGCGTGGCCTTCTTGG
 CAGAGGCAGCGCGGAGCCTCCGCGCCGGCGGCCGCTGCCAGCAGCGCTGGCTTTCGTGCCGCGAGAGGT
 GCTCTACAAGCTTTACAAGGACCCAGCGGGACCGTCGCGCGTGTCTGCGCGTGTGGGAGGCAGAGGGC
 CTGGGGTGTGCGTGTGGCGCCGACAGGCCAGCCCCGGTACCGGCTCCGGGCCCTCCGCGCCGCCCGCG
 ACAGCATTGAGCTCCGGCGCGGCCCTGCGTGCACACCGGCGAGGAGCTGTGCAATGGCCACGGGCT
 CTGGGTGAAGCTGACAAAGGAGCAGCTGGCAGAGCACCTGGGCGACTGCGGGCTGCAGGAAGGCTGGCTG
 CTGGTGTCCGCCCGCGGAGGGCGAGCCCGCTGGTACCCATCGACACTCCCAACCACCTCCAGCGGC
 AGCAGCAGCTCTTGGCGTGGATTATCGGCCGGTGTCTCAGGTGGGAACAGGTGGTGGACCTGACATACTC
 ACATCGCCTGGGATCGAGACCTCAGCCGCGAGAGGCATACGCAGAAGCTGTACAAAGGCTACTCTATGTA
 CCCCCGACATGGACCTACGAGTGCAGCAGGACCTGATCCAATTCTTGTATGACCACCTGGGCAAGGAGG
 ATGAGAACCTGGGTAGCGTGAAGCAGTATGTGGAGAGCATAGACGTTTCTCCTACACGGAGGAGTTCAA
 CGTGTCTGCCTGACAGACAGCAATGCCGATACCTACTGGGAGAGCGATGGGTCCAGTGCCAACACTGG
 GTACGGCTTACTATGAAGAAGGGCACCATTGTCAAGAAGCTGCTACTCACAGTGGATACCACAGATGACA
 ACTTTATGCCAAAGCGGGTGGTGGTCTATGGGGGTGAAGGGGACAACCTGAAGAAGCTGAGTGACGTGAG
 CATTGACGAGACCCTCATCGGGATGTCTGTCTGGAGGACATGACCGTCCACCTCCCGATCATCGAG
 ATCCGCATCGTGGAGTCCGAGATGATGGGATTGATGTTCTGCTCCGAGGGGTCAAGATCAAGTCATCTA
 GACAGCGGGAAGTGGGTTGAATGCAGACCTGTTCCAGCCAAGTCTGGTGGCATCCACGCGATGATA
 AGGCACCGACCCTGAAGTACTGTACCGCAGAGCTGTCTCCTGCAGAGATTTCATCAAGATCCTCGATAGT
 GTCTGCACACCTGGTACCTGCCTGGGACCACACTGGGCACCTTCAGTGAGATTAAGCAAGTGAAGC
 AGTTCTACTGCTGTCCCGCCAGCGCCAGGCCTGGTGGCTCAGTGCCTGCGTACTCTGAGAGCAGCAA
 GCCCAGCTTATGCCACGCCTATACATCAACCGCGTCTTGCCATGGAACACCGTGCCTGCCCTCTCGA
 GACCCTGCCTGCAAGAATGCAGTCTTACCAGGTATATGAAGGCCTCAAGCCCTCTGACAAATATGAAA
 AGCCCCTGGACTACAGGTGGCCATGCGCTATGACCAGTGGTGGGAGTGTAAATTTATTGCAGAAGGCAT
 CATTGACCAAGGGGTGGTTTCCGGGACAGCCTGGCAGATATGTCAGAAGAGCTGTGCCCTAGCTCAGCG
 GATACCCCGTGGCCCTGCCCTTCTTTGTACGCACAGCCAACAGGGCAATGGCACTGGTGGGCTCGGG
 ACATGTATGTACCAACCCTCCTGCCGAGACTTTGCCAAGTATGAATGGATCGGACAGCTGATGGGGC
 TGCCCTTCGGGGTAAGGAGTTCCTGGTCTGGCCCTGCCTGGTTTTGTGTGGAAGCAGCTTCTGGTGGAG
 GAGGTGAGCTGGAGCAAGGACTTCCAGCTGTGGACTCTGTGCTGGTGAAGCTCCTGGAAGTGTGGAAG
 GAATGGACAAGGAGACGTTTGAAGTTCAAGTTTGGGAAGGAACTAACATTACCACCTGACTGAGTGACCA
 ACAGGTGGTGGAGCTGATCCCTGGGGTGCAGGCATCGTCGTGGGATATGGGGACCGTTCTCGTTTCATC
 CAACTGGTCCAGAAGGCACGGCTAGAGGAGAGCAAGGAGCAGGTGGCAGCTATGCAGGCAGGTCTGCTGA
 AGGTGGTACCACAGGCTGTGCTGGACTTGTGACCTGGCAAGAGTTGGAGAAGAAAGTGTGTGGGGATCC
 AGAGGTCAGTGTGGATGCTCTGCGCAAGCTCACCCGGTTTGAGGACTTCGAGCCATCTGACTCGCGGGTG
 CAGTATTTCTGGGAGGCACTGAACAACCTCACCAACGAGGACCGGAGCCGCTTCTGCGCTTTGTACCGG
 GCCGAGTGCCTGCCAGCAGGATCTACATCTACCCAGACAAGCTGGGCTACGAGACCACAGCCGCT
 GCCCGAGTCTTCACTTGTCTCCAGCACCCTCTTCTGCCACACTATGCCAGTGCCAAGGTATGCGAGGAG
 AAGCTCCGCTATGCGGCCTACAAGTGCCTGGCCATCGACACTGACATGAGCCCTTGGGAGGAG

ACGCGTACGCGGCCGCTCGAG - GFP Tag - GTTTAA

Protein Sequence: >RG220357 representing NM_024602
Red=Cloning site Green=Tags(s)

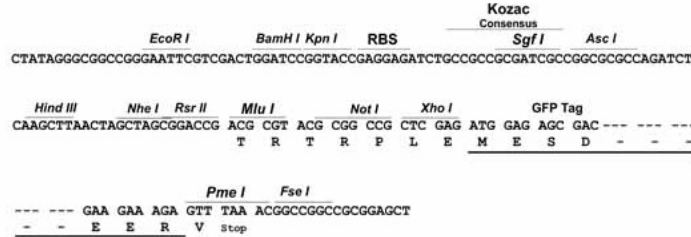
```
MAGPGPGAVLESPRQLLGRVRFLEAARSLRAGRPLPAALAFVPREVLKLYKDPAGPSRVLLPVWEAEG
LGLRVGAAGPAPGTGSGPLRAARDSIELRRGACVRTTGEELCNGHGLWVKLTKEQLAEHLGDCGLQEGWL
LVCRPAEGGARLVPIIDTPNHLQRQQQLFGVDYRPVLRWEQVVDLTYSHRLGSRPQPAEAYAEAVQRLLYV
PPTWTYECDEDLIHFLYDHLGKEDENLGSVKQYVESIDVSSYTEEFNVSCLTDSNADTYWESDGSQCQHW
VRLTMKKGTVKLLLTVDTTDDNFMPKRVVVYGGEGDNLKLSVSDVSDTLIGDVCVLEDMTVHLPPIE
IRIVECRDDGIDVRLRGVVKIKSSRQRELGLNADLFQPTSLVRYPRLEGTDPEVLYRRAVLLQRFIKILDS
VLHHLVPAWDHTLGTSEIKQVKQFLLLSRQRPGLVAQCLRDSESSKPSFMPRLYINRRLAMEHRACPSR
DPACKNAVFTQVYEGLKPSDKYEKPLDYRWPMRYDQWWECKFIAEGIIDQGGGFRDSLADMSEELCPSSA
DTPVPLPFFVRTANQNGTGEARDMYVPNPSCRDFAKYEWIGQLMGAALRGKEFLVLALPGFVWKQLSGE
EVSWSKDFPAVDSVLVKLLEVMEGMDKETFEFKFGKELTFTTVLSDQQVVELIPGGAGIVVGYGDRSRFI
QLVQKARLEESKEQVAAMQAGLLKVVPAVLDLLTWQELEKKVCGDPEVTDALRKLTRFEDFEPDSRV
QYFWEALNNTNEDRSRFLRFVTGRSRLPARIYIYPDKLGYETTDALPESSTCSSTLFLPHYASAKVCEE
KLRYAAYNCVAIDTDMSPWEE
```

TRTRPLE - GFP Tag - V

Restriction Sites: Sgfl-MluI

Cloning Scheme:

Cloning sites used for ORF Shutting:


ACCN: NM_024602

ORF Size: 2583 bp

OTI Disclaimer: The molecular sequence of this clone aligns with the gene accession number as a point of reference only. However, individual transcript sequences of the same gene can differ through naturally occurring variations (e.g. polymorphisms), each with its own valid existence. This clone is substantially in agreement with the reference, but a complete review of all prevailing variants is recommended prior to use. [More info](#)
OTI Annotation: This clone was engineered to express the complete ORF with an expression tag. Expression varies depending on the nature of the gene.

Components: The ORF clone is ion-exchange column purified and shipped in a 2D barcoded Matrix tube containing 10ug of transfection-ready, dried plasmid DNA (reconstitute with 100 ul of water).

Reconstitution Method:

1. Centrifuge at 5,000xg for 5min.
2. Carefully open the tube and add 100ul of sterile water to dissolve the DNA.
3. Close the tube and incubate for 10 minutes at room temperature.
4. Briefly vortex the tube and then do a quick spin (less than 5000xg) to concentrate the liquid at the bottom.
5. Store the suspended plasmid at -20°C. The DNA is stable for at least one year from date of shipping when stored at -20°C.

RefSeq: [NM_024602.6](#)

RefSeq Size: 3628 bp

RefSeq ORF: 2586 bp

Locus ID: 79654

UniProt ID: [Q5T447](#)

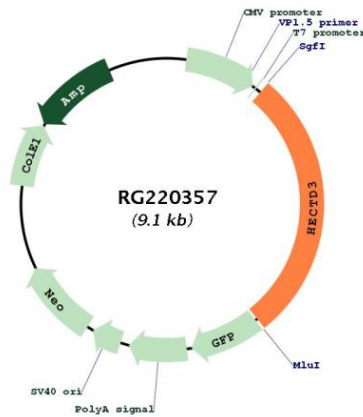
Cytogenetics: 1p34.1

Domains: HECT

Protein Families: Druggable Genome

Gene Summary: The protein encoded by this gene transfers ubiquitin from an E2 ubiquitin-conjugating enzyme to targeted substrates, leading to the degradation of those substrates. The encoded protein has been shown to transfer ubiquitin to TRIOBP to facilitate cell cycle progression, and to STX8. [provided by RefSeq, Dec 2012]

Product images:



Circular map for RG220357