

Product datasheet for **RG220345**

PRDM8 (NM_020226) Human Tagged ORF Clone

Product data:

Product Type:	Expression Plasmids
Product Name:	PRDM8 (NM_020226) Human Tagged ORF Clone
Tag:	TurboGFP
Symbol:	PRDM8
Synonyms:	EPM10; KMT8D; PFM5
Mammalian Cell Selection:	Neomycin
Vector:	pCMV6-AC-GFP (PS100010)
E. coli Selection:	Ampicillin (100 ug/mL)



[View online »](#)

ORF Nucleotide
Sequence:

>RG220345 representing NM_020226
 Red=Cloning site Blue=ORF Green=Tags(s)

TTTTGTAATACGACTCACTATAGGGCGGCCGGAATTCGTCGACTGGATCCGGTACCGAGGAGATCTGCC
 GCC**CGGATCGCC**

ATGGAGGATACTGGCATCCAGCGAGGCATCTGGGATGGAGATGCCAAGGCTGTCCAACAATGTCTGACAG
 ATATTTTTACCAGCGTTTACACCACCTGCGACATCCCTGAGAATGCTATATTTGGTCCCTGTGCTCTGAG
 CCATACTTCCCTATATGACAGCATAGCTTTCATAGCTCTCAAGTCTACTGACAAGAGAACAGTACCGTAT
 ATCTTTTCGGGTAGACACCTCAGCAGCAAATGGTTCCTCAGAAGGTCTCATGTGGCTGCGGTTGGTCCAAT
 CGGCCAGAGATAAGGAAGAGCAGAACCTTGAAGCCTACATAAAAAACGGACAGCTGTTCTACCGCTCTCT
 CCGCAGGATTGCCAAAGACGAGGAGTTACTAGTTTGGTACGGGAAAGAACTGACTGAGTTACTCTTGCTC
 TGCCCTCTAGATCCCACAACAAAATGAATGGTCTGCCCTTACACATGCCTGGAATGCAGCCAACGTT
 TCCAGTTTGAGTCCCCTATGTGGCGCATCTGCGTTTCCGCTGCCCAAGAGACTTACACGCGCTGATAT
 AAGTCCCCAAGACGAACAAGGCGCGGCGTGGGCACCAAGGACCACGGGGCGGCGGCGGCGGTGGCAAA
 GACCAGCAGCAGCAGCAGCAGGAGGCACCTTAGGCCCGGGTCCCAAGTTTTGCAAAGCCGGCCCCCTCC
 ACCACTACCCATCCCCCTCCCCGAAAGCAGCAACCCATCCGCTGCCGCCGGCGGAGCAGCGCGAAGCC
 ATCCACAGACTTCCACAACCTGGCCAGGGAGCTGGAAAATCCCAGGGGAGGCAGCAGCTGCTCCCGAGCC
 CAGAGCCTCAGCAGCGGTAGCGGCAGCGGCGGCGGCGGCCACCAGGAGGCGGAGCTGAGTCCCAGCG
 GCATCGCCACGGGCGGCGGCAAGGAAAGAGGAAATCCCAGGAGGCGGCGGAGGCGGCGGCGGTGGCGC
 TGGTCTGGTAGGGGGCCGGGCGCTTCGTAGAGCGGCCCTCCCGGCTCCAAGGAGGATCTGGTGTGC
 ACACCGCAGCAGTACCGAGCCTCGGGCAGCTACTTCGGCTGGAAGAGAACGGCCGCTCTTCGCGCCG
 CAAGTCCCAGAGCGGGCAGGGCAGCGAAGCGCAGCGCCTTCGTGGAGGTGAAGAAGGCTGCCCGCGCGCCAG
 CCTGCAGGAGGAGGGGACAGCCGACGGCGGGAGTCCCTCCGAGGACCAGGACGCTGGCGGCGGCGGC
 GGCTCCTCCACGCCCGCGGCGGCTCACCGGTGGGCGCCGAGAAGCTGCTGGCCCCGCGGCTGGGGGCC
 CGCTGCCAGCCGGCTCGAGGGCGGCGTCTGCGAGGGGCGAGCGCCTTCACTTCGGTGCCGAGCTGGG
 CAGCGCGGGCAGCACCAGCGGTGGGGCGGAACGGGCGCCGGGGCCGAGGCGGCGGGCGGGGCCAG
 GGGCGCGGTCCGACGAGCGCAAAGCGCCTTCTCGCAGCCAGCAGCTCTTCTCGCAGCTGTCCCGC
 TGGTGTGGGCCAGAAGCTGGGCGGCTCGAGCCATGCCACCCCGGACGGCGTGGGCCCCACCAGACT
 CTATCCCGCCGCGGACCCCTTAGCGGTGAAGCTCCAGGGGGCCGCGGACCTGAACGGAGTTGCGGG
 TCCTTCCGAGCGGCGGCGGCGGCTGCCTAAGCAGAGCCCTTCTGTACGCCACCGCCTTCTGGCCCA
 AGAGCTCCGCTGCCGCTGCAGCCGCGGCTGCGGCGGCGGCGGCGGCGGCTTGCAGCTGCAGCTGCCCTC
 GCGCTCACGCTGCTGCCGCCCTCCTTCACTCGCTGTGTCTGCCCGCGCAGAAGTGGTGCGCCAAGTGC
 AATGCCTCCTTCCGATGACCTCCGACCTGGTGTACCATATGAGGTGCGACCACAAAAAGGAGTATGCGA
 TGGAGCCCTTGGTGAAGCGGCGGCGAGAGGAGAACTCAAGTGCCCATCTGCAATGAGTCTTCAGGGA
 GCGCCACCACCTCTCCAGGCACATGACCTCGCATAAT

ACGCGTACGCGGCGGCTCGAG – GFP Tag – GTTTAA

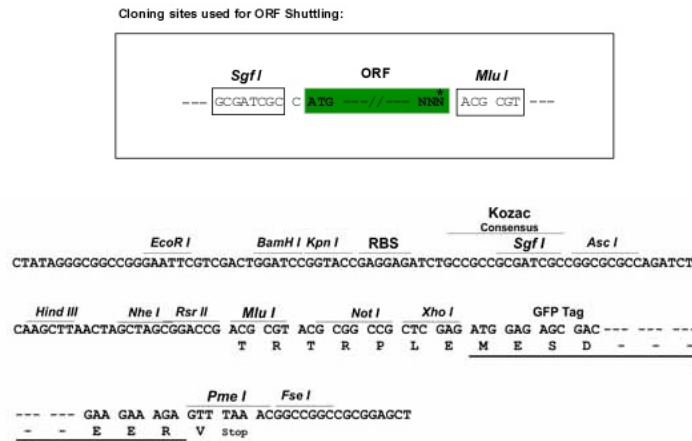
Protein Sequence: >RG220345 representing NM_020226
 Red=Cloning site Green=Tags(s)

MEDTGIQRGIWDGDAKAVQQCLTDIFTSVYTTCDIPENAIIFGPCVLSHTSLYDSIAFIALKSTDKRTVPY
 IFRVDTSAANGSSEGLMWRRLVQSARDKEEQNL EAYIKNGQLFYRSLRRIAKDEELLVWYGKELTELLLL
 CPSRSHNKMNGSSPYTCLCESQRFQFEFPYVAHLRFRCPKRLHSADISPQDEQGGVGT KDHGGGGGGGK
 DQQQQQEQEAPLGP GPKFCKAGPLHHYSPSPSSNP SAAAGSSAKPSTDFHNLARELENSRGGSSCSPA
 QLSSSGSGGGGGHQAELSPDGIATGGGKGKRKFPEEAAEGGGAGLVGGRGRFVERPLPASKEDLVC
 TPQQYRASGSYFGLEENGR LFAPPSPETGEAKRS AFVEVKKAARAASLQEEGTADGAVASEDQDAGGGG
 GSSTPAAASPVGAEKLLAPRPGGPLPSRLEGGSPARGSAFTSVPQLGSAGSTSGGGGTGAGAAGGAGGGQ
 GAASDERKSAFSQPARFSQLSPLVLGQKLGAL EPCHPADGVGPTRLYPAAADPLAVKLGGAADLNGGCG
 SLPSSGGGLPKQSPFLYATAFWPKSSAAAAAAAAAAGPLQLQLPSALTLLPPSFTSLCLPAQNWCAKC
 NASFRMTSDLVYHMRSHHKKEYAMEPLVKRRREEK LKCPICNESFRERHHL SRHMTSHN

TRTRPLE - GFP Tag - V

Restriction Sites: SgfI-MluI

Cloning Scheme:



ACCN: NM_020226

ORF Size: 2067 bp

OTI Disclaimer: Due to the inherent nature of this plasmid, standard methods to replicate additional amounts of DNA in E. coli are highly likely to result in mutations and/or rearrangements. Therefore, OriGene does not guarantee the capability to replicate this plasmid DNA. Additional amounts of DNA can be purchased from OriGene with batch-specific, full-sequence verification at a reduced cost. Please contact our customer care team at custsupport@origene.com or by calling 301.340.3188 option 3 for pricing and delivery.

The molecular sequence of this clone aligns with the gene accession number as a point of reference only. However, individual transcript sequences of the same gene can differ through naturally occurring variations (e.g. polymorphisms), each with its own valid existence. This clone is substantially in agreement with the reference, but a complete review of all prevailing variants is recommended prior to use. [More info](#)

OTI Annotation: This clone was engineered to express the complete ORF with an expression tag. Expression varies depending on the nature of the gene.

Components: The ORF clone is ion-exchange column purified and shipped in a 2D barcoded Matrix tube containing 10ug of transfection-ready, dried plasmid DNA (reconstitute with 100 ul of water).

Reconstitution Method:

1. Centrifuge at 5,000xg for 5min.
2. Carefully open the tube and add 100ul of sterile water to dissolve the DNA.
3. Close the tube and incubate for 10 minutes at room temperature.
4. Briefly vortex the tube and then do a quick spin (less than 5000xg) to concentrate the liquid at the bottom.
5. Store the suspended plasmid at -20°C. The DNA is stable for at least one year from date of shipping when stored at -20°C.

RefSeq: [NM_020226.3](#), [NP_064611.3](#)

RefSeq Size: 4118 bp

RefSeq ORF: 2070 bp

Locus ID: 56978

UniProt ID: [Q9NQV8](#)

Cytogenetics: 4q21.21

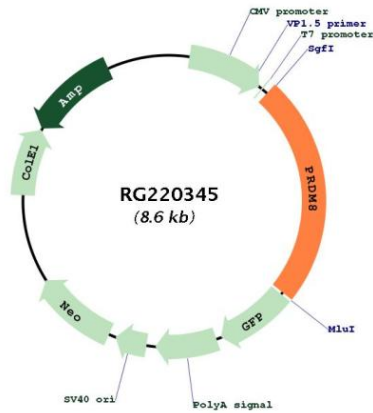
Domains: SET

Protein Families: Druggable Genome, Transcription Factors

Gene Summary:

This gene encodes a protein that belongs to a conserved family of histone methyltransferases that predominantly act as negative regulators of transcription. The encoded protein contains an N-terminal Su(var)3-9, Enhancer-of-zeste, and Trithorax (SET) domain and a double zinc-finger domain. Knockout of this gene in mouse results in mistargeting by neurons of the dorsal telencephalon, abnormal itch-like behavior, and impaired differentiation of rod bipolar cells. In humans, the protein has been shown to interact with the phosphatase laforin and the ubiquitin ligase malin, which regulate glycogen construction in the cytoplasm. Alternative splicing results in multiple transcript variants. [provided by RefSeq, Feb 2016]

Product images:



Circular map for RG220345