

Product datasheet for **RG220296**

BTNL9 (NM_152547) Human Tagged ORF Clone

Product data:

Product Type:	Expression Plasmids
Product Name:	BTNL9 (NM_152547) Human Tagged ORF Clone
Tag:	TurboGFP
Symbol:	BTNL9
Synonyms:	BTN3; BTN8; VDLS1900
Mammalian Cell Selection:	Neomycin
Vector:	pCMV6-AC-GFP (PS100010)
E. coli Selection:	Ampicillin (100 ug/mL)



[View online »](#)

ORF Nucleotide Sequence:

>RG220296 representing NM_152547
 Red=Cloning site Blue=ORF Green=Tags(s)

TTTTGTAATACGACTCACTATAGGGCGGCCGGAATTCGTCGACTGGATCCGGTACCGAGGAGATCTGCC
 GCC**CGGATCGCC**

ATGGTGGATCTCTCAGTCTCCCGGACTCCTTGAAGCCAGTATCGCTGACCAGCAGTCTTGTCTTCTCA
 TGCACCTCCTCCTCCTCAGCCTGGGGAGCCGAGCTCAGAGGTCAAGGTGCTAGGCCCTGAGTATCCCAT
 CCTGGCCCTCGTCGGGGAGGAGGTGGAGTTCCTGTCACCTATGGCCACAGCTGGATGCCAGCAAATG
 GAGATCCGCTGGTTCCGGAGTCAGACCTCAATGTGGTACACCTGTACCAGGAGCAGCAGGAGCTCCCTG
 GCAGGCAGATGCCGGCTTCCGGAACAGGACCAAGTTGGTCAAGGACGACATCGCCTATGGCAGCGTGGT
 CCTGCAGTTCACAGCATCATCCCCTCTGACAAGGGCACATATGGCTGCCGCTTCCACTCCGACAACCTC
 TCTGGCGAAGCTCTCTGGAACTGGAGGTAGCAGGGCTGGGCTCAGACCCTCACCTCTCCCTTGAGGGCT
 TCAAGGAAGGAGGCATTCAGCTGAGGCTCAGATCCAGTGGCTGGTACCCCAAGCCTAAGGTTTCAGTGGAG
 AGACCACAGGGACAGTGCCTCCAGAGTTTGAAGCCATCGTCTGGGATGCCAGGACCTGTTTCAGT
 CTGGAAACATCTGTGGTTGTCCGAGCGGGAGCCCTCAGCAATGTGTCCGCTCCATCCAGAATCTCCTCT
 TGAGCCAGAAGAAAGAGTTGGTGGTCCAGATAGCAGACGTGTTTCGTACCCGGAGCCTCTCGCTGGAAGAG
 CGCGTTTCGTCGCGACCCTGCCGCTGCTGTTGGTCTCGCGCGCTGGCGCTGGGCGTCTCCGGAAGCAG
 CGGAGAAGCCGAGAAAAGCTGAGGAAGCAGGCGGAGAAGAGACAAGAACTACTGCAGAGCTGGAAA
 AGCTTCAGACAGAGCTTGACTGGAGACGGGCTGAAGGCCAGGCTGAGTGGAGAGCAGCCAAAAATATGC
 AGTGGATGTGACGCTGGACCCGGCTCGGCGCACCCAGCCTGGAGGTGTGGAGGATGGCAAGAGCGTG
 TCTTCCCGCGGGCGCCAGGCCCGGCGCTGGCCACCCGACGCGTTCTCGGAGCAGACGTGCCGCG
 TGAGCTGGAGCGGTTCTCCCGCGCCCACTACTGGAGGTGCACGTGGGCGCGCCAGCCGCTGGTT
 CCTGGGCGCTGCCTGGCCGCGGTGCCGCGCGGGCCCTGCGCGCTGAGCCCTGCGGCGGCTACTGG
 GTGCTGGGCTGTGGAACGGCTGCGAGTACTTCGTCTGGCCCCACCCGCTCGCGCTCACCTGCGCG
 TGCCCCGCGGCGCTGGGCTTCTCTGGACTACGAGGCCGGAGAGCTGTCTTCTTCAACGTGTCCGA
 CGGCTCCACATCTTACCTTCCACGACACCTTCTCGGCGCGCTCTGTGCGTACTTCAGGCCAGGGCC
 CACGACGGCGGAACATCCGGATCCCCTGACCATCTGCCGCTGCCGTTAGAGGGACGGGCTCCCCG
 AAGAGAACGACAGTGACACCTGGCTACAGCCCTATGAGCCGCGGACCCCGCCCTGGACTGGTGG

ACGCGTACGCGGCCGCTCGAG - GFP Tag - GTTTAA

Protein Sequence:

>RG220296 representing NM_152547
 Red=Cloning site Green=Tags(s)

MVDLSVSPDSLKPVSLSLTVFLMHLVLPQGPSPSEVKVLGPEYPIALVGEVEFPCHLWPQLDAQQM
 EIRWFRSQTFFNVVHLYEQQELPGRQMPAFRNRTKLVKDDIAYGSVVLQLHSIIPSDKGTGCRFHSDFN
 SGEALWELEVAGLGSDPHLSLEGFKEGGIQLRLRSSGWYPKPKVQWRDHQGCCLPPEFEAIWDAQDLFS
 LETSVVVRAGALSNVSVSIQNLVLSQKELVVQIADVFVPGASAWKSAFVATLPLLLVLAALALGVLKQ
 RRSREKLRKQAEKRQEKLTAELEKLTQELDWRAEGQAEWRAAQKYAVDVTLDPASAHPSLEVEDGKSV
 SSRGAPPGPAPGHPQRFSEQTCALSLERFSAGRHYWEVHVGRRSRWFLGACLAAPRAGPARLSPAAGYW
 VLGLWNGCEYFVLAPHRVALTLRVPPRRLGVFLDYEAGELSFVSDGSHIFTFHDTFSGALCAYFRPRA
 HDGGEHPDPLTICPLPVRGTGVPEENDSTWLVQPYEPADPALDWW

TRTRPLE - GFP Tag - V

Restriction Sites:

Sgfl-MluI

Cloning Scheme:


ACCN: NM_152547

ORF Size: 1605 bp

OTI Disclaimer: The molecular sequence of this clone aligns with the gene accession number as a point of reference only. However, individual transcript sequences of the same gene can differ through naturally occurring variations (e.g. polymorphisms), each with its own valid existence. This clone is substantially in agreement with the reference, but a complete review of all prevailing variants is recommended prior to use. [More info](#)

OTI Annotation: This clone was engineered to express the complete ORF with an expression tag. Expression varies depending on the nature of the gene.

Components: The ORF clone is ion-exchange column purified and shipped in a 2D barcoded Matrix tube containing 10ug of transfection-ready, dried plasmid DNA (reconstitute with 100 ul of water).

Reconstitution Method:

1. Centrifuge at 5,000xg for 5min.
2. Carefully open the tube and add 100ul of sterile water to dissolve the DNA.
3. Close the tube and incubate for 10 minutes at room temperature.
4. Briefly vortex the tube and then do a quick spin (less than 5000xg) to concentrate the liquid at the bottom.
5. Store the suspended plasmid at -20°C. The DNA is stable for at least one year from date of shipping when stored at -20°C.

RefSeq: [NM_152547.3](#)

RefSeq Size: 3479 bp

RefSeq ORF: 1608 bp

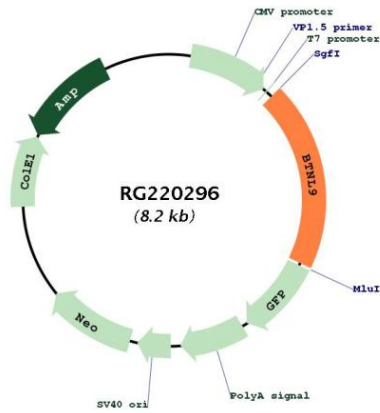
Locus ID: 153579

UniProt ID: [Q6UXG8](#)

Cytogenetics: 5q35.3

Protein Families: Druggable Genome, Transmembrane

Product images:



Circular map for RG220296