

Product datasheet for **RG220294**

TCF12 (NM_207040) Human Tagged ORF Clone

Product data:

| | |
|---------------------------|---|
| Product Type: | Expression Plasmids |
| Product Name: | TCF12 (NM_207040) Human Tagged ORF Clone |
| Tag: | TurboGFP |
| Symbol: | TCF12 |
| Synonyms: | bHLHb20; CRS3; HEB; HsT17266; HTF4; p64; TCF-12 |
| Mammalian Cell Selection: | Neomycin |
| Vector: | pCMV6-AC-GFP (PS100010) |
| E. coli Selection: | Ampicillin (100 ug/mL) |



[View online »](#)

ORF Nucleotide Sequence:

>RG220294 representing NM_207040
 Red=Cloning site Blue=ORF Green=Tags(s)

TTTTGTAATACGACTCACTATAGGGCGGCCGGAATTCGTCGACTGGATCCGGTACCGAGGAGATCTGCC
 GCC**CGCATCGCC**

ATGTATTGTGCTTATCCTGTCCCTGGAATGGGCAGCAATTCCTTTGATGTATTACTACAATGGGAAAACGG
 TATATGCACCATCCCAAATTCAGATGATTTCAACCGTGAATCTCCTAGTTATCCATCTCCTAAGCCACC
 AACCAAGTATGTTTCGCTAGCACTTTCTTTATGCAAGATGGGACCCACAATTCCTTCTGACCTTTGGAGTTCA
 TCAAATGGGATGAGCCAGCCTGGTTTTGGTGGAATTCGGGGACCTCCACTTCCCACATGTCTCAATCCA
 GTAGTTATGGCAACCTTCATTCACATGACCGCTTGAGTTATCCTCCACACTCAGTTTCACCAACAGACAT
 AAACACGAGTCTCCACCAATGTCCAGCTTTCATCGCGGCAGTACCAGCAGTTACCTTACGTTGCTGCC
 TCACACACTCTCCCATCAATGGATCAGACAGCATTCTAGGAACCAGAGGGAATGCTGCTGGAAGCTCAC
 AGACAGGTGATGCACTTGAAAGGCTTTGGCATCTATTTATTCTCCTGACCATACCAGCAGTAGTTTTCC
 GTCAAATCCATCAACACCAGTTGGATCACCTTCACCTCTCACAGTACCAGTACGTTGCGCAAGACCTGGA
 GGCAAGCACCTTCATCCCAAGCTATGAAAACACTCACTCCACTCCCTGCAGTCTCGAATGGAGGATCGTT
 TAGACAGACTGGATGATGCAATCCATGTCTGCGGAACCATGCTGTGGGACCTTCCACCAGTTTGCCTGC
 TGGTCACAGTGATATACATAGTTTATTGGGACCATCCCATAATGCACCAATTGGAAGCCTCAATCAAAC
 TATGGAGGATCAAGCCTTGTGCAAGCAGTCGATCAGCTTCAATGGTTGGAACCTCATCGGGAAGACTCTG
 TCAGTCTCAATGGCAATCATTAGTCTGTCTAGTACAGTCACTACTTCAAGCACAGACCTGAACCATAA
 AACACAAGAAAATATAGAGGTGGCTTGCAAAGTCAGTCTGGAAGTGTGTTACAACAGAAAATCAAGACT
 GAAAACAAGAAAAGGATGAAAACCTTCATGAACCTCCTTCATCAGATGACATGAAGTCAAGTATGAA
 CCTCCCAAAAAGATATCAAGTTTCATCTAGAGCAGAACAAGCAGTACTAATGAAGATGAGGATTTGAA
 CCGTGAACAGAAGATAGAAAGGGAGAAGGAGAGCGGATGGCTAACAATGCCAGAGAACGCTTACGCGTG
 CGGGATATTAATGAAGCATTCAAAGAGCTTGGCCGAATGTGTCAGCTTCACTTGAAGAGTAAAAACCC
 AAACAAAACCTCTATTCTTCATCAAGCCGTGGCAGTCATCCTTAGTCTAGAACAGCAAGTCAGAGAGAG
 GAACCTTAACCCCAAAGCAGCCTGCCTAAGAGAAGGGAAGAAGAAAAGTTTCTGCCGATCGGCAGAG
 CCGCAACCACTGCCAGGAACCCATCCTGGGCTTAGTGAAACTACCAACCTATGGGTATATG

AG**CGGACCG**ACGCGTACGCGGCCGCTCGAG - GFP Tag - GTTAA

Protein Sequence:

>RG220294 representing NM_207040
 Red=Cloning site Green=Tags(s)

MYCAYVPMGMSNSLMYYNKGKTVYAPSPNSDDFNRESYSPKPTSMFASTFFMQDGNHSSDLWSS
 SNGMSQPGFGGILGTSTSHMSQSSSYGNLHSHDRLSYPPHSVSPDINTSLPPMSSFHRGSTSSSPYVAA
 SHTPPINGSDSILGTRGNAAGSSQTGDALGKALASISYSPDHTSSSFSPNPSTPVGSPSPLTGTSQWPRPG
 GQAPSSPSYENSLHSLQSRMEDRLDRLDDAIHVLRNHAVGPSTSLPAGHSDIHSLGSPSHNAPIGSLNSN
 YGGSSLVASSRSASMGVTHREDSVSLNGNHSVLSSTVTTSSDNLNHKTQENYRGGQLSQSGTVVTEIKT
 ENKEKDENLHEPPSSDDMKSDDESSQDKIVSSRGRTSSTNEDEDLNPEQKIEREKERRMANNARERLRV
 RDINEAFKELGRMCQLHLKSEKQTKLLILHQAVAVILSLEQQVREERNLNPKAACLRREEEKVSAVSAE
 PPTTLPGTHPGLSETTNPNGHM

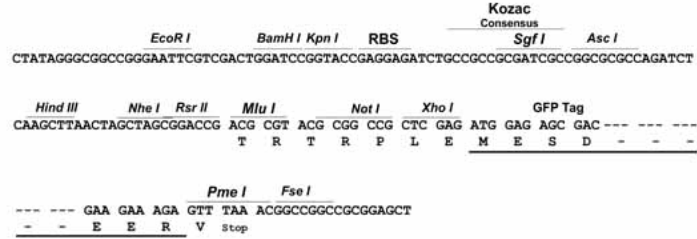
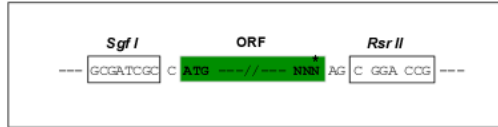
SGP**TRRRLE** - GFP Tag - V

Restriction Sites:

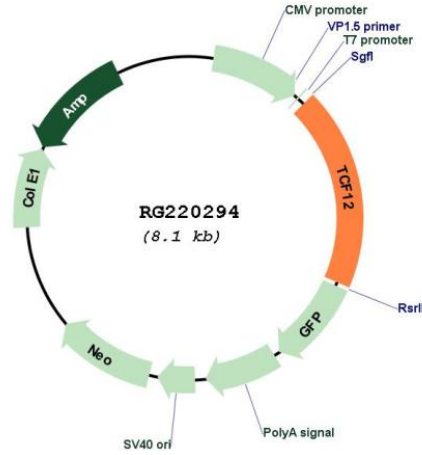
Sgfl-RsrII

Cloning Scheme:

Cloning sites used for ORF Shuttling:



Plasmid Map:



ACCN: NM_207040
 ORF Size: 1536 bp

| | |
|-------------------------------|--|
| OTI Disclaimer: | <p>Due to the inherent nature of this plasmid, standard methods to replicate additional amounts of DNA in E. coli are highly likely to result in mutations and/or rearrangements. Therefore, OriGene does not guarantee the capability to replicate this plasmid DNA. Additional amounts of DNA can be purchased from OriGene with batch-specific, full-sequence verification at a reduced cost. Please contact our customer care team at custsupport@origene.com or by calling 301.340.3188 option 3 for pricing and delivery.</p> <p>The molecular sequence of this clone aligns with the gene accession number as a point of reference only. However, individual transcript sequences of the same gene can differ through naturally occurring variations (e.g. polymorphisms), each with its own valid existence. This clone is substantially in agreement with the reference, but a complete review of all prevailing variants is recommended prior to use. More info</p> |
| OTI Annotation: | <p>This clone was engineered to express the complete ORF with an expression tag. Expression varies depending on the nature of the gene.</p> |
| Components: | <p>The ORF clone is ion-exchange column purified and shipped in a 2D barcoded Matrix tube containing 10ug of transfection-ready, dried plasmid DNA (reconstitute with 100 ul of water).</p> |
| Reconstitution Method: | <ol style="list-style-type: none">1. Centrifuge at 5,000xg for 5min.2. Carefully open the tube and add 100ul of sterile water to dissolve the DNA.3. Close the tube and incubate for 10 minutes at room temperature.4. Briefly vortex the tube and then do a quick spin (less than 5000xg) to concentrate the liquid at the bottom.5. Store the suspended plasmid at -20°C. The DNA is stable for at least one year from date of shipping when stored at -20°C. |
| RefSeq: | NM_207040.2 |
| RefSeq Size: | 3995 bp |
| RefSeq ORF: | 1539 bp |
| Locus ID: | 6938 |
| UniProt ID: | Q99081 |
| Cytogenetics: | 15q21.3 |
| Protein Families: | Druggable Genome, Transcription Factors |
| Gene Summary: | <p>The protein encoded by this gene is a member of the basic helix-loop-helix (bHLH) E-protein family that recognizes the consensus binding site (E-box) CANNTG. This encoded protein is expressed in many tissues, among them skeletal muscle, thymus, B- and T-cells, and may participate in regulating lineage-specific gene expression through the formation of heterodimers with other bHLH E-proteins. Several alternatively spliced transcript variants of this gene have been described, but the full-length nature of some of these variants has not been determined. [provided by RefSeq, Jul 2008]</p> |