

## Product datasheet for **RG220292**

### **MCAF1 (ATF7IP) (NM\_018179) Human Tagged ORF Clone**

#### Product data:

Product Type:	Expression Plasmids
Product Name:	MCAF1 (ATF7IP) (NM_018179) Human Tagged ORF Clone
Tag:	TurboGFP
Symbol:	MCAF1
Synonyms:	AM; ATF-IP; MCAF; MCAF1; p621
Mammalian Cell Selection:	Neomycin
Vector:	pCMV6-AC-GFP (PS100010)
E. coli Selection:	Ampicillin (100 ug/mL)
ORF Nucleotide Sequence:	>RG220292 representing NM_018179 Red=Cloning site Blue=ORF Green=Tags(s)

TTTTGTAATACGACTCACTATAGGGCGGCCGGAATTCGTCGACTGGATCCGGTACCGAGGAGATCTGCC  
GCC**CGATCGCC**

ATGGACAGTTTGAAGAACCCTCAGAAAAAGTCTTTAAGGCTCGAAAAACGATGAGAGTGAGTGATCGTC  
AGCAACTGAAGCAGTGTACAAGGTCAAAGAAGAACTGTTGAAAACGATGTCAAGCTGTTAAATGGCAA  
CCATGAAAATGGAGATTTGGACCAACCTCACCTTTGGAAAACATGGATTACATTAAGACAAGGAAGAG  
GTGAATGGCATTGAAGAGATTTGTTTGTATCCTGAAGGAAGTAAAGCAGAATGGAAGGAAACACCCTGTA  
TCCTAAGTGTTAATGTAACCAAGCAGGATGATGATTTAAATTGTGAACCTTTGTCTCCCATATAAT  
AACTCCAGAACCAGTCTCTAACTGCCTGCTGAACAGTTTCTGGTGATCCAGCCCTGGTGATCTGGAT  
GCCGGAGATCCAGCTCCGGAGTACTGGCTCTGGTGATCCACCTCTGGTGATCCACCTCTAGCGAGC  
CCTCCTCTAGTGATGCTGCCTCTGGTGATGCAACCTCTGGTGATGCCCTTCTGGTGATGTGCCCTGG  
TGATGCCACCTCTGGTGATGCCACTGCTGATGATCTCTCCTCTGGTGATCCACCTCTAGTGATCCATC  
CCAGGTGAACCGGTCCCTGTTGAACCAATTTCTGGTGATTGTGCCGCTGATGATAGCCTCTAGTGAAA  
TAACTTCTGTTGATCTGGCTTCTGGAGCACCAGCTTCCACTGATCCAGCCTCTGATGATCTGGCCTCTGG  
TGATCTATCCTCTAGTGAACCTGGCCTCTGATGATCTGGCCACTGGTGAACCTGGCCTCTGATGAGCTGACT  
TCTGAATCAACCTTTGATCGTACCTTTGAACCAAGTCTGTACCAGTTTGTGAACCACTCTGAAATTTG  
ACAATATAGAACCAAGTAGCAATAAAGATGATGATTTTCTGAAAAAATGGAGCTGATGAAAAATTAGA  
GCAAAATCAGAGTAAAGACTCATTGGATGAGAAAAATAAAGCTGATAATAATATTGATGCTAATGAAGAA  
ACTCTAGAAACAGATGATAACAATTTTGTTCAGATCGACCTCCTGAAAATGAAAAGAAGGTAGAGGAAG  
ATATTATCACAGAGCTTGTCTTGGAGAAGATGCTATATCTAGCAGTATGGAAAATGACCAAGGTGAAAA  
GAATGAAGATGAACTTCTGCAGATCTGTAGAAACGATTAATGAAAATGTTATTGAAGATAACAAAAGT  
GAGAATATCTTAGAAAAACAGACTCTATGGAGACAGATGAAATCATTCTATTTTGGAAAAGCTTGCAC  
CTTCTGAGGATGAACTTACTTGTCTTTCTAAAACATCTCTCCTTCCAATCGATGAGACAAATCCAGATTT  
GGAAGAGAAAATGAAAGTTCTTTTGGTTCACCATCTAAACAAGAAAGTAGTGAGAGTTTGCCAAAAGAA



[View online »](#)

GCCTTTCTGGTCCTCTCTGATGAAGAGGATATTTCCGGTGAAAAAGATGAGTCTGAAGTTATATCGCAAA  
ATGAAACGTGCTCTCCAGAAGTAGAAAGTAATGAAAAGGACAACAGACCTGAGGAAGAAGAGCAAGTAAT  
ACATGAAGATGATGAAAGACCTTCTGAGAAAAATGAATTTCTAGACGAAAACGTTCTAAATCAGAAGAC  
ATGGACAATGTACAGTCTAAACGTGTCGATATATGGAAGAAGAATATGAGGCAGAAATTTCAAGTAAAGA  
TTACAGCCAAAGGAGACATTAACCAGAACTTCAAAAGGTTATACAGTGGTTGCTGGAAGAAAAATTGTG  
TGCGCTGCAGTGTGCTGTATTTGATAAGACTTTGGCAGAATTGAAAACACGAGTGGAAAAAGATTGAATGT  
AACAGAAGGCATAAAACAGTTCTCACTGAACTACAGGCCAAGATAGCCAGGTTAACCAAACGCTTTGAAG  
CAGCCAAAGAAGATCTTAAGAAAAGACATGAACATCCACCCAACCCACCAGTATCACCAGGAAAAACTGT  
AAATGATGTCAACAGCAATAATAACATGTCTTACAGAAATGCAGGCACAGTGAGACAGATGCTGGAGTCC  
AAAAGAAATGTAAGCGAGAGTGCACCACCATCCTTTCAAACCTCTGTGAATACAGTATCTTCAACCAATC  
TTGCTACTCCTCCAGCAGTTGTGAGTAGTCAACCTAAATTGCAGACTCCAGTGACTTCGGGTTCCCTCAC  
AGCAACGTGAGTCTTCTGACCCCAATACAGCTACTGTAGTTGCTACTACTCAGGTGCCTAGTGGAAAT  
CCCCAGCTACAATCTCTTTACAGCCTTTGCCAGTGATTTGCATGTACCTGTTGCAGTATCCTCCCAGC  
CTCAGCTTCTACAGAGCCATCCAGGGACTTTGGTGACTAATCAACCATCTGGCAATGTTGAATTCATTTT  
TGTGCAAAGCCCACCTACAGTGAAGTGGTCTTACCAAAAAATCCAGTATCCTTGCCATCCTTGCCAAATCCC  
ACTAAACCAAACAACGTTCTCTTCTGTGCCAGTCTAGTATTCAAAGGAACCCCTACTGCCAGTGTGCAC  
CATTGGGAACAACACTTGCTGTGCAAGGCTGTTCCAACAGCACACTCTATTGTACAAGCCACAAGGACTTC  
TTTACCCACAGTGGGCCATCAGGACTCTATAGTCCATCAACTAATCGAGGTCCTATACAGATGAAAATT  
CCAATTTCTGCATTTAGTACTTCGTCTGCTGCAGAACAGAACAGCAATACCACCCCAAGAATTGAAAACC  
AGACAAACAAAACAATAGATGCTTCTGTGAGTAAAGAAAGCAGCTGATAGCACATCACAGTGTGAAAAAGC  
CACTGGCAGTGATTCAAGTGGTGTCTTATGATCTCACAATGGATGATGAAGAGAGTGGAGCTTCACAAGAC  
CCAAAAAACTAAATCACACTCCTGTATCAACCATGAGTTCTTCTCAGCCTGTGTACGACCATTGCAAC  
CCATAACAACAGCACCGCCTCTTCAACCATCTGGGGTGCCAACAAGTGGACCATCTCAGACCACCATACA  
CTTACTACCTACAGCTCCAACCTACCGTGAATGTAAACACATCGTCCAGTAACTCAGGTGACCACAAGACTC  
CCTGTACCAAGAGCTCCTGCAAACCCAGGTGGTTTATACAACCTCTTCTGACCCACCAGCTCAGGCTC  
CCTTGCGAGGAACTGTTATGCAAGGCTCCTGCTGTTGCGCAGGTCAATCCCCAAAATAGTGTACAGTTG  
AGTGCCTCAAACAACCACATATGTTGTAACAATGGACTAACCCCTGGGATCAACAGGACCTCAGCTCACA  
GTGCATCACCGACCACCACAAGTGCATACTGAGCCCCACGCCCCGTGCACCCAGCACCTTACCAGAAG  
CTCCACAACCACAGCGTCTGCCCCAGAAGCTGCCAGCACATCTCTGCCTCAGAAGCCACACTTGAAGTT  
AGCACGCGTTCAGAGTCAAAATGGCATAGTACTGTATGGAGTGTCTGGAGGTGGATCGAAGCTGTGCC  
ACTGTTGATAGCTACCATCTCTATGCTTACCATGAGGAACCCAGTGCCACTGTGCCCTCACAATGGAAAA  
AGATTGGGGAAGTCAAGGCACTTCCCTTGCCCATGGCATGACTCTCACCCAGTTTGTATCTGGTAGCAA  
ATACTACTTTGCAGTACGAGCCAAGGATATTTATGGACGTTTTGGGCCTTCTGTGATCCTCAGTCAACA  
GATGTGATCTCTTCTACCCAGAGCAGT

AGCGGACCGACGCGTACGCGGCCGCTCGAG - GFP Tag - GTTTAA

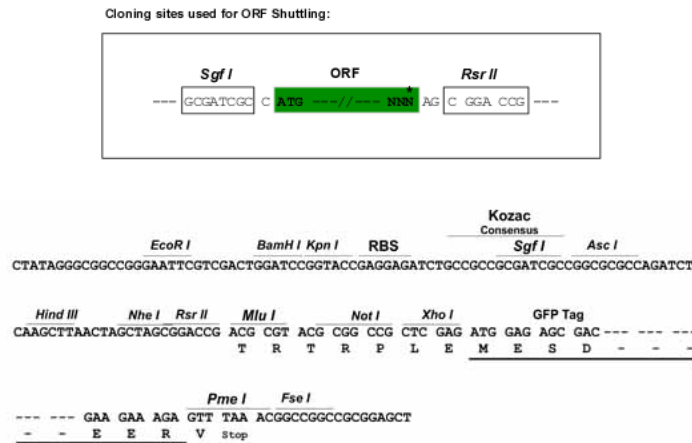
**Protein Sequence:** >RG220292 representing NM\_018179  
 Red=Cloning site Green=Tags(s)

MDSLEEPQKKVFKARKTMRVSDRQQLAEVYKVKKEELLKTDVKLLNGNHENGDLDPSTPLENMDYIKDKEE  
 VNGIEEICFDPEGSKAEWKETPCILSVNVKNKQDDDLNCEPLSPHNITPEPVSKLPAEPVSGDPAPGDL  
 AGDPASGVLASGDSTSGDPTSSEPPSSDAASGDATSGDAPSGDVSPGDATSGDATADDLSSGDPTSDDPI  
 PGPEVPVEPISGDCAADDIASSEITSVDLASGAPASTDPASDDLASGDLSSSELASDDLATGELASDELT  
 SESTFDRTFEPKSVPVCEPVPEIDNIEPSSNKDDDFLEKNGADEKLEQIQSKDSLDEKNKADNNIDANEE  
 TLETDTTICSDRPPENEKKVEEDIITELALGEDAIISSMEIDQGEKNEDETSADLVETINENVIEDNKS  
 ENILENTDSMETDEIIPILEKLAPSEDELTCFSKTSLLPIDETNPDLSEKMESSFGSPSKQESSESLPKE  
 AFLVLSDEEDISGEKDESEVISQNETCSPEVESNEKDNRPPEEEQVIHEDDERPSEKNEFSRRKRKSKSED  
 MDNVQSKRRRYMEEYEAEFQVKITAKGDINQKLQKVIQWLLEEKLCALQCAVFDKTLAELKTRVEKIEC  
 NKRHKTVLTELQAKIARLTKRFEAAKEDLKKRHEHPPNPPVSPGKTVNDVNSNNNMSYRNAGTVRQML  
 KRNVSSEAPPSFQTPVNTVSSTNLVTPPAVSSQPKLQTPVTSGLTATSVLPAANTATVATTQVPSGN  
 PQPTISLQPLPVILHVPVAVSSQPQLLQSHPGTLVTNQPSGNVEFISVQSPPTVSGLTKNPVSLPSLPNP  
 TKPNNVPSVSPSIQRNPTASAAPLGTTLAVQAVPTAHSIVQATRTSLPTVGPGLYSPSTNRGPIQMKI  
 PISAFSTSSAAEQSNTPRIENQTNKIDASVSKKAADSTSQCCKATGSDSSGVIDLTMDEESGASQD  
 PKKLNHTPVSTMSSQVSRPLQPIQPAPPLQPSGVPTSGPSQTTIHLPTAPTTVNVTHRPVTQVTTRL  
 PVPRAPANHQVVYTTLPAPPAQAPLRGTVMQAPAVRQVNPQNSVTVRVPQTTTYVNNGLTLGSTGPQLT  
 VHRPPQVHTEPRPVHPAPLPEAPQPRLPPEAASTSLPQKPHLKLARVQSQNGIVLSWSVLEVDKSCA  
 TVDSYHLAYHEEPSATVPSQWKKIGEVKALPLPMACTLTQFVSGSKYYFAVRAKDIYGRFGPFCDPQST  
 DVISSTQSS

SGPTRRRLE - GFP Tag - V

**Restriction Sites:** SgfI-RsrII

**Cloning Scheme:**

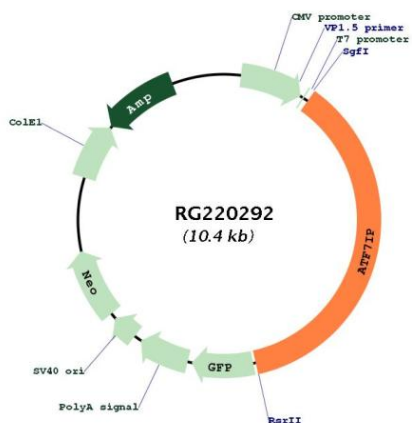


**ACCN:** NM\_018179

**ORF Size:** 3807 bp

<b>OTI Disclaimer:</b>	The molecular sequence of this clone aligns with the gene accession number as a point of reference only. However, individual transcript sequences of the same gene can differ through naturally occurring variations (e.g. polymorphisms), each with its own valid existence. This clone is substantially in agreement with the reference, but a complete review of all prevailing variants is recommended prior to use. <a href="#">More info</a>
<b>OTI Annotation:</b>	This clone was engineered to express the complete ORF with an expression tag. Expression varies depending on the nature of the gene.
<b>Components:</b>	The ORF clone is ion-exchange column purified and shipped in a 2D barcoded Matrix tube containing 10ug of transfection-ready, dried plasmid DNA (reconstitute with 100 ul of water).
<b>Reconstitution Method:</b>	<ol style="list-style-type: none"><li>1. Centrifuge at 5,000xg for 5min.</li><li>2. Carefully open the tube and add 100ul of sterile water to dissolve the DNA.</li><li>3. Close the tube and incubate for 10 minutes at room temperature.</li><li>4. Briefly vortex the tube and then do a quick spin (less than 5000xg) to concentrate the liquid at the bottom.</li><li>5. Store the suspended plasmid at -20°C. The DNA is stable for at least one year from date of shipping when stored at -20°C.</li></ol>
<b>RefSeq:</b>	<a href="#">NM_018179.3</a> , <a href="#">NP_060649.3</a>
<b>RefSeq Size:</b>	4661 bp
<b>RefSeq ORF:</b>	3813 bp
<b>Locus ID:</b>	55729
<b>UniProt ID:</b>	<a href="#">Q6VMQ6</a>
<b>Cytogenetics:</b>	12p13.1
<b>Protein Families:</b>	Transcription Factors
<b>Gene Summary:</b>	ATF7IP is a multifunctional nuclear protein that associates with heterochromatin. It can act as a transcriptional coactivator or corepressor depending upon its binding partners (summary by Liu et al., 2009 [PubMed 19106100]).[supplied by OMIM, Nov 2010]

Product images:



Circular map for RG220292