

Product datasheet for **RG220273**

GPR126 (ADGRG6) (NM_001032394) Human Tagged ORF Clone

Product data:

| | |
|---------------------------|--------------------------------------------------------------------------------|
| Product Type: | Expression Plasmids |
| Product Name: | GPR126 (ADGRG6) (NM_001032394) Human Tagged ORF Clone |
| Tag: | TurboGFP |
| Symbol: | ADGRG6 |
| Synonyms: | APG1; DREG; GPR126; LCCS9; PR126; PS1TP2; STQTL1; VIGR |
| Mammalian Cell Selection: | Neomycin |
| Vector: | pCMV6-AC-GFP (PS100010) |
| E. coli Selection: | Ampicillin (100 ug/mL) |
| ORF Nucleotide Sequence: | >RG220273 representing NM_001032394 Red=Cloning site Blue=ORF Green=Tags(s) |

TTTTGTAATACGACTCACTATAGGGCGGCCGGAATTCGTCGACTGGATCCGGTACCGAGGAGATCTGCC
GCC**CGATCGCC**

ATGATGTTTTCGCTCAGATCGAATGTGGAGCTGCCATTGGAAATGGAAGCCAGTCTCTCTGTTCTTAT
TTGCTTTATATATCATGTGTTCCTCACTCAGTGTGGGATGTGCCAACTGCCGAGTGGTTTTGTCCAA
CCCTTCTGGGACCTTTACTTCTCCATGCTACCCTAACGACTACCCAAACAGCCAGGCTTGCATGTGGACG
CTCCGAGCCCCACCGGTTATATCATTAGATAACATTTAACGACTTTGACATTGAAGAAGCTCCCAATT
GCATTTATGACTCATTATCCCTTGATAATGGAGAGAGCCAGACTAAATTTGTGGAGCAACTGCCAAAGG
CCTATCATTTAACTCAAGTGCGAATGAGATGCATGTGTCCTTTTCAAGTACTTTAGCATCCAGAAGAAA
GGTTTTCAATGCCAGCTACATCAGAGTTGCCGTGTCCTTAAGGAATCAAAAAGGTCATTTTACCCAGACAT
CAGATGCTTACCAGGTATCTGTTGCAAAAAGCATCTCTATTCCAGAGCTCAGTGTCTTACACTCTGCTT
TGAAGCAACCAAGTTGGCCATGAAGACAGTGATTGGACAGCTTCTCTACTCAATGCATCCTTACACA
CAATTGCTCAGTTTTGAAAGGCCAAGAGTGGCTACTTTCTATCCATTTCTGATTCAAAATGTTTGTGA
ATAATGCATTACCTGTCAAAGAAAAGAAGACATTTTGCAGAAAGCTTGAACAGCTCTGCCTGTTTGA
GAATAATCTTTGGGCTCTATTGGTGAAATTTCAAAGAAACTATGAAACAGTTCATGTGATTCTACC
ATTAGTAAAGTTATTCTGGGAATGGGAAATGTTGTTGGCTCAATCAAAATGAAATGTTCTCTCTAA
AAGGGGACATTTATAACTTTGACTTTGGAAATTTACCATGAATGCCAAAATCCTCTCAACCTCAGCTG
TAATGTGAAAGGGAATGTAGTCGACTGGCAAAATGACTTCTGGAATATCCCAAACCTAGCTCTGAAAGCT
GAAAGCAACCTAAGCTGTGGTTCCTACCTGATCCCGCTCCAGCAGCAGAACTGGCCAGCTGTGCAGACC
TGGGGACCCTCTGTCAAGATGGAATTACTATAGAATATCCGTAGTGATTGAGAACATCCTTCGTACCC
TGAGGTAAAAGTACAGAGCAAGGTGGCAGAATGGCTCAATTCAACCTTCCAAAATGGAACACACGGTT
TATGTCGTTAATATCAGTTTTACCTGAGTGTGGAGAGGACAAGATTAAGTCAAGAGAAGCCTTGAGG
ATGAGCCAAGGTTGGTGTCTTGGGCCCTTCTAGTTTACAATGCTACCAACAATACTAATTTAGAAGGAAA
AATCATTACGAGAAGCTCTAAAAAATAATGAGTCTTGGATGAAGGCTTGAGGCTACATACAGTGAAT



[View online >](#)

GTGAGACAACTGGGTCATTGTCTTGCCATGGAGGAACCCAAAGGCTACTACTGGCCATCTATCCAACCTT
CTGAATACGTTCTTCTTGTCCAGACAAGCCTGGCTTTTCTGCTTCTCGGATATGTTTTACAATGCTAC
CAACCCATTGGTAACCTACTGGGGACCTGTTGATATCTCCAACCTGTTAAAAGAAGCAAATGAAGTTGCT
AACCAGATTTTAAATTTAACTGCTGATGGGCAGAACTTAACCTCAGCCAATATTACCAACATTGTGGAAC
AGGTCAAAGAATTGTGAATAAAGAAGAAAACATTGATAAACACTTGGCTCAACTCTAATGAATATATT
TTCTAATATCTTAAGCAGTTCAGACAGTGACTTGGCTTGGTCACTCTTCTGAAGCTTTAAAAACAATTGAT
GAATTGGCCTTCAAGATAGACCTAAATAGCACATCACATGTGAATATTACAACCTCGGAACCTGGCTCTCA
GGTATCATCCCTGTTACCAGGGACAAATGCAATTTCAAATTTTAGCATTGGTCTTCCAAGCAATAATGA
ATCGTATTTCCAGATGGATTTTGAGAGTGGACAAGTGGATCCACTGGCATCTGTAATTTTGCCTCCAAAC
TTACTTGAGAATTTAAGTCCAGAAGATTCTGTATTAGTTAGAAGAGCACAGTTTACTTTCTTCAACAAAA
CTGGACTTTTCCAGGATGTAGGACCCCAAGAAAACTTTAGTGAGTTATGTGATGGCGTGCAGTATTGG
AAACATTACTATCCAGAATCTGAAGGATCTGTTCAAATAAAAAATCAAACATAACAAGAACTCAGGAAGTG
CATCATCCCATCTGTGCCTTCTGGGATCTGAACAAAAACAAAAGTTTGGAGGATGGAACACGTCAGGAT
GTGTTGCACACAGAGATTCAGATGCAAGTGAGACAGTCTGCCTGTGTAACCACTTACACACTTTGGAGT
TCTGATGGACCTTCCAAGAAGTGCCTCACAGTTAGATGCAAGAAACACTAAAGTCTCATTTCATCAGC
TATATTGGGTGTGGAATATCTGCTATTTTTTTCAGCAGCAACTCTCCTGACATATGTTGCTTTTGAGAAAT
TGCGAAGGGATTATCCCTCCAAAATCTTGATGAACCTGAGCACAGCCCTGCTGTTCTGAACTCCTCTT
CCTCTAGATGGCTGGATCACCTCCTTCAATGTGGATGGACTTTGCATTGCTGTTGCAGTCTGTTGCAT
TTCTTCTTCTGGCAACCTTTACCTGGATGGGGCTAGAAGCAATTCACATGTACATTGCTCTAGTTAAAG
TATTTAACACTTACATTCGCCGATACATTCTAAAATCTGCATCATTGGCTGGGGTTTGCCTGCCTTAGT
GGTGTGAGTTGTTCTAGCGAGCAGAAACAACAATGAAGTCTATGGAAAAGAAAGTTATGGGAAAGAAAA
GGTGATGAATCTGTTGGATTCAAGATCCAGTCATATTTTATGTGACCTGTGCTGGGTATTTTGGAGTCA
TGTTTTTCTGAACATTGCCATGTTTATTGTTGTAATGGTGCAGATCTGTGGGAGGAATGGCAAGAGAAG
CAACCGGACCCTGAGAGAAGAAGTGTAAAGGAACCTGCGCAGTGTGGTTAGCTTGACCTTTCTGTTGGGC
ATGACATGGGGTTTTGCATTCTTTGCCTGGGGACCCTTAAATATCCCCTTCATGTACCTCTTCTCCATCT
TCAATTCATTACAAGGCTTATTTATATTCATCTTCCACTGTGCTATGAAGGAGAATGTTCAAGAAACAGTG
GCGGGCGCATCTGCTGTGGTAGATTTTCGGTTAGCAGATAACTCAGATTGGAGTAAGACAGCTACCAAT
ATCATCAAGAAAAGTTCTGATAATCTAGGAAAATCTTTGTCTTCAAGCTCCATTGGTTCCAACCTCAACCT
ATCTTACATCCAATCTAAATCCAGCTCTACCACCTATTTCAAAGGAATAGCCACACAGATAATGTCTC
CTATGAGCATTCTTCAACAAAAGTGGATCACTCAGACAGTGCTCCATGGACAAGTCTTGTCAAAACT
GGCCCATGC

ACGCGTACGCGGCCGCTCGAG - GFP Tag - GTTTAA

Protein Sequence: >RG220273 representing NM_001032394
 Red=Cloning site Green=Tags(s)

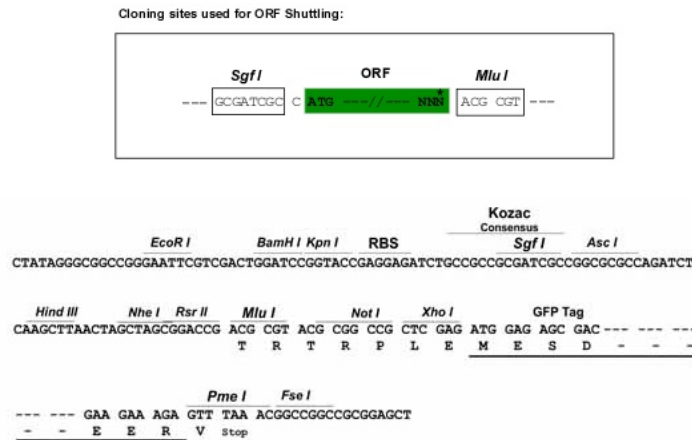
MMFRSDRMWSCHWKWKPSPLLFLFALYIMCVPHSVWGCANCRVVLNPSGTFSTPCYPNDYPNSQACMWT
 LRAPTGYIIQITFNDFDIEEAPNCIYDSLSDNGESQTKFCGATAKGLSFNSSANEMHVSFSSDFSIQKK
 GFNASYIRVAVSLRNQKVIPLPQTS DAYQVSVAKSISIPELSAFTLCFEATKVGHEDSDWTAFSYNASFT
 QLLSFGKAKSGYFLSISDSKCLLNALPVKEKEDIFAESFEQLCLVWNNLSGIGVNFKRNYETVPCDST
 ISKVIPGNGLKLLGSNQNEIVSLKGDIIYNFRLWNFTMNAKILSNLSCNVKGNVVDWQNDFNIPNLAKA
 ESNLSCGSYLIPLPAAELASCADLGTLCQDGIYRISVVIQNILRHPEVKVQSKVAEWNSTFQNWNYTV
 YVYNISFHL SAGEDKIKVKRSLEDEPRLVWALLVYNATNNTNLEGKIIQQKLLKNNESLDEGLRLHTVN
 VRQLGHCLAMEEPKGYWP SIQSEYVLPCKDPKPGFSASRICFY NATNPLVTYWGPVDISNCKEANEVA
 NQILNLTADGQNLTSANITNIVEQVKRIVNKEENIDITL GSTLMNIFSNILSSSDSLLSSEALKTID
 ELAFKIDLNSTSHVNITRNLALSVSSLLPGTNAISNFSIGLPSNNESYFQMDFESGQVDPLASVILPPN
 LLENLSPEDSVLVRRAQFTFFNK TGLFQDVGPQRKTLVSYYMACSIGNITIQNLKDPVQIKIKHTRTQEV
 HHPICAFWDLNKNK SFGGWNTSGCYAHRSDASET VCLCNHFTHFVGLMDLPRASQQLDARNTKVLTFIS
 YIGCGISAI FSAATLLTYVAFEKLRDYP SKILMNLSTALLFLNLLFLLDGWITSFNVDGLCIAVAVLLH
 FFLLATFTWGLEA IHMYIALVKVFNTYIRRYILKFCII GWGLPALVVS VVLA SRNNNEVY GKESY GKEK
 GDEF CWIQDPVIFVYTCAGYFGVMFFLNIA MFI VVMVQICGRNGKRSNRTLREEVLRNLSRVVSLTFLLG
 MTWGF AFAWGPLNIPFMYLFSIFNSLQGLFIFIFHCAMKENVQKQWRRHLCCGRFRLADNSDWSKTATN
 I IKKSSDNLGKSLSSSSIGSNSTYLTSKSKSSSTTYFKRNSHTDNVSYEHSFNKSGSLRQC FHGQVLVKT
 GPC

TRTRPLE - GFP Tag - V

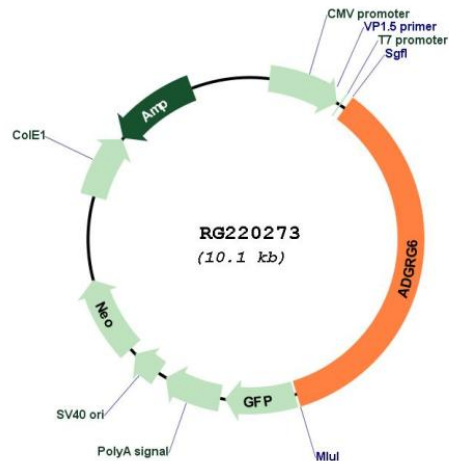
Restriction Sites:

SgfI-MluI

Cloning Scheme:



Plasmid Map:



ACCN: NM_001032394

ORF Size: 3579 bp

OTI Disclaimer: The molecular sequence of this clone aligns with the gene accession number as a point of reference only. However, individual transcript sequences of the same gene can differ through naturally occurring variations (e.g. polymorphisms), each with its own valid existence. This clone is substantially in agreement with the reference, but a complete review of all prevailing variants is recommended prior to use. [More info](#)

OTI Annotation: This clone was engineered to express the complete ORF with an expression tag. Expression varies depending on the nature of the gene.

Components: The ORF clone is ion-exchange column purified and shipped in a 2D barcoded Matrix tube containing 10ug of transfection-ready, dried plasmid DNA (reconstitute with 100 ul of water).

Reconstitution Method:

1. Centrifuge at 5,000xg for 5min.
2. Carefully open the tube and add 100ul of sterile water to dissolve the DNA.
3. Close the tube and incubate for 10 minutes at room temperature.
4. Briefly vortex the tube and then do a quick spin (less than 5000xg) to concentrate the liquid at the bottom.
5. Store the suspended plasmid at -20°C. The DNA is stable for at least one year from date of shipping when stored at -20°C.

RefSeq: [NM_001032394.2](#), [NP_001027566.1](#)

RefSeq Size: 6896 bp

RefSeq ORF: 3582 bp

Locus ID: 57211

UniProt ID: [Q86SQ4](#)

Cytogenetics: 6q24.2

Protein Families: Druggable Genome, GPCR, Transmembrane

Gene Summary: This gene, which is upregulated in human umbilical vein endothelial cells, encodes a G protein-coupled receptor. Variations in this gene can affect a person's stature. Multiple transcript variants encoding different proteins have been found for this gene. [provided by RefSeq, Mar 2009]