

Product datasheet for **RG220256**

DENN (MADD) (NM_130475) Human Tagged ORF Clone

Product data:

Product Type:	Expression Plasmids
Product Name:	DENN (MADD) (NM_130475) Human Tagged ORF Clone
Tag:	TurboGFP
Symbol:	MADD
Synonyms:	DEEAH; DENN; IG20; NEDDISH; RAB3GEP; RabGEF
Mammalian Cell Selection:	Neomycin
Vector:	pCMV6-AC-GFP (PS100010)
E. coli Selection:	Ampicillin (100 ug/mL)
ORF Nucleotide Sequence:	>RG220256 representing NM_130475 Red=Cloning site Blue=ORF Green=Tags(s)

TTTTGTAATACGACTCACTATAGGGCGCCGGGAATTCGTCGACTGGATCCGGTACCGAGGAGATCTGCC
GCC**CGATCGCC**

ATGGTGCAAAAGAAGAAGTTCTGTCTCGGTTACTTGACTATCTAGTGATCGTAGGGCCAGGCACCCGA
GCAGTGATAGCGTGGCCAGACTCTGAATTGCTACGGCGATACCCCTTGGAGGATCACACTGAGTTTCC
CCTGCCCCAGATGTAGTGTCTTCTGCCAGCCGAGGGTGCCTGAGCGTGGCAGCGGCGCATGAGC
CTTCGGGATGATACCTCTTTGTCTTACCCTCACTGACAAGGACTGGAGTACGCGATATGGCATCT
GTGTTAACTTCTACCGCTCCTTCCAAAAGCGAATCTCTAAGGAGAAGGGGAAGGTGGGGCAGGGTCCCG
TGGGAAGGAAGGAACCCATGCCACCTGTGCCTCAGAAGAGGGTGGCACTGAGAGCTCAGAGAGTGGCTCA
TCCTGCAGCCTCTCAGTGTGACTCTACCCCTGATGTGAACAGTCTCCTCGGGCAAACGCCGGGCCA
AGGCGGGGAGCCGCTCCCGCAACAGTACTCTCACGTCCCTGTGCGTGTCTAGCCACTACCCCTTCTTCTC
CACCTTCCGAGAGTGTGTATACTCTCAAGCGCTGGTGGACTGCTGTAGTGAGCGCCTTCTGGGCAAG
AACTGGGCATCCCTCGAGGCGTACAAAGGACACCATGTGGCGGATCTTACTGGATCGCTGTGGTAG
AGGAGAAGTCAAGTGCCTTCTGCATGACCTTCGAGAGATTGAGGCTGGATCTATCGATTGCTGCGCTC
CCCAGTACCCGTCTCTGGCAGAAGCGAGTAGACATCGAGGTCTACCCCAAGAGCTCCAGCCAGCTCTG
ACCTTTGCTCTTCCAGACCCATCTCGATTACCCCTAGTGGATTTCCCACTGCACCTTCCCTGGAACCTC
TAGGTGTGGACGCTGTCTCCAGGTGCTAACCTGCATTCTGTTAGAGCACAAGGTGGTGTACAGTCCCG
AGACTACAATGCACTCTCCATGTCTGTGATGGCATTCTGGCAATGATCTACCCACTGGAGTATATGTTT
CCTGTCATCCCGCTGCTACCCACCTGCATGGCATCAGCAGAGCAGCTGCTGTTGGCTCAACCCCGTACA
TCATTGGGGTTCCTGCCAGCTTCTTCTCTACAACTGGACTTCAAAATGCCTGATGATGTATGGCTAGT
GGATCTGGACAGCAATAGGGTATTGCCCCACCAATGCAGAAGTGTGCCTATCCTGCCAGAACCAGAA
TCACTAGAGCTGAAAAAGCATTTAAAGCAGGCCTTGGCCAGCATGAGTCTCAACACCCAGCCCATCTCA
ATCTGGAGAAATTCATGAGGGCCAGGAGATCCCCCTTCTTGGGAAGGCTTCTAATGACCTGCAGTC
CACACCGTCCACTGAATCAACCCACTCATCTATGGCAATGATGTGGATTCTGTGGATGTTGCAACCAGG



[View online >](#)

GTTGCCATGGTACGGTTCTTCAATTCCGCCAACGTGCTGCAGGGATTTTCAGATGCACACGCGTACCCTGC
 GCCTCTTTCCTCGGCCTGTGGTAGCTTTTCAAGCTGGCTCCTTTCTAGCCTCACGTCCCCGGCAGACTCC
 TTTTGCCGAGAAATTGGCCAGGACTCAGGCTGTGGAGTACTTTGGGGAATGGATCCTTAACCCACCAAC
 TATGCCTTTCAGCGAATTCACAACAATATGTTTGTATCCAGCCCTGATTGGTGACAAGCCAAAGTGGTATG
 CTCATCAGCTGCAGCCTATCCACTATCGCGTCTATGACAGCAATCCCAGCTGGCTGAGGCCCTGAGTGT
 ACCACCAGAGCGGACTCTGACTCCGAACCTACTGATGATAGTGGCAGTGATAGTATGGATTATGACGAT
 TCAAGCTCTTCTACTCCTCCCTTGGTGACTTTGTGTCAGTAAAATGATGAAATGTGACATTAATGGTGATA
 CTCCCAATGTGGACCCTCTGACACATGCAGCACTGGGGGATGCCAGCGAGGTGGAGATTGACGAGCTGCA
 GAATCAGAAGGAAGCAGAAGAGCCTGGCCAGACAGTGAGAACTCTCAGGAAAACCCCCACTGCGCTCC
 AGCTCTAGCACCACAGCCAGCAGCAGCCCCAGCACTGTATCCACGGAGCCAACTCTGAACCTGCTGACT
 CTACGGAGATGGATGATAAGGCAGCAGTAGGCGTCTCCAAGCCCCCTCCTTCCGTGCCTCCAGCATTGG
 CAAATCGAACGTGGACAGACGTAGGCAGAAAATGGAGAGGGGTGAGTGCAGCGGCGAATCTATGACAA
 CCATACTCGAGCCCAATATGGCTTTCCCTGAGGAAGATGAGGATGAGCAGGGGAAAGTTACTC
 CCCGATTCAGCCAACATGTCAGTGGCAATCGGGCTCAAAGCTGCTGCGGCCAACAGCTTGAGACTGGC
 AAGTGACTCAGATGCAGAGTCACTCTCGGGCAAGCTCTCCAACCTCCACCGTCTCCAACACCAGCACC
 GAGGGCTTCGGGGGCATCATGTCTTTGCCAGCAGCCTCTATCGGAACCACAGTACCAGCTTCAGCTTT
 CAAACCTCACACTGCCCACAAAGGTGCCCGAGAGAAGGCCACGCCCTTCCCAGTCTGAAAGTATTTGG
 GCTAAATACTCTAATGGAGATTGTTACTGAAGCCGGCCCCGGGAGTGGTGAAGGAAAACAGGAGGGCGTTA
 GTGGATCAGAAGTCATCTGTCAATAAACACAGCCCAACAGTGAAGGAGAACTCCATCACCCAGGGTC
 GATCCAGCAATTTAGTGAAGCAGCAGTTCCTGAAGGAGGTGGTGCACAGCGTCTGGACGGCCAGGG
 AGTTGGCTGGCTCAACATGAAAAGGTGCGCCGGCTGCTGGAGAGCGAGCAGTGCAGTCTTTGTCTG
 AGCAAGCTGAACCGCATGGTGCAGTCAAGGACGATGCCCGCAGGACATCATCCCGATGTGGAGATCA
 GTCGGAAGGTGTACAAGGGAATGTAGACCTCCTCAAGTGTACAGTCTCAGCTTGAGCAGCTATATG
 CCACGCGGGTCTGGGTGGCATGGCCAGCATCTTTGGGCTTTTGGAGATTGCCAGACCCACTACTAGT
 AAAGAACCAGACAAGCGGAAGAGAAGTCCAACAGAAAAGTGAATAACCCAGTTGGCAAGGATCCTGGCC
 TAGCTGGCGGGGGACCCAAAGGCTATGGCACAACTGAGAGTCCACAACCTGGGACCTCGGGCACCAAG
 TGCCACAGGAAAGGTCCTAAGGAACTGGACACCAGAAGTTAAAGGAAGAAAATTTTATAGCATCTATT
 GAATTGTGGAACAAGCACCAGGAAGTGAAGGCAAGAAAGCTTTGGAAAAACAGAGGCTGAAGTAAATCA
 AACCTGTCTTTGACCTTGGTGGACAGAGGAGAAAAAGTCCCAGATCAGCGCAGACAGTGGTGTGAGCCT
 GACGTCTAGTCCCAGAGGACTGATCAAGACTCTGTATCGGCGTGAAGTCCAGCTGTTATGATCCGAGC
 TCAAGTCAAGATTCTGAAGTTAGCACCGTGGTGAAGTAAAGTCTGGAGAGACCCTTGAGCTGACAGTG
 ACTTGAGCAGCAATGCAGGTGATGGACCAGGTGGCGAGGGCAGTGTTCACCTGGCAAGCTCTCGGGGCAC
 TTTGTCTGATAGTGAATTTGAGACCAACTCTGCCACAAGCACCATCTTTGGTAAAGCCACAGCTTGAAG
 CCAAGCATAAAGGAGAAGCTGGCAGGCAGCCCCATTCTGTAATCTGAAGATGTGAGCCAGCGAGTCTATC
 TCTATGAGGGACTCCTAGGAAGGACAAAGGATCCATGTGGGACCAGTTAGAGGATGCAGCTATGGAGAC
 CTTTTCTATAAGCAAAGAGCGTTCTACTTTATGGGACCAATGCAATCTGGGAAGATGCCTTCTTAGAT
 GCTGTGATGTTGGAGAGAGAAGGGATGGGTATGGACCAGGGTCCCAGGAAATGATCGACAGGTACCTGT
 CCCTTGGAGAACATGACCGGAAGCGCTGGAAGATGATGAAGATCGCTTGGTGGCCACACTTCTGCACAA
 CCTCATCTCCTACATGCTGCTGATGAAGTAAATAAGAATGACATCCGCAAGAAGGTGAGGCGCCTAATG
 GGAAAGTCGCACATTGGGCTTGTGTACAGCCAGCAAATCAATGAGGTGCTTGTATCAGCTGGCGAACCTGA
 ATGGACGCGATCTCTATCTGTTCCAGTGGCAGCCGGCAGATGAAGAAGCAGACATTTGTGGTACATGC
 AGGGACAGATACAAACGGAGATATCTTTTTCATGGAGGTGTGCGATGACTGTGTGGTGTGCGTAGTAAC
 ATCGGAACAGTGTATGAGCGCTGGTGGTACGAGAAGCTCATCAACATGACCTACTGTCCCAAGACGAAGG
 TGTTGTGCTTGTGGCGTAGAAAATGGCTCTGAGACCCAGCTCAACAAGTTCTATACTAAAAAGTGTGCGGA
 GCTGTACTACTGTGTGAAGGACAGCATGGAGCGCGCTGCCGCCGACAGCAAAGCATCAAACCCGGACCT
 GAATTGGGTGGCGAGTTCCTGTGCAGGACCTGAAGACTGGTGAAGGTGGCTGCTGCAGGTGACCTGG
 AAGGGATCAACCTCAAATTCATGACAATCAGTTCCTGAAATTAAGAAGTGG

AGCGGACCGACGCGTACGCGGCCGCTCGAG - GFP Tag - GTTTAA

Protein Sequence: >RG220256 representing NM_130475
 Red=Cloning site Green=Tags(s)

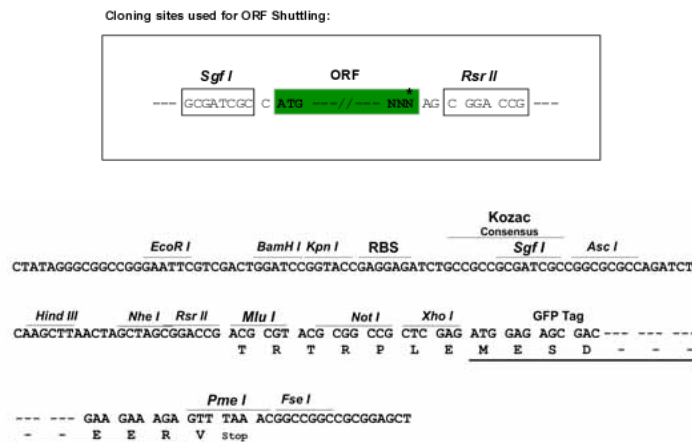
```

MVQKKKFCPRLLDYLVIIGARHPSSDSVAQTPELLRRYPLEDHTEFFLPPDVVFFCQPEGCLSVRQRMS
LRDDTSFVFTLTDKDTGVTRYGICVNFYRSFQKRISKEKGGGAGSRGKEGTHATCASEEGGTESSESGS
SLQPLSADSTPDVNQSPRGKRRAKAGSRSRNSTLTLCLVLSHYPPFFSTFRECLYTLKRLVDCCSERLLGK
KLGIPRGVQRDTMWRIFTGSLLEVEKSSALLHDLREIEAWIYRLLRSPVPVSGQKRVDIEVLPQELQPAL
TFALPDPSPRFTLVDFPLHLPLELLGVDAQLVLTCLLLEHKVVLQSRDYNALSMSVMAFVAMIYPLEYMF
PVIPLLPCTMASAEQLLLAPTPYIIGVPASFFLYKLDKMPDDVWLVDLDSNRVIAPTNAEVLPIPEPE
SLELKKHLKQALASMSLNTQPILNLEKFHEGQEIPLLLGRPSNDLQSTPSTEFNLIYGNVDVSDVATR
VAMVRRFNSANVLQGFQMHTRTLRLFPRPVVAFQAGSFLASRPRQTPFAEKLARTQAVEYFGEWILNPTN
YAFQRIHNNMFDPALIGDKPKWYAHQLQPIHYRVYDSNSQLAEALSVPPERDSDEPTDDSGSDSMDYDD
SSSSYSSLGDFVSEMMKCDINGDTPNVDPLTHAALGDASEVEIDELQNQKEAEEPGPDSSENSQENPLRS
SSSTTASSPSTVIHGANSEPADSTEMDDKAAVGVSKPLPSVPPSIGKSNVDRRQAEIGESVRRRIYDN
PYFEPQYGFPEEDEDEQGESYTPRFSQHVSNGRAQKLLRPNSLRLASDSAESDRASSPNSTVSNSTST
EGFGGIMSFASSLYRNHSTSFSLSNLTLPTKGAREKATPFPSLKVFLNLTMEIVTEAGPGSGEENRRAL
VDQKSSVIKHSPTVKREPPSPQGRSSNSSENQFLKEVHVSVDGQGVGWLNMKKVRRLESEQLRVFVL
SKLNRMVQSEDDARQDIIPDVEISRKYKGMDDLKCTVL SLEQSYAHAGLGGMASIFGLLEIAQTHYYS
KEPDKRKRSPTESVNTVPVKDPLAGRGPDKAMAQLRVPQLGPRAPSATGKGPKELDTRSLKEENFIASI
ELWNKHQEVKKQKALEKQRPEVIKPVFDLGETEEKKSQISADSGVSLTSSSQRTDQDSVIGVSPAVMIRS
SSQDSEVSTVVSNSSETL GADSDLSSNAGDGGGEGSVHLASSRGTLDSEIETNSATSTIFGKAHSLK
PSIKEKLAGSPIRTSEDVSRVYLYEGLLGRDKGSMWDQLEDAAMETFSISKERSTLWDQMFWEDAFLD
AVMLEREGMGMQDQGPQEMIDRYLSLGEHDRKLEDEDRLLATLLHNLISYMLLMKVNKDIRKKVRRMLM
GKSHIGLVYSQQINEVL DQLANLNGRDL SIWSSGSRHMKKQTFV VHAGTDTNGDIFFEVCDDCVLRSN
IGTVYERWWEKLIINMTYCPKTKVLCWRNRNGSETQLNKFYTKKCRELYYCVKDSMERAARQSIKPGP
ELGGFPPVQDLKTGEGGLLQVTLEGINLKFMHNQFLKLLKKW
  
```

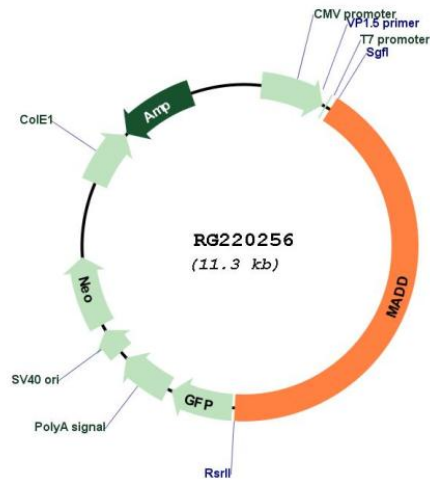
SGPTRTRRLE - GFP Tag - V

Restriction Sites: SgfI-RsrII

Cloning Scheme:



Plasmid Map:



ACCN: NM_130475

ORF Size: 4743 bp

OTI Disclaimer: The molecular sequence of this clone aligns with the gene accession number as a point of reference only. However, individual transcript sequences of the same gene can differ through naturally occurring variations (e.g. polymorphisms), each with its own valid existence. This clone is substantially in agreement with the reference, but a complete review of all prevailing variants is recommended prior to use. [More info](#)

OTI Annotation: This clone was engineered to express the complete ORF with an expression tag. Expression varies depending on the nature of the gene.

Components: The ORF clone is ion-exchange column purified and shipped in a 2D barcoded Matrix tube containing 10ug of transfection-ready, dried plasmid DNA (reconstitute with 100 ul of water).

Reconstitution Method:

1. Centrifuge at 5,000xg for 5min.
2. Carefully open the tube and add 100ul of sterile water to dissolve the DNA.
3. Close the tube and incubate for 10 minutes at room temperature.
4. Briefly vortex the tube and then do a quick spin (less than 5000xg) to concentrate the liquid at the bottom.
5. Store the suspended plasmid at -20°C. The DNA is stable for at least one year from date of shipping when stored at -20°C.

RefSeq: [NM_130475.2](#), [NP_569831.1](#)

RefSeq Size: 5985 bp

RefSeq ORF: 4746 bp

Locus ID: 8567

UniProt ID: [Q8WXG6](#)

Cytogenetics: 11p11.2

Protein Families: Druggable Genome

Gene Summary: Tumor necrosis factor alpha (TNF-alpha) is a signaling molecule that interacts with one of two receptors on cells targeted for apoptosis. The apoptotic signal is transduced inside these cells by cytoplasmic adaptor proteins. The protein encoded by this gene is a death domain-containing adaptor protein that interacts with the death domain of TNF-alpha receptor 1 to activate mitogen-activated protein kinase (MAPK) and propagate the apoptotic signal. It is membrane-bound and expressed at a higher level in neoplastic cells than in normal cells. Several transcript variants encoding different isoforms have been described for this gene. [provided by RefSeq, Jul 2008]