

## Product datasheet for **RG220246**

### TCF12 (NM\_207038) Human Tagged ORF Clone

#### Product data:

Product Type:	Expression Plasmids
Product Name:	TCF12 (NM_207038) Human Tagged ORF Clone
Tag:	TurboGFP
Symbol:	TCF12
Synonyms:	bHLHb20; CRS3; HEB; HsT17266; HTF4; p64; TCF-12
Mammalian Cell Selection:	Neomycin
Vector:	pCMV6-AC-GFP (PS100010)
E. coli Selection:	Ampicillin (100 ug/mL)



[View online »](#)

**ORF Nucleotide Sequence:**

>RG220246 representing NM\_207038  
 Red=Cloning site Blue=ORF Green=Tags(s)

TTTTGTAATACGACTCACTATAGGGCGGCCGGGAATTCGTCGACTGGATCCGGTACCGAGGAGATCTGCC  
 GCC**CGGATCGCC**

ATGAATCCCAGCAACAACGCATGGCCGTATAGGGACCGACAAGGAGCTGAGCGACCTACTGGACTTCA  
 GTGCGATGTTTTCCCACCTGTTAATAGTGGGAAAAGTACCACTACACTGGGAAGCAGTCAATTCAG  
 TGGATCAGGTATTGATGAAAGAGGAGGTACAACATCTTGGGGAACAAGTGGTCAACCAAGTCCTTCTAT  
 GATTCACTAGAGGTTTTACAGACAGCCCTCATTACAGTGATCACTTGAATGACAGTCGATTAGGAGCCC  
 ATGAAGGCTTGTCCCAACACCTTTTCATGAACTCAAATCTGATGGGAAAAACATCAGAGAGAGGCTCATT  
 TTCCCTGTACAGCAGAGATACTGGATTACCAGGCTGTCAATCTAGTCTCCTGAGACAAGATCTGGGGCTT  
 GGGAGCCAGCACAGCTATCTTCTTCAGGAAAACCTGGGACAGCATACTATTCTTCTGCTACAAGTT  
 CCAGGAGGAGACCACTCCATGACTCTGCAGCGCTTGATCCCTTGAAGCAAAAAAAGTCAGAAAGGTGCC  
 TCCTGGTTTGCCCTCTTCTGTATATGCACCATCCCAAAATTCAGATGATTTCAACCGTGAATCTCCTAGT  
 TATCCATCTCCTAAGCCCAACCAAGTATGTTCCGCTAGCACTTTCTTTATGCAAGATGGGACCCACAATT  
 CTCTGACCTTTGGAGTTCATCAATGGGATGAGCCAGCCTGGTTTTGGTGGGAATTCTGGGGACCTCCAC  
 TTCCACATGTCTCAATCCAGTAGTTATGGCAACCTTCATTACATGACCGCTTGAGTTATCCTCCACAC  
 TCAGTTTCACCAACAGACATAAACACGAGTCTCCACCAATGTCCAGCTTTCATCGCGGCAGTACCAGCA  
 GTTCACCTTACGTTGCTGCCTCACACACTCCTCCCATCAATGGATCAGACAGCATTCTAGGAACCAGAGG  
 GAATGCTGCTGGAAGCTCACAGACAGGTGATGCACTTGGAAAGGCTTTGGCATCTATTTATTCTCCTGAC  
 CATACCAGCAGTAGTTTTCCGTCAAATCCATCAACACCAGTTGGATCACCTTACCTCTCACAGGTACCA  
 GTCAGTGGCCAAGACCTGGAGGGCAAGCACCTTCATCCCAAGCTATGAAAACCTCACTCCACTCCCTGCA  
 GTCTCGAATGGAGGATCGTTTAGACAGACTGGATGATGCAATCCATGTGCTGCGGAACCATGCTGTGGGA  
 CCTTCCACCAGTTTGCTGCTGGTACAGTGATATACATAGTTTATTGGGACCATCCCATAAATGCACCAA  
 TTGGAAGCCTCAATCAAATATGGAGGATCAAGCCTTGTGCAAGCAGTCGATCAGCTTCAATGGTTGG  
 AACTCATCGGGAAGACTCTGTCAGTCTCAATGGCAATCATTAGTCTGTCTAGTACAGTCACTACTTCA  
 AGCACAGACCTGAACATAAAACACAAGAAAATTATAGAGGTGGCTTGCAAAGTCAGTCTGGAAGTGTG  
 TTACAACAGAAAATCAAGACTGAAAACAAAAGAAAAGGATGAAAACCTTCATGAACCTCCTTCATCAGATGA  
 CATGAAGTCAGATGATGAATCCTCCAAAAAGATATCAAGGTTTCATCTAGAGGCAGAACAAGCAGTACT  
 AATGAAGATGAGGATTTGAACCCTGAACAGAAGATAGAAAGGGAGAAGGAGAGGCGGATGGCTAACAAATG  
 CCAGAGAACGCTTACGCGTGCAGGATATTAATGAAGCATTCAAAGAGCTTGGCCGAATGTGTCAGCTTCA  
 CTTGAAGAGTGAAAAACCCAAACAAAACCTTATTCTTCATCAAGCCGTGGCAGTCATCCTTAGTCTA  
 GAACAGCAAGTCAGAGAGAGGAACCTTAACCCAAAGCAGCCTGCCTTAAGAGAAGGGAAGAAGAAAAAG  
 TTTCTGCCGTATCGGCAGAGCCGCCAACCACTGCCAGGAACCCATCCTGGGCTTAGTGAACCTACCAA  
 CCCTATGGGTCATATG

AG**CGGACCG**ACGCGTACGCGGCCGCTCGAG - GFP Tag - GTTTAA

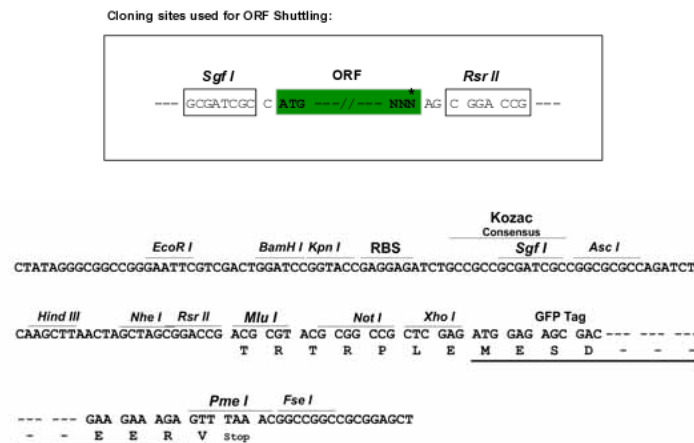
**Protein Sequence:** >RG220246 representing NM\_207038  
Red=Cloning site Green=Tags(s)

MNPQQQRMAAIGTDKELSDLLDFSAMFSPVNSGKTRPTTLGSSQFSGSGIDERGGTTSWGTSGQPSPSY  
 DSSRGTDSPHYSDHLNDSRLGAHEGLSPTPFMNSNLMGKTSERGSFSLYSRDTGLPGCQSSLLRQDLGL  
 GSPAQLSSSGKPGTAYYSFSATSSRRRPLHDSAALDPLQAKKVRKVPPGLPSSVYAPSPNSDDFNRES  
 YPSPKPPTSMFASTFFMQDGTNSSLWSSNGMSQPGFGGILGTSTSHMSQSSSYGNLHSHDRLSYPPH  
 SVSPTDIINTSLPPMSSFHRGSTSSSPYVAASHTPPINGSDSILGTRGNAAGSSQTGDALGKALASIYSPD  
 HTSSSFSPNPSTVPVGSPLTGTSTQWPRPGQAPSPSPSYENSLHSLQSRMEDRLDRLDDAIHVLNRNHAVG  
 PSTSLPAGHSDIHSLLGPSHNAPIGSLNSNYGGSSLVASSRSASVMGTHREDSVSLNGNHVLSSTVTTT  
 STDLNHKTQENYRGGLQSQSGTVVTEIKTENKEKDENLHEPPSSDDMKSDDESSQDKIKVSSRGRSTST  
 NEDEDLNPEQKIEREKERRMANNARERLVRDINEAFKELGRMCQLHLKSEKPTKLLILHQAVAVILSL  
 EQQVRRERLNPKAAACLKRREEEKVSAVSAEPPTTLPGTHPGLSETTNPNGHM

SGPTRRRLE - GFP Tag - V

**Restriction Sites:** SgfI-RsrII

**Cloning Scheme:**



**ACCN:** NM\_207038

**ORF Size:** 2046 bp

**OTI Disclaimer:** The molecular sequence of this clone aligns with the gene accession number as a point of reference only. However, individual transcript sequences of the same gene can differ through naturally occurring variations (e.g. polymorphisms), each with its own valid existence. This clone is substantially in agreement with the reference, but a complete review of all prevailing variants is recommended prior to use. [More info](#)

**OTI Annotation:** This clone was engineered to express the complete ORF with an expression tag. Expression varies depending on the nature of the gene.

**Components:** The ORF clone is ion-exchange column purified and shipped in a 2D barcoded Matrix tube containing 10ug of transfection-ready, dried plasmid DNA (reconstitute with 100 ul of water).

**Reconstitution Method:**

1. Centrifuge at 5,000xg for 5min.
2. Carefully open the tube and add 100ul of sterile water to dissolve the DNA.
3. Close the tube and incubate for 10 minutes at room temperature.
4. Briefly vortex the tube and then do a quick spin (less than 5000xg) to concentrate the liquid at the bottom.
5. Store the suspended plasmid at -20°C. The DNA is stable for at least one year from date of shipping when stored at -20°C.

**RefSeq:** [NM\\_207038.2](#)

**RefSeq Size:** 4717 bp

**RefSeq ORF:** 2049 bp

**Locus ID:** 6938

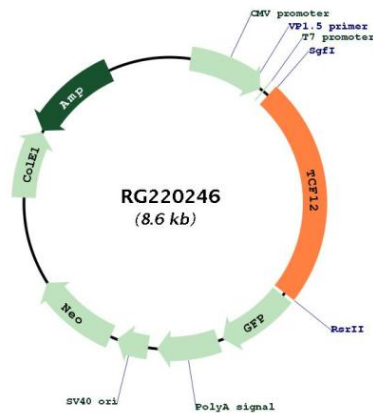
**UniProt ID:** [Q99081](#)

**Cytogenetics:** 15q21.3

**Protein Families:** Druggable Genome, Transcription Factors

**Gene Summary:** The protein encoded by this gene is a member of the basic helix-loop-helix (bHLH) E-protein family that recognizes the consensus binding site (E-box) CANNTG. This encoded protein is expressed in many tissues, among them skeletal muscle, thymus, B- and T-cells, and may participate in regulating lineage-specific gene expression through the formation of heterodimers with other bHLH E-proteins. Several alternatively spliced transcript variants of this gene have been described, but the full-length nature of some of these variants has not been determined. [provided by RefSeq, Jul 2008]

### Product images:



Circular map for RG220246