

Product datasheet for **RG220229**

CTIP2 (BCL11B) (NM_022898) Human Tagged ORF Clone

Product data:

Product Type:	Expression Plasmids
Product Name:	CTIP2 (BCL11B) (NM_022898) Human Tagged ORF Clone
Tag:	TurboGFP
Symbol:	BCL11B
Synonyms:	ATL1; ATL1-alpha; ATL1-beta; ATL1-delta; ATL1-gamma; CTIP-2; CTIP2; hRIT1-alpha; IDDFSTA; IMD49; RIT1; ZNF856B
Mammalian Cell Selection:	Neomycin
Vector:	pCMV6-AC-GFP (PS100010)
E. coli Selection:	Ampicillin (100 ug/mL)



[View online »](#)

ORF Nucleotide Sequence:

>RG220229 representing NM_022898
 Red=Cloning site Blue=ORF Green=Tags(s)

TTTTGTAATACGACTCACTATAGGGCGGCCGGAATTCGTCGACTGGATCCGGTACCGAGGAGATCTGCC
 GCC**CGGATCGCC**

ATGTCGCCGCCAAACAGGGCAACCCGACACTTGTCCAGAGGGAGCTCATCACCCAGAGGCTGACC
 ATGTGGAGGCCGCATCCTCGAAGAAGACGAGGGTCTGGAGATAGAGGAGCCAAGTGGCCTGGGGCTGAT
 GGTGGGTGGCCCCGACCTGACCTGCTCACCTGTGGCCAGTGTCAAATGAACTTCCCCTTGGGGACATC
 CTGGTTTTATAGAGCACAAAAGGAAGCAGTGTGGCGGCAGCTTGGGTGCCTGCTATGACAAGGCCCTGG
 ACAAGGACAGCCCGCCACCCTCCTCAGCTCCGAGCTCAGGAAAGTGTCCGAGCCGGTGGAGATCGGGAT
 CCAAGTACCCCCGACGAAGATGACCACCTGCTCTACCCACGAAAGGCATCTGTCCAAGCAGGAGAAC
 ATTGCAGGTAAGATGAGCCTTCCAGCTACATTTGCACAACATGCAAGCAGCCCTTCAACAGCGCGTGGT
 TCCTGCTGCAGCACGCGCAGAACACGCACGGCTTCCGCATCTACCTGGAGCCGGGCCGGCCAGCAGCTC
 GCTCACGCCGCGCTCACCATCCCGCCGCGCTCGGGCCGGAGGCCGTGGCGCAGTCCCCGCTCATGAAT
 TTCTGGGCGACAGCAACCCCTTCAACCTGCTGCGCATGACGGGCCCATCTGCGGGACCACCCGGCT
 TCGGCGAGGGCCCTGCCGGGACGCCGCTCTCTTCACTCCCGCCGCGCCACCACCTGGACCCGCA
 CCGCTCAGTGGCAGGAGATGGGGCTCGTCGCCACGACCCAGTGCCTTCGACCGAGTCATGCGCCTG
 AACCCATGGCCATCGACTCGCCGCCATGGACTTCTCGCGGGCGCTCCGCGAGCTGGCGGGCAACAGCT
 CCACGCCGCCCGCTGTCCCGGGCCGGCAACCCATGACCCGGCTCCTGAACCCCTTCCAGCCAG
 CCCAAGTCCCGTTCCTGAGCACGCCCGCTGCCGCCATGCCCTGGCGGACGCCGCCCGCCGAG
 CCGCCAGCAAGAGCAAGTCGTGCGAGTCTGCGGCAAGACCTTCAAGTCCAGAGCAATCTCATCGTGC
 ACCGGCAGTCACACGGGCGAGAAGCCCTACAAGTGCCAGCTGTGCGACCACCGTGTCCGAGCCCA
 CAAGCTCAAGCGCCACATGAAGACGCACATGCACAAGGCCGCTCGCTGGCCGGCCGCTCCGACGACGGG
 CTCTCGGCCGCCAGCTCCCCGAGCCGCGACAGCGAGCTGGCGGCGAGGGCTCAAGCGGCCGACG
 GTGACTTCGCCACCACGAGAGCGACCCGCTCGTGGGCCACGAGCCGGAGGAGGAGGACGAGGAGGAGGA
 GGAGGAGGAGGAGGAGTGTACTGGAGAACGAGAGCCGCGCCGAGTCGAGCTTCAAGTGGACTCGGAG
 CTGAGCCGCAACCGGAGAACGGCGGTGGTGGGTGCCGGGGTCCCGGGCGGGGGGGCGCGGCCA
 AGGCGTGGCTGACGAGAAGGCGTGGTGTGGCAAGGTCATGGAGAACGTGGGCTAGGCGACTGCC
 GCAGTACGGCGAGCTCCTGGCCACAAGCAGAAGCGCGGCCTTCTGAAGCGTGGCGGGCGGGCGG
 GACGGGGCGACGACGACGACGCGGGCGCTGCGGGACGCGGGCGGGCGGGCGGGTCAACGGGCGCG
 GGGCGGCTTTCGCGCCAGGACCGAGCCCTTCCCGGGCTTCCCGCGCAAGCCCGCGCCGCTGCCAG
 CCCCAGGCTCAACAGCGCCGCAAGCGCATCAAGTGGAGAAGGACCTGGAGCTGCCGCCCGCGGCTC
 ATCCCGTCCGAGAACGTGTACTCGCAGTGGTGGTGGGTACGCGGGCTCGCGGCACTTCAAGGAGCC
 CCTTCTGGGCTTACGGACGCACGACAGTCCGCTTCCGACAGTGTCCGAGCACTCGTCCGAGAACGG
 CAGCTGCGCTTCTCCACGCCCGCGGGACCTGCTGGACGGCGGCTCTCGGGCCGAGCGGCACGGCC
 AGCGGAGGACACCCCGCACTGGCGGGCCGGGCCCGGGCGGCCAGCTCCAAGGAGGGCCGCCGCA
 GCGACAGTGCAGTACTGCGGCAAGGTGTTCAAGAACTGCAGCAACTTACGGTGCACCGGGGAGCCA
 CACCGGCGAGCGCCTTACAAGTGCAGCTGTGCAACTACGCGTGCAGCAGAGCAAGCTCACGCGC
 CACATGAAGACGCACGGCAGATCGGCAAGGAGGTGTACCCTGCGACATCTGCCAGATGCCCTTACGG
 TCTACAGCACCTGGAGAAACACATGAAAAAGTGGCACGGCGAGCACTTGTGACTAACGACGTCAAAT
 CGAGCAGGCCGAGAGGAGC

AG**CGGACCG**ACGCGTACGCGGCCGCTCGAG - GFP Tag - GTTTAA

Protein Sequence: >RG220229 representing NM_022898
 Red=Cloning site Green=Tags(s)

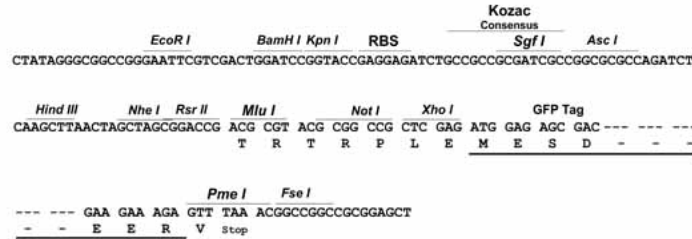
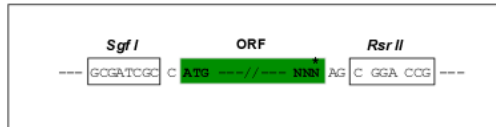
```
MSRRKQGNPQHL SQRELITPEADHVEAAILEEDEGLEIEEPSGLGLMVGGPDPDLLTCGQCQMNFLGDI
LVFIEHKRKQCGGSLGACYDKALDKDSPPSSRSELRKVSEPVIEIGIQVTPDEDDHLLSPTKGICPKQEN
IAGKDEPSSYICTTCKQPFNSAWFLQHAQNTGFRFYIYLEPGPASSLTPRLTIPPLGPEAVAQSPLMN
FLGDSNPFNLLRMTGPILRDHPGFEGRLPGTPPLFSPPPRHHLDPHRLSAEEMGLVAQHPSAFDRVMRL
NPMAIDSPAMDFSRRRLRELAGNSSTPPVSPGRGNPMHRLLNPFQSPKSPFLSTPPLPMPGGTPPPQ
PPAKSKSCEFCGKTFKFQSNLIVHRRSHTGEKPYKCQLCDHACSQASKLKRHMKTHMHKAGSLAGRSDDG
LSAASSPEPGTSELAGEGLKAADGDFRHHESDPSLGHEPEEEEEEEEEEEEEELLENESRPESFSMDSE
LSRNRENGGGVPGVPGAGGGAALADEKALVLGKVMENVGLGALPQYGELLADKQKRGAFKRAAGGG
DAGDDDDAGGCGDAGAGGAVNGRGGGFAPGTEPFPLFPRKPAPLSPGLNSAAKRIKVEKDLELPPAAL
IPSENVYSQWLVGYAASRHFMKDPFLGFTDARQSPFATSEHSSENGSLRFSTPPGDLLDGGLSGRSGTA
SGGSTPHLGGPGPGRPSSKEGRRSDTCEYCGKVKNCNSLTVHRRSHTGERPYKCELCNYACAQSSKLTR
HMKTHGQIGKEVYRCDICQMPFSVYSTLEKHMKKWHGEHLLTNDVKIEQAERS
```

SGPTRRRLE - GFP Tag - V

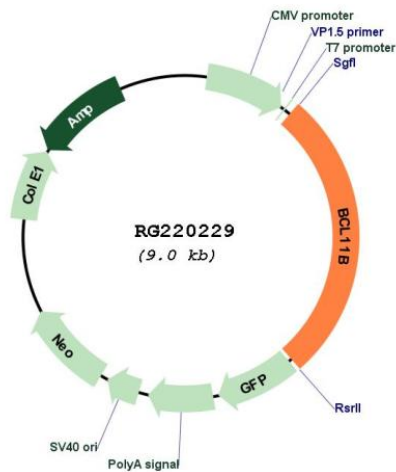
Restriction Sites: Sgfl-RsrII

Cloning Scheme:

Cloning sites used for ORF Shuttling:



Plasmid Map:



ACCN:	NM_022898
ORF Size:	2469 bp
OTI Disclaimer:	<p>Due to the inherent nature of this plasmid, standard methods to replicate additional amounts of DNA in E. coli are highly likely to result in mutations and/or rearrangements. Therefore, OriGene does not guarantee the capability to replicate this plasmid DNA. Additional amounts of DNA can be purchased from OriGene with batch-specific, full-sequence verification at a reduced cost. Please contact our customer care team at custsupport@origene.com or by calling 301.340.3188 option 3 for pricing and delivery.</p> <p>The molecular sequence of this clone aligns with the gene accession number as a point of reference only. However, individual transcript sequences of the same gene can differ through naturally occurring variations (e.g. polymorphisms), each with its own valid existence. This clone is substantially in agreement with the reference, but a complete review of all prevailing variants is recommended prior to use. More info</p>
OTI Annotation:	This clone was engineered to express the complete ORF with an expression tag. Expression varies depending on the nature of the gene.
Components:	The ORF clone is ion-exchange column purified and shipped in a 2D barcoded Matrix tube containing 10ug of transfection-ready, dried plasmid DNA (reconstitute with 100 ul of water).
Reconstitution Method:	<ol style="list-style-type: none"> 1. Centrifuge at 5,000xg for 5min. 2. Carefully open the tube and add 100ul of sterile water to dissolve the DNA. 3. Close the tube and incubate for 10 minutes at room temperature. 4. Briefly vortex the tube and then do a quick spin (less than 5000xg) to concentrate the liquid at the bottom. 5. Store the suspended plasmid at -20°C. The DNA is stable for at least one year from date of shipping when stored at -20°C.
RefSeq:	NM_022898.3
RefSeq Size:	7603 bp
RefSeq ORF:	2472 bp
Locus ID:	64919
UniProt ID:	Q9C0K0
Cytogenetics:	14q32.2
Protein Families:	Druggable Genome
Gene Summary:	<p>This gene encodes a C2H2-type zinc finger protein and is closely related to BCL11A, a gene whose translocation may be associated with B-cell malignancies. Although the specific function of this gene has not been determined, the encoded protein is known to be a transcriptional repressor, and is regulated by the NURD nucleosome remodeling and histone deacetylase complex. Four alternatively spliced transcript variants encoding distinct isoforms have been found for this gene. [provided by RefSeq, Aug 2013]</p>