

Product datasheet for **RG220227**

WHSC1 (NM_007331) Human Tagged ORF Clone

Product data:

Product Type:	Expression Plasmids
Product Name:	WHSC1 (NM_007331) Human Tagged ORF Clone
Tag:	TurboGFP
Symbol:	NSD2
Synonyms:	KMT3F; KMT3G; MMSET; REIIBP; TRX5; WHS; WHSC1
Mammalian Cell Selection:	Neomycin
Vector:	pCMV6-AC-GFP (PS100010)
E. coli Selection:	Ampicillin (100 ug/mL)



[View online »](#)

ORF Nucleotide Sequence:

>RG220227 representing NM_007331
 Red=Cloning site Blue=ORF Green=Tags(s)

TTTTGTAATACGACTCACTATAGGGCGGCCGGAATTCGTCGACTGGATCCGGTACCGAGGAGATCTGCC
 GCC**CGGATCGCC**

ATGGAATTTAGCATCAAGCAGAGTCCCCTTTCTGTTCAGAGTGTGTAAAGTGCATAAAGATGAAGCAGG
 CACCAGAAATCCTCGGCAGTGCCAACGGGAAGACTCCGAGCTGCGAGGTGAACCGCGAGTGTCTGTGTT
 CCTCAGCAAAGCCAGCTCTCCAGTAGCCTGCAGGAGGGGTCATGCAGAAGTTAACGGCCACGACGCC
 CTGCCCTTTATTCCAGCCGACAAGCTGAAAGATCTTACTTCCCGGTGTTAATGGAGAACC CGCGCAC
 ACGATGCCAAACTGCGTTTTGAGTCCCAGGAAATGAAAGGGATTGGACACCCCCAACACTACCCCTAT
 CAAAAATGGCTCTCCAGAAATTAAGCTGAAATCACCAAAACATACATGAATGGGAAGCCTCTTTTGA
 TCTTCCATTTGTGGTACAGTGTCTGTCTCAGTCAGAAGAAAATGGACAAAACCAGAAAACA
 AGGCGAGAAGGAACAGGAAGAGGAGCATAAAATATGACTCCTTGTGGAGCAGGGCCTTGTGAAGCAGC
 TCTTGTGTCTAAGATCTCAAGTCTTCAAGATAAAAAGATTCCAGCTAAGAAAGAGTCTTGTCCAAACT
 GGAAGAGACAAAGACCACCTGTTGAAATACAACGTTGGTGATTTGGTGTGGTCCAAAGTGTGGGTTACC
 CTTGGTGGCCTTGCATGGTTTCTGCAGATCCACTCCTTACAGCTATACCAAATTAAGGTGAGAAAA
 GAGTGCACGCCAGTATACGTACAGTCTTTGGTGACGCCCCAGAAAGAGCTTGGATATTTGAGAAGAGC
 CTCGTAGCTTTTGAAGGAGAAGGACAGTTTAAAAATTTGCCAGGAAAGTGCCAAGCAGGCACCCACGA
 AAGCTGAGAAAATTAAGCTATTGAAACCAATTTGAGGAAATGAGGGCCAGTGGGAAATGGGCATTGT
 TCAAGCAGAAGAAGCTGCAAGCATGTGAGTGGAGGAGCGGAAAGCAAGTTCACCTTTCTCTATGTGGG
 GACCAGCTTCACTCAACCTCAAGTAGCAAGGAGGCTGGCATTGCTGCAGAGTCTTTGGGAGAAATGG
 CAGAATCCTCAGGAGTCAGTGAAGAAGCTGTGAAAACCCCAAGTCTGTGAGAGAAGAGTGCATTTCCAT
 GAAGAGAAGGCGGAGGGCCAAACTGTGTAGCTCTGCAGAGACCCTGGAGAGTACCCCGACATAGGGAAG
 AGTACTCCTCAAAAGACGGCAGAGGCTGACCCAGAAAGAGGAGTAGGGTCTCCTCCTGGGAGGAAGA
 CCACAGTCTCCATGCCACGAAGCAGGAAGGAGATGCAGCATCCCAGTTTTTGGTCTTGTCAAAAAACA
 CAGGGATGAGGTGGTAGCTGAGCACCCAGATGCTTCAAGTGGAGAGATTGAAGAGCTGCTCAGGTACAG
 TGGAGTCTGCTGAGTGAAGCAGAGAGCAGCTACAACACCAAGTTGCCCTGGTGGCCCTGTCCAGG
 CTGAAGAAGACTCTGTAATGTAATGGGAAAAAAGAAACCACAAAAGAGGATACAGGACCCTACAGA
 AGATGCTGAAGCTGAGGACACCCAGGAAAAGACTCAGGACGGACAAGCACAGTCTTCCGAAGAGAGAC
 ACAATCACTGACAAAACGCCAGAACAGCTCTTACAAGGCCATGGAGGCAGCCTCCTCGCTCAAGAGCC
 AGGCAGCAACGAAAAATCTGTCTGATGCATGTAACCCTGAAGAAGCGAAATCGGGCTTCCACGGCAGC
 ATCTTCAGCTCTTGGTTTAGCAAAAGTTCATCTCCTTCTGCATCCTTAAGTGAAGTGAAGTAAAA

ACGCGTACGCGGCCGCTCGAG – GFP Tag – GTTTAA

Protein Sequence:

>RG220227 representing NM_007331
 Red=Cloning site Green=Tags(s)

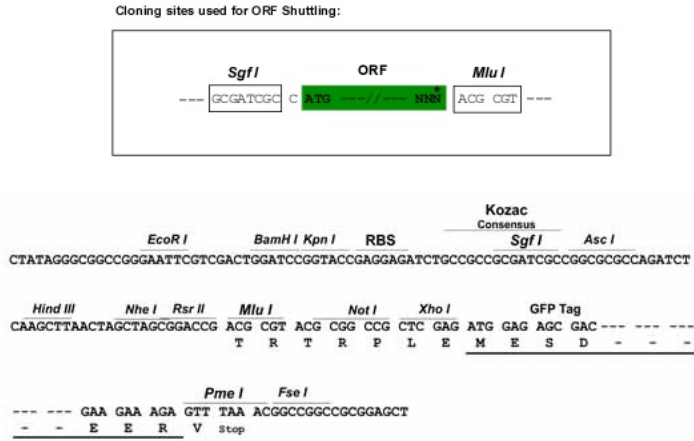
MEFSIKQSPLSVQSVVKCIKMKQAPEILGSANGKTPSCEVNRECSVFLSKAQLSSSLQEGVMQKFNHGDA
 LPFIPADKLDLTSRVFNGEPGAHDALRFESQEMKIGTTPNTPPIKNGSPEIKLKITKTYMNGKPLFE
 SSICGDSAADVQSSEENGQKPKENKARRNRKRSIKYDSLLEQGLVEALVSKISSPSDKKIPAKKESCPNT
 GRDKDHLLKYNVGDLVWSKVSGYPWWPCMSADPLLSYTKLKGQKKSARQYHVQFFGDAPERAWIFEKS
 LVAFEGEQFEKLCQESAKQAPTKAEKIKLLKPI SGKLRQWEMGIVQAEAAASMSVEERKAKFTFLYVG
 DQLHLNPQVAKEAGIAEESL GEMAESSGVSEEAENPKSVREECIPMKRRRRRAKLCSSAETLESHPDIGK
 STPQKTAEADPRRGVSGPPGRKKT TVSMRPRSRKGAASQFLVFCQKHRDEVVAEHPDASGEEIEELLRSQ
 WSLLEKQRYNTKFAVAPVQAEEDSGNVNGKRNHTKRIQDPTEDAEADTPRKRRLTDKHSRLRKR
 TITDKTARTSSYKAMEAASSLKSQAATKNLSDACKPLKRNRASTAASSALGFSKSSSPASLTENEVK

TRTRPLE – GFP Tag – V

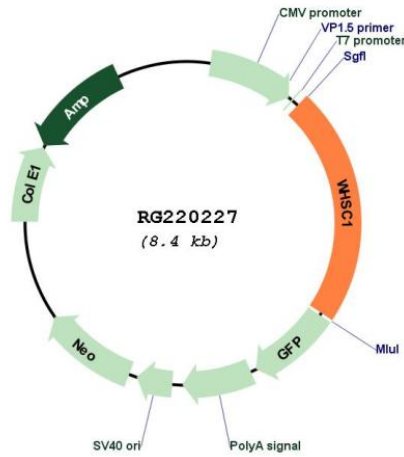
Restriction Sites:

SgfI-MluI

Cloning Scheme:



Plasmid Map:



ACCN: NM_007331
 ORF Size: 1887 bp

OTI Disclaimer:	The molecular sequence of this clone aligns with the gene accession number as a point of reference only. However, individual transcript sequences of the same gene can differ through naturally occurring variations (e.g. polymorphisms), each with its own valid existence. This clone is substantially in agreement with the reference, but a complete review of all prevailing variants is recommended prior to use. More info
OTI Annotation:	This clone was engineered to express the complete ORF with an expression tag. Expression varies depending on the nature of the gene.
Components:	The ORF clone is ion-exchange column purified and shipped in a 2D barcoded Matrix tube containing 10ug of transfection-ready, dried plasmid DNA (reconstitute with 100 ul of water).
Reconstitution Method:	<ol style="list-style-type: none">1. Centrifuge at 5,000xg for 5min.2. Carefully open the tube and add 100ul of sterile water to dissolve the DNA.3. Close the tube and incubate for 10 minutes at room temperature.4. Briefly vortex the tube and then do a quick spin (less than 5000xg) to concentrate the liquid at the bottom.5. Store the suspended plasmid at -20°C. The DNA is stable for at least one year from date of shipping when stored at -20°C.
RefSeq:	NM_007331.1 , NP_015627.1
RefSeq Size:	5172 bp
RefSeq ORF:	1890 bp
Locus ID:	7468
UniProt ID:	O96028
Cytogenetics:	4p16.3
Domains:	PWWP, HMG
Protein Families:	Druggable Genome, Transcription Factors
Protein Pathways:	Lysine degradation
Gene Summary:	This gene encodes a protein that contains four domains present in other developmental proteins: a PWWP domain, an HMG box, a SET domain, and a PHD-type zinc finger. It is expressed ubiquitously in early development. Wolf-Hirschhorn syndrome (WHS) is a malformation syndrome associated with a hemizygous deletion of the distal short arm of chromosome 4. This gene maps to the 165 kb WHS critical region and has also been involved in the chromosomal translocation t(4;14)(p16.3;q32.3) in multiple myelomas. Alternative splicing of this gene results in multiple transcript variants encoding different isoforms. Some transcript variants are nonsense-mediated mRNA (NMD) decay candidates, hence not represented as reference sequences. [provided by RefSeq, Jul 2008]