

## Product datasheet for **RG220219**

### SLC30A10 (NM\_018713) Human Tagged ORF Clone

#### Product data:

Product Type:	Expression Plasmids
Product Name:	SLC30A10 (NM_018713) Human Tagged ORF Clone
Tag:	TurboGFP
Symbol:	SLC30A10
Synonyms:	HMDPC; HMNDYT1; ZnT-10; ZNT8; ZNT10; ZRC1
Mammalian Cell Selection:	Neomycin
Vector:	pCMV6-AC-GFP (PS100010)
E. coli Selection:	Ampicillin (100 ug/mL)



[View online »](#)

**ORF Nucleotide Sequence:**

>RG220219 representing NM\_018713  
 Red=Cloning site Blue=ORF Green=Tags(s)

TTTTGTAATACGACTCACTATAGGGCGGCCGGGAATTCGTCGACTGGATCCGGTACCGAGGAGATCTGCC  
 GCC**CGCATCGCC**

ATGGGCCGCTACTCTGGCAAGACGTGCCGGCTGCTCTTCATGCTGGTGTCTCACCGTCGCCTTCTCTGTGG  
 CGGAGCTGGTCTCCGGCTACCTGGGCAACTCCATCGCGCTGCTCTCCGACTCCTTCAACATGCTCTCCGA  
 CCTGATCTCGCTGTGCGTGGGCCTGAGCGCCGGCTACATCGCCCGCGCCCCACCCGGGGCTTCAGCGCC  
 ACCTACGGCTACGCCCGCGCCGAGGTGGTGGGCGCGCTGAGCAACCGCGTCTTCTCACCGCGCTGTCT  
 TCACCATCTTCGTGGAGGCCGTGCTGCGCTGGCCCGCCGAGCGCATCGATGACCCCGAGCTGGTGTCT  
 CATCGTCGGCGTCTGGGGCTGTTGGTCAACGTGGTGGGGCTGCTCATCTTCCAGGACTGCGCCGCTGG  
 TTCGCGTGTGCTCCGGGGACGAGTCGCGCCTGCAGCAGCGGCAGCAGCTGGCGGAGGGCTGTGTCC  
 CCGGCGCTTTCGGGGGGCTCAGGGCGCGGAGGACCCCGCGCGCGCGGCGGACCCGACAGCCCCAGGCTC  
 GGACTCGGCCGTAAACCTCCGGGGGACCTCGGTGAAAGGAAGCGGGAGAAGGGGGCGACCGTGTTCGCA  
 AACGTAGCAGGTATTCTTCAACACCCAGAATGAGCCAGAAGACATGATGAAAAAGAGAAAAAGTCTG  
 AAGCTCTGAATATCAGAGGTGACTTTTGCATGTGATGGGAGATGCCCTGGGGTCCGTGGTGTGGTTCAT  
 CACGGCCATCATATTCTATGTGCTTCCCCTGAAGAGTGAGGACCCGTGTAAGTGGCAGTGTACATTGAC  
 CCCAGCCTGACTGCTCATGGTCATCATATTTTGTCTGCTTCCCGCTTATCAAGGAGACCGCTG  
 CCATTCTGCTACAGATGGTCCAAAAGGAGTCAACATGGAAGAGCTGATGAGTAACTCTCTGCTGTGCC  
 TGAATTAGCAGTGTACATGAAGTGCACATCTGGAACTTGTAAAGTGGAAAGATTATTGCCACCCGTCAC  
 ATCAAGTATCCTAAGGACAGGGGATATCAAGATGCCAGCACAAAATTCGAGAAATCTTCCACCATCGCG  
 GAATCCACAATGTACCATCCAGTTTAAAAATGTGGACTTGAAGGAACCCCTGGAGCAGAACGACTTAC  
 GTTGCTCTGCAACTCACCTGCATCTCCAAGGGCTGTGCTAAGCAGCTGTGTTGTCCCCCGGGGCACTG  
 CCTCTGGCTCACGTCAATGGCTGTGCTGAGCACAAATGGTGGGCCCTCTCTAGACACATACGGAAGTGATG  
 GCCTCAGTAGAAGAGACGCAAGAGAAGTGGCTATTGAAGTGTCTTTGGATAGCTGTCTGAGTGACCACGG  
 ACAAAGTCTTAACAAAACCTCAGGAGGACCAATGTTATGTCAACAGAACGCATTTT

**ACGCGTACGCGGCCGCTCGAG** – GFP Tag – GTTTAA

**Protein Sequence:**

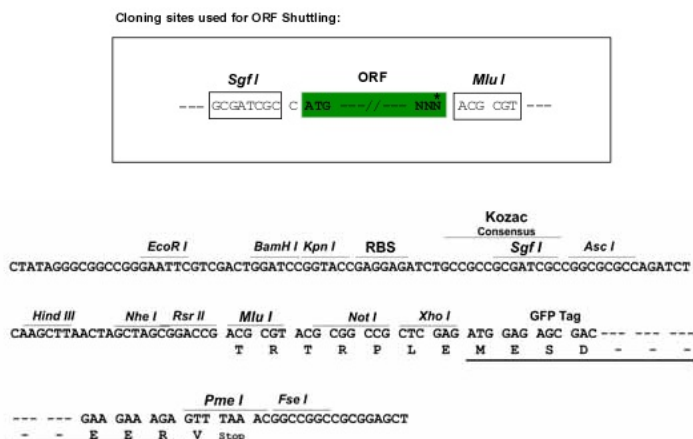
>RG220219 representing NM\_018713  
 Red=Cloning site Green=Tags(s)

MGRYSGKTCRLLFMLVLTVAFFVAELVSGYLGNSIALLSDFNMLSDLISLCVGLSAGYIARRPTRGFSA  
 TYGYARAEVVGALSNVFLTALCFITFVEAVLRLARPERIDDPVLLIVGLGLLVNVVGLLIFQDCAAW  
 FACCLRGRSRRLQQRQLAEGCVPGAFGGPQGAEDPRRAADPTAPGSDSAVTLRGT SVERKREKATVFA  
 NVAGDSFNTQNEPEDMMKKEKSEALNIRGVLLHVMGDALGSVVVVITAIIFYVLPLKSEDPCNWQCYID  
 PSLTVLMVIIILSSAFPLIKETAAILLQMPKGVNMEELMSKLSAVPGISSVHEVHIWELVSGKIIATLH  
 IKYPKDRGYQDASTKIREIFHHAGIHNVTIQFENVDLKEPLEQKDLLLLCNSPCI SKGCAKQLCCPPGAL  
 PLAHVNGCAEHNGGSLDITYGSDGLSRRDAREVAIEVSLDSCLSDHGQSLNKTQEDQCYVNRTHF

**TRTRPLE** – GFP Tag – V

**Restriction Sites:**

Sgfl-MluI

**Cloning Scheme:**


**ACCN:** NM\_018713

**ORF Size:** 1455 bp

**OTI Disclaimer:** The molecular sequence of this clone aligns with the gene accession number as a point of reference only. However, individual transcript sequences of the same gene can differ through naturally occurring variations (e.g. polymorphisms), each with its own valid existence. This clone is substantially in agreement with the reference, but a complete review of all prevailing variants is recommended prior to use. [More info](#)

**OTI Annotation:** This clone was engineered to express the complete ORF with an expression tag. Expression varies depending on the nature of the gene.

**Components:** The ORF clone is ion-exchange column purified and shipped in a 2D barcoded Matrix tube containing 10ug of transfection-ready, dried plasmid DNA (reconstitute with 100 ul of water).

**Reconstitution Method:**

1. Centrifuge at 5,000xg for 5min.
2. Carefully open the tube and add 100ul of sterile water to dissolve the DNA.
3. Close the tube and incubate for 10 minutes at room temperature.
4. Briefly vortex the tube and then do a quick spin (less than 5000xg) to concentrate the liquid at the bottom.
5. Store the suspended plasmid at -20°C. The DNA is stable for at least one year from date of shipping when stored at -20°C.

**RefSeq:** [NM\\_018713.3](#)

**RefSeq Size:** 2869 bp

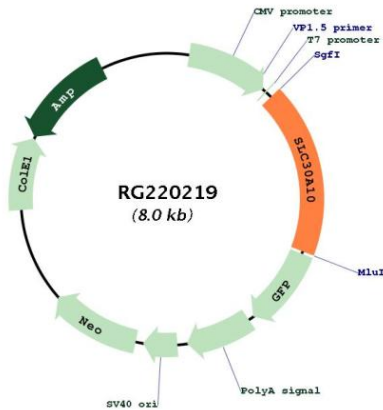
**RefSeq ORF:** 1458 bp

**Locus ID:** 55532

**UniProt ID:** [Q6XR72](#)

Cytogenetics:	1q41
Protein Families:	Transmembrane
Gene Summary:	This gene is highly expressed in the liver and is inducible by manganese. Its protein product appears to be critical in maintaining manganese levels, and has higher specificity for manganese than zinc. Loss of function mutations appear to result in a pleomorphic phenotype, including dystonia and adult-onset parkinsonism. Alternatively spliced transcript variants have been observed for this gene. [provided by RefSeq, Mar 2012]

### Product images:



Circular map for RG220219