

## Product datasheet for **RG220207**

### Plzf (ZBTB16) (NM\_001018011) Human Tagged ORF Clone

#### Product data:

Product Type:	Expression Plasmids
Product Name:	Plzf (ZBTB16) (NM_001018011) Human Tagged ORF Clone
Tag:	TurboGFP
Symbol:	ZBTB16
Synonyms:	PLZF; ZNF145
Mammalian Cell Selection:	Neomycin
Vector:	pCMV6-AC-GFP (PS100010)
E. coli Selection:	Ampicillin (100 ug/mL)



[View online »](#)

ORF Nucleotide  
Sequence:

>RG220207 representing NM\_001018011  
 Red=Cloning site Blue=ORF Green=Tags(s)

TTTTGTAATACGACTCACTATAGGGCGGCCGGGAATTCGTCGACTGGATCCGGTACCGAGGAGATCTGCC  
 GCCCGCATCGCC

ATGGATCTGACAAAAATGGGCATGATCCAGCTGCAGAACCTAGCCACCCACGGGGCTACTGTGCAAGG  
 CCAACCAGATGCGGCTGGCCGGGACTTTGTGCGATGTGGTCATCATGGTGACAGCCAGGAGTTCCACGC  
 CCACCGGACGGTCTGGCCTGCACCAGCAAGATGTTTGAGATCCTCTTCCACCGCAATAGTCAACTAT  
 ACTTTGGACTTCTCTCGCCAAAGACCTTCCAGCAGATTCTGGAGTATGCATATACAGCCACGCTGCAAG  
 CCAAGGCGGAGGACCTGGATGACCTGCTGTATGCGGCCGAGATCCTGGAGATCGAGTACCTGGAGGAACA  
 GTGCTGAAGATGCTGGAGACCTCCAGGCCTCAGACGACAATGACACGGAGGCCACCATGGCCGATGGC  
 GGGGCCGAGGAAGAAGAGGACCGCAAGGCTCGGTACCTCAAGAACATCTTCATCTCGAAGCATTCCAGCG  
 AGGAGAGTGGGTATGCCAGTGTGGCTGGACAGAGCCTCCCTGGGCCATGGTGGACCAGAGCCCTTCAGT  
 CTCACCTTCATTTGGTCTTTCAGCCATGAGTCCCACCAAGGCTGCAGTGGACAGTTTGATGACCATAGGA  
 CAGTCTCTCCTGCAGGGAACCTTCAGCCACCTGCAGGGCCCGAGGAGCCAACTCTGGCTGGGGGTGGGC  
 GGCACCTTGGGGTGGCTGAGGTGAAGACGGAGATGATGCAGGTGGATGAGGTGCCAGCCAGGACAGCCC  
 TGGGGCAGCCGAGTCCAGCATCTCAGGAGGGATGGGGGACAAGGTTGAGGAAAGAGGCAAAGAGGGGCT  
 GGGACCCCGACTCGAAGCAGCGTCATCACCAGTGTAGGGAGCTACACTATGGGCGAGAGGAGAGTGCCG  
 AGCAGGTGCCACCCCGACTGAGGCTGGCCAGGCCCCACTGGCCGACCTGAGCACCAGCACCCTCCGCT  
 TGAGAAGCATCTGGGCATCTACTCCGTGTTGCCAACCACAAGGCTGACGCTGTATTGAGCATGCCGTCT  
 TCCGTGACCTCTGGCCTCCAGTGCAGCCTGCCCTGGCTGTCTCCATGGACTTCAGCACCTATGGGGGGC  
 TGCTGCCCGAGGGCTTCATCCAGAGGGAGCTGTTGAGCAAGCTGGGGGAGCTGGCTGTGGGCATGAAGTC  
 AGAGAGCCGGACCATCGGAGAGCAGTGCAGCGTGTGTGGGTCGAGCTTCTGATAACGAGGCTGTGGAG  
 CAGCACAGGAAGCTGCACAGTGGGATGAAGACGTACGGGTGCGAGCTCTGCGGGAAGCGGTTCTGGATA  
 GTTTGCGGCTGAGAAATGCACTTACTGGCTCATTACGCGGGTGCCAAAGCCTTTGTCTGTGATCAGTGCGG  
 TGCACAGTTTTGGAAGGAGGATGCCCTGGAGACACACAGGCAGACCCATACTGGCACTGACATGGCCGTC  
 TTCTGTCTGTGTGGGAAGCGCTTCCAGGCGCAGAGCGCACTGCAGCAGCACATGGAGGTCCACGCGG  
 GCGTGCGCAGCTACATCTGCAGTGAAGTCAACCGCACCTTCCCAGCCACACGGCTCTCAAACGCCACCT  
 GCGCTCACATACAGGCGACCACCCTACGAGTGTGAGTTCTGTGGCAGCTGCTTCCGGGATGAGAGCACA  
 CTAAGAGCCACAAACGCATCCACACGGGTGAGAAACCCTACGAGTGCAATGGCTGTGGCAAGAAGTTCA  
 GCCTCAAGCATCAGCTGGAGACGCACTATAGGGTGACACAGGTGAGAAGCCCTTTGAGTGAAGCTCTG  
 CCACCAGCGCTCCCGGGACTACTCGGCCATGATCAAGCACCTGAGAACGCACAACGGCGCCTCGCCCTAC  
 CAGTGCACCATCTGCACAGAGTACTGCCCCAGCCTCTCCTCCATGCAGAAGCACATGAAGGGCCACAAGC  
 CCGAGGAGATCCCGCCGACTGGAGGATAGAGAAGACGTACCTCTACCTGTGCTATGTG

ACGCGTACGCGGGCCGCTCGAG - GFP Tag - GTTTAA

Protein Sequence: >RG220207 representing NM\_001018011  
 Red=Cloning site Green=Tags(s)

MDLTKMGMIQLNPSHTGLLCKANQMRLAGTLCDDVIMVDSQEFHAHRTVLACTSKMFEILFHRNSQHY  
 TLDFLSPKTFQQILEYAYATLQAKAEDLDDL YAAEILEIEYLEEQCLKMLETIQASDDNDTEATMADG  
 GAEEEEERKARYLKNIFI SKHSSEESGYASVAGQSLPGPMVDQSPSVSTSFGLSAMSPTKAAVDSLMTIG  
 QSLLQGTLPAGPEEPTLAGGGRHPGVAEVKTEMMQVDEVP SQDSPGAAESSISGGMGDKVEERGKEGP  
 GTPTRSSVITSARELHYGREESAEQVPPAEAGQAPTGRPEHPAPPPEKHLGIYSVLPNHKADAVLSMPS  
 SVTSGLVHQPALAVSMDFSTYGGLLPQGF IQRELFSKLGELAVGMKSESRTIGEQCSCVGVLPDNEAVE  
 QHRKLSHGKTYGCELCGKRFLDSLRLRMHLLAHSAGAKAFVCDQCGAQFSKEDALETHRQHTHTGDMAV  
 FLLCGKRFQAQSALQQHMEVHAGVRSYICSECNRTFPSHTALKRHLRSHTGDHPYCEFCGSCFRDEST  
 LKSHKRIHTGEKPYECNGCGKFS LKHQLETHYRVHTGEKPFECKLCHQSRDYSAMIKHLRTHNGASPY  
 QCTICTEYCPSSLSSMQKHMKGHKPEEIPPDWRIEKTYLYLCYV

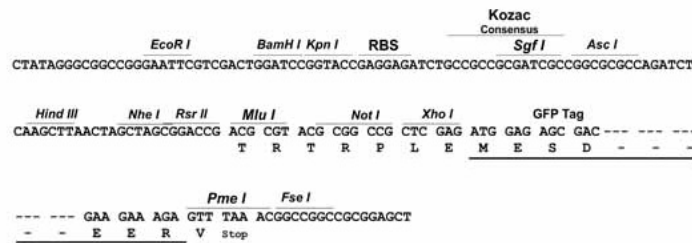
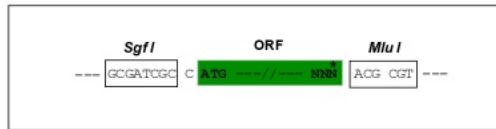
TRTRPLE - GFP Tag - V

Restriction Sites:

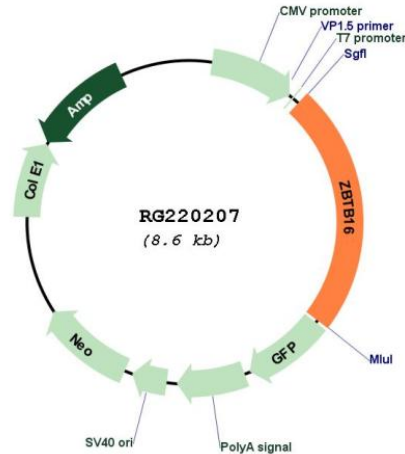
SgfI-MluI

Cloning Scheme:

Cloning sites used for ORF Shuttling:



## Plasmid Map:



ACCN: NM\_001018011

ORF Size: 2019 bp

OTI Disclaimer: The molecular sequence of this clone aligns with the gene accession number as a point of reference only. However, individual transcript sequences of the same gene can differ through naturally occurring variations (e.g. polymorphisms), each with its own valid existence. This clone is substantially in agreement with the reference, but a complete review of all prevailing variants is recommended prior to use. [More info](#)

OTI Annotation: This clone was engineered to express the complete ORF with an expression tag. Expression varies depending on the nature of the gene.

Components: The ORF clone is ion-exchange column purified and shipped in a 2D barcoded Matrix tube containing 10ug of transfection-ready, dried plasmid DNA (reconstitute with 100 ul of water).

Reconstitution Method:

1. Centrifuge at 5,000xg for 5min.
2. Carefully open the tube and add 100ul of sterile water to dissolve the DNA.
3. Close the tube and incubate for 10 minutes at room temperature.
4. Briefly vortex the tube and then do a quick spin (less than 5000xg) to concentrate the liquid at the bottom.
5. Store the suspended plasmid at -20°C. The DNA is stable for at least one year from date of shipping when stored at -20°C.

RefSeq: [NM\\_001018011.2](#)

RefSeq Size:	2262 bp
RefSeq ORF:	2022 bp
Locus ID:	7704
UniProt ID:	<a href="#">Q05516</a>
Cytogenetics:	11q23.2
Protein Families:	Druggable Genome, Transcription Factors
Protein Pathways:	Acute myeloid leukemia, Pathways in cancer
Gene Summary:	<p>This gene is a member of the Krueppel C2H2-type zinc-finger protein family and encodes a zinc finger transcription factor that contains nine Kruppel-type zinc finger domains at the carboxyl terminus. This protein is located in the nucleus, is involved in cell cycle progression, and interacts with a histone deacetylase. Specific instances of aberrant gene rearrangement at this locus have been associated with acute promyelocytic leukemia (APL). Alternate transcriptional splice variants have been characterized. [provided by RefSeq, Jul 2008]</p>