

Product datasheet for **RG220194**

ASB9 (NM_024087) Human Tagged ORF Clone

Product data:

Product Type:	Expression Plasmids
Product Name:	ASB9 (NM_024087) Human Tagged ORF Clone
Tag:	TurboGFP
Symbol:	ASB9
Mammalian Cell Selection:	Neomycin
Vector:	pCMV6-AC-GFP (PS100010)
E. coli Selection:	Ampicillin (100 ug/mL)
ORF Nucleotide Sequence:	>RG220194 representing NM_024087 Red=Cloning site Blue=ORF Green=Tags(s)

TTTTGTAATACGACTCACTATAGGGCGGCCGGAATTCGTCGACTGGATCCGGTACCGAGGAGATCTGCC
GCC**CGATCGCC**

ATGGATGGCAAACAAGGGGGCATGGATGGGAGCAAGCCCGGGGGCCAAGGGACTTTCCTGGCATCAGGC
TTCTTTCAAACCCATTGATGGGCGATGCTGTGTCTGATTGGTCTCCTATGCATGAAGCTGCAATCCACGG
ACATCAGCTGTCTCTGAGGAACCTCATCAGCCAGGGGTGGGCTGTGAACATCATCAGGCAGATCATGTT
TCCCCACTCCATGAAGCCTGTCTTGGAGGTCATCTCTTGTGTGAAGATTTTATTAAGCATGGAGCTC
AGGTGAATGGTGTGACAGCAGACTGGCACACTCCACTGTTTAATGCTTGTGTGTCAGCGGCAGCTGGGATTG
TGTGAATTTGCTTCTGCAGCACGGAGCCAGCGTTCAACCTGAGAGTGATCTGGCATCCCCATCCATGAA
GCTGCTAGGAGAGGCCACGTGGAGTGTGTCAACTCTTATAGCTTATGGGGCAACATTGACCATAAGA
TCAGCCACCTGGGCACTCCACTCTATTTGGCTTGTGAAAACCAACAGAGAGCCTGTGTAAGAAGCTTCT
GGAGTCAGGAGCGGACGTGAACCAAGGGAAAGGTCAGGATTCCCCACTTCATGCAGTGGCCAGGACAGCC
AGTGAAGAGCTGGCCTGCCTGCATGGATTTGGAGCGGACACCAGGCCAAGAATGCTGAAGGCAAAC
GTCCTGTGGAGCTGGTGCCTCCAGAGAGCCCCTTGGCCAGCTCTTCTTGGAGAGAGAAGGTGCTTCTTT
GCCAAAACCTAAGCCC

ACGCGTACGCGGCCGCTCGAG - GFP Tag - GTTTAA



[View online »](#)

Protein Sequence: >RG220194 representing NM_024087
Red=Cloning site Green=Tags(s)

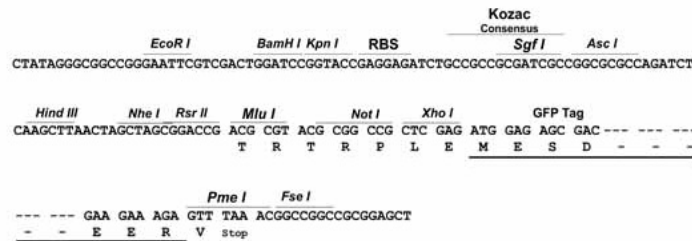
MDGKQGGMDGSKPAGPRDFPGIRLLSNPLMGDAVSDWSPMHEAAIHGHQLSLRNLISQGWAVNIITADHV
 SPLHEACLGHLSCVKILLKHGAQVNGVTADWHTPLFNACVSGSWDCVNLQLHGASVQPESDLASPIHE
 AARRGHVECVNSLIAYGGNIDHKISHLGTPLYLACENQQRACVKKLLESGADVNOGKGDQDSPLHAVARTA
 SEELACLLMDFGADTQAKNAEGKRPVELVPPEPLAQLFLEREGASLPPKPKP

TRTRPLE - GFP Tag - V

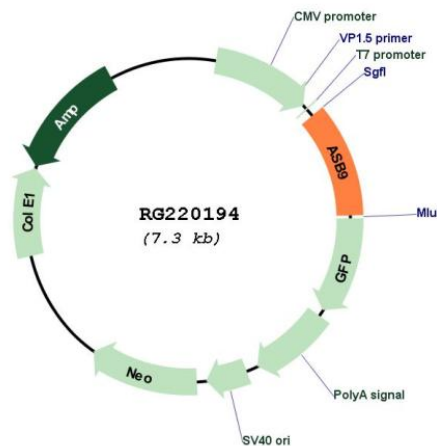
Restriction Sites: SgfI-MluI

Cloning Scheme:

Cloning sites used for ORF Shuttling:



Plasmid Map:



ACCN: NM_024087

ORF Size: 786 bp

OTI Disclaimer:	The molecular sequence of this clone aligns with the gene accession number as a point of reference only. However, individual transcript sequences of the same gene can differ through naturally occurring variations (e.g. polymorphisms), each with its own valid existence. This clone is substantially in agreement with the reference, but a complete review of all prevailing variants is recommended prior to use. More info
OTI Annotation:	This clone was engineered to express the complete ORF with an expression tag. Expression varies depending on the nature of the gene.
Components:	The ORF clone is ion-exchange column purified and shipped in a 2D barcoded Matrix tube containing 10ug of transfection-ready, dried plasmid DNA (reconstitute with 100 ul of water).
Reconstitution Method:	<ol style="list-style-type: none">1. Centrifuge at 5,000xg for 5min.2. Carefully open the tube and add 100ul of sterile water to dissolve the DNA.3. Close the tube and incubate for 10 minutes at room temperature.4. Briefly vortex the tube and then do a quick spin (less than 5000xg) to concentrate the liquid at the bottom.5. Store the suspended plasmid at -20°C. The DNA is stable for at least one year from date of shipping when stored at -20°C.
RefSeq:	NM_024087.3
RefSeq Size:	1775 bp
RefSeq ORF:	789 bp
Locus ID:	140462
UniProt ID:	Q96DX5
Cytogenetics:	Xp22.2
Protein Families:	Druggable Genome
Gene Summary:	This gene encodes a member of the ankyrin repeat and suppressor of cytokine signaling (SOCS) box protein family. Members of this family can interact with the elongin B-C adapter complex via their SOCS box domain and further complex with the cullin and ring box proteins to form E3 ubiquitin ligase complexes. They may function to mediate the substrate-recognition of the E3 ubiquitin ligases. A transcribed pseudogene of this gene has been identified on chromosome 15. Multiple transcript variants encoding different isoforms have been found for this gene. [provided by RefSeq, Dec 2009]