

Product datasheet for **RG220193**

C17orf101 (OGFOD3) (NM_024648) Human Tagged ORF Clone

Product data:

Product Type:	Expression Plasmids
Product Name:	C17orf101 (OGFOD3) (NM_024648) Human Tagged ORF Clone
Tag:	TurboGFP
Symbol:	C17orf101
Synonyms:	C17orf101
Mammalian Cell Selection:	Neomycin
Vector:	pCMV6-AC-GFP (PS100010)
E. coli Selection:	Ampicillin (100 ug/mL)
ORF Nucleotide Sequence:	>RG220193 representing NM_024648 Red=Cloning site Blue=ORF Green=Tags(s)

TTTTGTAATACGACTCACTATAGGGCGGCCGGAATTCGTCGACTGGATCCGGTACCGAGGAGATCTGCC
GCC**CGATCGCC**

ATGGCTCCTCAGCGGAGGGCCGCAACCAAGGCGCCGAGGGCAACGGAGCGGCCGAGCGCCGGAACCGGA
GCAGCACCAAGAAGGACCGAGCCCCGCGGGAGGTGCAGAGGCTGTGGCAGAGGCCGTGGCTAAGGACCGC
GGGCTGGGGCTGGCTTTGTGCTCACCCTCCTGCTCTGGAGCAGCTTGGGGCCGACGACGGGGT
GCAGAGGTCCTGGCCCGCGTGGCAGGTCGTGGCAGGGAGATTCATCGAGGTGCCCTGCTCTGAGGACT
ACGACAGTCACCGCAGGTTCAAGGCTGCACTCCCGAAAAGTGGCGCAGAGGTGTCACCGATGTCGTCAT
CACCAGGAGGAAGCGGAGCGGATTCGCAGCGTAGCTGAAAAGGGGCTCTCCCTGGGAGGATCTGACGGA
GGGCATCCATTCTGACTTGCCTCAGGGCCCTGTCTGTGCGGAAGCACTTTGTGAACCTGTACAGAT
ACTTCGGGATAAAAATACAGAACATCTTCTCAGAGGAGGACTTCCGGTTATACCGGAGGTGCGGCAGAA
GGTCCAGCTCACCATTGCTGAGGCTTTTGGCATCAGCGCATCCTCGCTGCATCTGACCAAGCCACCTTC
TTCTCCGCATAAACAGCACGGAAGCGCGGACGGCGCACGACGAGTACTGGCATGCGCACGTGGACAAGG
TGACCTACGGCTCCTTCGACTACACCTCGCTGTACCTCTCCAACCTACCTGGAGGACTTCGGCGGAGG
GCGGTTTCATGTTTCATGGAGGAGGGTGCCAAACAGCGGTGGAGCCGAGAGCTGGTCGCGTCTCCTTCTTC
ACCTCGGGTCCGAGAACCTACACCGCTGGAGAAGGTCCACTGGGGCACCCGTTACGCCATCACCATCG
CCTTCAGCTGCAACCCGACCATGGCATCGAGGACCCAGCGTTCCCG

ACGCGTACGCGGCCGCTCGAG - GFP Tag - GTTTAA



[View online »](#)

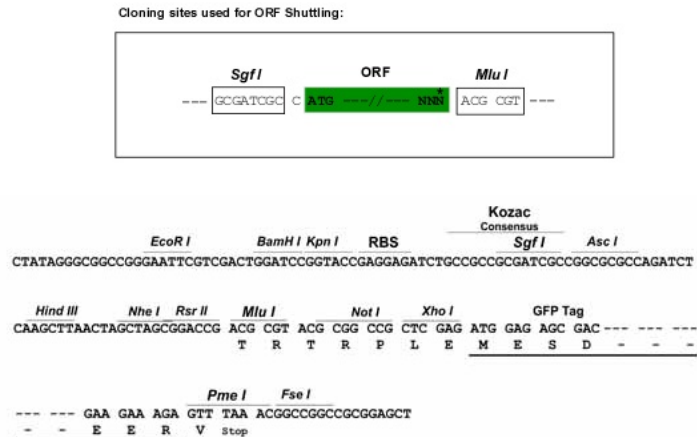
Protein Sequence: >RG220193 representing NM_024648
 Red=Cloning site Green=Tags(s)

```
MAPQRRRAATKAPEGNGAAERRNRSSTKKDRAPREVQRLWQRPWLRTAGLGAGFVLTALLWSSLGADDGV
AEVLARRGEVAVAGRFIEVPCSEYDSSHRRFEGCTPRKCGRGVTDVVITREEAERIRSVAEKGLSLGGSDG
GASILDLHSGALSVGKHFVNLRYFYGDKIQNIFSEEDFRLYREVRQKVQLTIAEAFGISASSLHLTKPTF
FSRINSTEARTAHDEYWHAHVDKVITYGSFDYTSLLYLSNYLEDFGGGRFMFMEEGANKTVEPRAGRVSFF
TSGSENLHRVEKVHWGTRYAITIAFSCNPDHGIEDPAFP
```

TRTRPLE - GFP Tag - V

Restriction Sites: SgfI-MluI

Cloning Scheme:



ACCN: NM_024648

ORF Size: 957 bp

OTI Disclaimer: The molecular sequence of this clone aligns with the gene accession number as a point of reference only. However, individual transcript sequences of the same gene can differ through naturally occurring variations (e.g. polymorphisms), each with its own valid existence. This clone is substantially in agreement with the reference, but a complete review of all prevailing variants is recommended prior to use. [More info](#)

OTI Annotation: This clone was engineered to express the complete ORF with an expression tag. Expression varies depending on the nature of the gene.

Components: The ORF clone is ion-exchange column purified and shipped in a 2D barcoded Matrix tube containing 10ug of transfection-ready, dried plasmid DNA (reconstitute with 100 ul of water).

Reconstitution Method:

1. Centrifuge at 5,000xg for 5min.
2. Carefully open the tube and add 100ul of sterile water to dissolve the DNA.
3. Close the tube and incubate for 10 minutes at room temperature.
4. Briefly vortex the tube and then do a quick spin (less than 5000xg) to concentrate the liquid at the bottom.
5. Store the suspended plasmid at -20°C. The DNA is stable for at least one year from date of shipping when stored at -20°C.

RefSeq: [NM_024648.3](#)

RefSeq Size: 1255 bp

RefSeq ORF: 960 bp

Locus ID: 79701

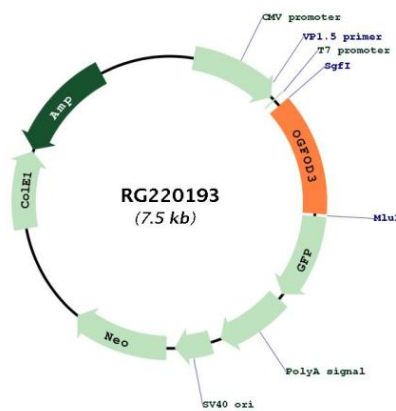
UniProt ID: [Q6PK18](#)

Cytogenetics: 17q25.3

Domains: P4Hc

Protein Families: Transmembrane

Product images:



Circular map for RG220193