

## Product datasheet for **RG220180**

### **SORBS1 (NM\_001034956) Human Tagged ORF Clone**

#### **Product data:**

Product Type:	Expression Plasmids
Product Name:	SORBS1 (NM_001034956) Human Tagged ORF Clone
Tag:	TurboGFP
Symbol:	SORBS1
Synonyms:	CAP; FLAF2; R85FL; SH3D5; SH3P12; SORB1
Mammalian Cell Selection:	Neomycin
Vector:	pCMV6-AC-GFP (PS100010)
E. coli Selection:	Ampicillin (100 ug/mL)



[View online »](#)

**ORF Nucleotide Sequence:**

>RG220180 representing NM\_001034956  
 Red=Cloning site Blue=ORF Green=Tags(s)

TTTTGTAATACGACTCACTATAGGGCGGCCGGGAATTCGTCGACTGGATCCGGTACCGAGGAGATCTGCC  
 GCC**CGCATCGCC**

ATGAGTTCGAATGTGATGGTGGTTCCAAAGCTGTGATGAATGGCTTGGCACCTGGCAGCAATGGGCAAG  
 ACAAAGCAACTGCCGACCCCTTACGCGCAGCTCTATTTCTGCTGTTAAAATCATTCTGTGAAGACAGT  
 GAAAAACGCCTCAGGCCTAGTTCTCCCTACAGACATGGATCTACAAAAATCTGCACTGGGAAGGGAGCG  
 GTGACTCTCCGGGCTCGTCTTCTACAGGGAAACCCCAAGCAGTAGCCCTGCGAGCCCTCAGGAAACCC  
 GGCAACACGAAAGCAAACCAGGTCTGGAGCCAGAGCCCTTCTCAGCAGATGAGTGGAGGCTTTCTCCAG  
 TGCTGATGCCAATGAAAATGCCAGCCCTTCTCACTCGCTGCCAAGGGCTACAGAAAGTGTGCATCCCAAC  
 CTTCTTCTGACAAGTCCAGAGGTGGCCCCACCACAGCCAGCCAGCCCGCGCTCTGGCTCTTTGCC  
 CCATTAGCCAGAGCCACCATCCTTCTCACCACCCTCCGCTGGTCCCTCTGCCCGGAGGACCTCCG  
 CAGAGTCTCGGAGCCTGACCTCACGGGAGCTGTTTCGAGTACCGATTCCAGTCTCTACTAAATGAAGTT  
 TCTTCTCCCTTATTGGAAGTATTCCCAAGCCTTCCATCAGTTAGCAAGCCTTATCCGCCTATCCCT  
 CCACAACGATTGTCAATCCTACTATTGTGCTCTTGCAACACAATCGAGAACAGCAAAAAAGACTCAGTAG  
 CCTTTCAGATCCTGTCTCAGAAAAGAGTGGGAGAGCAGGACTCAGACCAACCCAGGAAAAACCCACC  
 TCACCTGGCAAGGCTATTGAAAAAGAGCAAAGGATGACAGTAGGCGGGTGGTGAAGAGCACTCAGGACT  
 TAAGCGATGTTTCCATGGATGAAGTGGGCATCCCACTCCGGAACACTGAGAGATCAAAGACTGGTACAA  
 GACTATGTTTAAACAGATCCACAACTGAACAGAGATGATGATTCAGATCTGACTCTCCAGATACTCA  
 TTTTCTGAAGACAAAACTCTCCCTTTCTGTGCCTCGCTCAAAAAGTGAAGTACATTGATGGTG  
 AGAAGGTAGTCAAGAGGTGGCCCACTACCCCTCCAGCCCGCTTCTCCTCACTGAAGTCAAGTCAAGT  
 AAGAAATGACTGGGAACCCAGATAAGAAAGTAGACACAAGAAAAATATCGTGCAGAGCCCAAGAGCATT  
 TACGAATATCAGCCTGGCAAGTCTTCCGTTCTGACCAACGAAAAGATGAGTCGGGATATAAGCCAGAAG  
 AGATAGATTTAAAGAATGAACCTTGGTATAAAATCTTTTCGGAATTGGAGTTTGGGAAACCGCTCCCAA  
 AAAGATATGGGATTATACTCCTGGAGACTGCTCTATCCTTCTAGAGAGGATAGAAAAGAGCTCAGCCATC  
 AGCCCTACTCCGAAATTTCTCAGAGACTCCTGGATATATATTTCTTCCAACCTCCATGCAGTGAAGA  
 GGGAAATCAGACGGGGCTCCTGGGATCTCACTAGCTTGGAGAATGAGAGACAAATTTATAAAAGTGTCTT  
 GGAAGGTGGTACATCCCTTTCAGGGCTGAGTGGGCTCAAGCGACCATCCAGCTCTGCTTCCACTAAA  
 GATTCAGAATCGCAAGACATTTTATACCAGCTGATTACTTGGAAATCCACGGAAGATTTATTGGAAGAC  
 GTCATGATGATAAAGAGAACTTTTAGCGGACCAGAGACGACTTAAACCGGAGCAAGAAGAGGCTGATAT  
 TGCAGCTCGACGCCACACAGGCGTCATTCCGACGCACCATCAGTTTATCACTAATGAGCGCTTTGGGGAC  
 CTCCTCAATATAGACGATACTGCAAAAAGGAAATCTGGGTGAGAGATGAGACCTGCCAGAGCCAAATTTG  
 ACTTTAAAGCTCAGACACTAAAGGAGCTTCTCTGCAGAAGGGAGATATTGTTTACATTTATAAGCAAAT  
 TGATCAGAAGTGGTATGAAGGAGAACACCACGGCCGGTGGGAATCTTCCACGCACCTACATCGAGCTT  
 CTTCTCTGCTGAGAAGGCACAGCCAAAAAGTTGACACCAGTGCAGGTTTTGGAATATGGAGAAGCTA  
 TTGCTAAGTTAACTTTAATGGTATACACAAGTAGAAATGTCTTCAGAAAGGGTGAGAGGATCACACT  
 GCTCCGGCAGGTAGATGAGAAGTGGTACGAAGGGAGGATCCCAGGGGACATCCCGACAAGGCATCTTCCC  
 ATCACCTACGTGGATGTGATCAAGCGACCACTGGTGAAAAACCCTGTGGATTACATGGACCTGCCTTCT  
 CCTCTCCCAAGTCGCAAGTCCACTGCAAGCCACAGCTTTCTCATCATTGAGAGCAGGACCAGA  
 TCTCACAGAATCTGAAAAGAGCTATGTGCAACCTCAAGCCAGCAGCGAAGAGTCAACCCCGACAGGAGT  
 CAAACCTCACAAGATTTATTTAGCTATCAAGCATTATATAGCTATATACCACAGAATGATGATGAGTTGG  
 AACTCCGCGATGGAGATATCGTTGATGTCATGGAAAAATGTGACGATGGATGGTTTTGTTGGTACTTCAAG  
 AAGGACAAAGCAGTTTGGTACTTTCCAGGCAACTATGTAACCTTTGTATCTA

**ACGCGTACGCGGCCGCTCGAG** - GFP Tag - **GTTTAA**

**Protein Sequence:** >RG220180 representing NM\_001034956  
 Red=Cloning site Green=Tags(s)

```

MSSECDGGSKAVMNGLAPGSNGQDKATADPLRARSISAVKIIPVKTVKNASGLVLPDMDPTKICTGKGA
VTLRASSSYRETPSSSPASPQETRQHEKPGLEPEPSSADEWRLSSSADANGNAQPSSLAAGYRSVHPN
LPSDKSQRWPHHSQPARASGSFAPISQTPPSFSPPPPPLVPPAPEDLRRVSEPDLTGAVSSTDSSPLLNEV
SSSLIGTDSQAFPSVSKPSSAYPSTTIIVNPTIIVLLQHNREQQKRLSSLDPVSERRVGEQDSAPTQEKPT
SPGKAIEKRAKDDSRVVKSTQDLSDVSMDEVGIPLRNTERSKDWYKTMFKQIHKLNRRDDSDLYSPRYS
FSEDTKSPLSVPRKSEMSYIDGKVVKRSATLPLPARSSSLKSSSERNDWEPDPKVDTRKYRAEPKSI
YEYQPGKSSVLNEKMSRDISPEEIDLKNEPWYKFFSELEFGKPPPKIWDYTPGDSCILPREDRKSSAI
SPTPEISSETPGYIYSSNFHAVKRESDGAPGDLTSLENERQIYKSVLEGGDIPLQGLKRPSSSASTK
DSESPRHFIPADYLESTEEFIRRRHDDKEKLLADQRRLKREQEEADIAARRHTGVIPTHHQFITNERFGD
LLNIDDTAKRKSSEMPPARAKDFKAQTLKELPLQKGDIVYIYKQIDQNWYEGEHHGRVGIPTRYIIEI
LPPAEKAQPKKLTPVQVLEYGEIAKFNFGDTQVEMSFRRKGERITLLRQVDENWYEGRIPGTSRQGIFF
ITYYVDVIKRPLVKNPVDYMDLPFSSSPRSATASPQLSHHSLRAGPDLTESEKSYVQPQAQRRVTPDRS
QTSQDLFSYQALYSYIPQNDDELELRDGDIVDMKCCDDGWFVGTSRRTKQFGTFPGNYVKPLYL
  
```

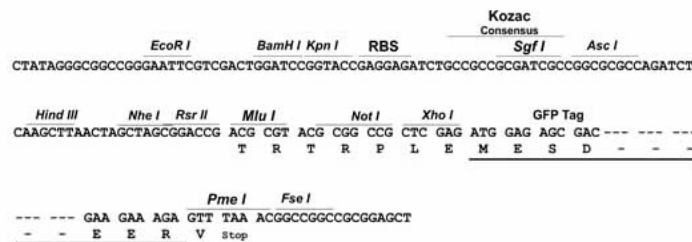
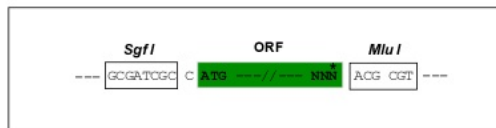
TRTRPLE - GFP Tag - V

**Restriction Sites:**

Sgfl-MluI

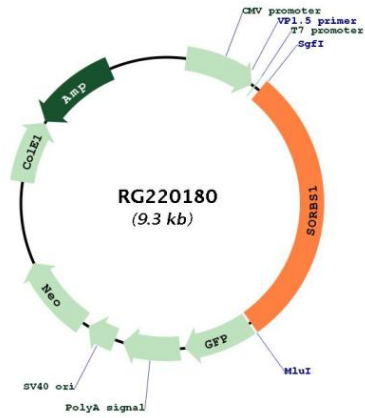
**Cloning Scheme:**

Cloning sites used for ORF Shuttling:



<b>ACCN:</b>	NM_001034956
<b>ORF Size:</b>	2715 bp
<b>OTI Disclaimer:</b>	The molecular sequence of this clone aligns with the gene accession number as a point of reference only. However, individual transcript sequences of the same gene can differ through naturally occurring variations (e.g. polymorphisms), each with its own valid existence. This clone is substantially in agreement with the reference, but a complete review of all prevailing variants is recommended prior to use. <a href="#">More info</a>
<b>OTI Annotation:</b>	This clone was engineered to express the complete ORF with an expression tag. Expression varies depending on the nature of the gene.
<b>Components:</b>	The ORF clone is ion-exchange column purified and shipped in a 2D barcoded Matrix tube containing 10ug of transfection-ready, dried plasmid DNA (reconstitute with 100 ul of water).
<b>Reconstitution Method:</b>	<ol style="list-style-type: none"><li>1. Centrifuge at 5,000xg for 5min.</li><li>2. Carefully open the tube and add 100ul of sterile water to dissolve the DNA.</li><li>3. Close the tube and incubate for 10 minutes at room temperature.</li><li>4. Briefly vortex the tube and then do a quick spin (less than 5000xg) to concentrate the liquid at the bottom.</li><li>5. Store the suspended plasmid at -20°C. The DNA is stable for at least one year from date of shipping when stored at -20°C.</li></ol>
<b>RefSeq:</b>	<a href="#">NM_001034956.1</a> , <a href="#">NP_001030128.1</a>
<b>RefSeq Size:</b>	6065 bp
<b>RefSeq ORF:</b>	2718 bp
<b>Locus ID:</b>	10580
<b>UniProt ID:</b>	<a href="#">Q9BX66</a>
<b>Cytogenetics:</b>	10q24.1
<b>Protein Families:</b>	Druggable Genome
<b>Protein Pathways:</b>	Adherens junction, Insulin signaling pathway, PPAR signaling pathway
<b>Gene Summary:</b>	This gene encodes a CBL-associated protein which functions in the signaling and stimulation of insulin. Mutations in this gene may be associated with human disorders of insulin resistance. Alternative splicing results in multiple transcript variants. [provided by RefSeq, Mar 2014]

Product images:



Circular map for RG220180