

## Product datasheet for **RG220173**

### PTGER3 (NM\_198715) Human Tagged ORF Clone

#### Product data:

Product Type:	Expression Plasmids
Product Name:	PTGER3 (NM_198715) Human Tagged ORF Clone
Tag:	TurboGFP
Symbol:	PTGER3
Synonyms:	EP3; EP3-I; EP3-II; EP3-III; EP3-IV; EP3-VI; EP3e; Inc003875; PGE2-R
Mammalian Cell Selection:	Neomycin
Vector:	pCMV6-AC-GFP (PS100010)
E. coli Selection:	Ampicillin (100 ug/mL)
ORF Nucleotide Sequence:	>RG220173 representing NM_198715 Red=Cloning site Blue=ORF Green=Tags(s)

TTTTGTAATACGACTCACTATAGGGCGGCCGGAATTCGTCGACTGGATCCGGTACCGAGGAGATCTGCC  
GCC**CGATCGCC**

ATGAAGGAGACCCGGGGCTACGGAGGGGATGCCCCCTTCTGCACCCGCCTCAACCACTCCTACACAGGCA  
TGTGGGCGCCGAGCGTTCCGCCGAGGCGGGGCAACCTCACGCGCCCTCCAGGGTCTGGCGAGGATTG  
CGGATCGGTGTCCTGGCCTTCCCGATCACCATGCTGCTCACTGGTTTCGTGGGCAACGCACTGGCCATG  
CTGCTCGTGTGCGCAGCTACCGGCGCCGGAGAGCAAGCAGAAGTCCTTCTGCTGTGCATCGGCT  
GGCTGGCGCTCACCGACCTGGTCGGCAGCTTCTCACCACCCGGTCGTCATCGTCGTGTACCTGTCCAA  
GCAGCGTTGGGAGCACATCGACCCGTCGGGGCGGCTCTGCACCTTTTCGGGCTGACCATGACTGTTTTTC  
GGGCTCTCCTCGTTGTTTCATCGCCAGCGCCATGGCCGTCGAGCGGGCGCTGGCCATCAGGGCGCCGCACT  
GGTATGCGAGCCACATGAAGACGCGTGCCACCCGCGCTGTGCTGCTCGGCGTGTGGCTGGCCGTCGCTCGC  
CTTCGCCCTGCTGCCGCTGCTGGGCGTGGGCCAGTACACCGTCCAGTGGCCCGGGACGTGGTGTTCATC  
AGCACCGGGCGAGGGGCAACGGGACTAGCTCTTCGCATAACTGGGGCAACCTTTTCTTCGCTCTGCT  
TTGCCCTCCTGGGGCTCTGGCGCTGACAGTCACTTTTCTGCAACCTGGCCACCATTAAGGCCCTGGT  
GTCCCGCTGCCGGGCAAGGCCACGGCATCTCAGTCCAGTGGCCAGTGGGCGCCATCACGACCGAGACG  
GCCATTACGCTTATGGGATCATGTGCTGCTGTCGGTCTGCTGGTCTCCGCTCCGATAATGATGTTGA  
AAATGATCTTCAATCAGACATCAGTTGAGCACTGCAAGACACACGGAAGCAGAAAGAATGCAACTT  
CTTCTTAATAGCTGTTCCGCTGGCTTCACTGAACCAGATCTGGATCCTTGGGTTTACCTGCTGTTAAGA  
AAGATCTTCTCGAAAGTTTGGCAGGTAGCAAATGCTGCTCCAGCTGCTCTAATGATGGACAGAAAG  
GGCAGCCTATCTCATTATCTAATGAAATAATACAGACAGAAGCA

AGCGGACCGACGCGTACGCGGCCGCTCGAG - GFP Tag - GTTTAA



[View online »](#)

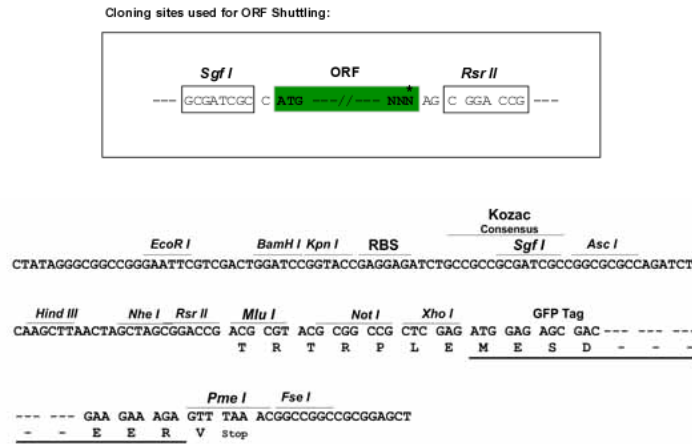
**Protein Sequence:** >RG220173 representing NM\_198715  
 Red=Cloning site Green=Tags(s)

MKETRGYGGDAPFCTRLNHSYTMWAPERSAEARGNLTRPPGSGEDCGSVSVAFPIITMLLTGFVGNALAM  
 LLVRSRYRRRESKRKKSFLLCIGWLAL TDLVGQLL TTPVVIVVYL SKQRWEHIDPSGRLCTFFGLTMTVF  
 GLSSLF IASAMAVERALAIRAPHWYASHMKTRATRAVL LGVWLAVLAFALLPVLGVGQYTVQWPWTWCFI  
 STGRGGNGTSSSHNWGNLFFASAF AFLG LLLALTVTFSCNLATIKALVSRCAKATASQSSAQWGRITTET  
 AIQLMGIMCVLSVCWSP LLIMMLKMI FNQTSVEHCKTHTEKQKECNF FLI AVRLASLNQILD PWVYLLLR  
 KILLRKFCQVANAVSSCSNDGQKGQPI SLSNEIIQTEA

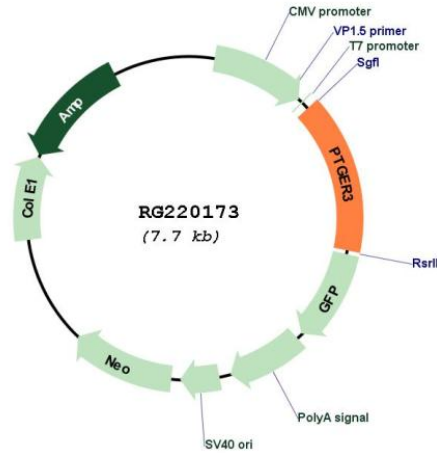
SGPTRRRLE - GFP Tag - V

**Restriction Sites:** SgfI-RsrII

**Cloning Scheme:**



**Plasmid Map:**



**ACCN:** NM\_198715

<b>ORF Size:</b>	1164 bp
<b>OTI Disclaimer:</b>	The molecular sequence of this clone aligns with the gene accession number as a point of reference only. However, individual transcript sequences of the same gene can differ through naturally occurring variations (e.g. polymorphisms), each with its own valid existence. This clone is substantially in agreement with the reference, but a complete review of all prevailing variants is recommended prior to use. <a href="#">More info</a>
<b>OTI Annotation:</b>	This clone was engineered to express the complete ORF with an expression tag. Expression varies depending on the nature of the gene.
<b>Components:</b>	The ORF clone is ion-exchange column purified and shipped in a 2D barcoded Matrix tube containing 10ug of transfection-ready, dried plasmid DNA (reconstitute with 100 ul of water).
<b>Reconstitution Method:</b>	<ol style="list-style-type: none"><li>1. Centrifuge at 5,000xg for 5min.</li><li>2. Carefully open the tube and add 100ul of sterile water to dissolve the DNA.</li><li>3. Close the tube and incubate for 10 minutes at room temperature.</li><li>4. Briefly vortex the tube and then do a quick spin (less than 5000xg) to concentrate the liquid at the bottom.</li><li>5. Store the suspended plasmid at -20°C. The DNA is stable for at least one year from date of shipping when stored at -20°C.</li></ol>
<b>RefSeq:</b>	<a href="#">NM_198715.3</a>
<b>RefSeq Size:</b>	2468 bp
<b>RefSeq ORF:</b>	1167 bp
<b>Locus ID:</b>	5733
<b>UniProt ID:</b>	<a href="#">P43115</a>
<b>Cytogenetics:</b>	1p31.1
<b>Protein Families:</b>	Druggable Genome, GPCR, Transcription Factors, Transmembrane
<b>Protein Pathways:</b>	Calcium signaling pathway, Neuroactive ligand-receptor interaction
<b>Gene Summary:</b>	The protein encoded by this gene is a member of the G-protein coupled receptor family. This protein is one of four receptors identified for prostaglandin E2 (PGE2). This receptor may have many biological functions, which involve digestion, nervous system, kidney reabsorption, and uterine contraction activities. Studies of the mouse counterpart suggest that this receptor may also mediate adrenocorticotrophic hormone response as well as fever generation in response to exogenous and endogenous stimuli. Multiple transcript variants encoding different isoforms have been found for this gene. [provided by RefSeq, Aug 2009]