

Product datasheet for **RG220138**

Dystrophia myotonica protein kinase (DMPK) (NM_001081563) Human Tagged ORF Clone

Product data:

Product Type:	Expression Plasmids
Product Name:	Dystrophia myotonica protein kinase (DMPK) (NM_001081563) Human Tagged ORF Clone
Tag:	TurboGFP
Symbol:	Dystrophia myotonica protein kinase
Synonyms:	DM; DM1; DM1PK; DMK; MDPK; MT-PK
Mammalian Cell Selection:	Neomycin
Vector:	pCMV6-AC-GFP (PS100010)
E. coli Selection:	Ampicillin (100 ug/mL)



[View online »](#)

ORF Nucleotide Sequence:

>RG220138 representing NM_001081563
 Red=Cloning site Blue=ORF Green=Tags(s)

TTTTGTAATACGACTCACTATAGGGCGGCCGGGAATTCGTCGACTGGATCCGGTACCGAGGAGATCTGCC
 GCC**CGGATCGCC**

ATGGGAGGGCATTTTTGGCCCCAGAACCTTACACGGTGTATGTGGGAAGCCCTGGGAAGCAGACA
 GTCTAGGGTGAAGCTGAGAGGCAGAGAGAAGGGGAGACAGACAGAGGGTGGGGCTTCCCCTTGTCTC
 CAGTGCCTTTCTGGTGACCCTCGGTTCTTTTCCCCACCACCCCCAGCGGAGCCCATCGTGGTGAGG
 CTTAAGGAGGTCCGACTGCAGAGGGACGACTTCGAGATTCTGAAGGTGATCGGACGCGGGGCGTTACGCG
 AGGTAGCGGTAGTGAAGATGAAGCAGACGGCCAGGTGTATGCCATGAAGATCATGAACAAGTGGGACAT
 GCTGAAGAGGGGCGAGGTGTCGTGCTTCCGTGAGGAGAGGGACGTGTTGGTGAATGGGGACCGCGGTGG
 ATCACGCAGCTGCACTTCGCCTCCAGGATGAGAACTACCTGTACCTGGTATGGAGTATTACGTGGGCG
 GGGACCTGCTGACTGCTGAGCAAGTTTGGGGAGCGGATTCGGCCGAGATGGCGCGCTTCTACCTGGC
 GGAGATTGTCATGGCCATAGACTCGGTGCACCGGCTTGGCTACGTGCACAGGGACATCAAACCCGACAAC
 ATCCTGTGGACCGCTGTGGCCACATCCGCTGGCCGACTTCGGCTCTTGCTCAAGCTGCGGGCAGATG
 GAACGGTGCAGTGCCTGGTGGTGTGGGCACCCAGACTACCTGTCCCCGAGATCCTGCAGGCTGTGGG
 CGGTGGGCTGGGACAGGCAGCTACGGGCCGAGTGTGACTGGTGGGCGCTGGGTGTATTCGCCTATGAA
 ATGTTCTATGGGCAGACGCCCTTCTACGCGGATTCACGCGGAGACCTATGGCAAGATCGTCCACTACA
 AGGAGCACCTCTCTGCCGCTGGTGGACGAAGGGTCCCTGAGGAGGCTCGAGACTTATTACAGCGGTT
 GCTGTGTCCCCGGAGACACGGCTGGCCGGGGTGGAGCAGGCGACTTCGGACACATCCCTTCTCTTT
 GGCCTCGACTGGGATGGTCTCCGGGACAGCGTGCCTTTTACACCGGATTTGAAAGGTGCCACCGACA
 CATGCAACTTCGACTTGGTGGAGGACGGGCTCACTGCCATGGTGAAGCGGGGCGGGAGACATGTCGGA
 CATTTCGGGAAGGTGCGCCGCTAGGGGTCCACTGCCTTTTGTGGGCTACTCTACTCCTGCATGGCCCTC
 AGGGACAGTGAGGTCCCAGGCCACACCCATGGAAGTGGAGGCCGAGCAGCTGCTTGAAGCACACGTGC
 AAGCGCCAGCCTGGAGCCCTCGGTGTCCACAGGATGAAACAGCTGAAGTGGCAGTTCACGCGGCTGT
 CCCTGCGGAGAGGCTGAGGCGGAGGTGACGCTGCGGGAGCTCCAGGAAGCCCTGGAGGAGGAGGTGCTC
 ACCCGGCAGAGCCTGAGCCGGGAGATGGAGGCCATCCGCACGGACAACCAGAAGTTCGCCAGTCACTAC
 GCGAGGCAGAGGCTCGGAACCGGACCTAGAGGCACACGTCGGCAGTTGCAGGAGCGGATGGAGTTGCT
 GCAGGCAGAGGGAGCCACAGCTGTACGGGGTCCCAGTCCCCGGGCCAGGATCCACCTCCCATCTA
 GATGGCCCCCGCCGTGGCTGTGGCCAGTGCCTGCTGGGGCCAGGCCCATGCACCGCCGCCACC
 TGCTGCTCCCTGCCAGGGTCCCTAGGCCTGGCCTATCGGAGGCGCTTCCCTGCTCTGTCGCGGTTGT
 TCTGTCTCGTGCCGCGCCCTGGGCTGCATTGGGTTGGTGGCCACGCCGCAACTCACCGCAGTCTGG
 CGCCGCCAGGAGCCGCCGCGCTCCC

ACGCGTACGCGGCCGCTCGAG - GFP Tag - GTTTAA

Protein Sequence:

>RG220138 representing NM_001081563
 Red=Cloning site Green=Tags(s)

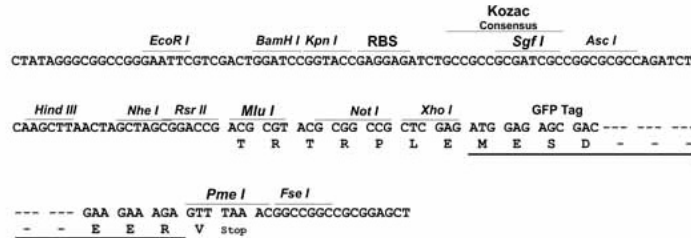
MGGHFWPPEPYTFVMWGWSPWEADSPRVKLRGREGRQTEGGAFPLVSSALSGDPRFFSPTTPPAEPIVVR
 LKEVRLQRDDFEILKVIIRGAFSEVAVVKMKQTGQVYAMKIMNKWDMLEKREVSDFREERDVLVNGDRRW
 ITQLHFAFQDENLYLVMEYYVGGDLLTLLSKFGERIPAEMARFYLAIEVMAIDSVHRLGYVHRDIKPDN
 ILLDRCGHIRLADFGSCLKLRADGTVRSLVAVGTPDYLSPHILQAVGGGPGTGSYGPEDWVWALGVFAYE
 MFYQTPFYADSTAETYGKIVHYKEHLSLPLVDEGVPEEARDFIQRLCPPETRLGRGGAGDFRTHPFFF
 GLDWDGLRDSVPPFTPDFEGATDTCNFDLVEDGLTAMVSGGGETLSDIREGAPLVHLPFVGYSSCMAL
 RDSEVPGPTPMELEAEQLLEPHVQAPSLEPSVSPQDETAEVAVPAAVPAEAEAEVTLRELQEALVEEVL
 TRQSLSREMEAIRTDNQNFASQLREAEARNRDLAHRVQLQERMELLQAEGATAVTGVPSPRATDPPSHL
 DGPPAVAVGQCPLVGGPMPHRRHLLLPARVPRPGLSEALSLLLFAVVL SRAAALGCIGLVAHAGQLTAVV
 RRPGAARAP

TRTRPLE - GFP Tag - V

Restriction Sites: Sgfl-MluI

Cloning Scheme:

Cloning sites used for ORF Shutting:



ACCN: NM_001081563

ORF Size: 1917 bp

OTI Disclaimer: The molecular sequence of this clone aligns with the gene accession number as a point of reference only. However, individual transcript sequences of the same gene can differ through naturally occurring variations (e.g. polymorphisms), each with its own valid existence. This clone is substantially in agreement with the reference, but a complete review of all prevailing variants is recommended prior to use. [More info](#)

OTI Annotation: This clone was engineered to express the complete ORF with an expression tag. Expression varies depending on the nature of the gene.

Components: The ORF clone is ion-exchange column purified and shipped in a 2D barcoded Matrix tube containing 10ug of transfection-ready, dried plasmid DNA (reconstitute with 100 ul of water).

Reconstitution Method:

1. Centrifuge at 5,000xg for 5min.
2. Carefully open the tube and add 100ul of sterile water to dissolve the DNA.
3. Close the tube and incubate for 10 minutes at room temperature.
4. Briefly vortex the tube and then do a quick spin (less than 5000xg) to concentrate the liquid at the bottom.
5. Store the suspended plasmid at -20°C. The DNA is stable for at least one year from date of shipping when stored at -20°C.

RefSeq: [NM_001081563.2](#)

RefSeq Size: 3261 bp

RefSeq ORF: 1920 bp

Locus ID: 1760

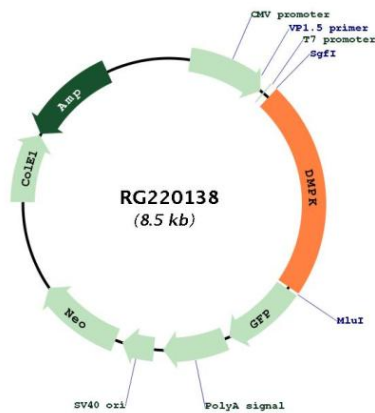
UniProt ID: [Q09013](#)

Cytogenetics: 19q13.32

Protein Families: Druggable Genome, Protein Kinase

Gene Summary: The protein encoded by this gene is a serine-threonine kinase that is closely related to other kinases that interact with members of the Rho family of small GTPases. Substrates for this enzyme include myogenin, the beta-subunit of the L-type calcium channels, and phospholemman. The 3' untranslated region of this gene contains 5-38 copies of a CTG trinucleotide repeat. Expansion of this unstable motif to 50-5,000 copies causes myotonic dystrophy type I, which increases in severity with increasing repeat element copy number. Repeat expansion is associated with condensation of local chromatin structure that disrupts the expression of genes in this region. Several alternatively spliced transcript variants of this gene have been described, but the full-length nature of some of these variants has not been determined. [provided by RefSeq, Jul 2016]

Product images:



Circular map for RG220138