

Product datasheet for **RG220105**

CLASP2 (NM_015097) Human Tagged ORF Clone

Product data:

Product Type: Expression Plasmids
 Product Name: CLASP2 (NM_015097) Human Tagged ORF Clone
 Tag: TurboGFP
 Symbol: CLASP2
 Mammalian Cell Selection: Neomycin
 Vector: pCMV6-AC-GFP (PS100010)
 E. coli Selection: Ampicillin (100 ug/mL)
 ORF Nucleotide Sequence: >RG220105 representing NM_015097
 Red=Cloning site Blue=ORF Green=Tags(s)

TTTTGTAATACGACTCACTATAGGGCGGCCGGGAATTCGTCGACTGGATCCGGTACCGAGGAGATCTGCC
 GCC**CGATCGCC**

ATGGAGCCCCGAGCATGGAGTACTTCTGCGCCAGGTGCAGCAGAAGGACGTGGCGGCCGGCTGCAGG
 TCGGCCAGGAGCTCCTGCTCTACCTTGGCGCCCCGGCGCCATCTCGGACCTGGAGGAGGACCTGGGCCG
 CCTAGGCAAGACAGTCGACGCGCTCACC GGCTGGGTTCGAGCAACTACCGGTATCATTAAATGGGA
 TTGGAAATTTAAGTGCCTTTGTGGACAGATTATCAACACGCTTTAAATCCTATGTAGCAATGGTTATTG
 TAGCTTTAATAGACAGAATGGGAGATGCCAAAGACAAGTTTCGAGATGAAGCTCAGACTGTATTTGAA
 GTTAATGGATCAAGTAGCACCACCTATGTACATTTGGGAGCAGTTGGCTTCTGGTTTTAAACACAAGAAT
 TTTCGATCTCGAGAAGGCGTGTCTGTGTCTTATTGAAACCTTAAACATTTTTGGGGCTCAGCCACTAG
 TCATCAGCAAATGATACCACATTTGTGTATCCTGTTGGAGACTCCAACAGTCAGGTGAGAGATGCTGC
 AATATTGGCTATAGTGGAGATTTATAGACATGTGGGAGAAAAAGTGAGGATGGATCTTTATAAGAGAGGA
 ATTCCCCTGCTAGATTAGAAATGATATTTGCCAAATTTGATGAAGTGCAAAGTTCAGGCCGATGATTT
 TGAGTGTCTGCAAAGATAAAAGCTTCGATGATGAAGAATCAGTGGATGGAATAGGCCATCATCAGCTGC
 ATCAGCCTTCAAGGTTCTGCACCTAAAACATCCGAAATCCTGCCAACAGTGAAGGAAGCCTGGTTCA
 GCAGGTGGCCCTAAGGTTGGAGGTGCTTCTAAGGAAGGAGGTGCTGGAGCAGTTGATGAAGATGATTTTA
 TAAAAGCTTTTACAGATGTCCTTCTATTAGATTTATTCTAGTCGAGAAGCTCGAAGAAACATTAATAA
 AATCAGGGAAATTTGTGATGATAAACATGACTGGGATCAGCGTGCCAATGCACTGAAGAAAATTCGA
 TCACTGCTTGTGCTGGAGCTGCACAGTATGATTGCTTTTTTCAACATTTACGATTGTTGGATGGAGCAC
 TTAACATTTTCAGTAAGGATCTTAGATCCCAGGTGGTTAGAGAAGCTTGTATTACTGTAGCCACCTTTT
 AACAGTTTTGGGAAACAAGTTTGTATCATGGCGCTGAAGCCATTGTACCTACACTTTTTAATCTCGTCCCC
 AATAGTGCAAAAGTCATGGCACTTCTGGATGTGCAGCAATCAGATTTATCATTCCGCATACTCATGTAC
 CCAGACTTATACCTTTAATAACAAGCAATTGCACATCAAATCAGTTCCTGAGGAGAGCATTGTTGAA
 ATTTTTAGATTTATTGTTGCAAGAGTGGCAGACTCATTATTGAAAGACATGCAGCCGCTTTGGTTGAA
 ACTATTAAGGAAATTCATGATGCTGACGCTGAGGCCAGAGTGGAGGCAAGAAAGACATCATGGGTC
 TTAGAAACCACTTCTGGTGAAGCTGAAACATTATATAATTCCCTTGGCCATCTTATCAGAAGAGTCT



[View online >](#)

TCAAACCTACTTAAAGAGTTCTGGCAGTGTAGCATCTCTCCACAATCAGACAGGTCTCATCCAGCTCA
CAGGAAAGTCTCAATCGCCCTTTTTCTTCCAAATGGTCTACAGCAATCCATCAACTGTGGCTGGAAGAG
TATCAGCAGGCAGCAGCAAAGCCAGTCCCTTCCAGGAAGCCTGCAGCGTTCACGAAGTGACATTGATGT
GAATGCTGCTGCAGGTGCCAAGGCACATCATGCTGCTGGACAGTCTGTGCGAAGCGGGCGCTTAGGTGCA
GGTGCCCTGAATGCAGGTTCTATGCGTCACTAGAGGATACTTCTGACAAGCTGGATGGAACAGCATCTG
AAGATGGCCGGGTGAGAGCAAACTTTCCAGCACCATTGCTGGCATGGGAAATGCCAAGGCAGATTCTAG
AGGAAGAAGTCGAACAAAATGGTGTCTCAATCACAGCCTGGTAGCCGGTCTGGTCTCCAGGAAGAGTT
CTGACCACAACAGCCCTGTCCACTGTGAGCTCTGGTGTTCAAAGAGTCCTGGTCAATTCAGCCTCAGCAC
AAAAAAGAAGCAAGATACCACGGAGCCAGGGCTGTAGCAGAGAGGCTAGTCCATCTAGGCTTTCAGTGGC
CCGAAGCAGTCGTATTCCTCGACCAAGTGTGAGTCAAGGATGCAGCCGGGAAGCTAGTCGGGAGAGCAGC
AGAGACACAAGTCTGTTCGCTCTTTCCAGCCCTCGTCCAGGTTATGGGATCAGCCAATCAAGTCGAC
TGTGCTCTTCTGTAGTCCATGCGAGTCTGAACACAGGTTCTGATGTGGAGGAGGCGGTGGCAGATGC
CTTGAAAAACCAGCTCGAAGAAGATATGAATCATATGGAATGCATTAGATGATGACGCCAACAGCGAT
GCATCTAGTGCTTGTTCAGAACGCTCCTATAGTCTCGAAATGGTAGTATTCCTACATATATGAGGCAGA
CGGAAGATGTGGCAGAAGTCTCAATAGATGTGCTAGTCCAATTGGTGCAGAAAGGAAAGAGGCCCTCCT
AGGTCTGCAGAACTTATTAATAAATCAGAGAACCTAAGTCGAGTTGAACTGAAAAGATTATGTGAATT
TTCACAAGAATGTTTGTGACCCTCATGGCAAGAGAGTATTCAGCATGTTTTGGAGACTTAGTGGATT
TCATACAAGTCCACAAAGATGATCTTCAAGATTGGTTGTTTGTACTGCTGACACAACCTACTAAAAAAAT
GGGTGCTGATTTGCTTGGATCTGTTCCAGCAAAAGTTCAGAAAGCCCTTGATGTTACAAGAGAGTCTTTT
CCAAATGATCTTCAGTTCATATTTCTAATGAGATTTACAGTTGATCAGACCCAGACACCAAGCTTAAAGG
TGAAGGTTGCTATCCTTAAATACATAGAACTCTGGCCAAACAGATGGATCCAGGAGATTTTATAAATTC
CAGTGAACCTCGCTAGCAGTGTCTCGGGTCATCACTTGGACAACAGAACCCAAAAGTTCTGATGTTCCG
AAGGCACACAGTCAGTGTCTTATTTGAACTCAATACCCAGAGTTTACAATGTTATTAGGAG
CTTTACCAAAAACCTTTTTCAGGATGGTGTCTACCAAGCTTCTTATAATCACCTTCGAAACACTGGCAATGG
AACCCAGAGTTCCATGGGGAGTCTTTGACAAGACCAACACCAGATCACCAGCTAACTGGTCCAGTCTCT
CTTACTCTCCTACCAATACATCACAGAATACTTTATCTCCAAGTGCATTTGATTATGACACAGAAAATA
TGAAGTCTGAAGATATTTATAGCTCTCTTAGAGGTGTCACTGAAGCAATCCAGAATTTCCAGTTCGGTAG
CCAAGAAGATATGAATGAGCCATTGAAAAGGGATTCTAAAAAGATGATGGCGATTCAATGTGTGGTGGT
CCTGGGATGTCTGACCAAGAGCAGGAGGTGATGCTACTGACTCAAGTCAAACAGCTCTTGATAATAAAG
CTTCATTGCTCCATTCAATGCCTACTCCTCTCCAGCTCTCGAGACTATAATCCATATAACTATTC
AGATAGCATCAGTCCCTCAACAAGTCTGCCCTCAAGGAAGCCATGTTTGTATGATGATGCTGACCAGTTT
CCTGACGATCTTCCCTAGATCATTCTGACCTAGTTGCAGAGTTGTTGAAGGAGCTGTCTAACCATAAATG
AGCGTGTAGAAGAAAGAAAAATTGCCCTCTATGAACTTATGAACTGACACAGGAAGAATCTTTTAGTGT
TTGGGATGAACACTTCAAAAATATTGCTTTTATTGCTTGAACGCTTGGAGATAAAGAGCCTACAATC
AGGGCTTTGGCATTAAAGGTTTTAAGAGAAATCCTAAGGCATCAACCAGCAAGATTTAAAAACTATGCAG
AATTGACTGTGATGAAAACATTGGAAGCACATAAAGATCCTCATAAGGAGGTGGTGAAGTCTGCTGAGGA
AGCGGCATCAGTGTGGCCACTCAATTAGTCCAGAGCAGTGCATCAAAGTGCTTTGCTCATATTCAA
ACTGCAGACTACCAATTAATCTGGCTGCAATCAAAATGCAAACAAAAGTATAGAGAGAGTGTCCAAGG
AAACCCATAACCTGCTTTTGGCAGAGATTATGCCAGGTCTAATACAGGGTTATGATAATTCAGAGAGCAG
TGTTCCGAAAGCTTGTGCTTCTGCCTGGTGGCTGTTTCATGCGGTAATTGGTGTGAACTAAAACCAT
CTCAGTCAACTTACTGGCAGTAAAATGAAGCTACTGAATCTTTACATCAAACGTGCACAAACAGGTTCTG
GAGGAGCTGATCCCACTACTGATGTTTCTGGACAAAGT

ACGCGTACGCGGCCGCTCGAG - GFP Tag - GTTTAA

Protein Sequence: >RG220105 representing NM_015097
 Red=Cloning site Green=Tags(s)

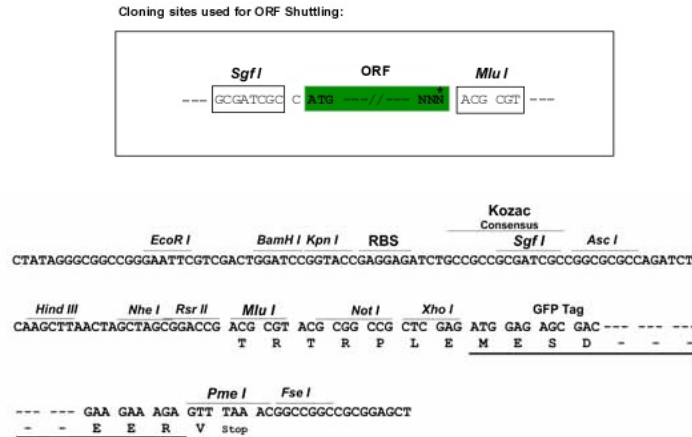
```
MEPRSMEYFCAQVQKDVGGRLQVQQLLLYLGAIPAISDLEEDLGRLGKTVDALTGWVGSSNYRVSLMG
LEILSAFVDRLSTRFKSYVAMVIVALIDRMGDAKDKVRDEAQTLLKLMQVAPPMYIWEQLASGFKHKN
FRSREGVCLCL IETLNIFGAQPLVISKLIPHLICILFGDSNSQVRDAAILAIVEIYRHVGEKVRMDLYKRG
IPPARLEMIFAKFDEVQSSGGMILSVCKDKSFDDEESVDGNRPSSAASAFKVPAPKTSGNPANSARKPGS
AGGPKVGGASKEGGAGAVDEDDFKAFITDVPSIQIYSSRELEETLNKIREILSDDKHDWDQRANALKKIR
SLLVAGAAQYDCFFQHLRLLDGALKLSAKDLRSQVVREACITVAHLSTVLGNKFDHGAEIIVPTLFLNLP
NSAKVMATSGCAAIRFIIRHTHVPRLIPLITSNCTSKSVPVRRRSFEFLDLLLQEWQTHSLERHAAVLVE
TIKKGIDADAEARVEARKTYMGLRNHFPGEAETLYNSLEPSYQKSLQTYLKSSGSVASLPQSDRSSSSS
QESLNRPFSSKWSTANPSTVAGRVSAGSSKASSLPGSLQRSRSDIDVNAAGAKAHHAAAGQSVRSRGLGA
GALNAGSYASLEEDTSKLDGTASEDGRVRAKLSAPLAGMGNKADSRGRSRTKMVSQSQPGSRSGSPGRV
LTTTALSTVSSGVQRLVNSASAQKRKIPRSQGCRESASPSRLSVARSSRIIPRSVVSQGCRESASRESS
RDTSPVRSFQPLGPGYGISQSSRLSSSVSAMRVLNTGSDVEEAVADALKKPARRRYESYGMHSDDDANS
ASSACRSYSSRNGSIPTYMRQTEVAEVLNRCASSNWSERKEGLLGLQNLKKNQRTLSRVELKRLCEI
FTRMFADPHGKRVFSMFLETLVDFIQVHKDDLQDWLFLVLLTQLLKKMGADLLGSVQAKVQKALDVTRESF
PNDLQFNILMRFTVDQTQTPSLKVKVAILKYIETLAKQMDPGDFINSETRLAVSRVITWTTEPKSSDVR
KAAQSVLISL FELNTP EFTMLL GALPKTFQDGATKLLHNHLRNTGNGTQSSMGSP LTRPTPRSPANWSSP
LTSPNTS QNTLSPSAFDYDTENMNSEDIYSSLRGVTEAIQNF SFRSQEDMNEPLKRD SKKDDGDSMCGG
PGMSDPRAGG DATSSQTALDNKASLLHSMPTHSSPRSRDYNPNYSDSISPFNK SALKEAMFDDADQF
PDDLSDHSDLVAELLKELSNHNERVEERKIALYELMKLTQEESF SVWDEHFKTI LLLLLLETLGDKPTI
RALALPKVLEILRHQPARFKNYAELVMKTL EAHKDPHKEVVRSAEEAASVLATSI SPEQCICKVLCPIIQ
TADYPINLAAIKMQTKVIERVSKETLNL LLLPEIMPGLIQGYDNSESSVRKACVFLVAVHAVIGDELKPH
LSQLTGSKMKLLNLYIKRAQTGGGADPTTDVSGQS
```

TRTRPLE - GFP Tag - V

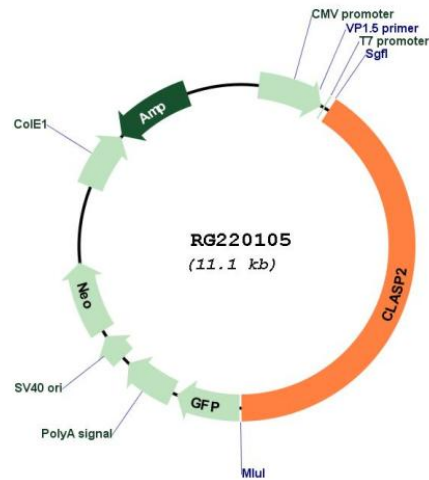
Restriction Sites:

SgfI-MluI

Cloning Scheme:



Plasmid Map:



ACCN: NM_015097

ORF Size: 4518 bp

OTI Disclaimer: Due to the inherent nature of this plasmid, standard methods to replicate additional amounts of DNA in *E. coli* are highly likely to result in mutations and/or rearrangements. Therefore, OriGene does not guarantee the capability to replicate this plasmid DNA. Additional amounts of DNA can be purchased from OriGene with batch-specific, full-sequence verification at a reduced cost. Please contact our customer care team at custsupport@origene.com or by calling 301.340.3188 option 3 for pricing and delivery.

The molecular sequence of this clone aligns with the gene accession number as a point of reference only. However, individual transcript sequences of the same gene can differ through naturally occurring variations (e.g. polymorphisms), each with its own valid existence. This clone is substantially in agreement with the reference, but a complete review of all prevailing variants is recommended prior to use. [More info](#)

OTI Annotation:	This clone was engineered to express the complete ORF with an expression tag. Expression varies depending on the nature of the gene.
Components:	The ORF clone is ion-exchange column purified and shipped in a 2D barcoded Matrix tube containing 10ug of transfection-ready, dried plasmid DNA (reconstitute with 100 ul of water).
Reconstitution Method:	<ol style="list-style-type: none">1. Centrifuge at 5,000xg for 5min.2. Carefully open the tube and add 100ul of sterile water to dissolve the DNA.3. Close the tube and incubate for 10 minutes at room temperature.4. Briefly vortex the tube and then do a quick spin (less than 5000xg) to concentrate the liquid at the bottom.5. Store the suspended plasmid at -20°C. The DNA is stable for at least one year from date of shipping when stored at -20°C.
RefSeq:	NM_015097.1 , NP_055912.1
RefSeq Size:	7289 bp
RefSeq ORF:	4548 bp
Locus ID:	23122
UniProt ID:	O75122
Cytogenetics:	3p22.3
Gene Summary:	<p>Microtubule plus-end tracking protein that promotes the stabilization of dynamic microtubules (PubMed:26003921). Involved in the nucleation of noncentrosomal microtubules originating from the trans-Golgi network (TGN). Required for the polarization of the cytoplasmic microtubule arrays in migrating cells towards the leading edge of the cell. May act at the cell cortex to enhance the frequency of rescue of depolymerizing microtubules by attaching their plus-ends to cortical platforms composed of ERC1 and PHLDB2 (PubMed:16824950). This cortical microtubule stabilizing activity is regulated at least in part by phosphatidylinositol 3-kinase signaling. Also performs a similar stabilizing function at the kinetochore which is essential for the bipolar alignment of chromosomes on the mitotic spindle (PubMed:16866869, PubMed:16914514). Acts as a mediator of ERBB2-dependent stabilization of microtubules at the cell cortex.[UniProtKB/Swiss-Prot Function]</p>