

## Product datasheet for **RG220098**

### ABCA5 (NM\_172232) Human Tagged ORF Clone

#### Product data:

Product Type:	Expression Plasmids
Product Name:	ABCA5 (NM_172232) Human Tagged ORF Clone
Tag:	TurboGFP
Symbol:	ABCA5
Synonyms:	ABC13; EST90625; HTC3
Mammalian Cell Selection:	Neomycin
Vector:	pCMV6-AC-GFP (PS100010)
E. coli Selection:	Ampicillin (100 ug/mL)
ORF Nucleotide Sequence:	>RG220098 representing NM_172232 Red=Cloning site Blue=ORF Green=Tags(s)

TTTTGTAATACGACTCACTATAGGGCGGCCGGAATTCGTCGACTGGATCCGGTACCGAGGAGATCTGCC  
GCC**CGATCGCC**

ATGTCCACTGCAATTAGGGAGGTAGGAGTTGGAGACAGACCAGAACACTTCTACTGAAGAATTACTTAA  
TTAAATGCAGAACCAAAAAGAGTAGTGTCAGGAAATCTTTTTCCACTATTTTTTTATTTTGGTTAAT  
ATTAATTAGCATGATGCATCCAATAAGAAATATGAAGAAGTGCCTAATATAGAACTCAATCCTATGGAC  
AAGTTTACTCTTTCTAATCTAATCTTTGGATATACTCCAGTGACTAATATTACAAGCAGCATCATGCAGA  
AAGTGTCTACTGATCATCTACCTGATGTCATAATTACTGAAGAATATACAAATGAAAAAGAAATGTTAAC  
ATCCAGTCTCTTAAGCCGAGCAACTTTGTAGGTGGTTTTCAAGACTCCATGTCTATGAACCTCGT  
TTTTTTCCTGATATGATTCCAGTATCTTCTATTTATATGGATTCAAGAGCTGGCTGTTCAAAATCATGTG  
AGGCTGCTCAGTACTGGTCTCAGGTTTACAGTTTTACAAGCATCCATAGATGCTGCCATTATACAGTT  
GAAGACCAATGTTTCTCTTTGGAAGGAGCTGGAGTCAACTAAAGCTGTTATTATGGGAGAAAAGTCTGTT  
GTAGAAATAGATACCTTTCCCGAGGAGTAATTTAATATACCTAGTTATAGCATTTTACCTTTTGGAT  
ACTTTTGGCAATTCATATCGTAGCAGAAAAAGAAAAAATAAAGAAATTTTAAAGATAATGGGACT  
TCATGATACTGCCTTTGGCTTTCTGGGTTCTTCTATATACAAGTTAATTTTTCTTATGTCCCTTCTT  
ATGGCAGTCATTGCGACAGCTTCTTTGTTATTTTCTCAAAGTGCAGCATTGTGATATTTTCTTTTTT  
TCCTTTATGGATTATCATCTGTATTTTTGCTTTAATGCTGACACCTCTTTTTAAAAAATCAAACATGT  
GGGAATAGTTGAATTTTTGTTACTGTGGCTTTTGGATTATTGGCCTTATGATAATCCTCATAGAAAGT  
TTTCCAAATCGTTAGTGTGGCTTTTCACTCTTTCTGTCAGTACTTTTGTGATTGGTATTGCACAGG  
TCATGCATTTAGAAGATTTAATGAAGGTGCTTCATTTCAAATTTGACTGCAGGCCCATATCCTCTAAT  
TATTACAATTATCATGCTCACACTTAATAGTATATTCTATGTCCTCTTGCTGTCTATCTTGATCAAGTC  
ATTCCAGGGGAATTTGGCTTACGGAGATCATCTTTATATTTTCTGAAGCCTTCATATTGGTCAAAGAGCA  
AAAGAAATATGAGGAGTTATCAGAGGGCAATGTTAATGGAAATATTAGTTTTAGTGAAATATTGAGCC  
AGTTTCTCAGAATTTGTAGGAAAAGAAGCCATAAGAATTAGTGGTATTCAGAAGACATACAGAAAGAAG



[View online »](#)

GGTAAAAATGTGGAGGCTTTGAGAAATTTGTCATTTGACATATATGAGGGTCAGATTACTGCCTTACTTG  
GCCACAGTGGAAACAGGAAAGAGTACATTGATGAATATTCTTTGTGGACTCTGCCACCTTCTGATGGGTT  
TGCATCTATATATGGACACAGAGTCTCAGAAAATAGATGAAATGTTTGAAGCAAGAAAAATGATTGGCATT  
TGTCCACAGTTAGATATACACTTTGATGTTTTGACAGTAGAAGAAAAATTTATCAATTTTGGCTTCAATCA  
AAGGGATACCAGCCAACAATAATAACAAGAAGTGCAGAAGGTTTTACTAGATTTAGACATGCAGACTAT  
CAAAGATAACCAAGCTAAAAAATTAAGTGGTGGTCAAAAAAGAAAGCTGCATTAGGAATTGCTGTTCTT  
GGAAACCCAAGATACTGCTGCTAGATGAACCAACAGCTGGAATGGACCCCTGTTCTCGCATATGTAT  
GGAATCTTTTTAAAATACAGAAAAGCCAATCGGGTGACAGTGTTTCACTACTCATTTCATGGATGAAGCTGA  
CATTCTTGCAGATAGGAAAGCTGTGATATCACAAGGAATGCTGAAATGTGTTGGTCTTCAATGTTCCCTC  
AAAAGTAAATGGGGGATCGGCTACCGCCTGAGCATGTACATAGACAAAATATTGTGCCACAGAATCTCTTT  
CTTCACTGGTTAAACAACATATACCTGGAGCTACTTTATTACAACAGAATGACCAACAACCTGTGTATAG  
CTTGCCTTCAAGGACATGGACAAAATTTTCAAGTGTGTTTTCTGCCCTAGACAGTCAATCAAATTTGGGT  
GTCATTTCTTATGGTGTTCATGACGACTTTGGAAGACGTATTTTTAAAGCTAGAAGTTGAAGCAGAAA  
TTGACCAAGCAGATTATAGTGTATTTACTCAGCAGCCACTGGAGGAAGAAATGGATTCAAATCTTTTGA  
TGAAATGGAACAGAGCTTACTTATCTTTCTGAAACCAAGGCTGCTCTAGTGAGCACCATGAGCCTTTGG  
AAACAACAGATGTATACAATAGCAAAGTTTCATTTCTTTACCTTGAAACGTGAAAGTAAATCAGTGAGAT  
CAGTGTGCTTCTGCTTTAATTTTTTTCACAGTTCAGATTTTTATGTTTTTGGTTCATCACTCTTTTAA  
AAATGCTGTGGTCCCATCAAACCTGTTCCAGACTTATTTTTCTAAAACCTGGAGACAAACCACATAAA  
TACAAAACAAGTCTGCTTCTTCAAATTTCTGCTGACTCAGATATCAGTGATCTTATTAGCTTTTTTCAAA  
GCCAGAACATAATGGTGACGATGATTAATGACAGTGACTATGTATCCGTGGCTCCCATAGTGCGGCTTT  
AAATGTGATGCATTCAGAAAAGGACTATGTTTTGACAGTGTTTTCAACAGTACTATGGTTTATCTTTA  
CCTATATTAGTGAATATCATTAGTAACACTACTATCTTTATCATTAAATGTGACTGAAACCATCCAGATC  
GGAGTACCCCATCTTTTCAAGAAAATTAAGTATAGTTTTTAAAATTTAGCTGTATTTTCAAGCAGCTTT  
GCTTGGAAATCATTGTTACTGCAATGCCACTTACTTTGCCATGGAAAATGCAGAGAATCATAAGATCAAA  
GCTTATACTCAACTTAACTTTTCAAGTCTTTTGCATCTGCATATTGGATTGGACAAGCTGTTGTTGATA  
TCCCTTATTTTTTATCATTCTTATTTTGTGCTAGGAAGCTTATTGGCATTTCATTATGGATTATATTT  
TTATACTGTAAAGTTCCTTGCTGTGGTTTTTGCCTTATTGGTTATGTTCCATCAGTTATTCTGTTCACT  
TATATTGCTTCTTTACCTTTAAGAAAATTTTAAATACCAAAGAATTTTGGTCATTTATCTATTCTGTGG  
CAGCGTTGGCTTGTATTGCAATCACTGAAATAACTTTCTTTATGGGATACACAATGCAACTATTCTTCA  
TTATGCCTTTTGTATCATCATTCCAATCTATCCACTTCTAGTGTGCTGATTTCTTTTATAAAGATTTCT  
TGAAGAATGTACGAAAAATGTGGACACCTATAATCCATGGGATAGGCTTTTCAAGTGTATATATCGC  
CTTACCTGCAGTGTACTGTGGATTTTCTTACAATACTATGAGAAAAAATATGGAGGCAGATCAAT  
AAGAAAAGATCCCTTTTTTCAGAAACCTTCAACGAAGTCTAAAAATAGGAAGCTTCCAGAACCACAGAC  
AATGAGGATGAAGATGAAGATGTCAAAGCTGAAAGACTAAAGGTCAAAGAGCTGATGGGTTGCCAGTGT  
GTGAGGAGAAACCATCCATTATGGTCAGCAATTTGCATAAAGAATATGATGACAAGAAAGATTTTCTTCT  
TTCAAGAAAAGTAAAGAAAGTGGCAACTAAATACATCTCTTTCTGTGTGAAAAAAGGAGAGATCTTAGGA  
CTATTGGTCCAAATGGTGTGGCAAAAGCACAATTTAATATTTCTGGTTGGTGATATTGAACCAACT  
CAGGCCAGGTATTTTTAGGAGATTATTCTTCAAGACAAGTGAAGATGATGATTCAGTGAAGTGTATGGG  
TACTGTCTCAGATAAACCTTTTGTGGCCAGATACTACATTGCAGGAACATTTTGAATTTTATGGAGCT  
GTCAAAGGAATGAGTGCAAGTGACATGAAAGAAGTCATAAGTCAATAACACATGCACTTGATTTAAAAG  
AACATCTTCAGAAGACTGTAAGAAACTACCTGCAGGAATCAAACGAAAGTTGTGTTTTGCTCTAAGTAT  
GCTAGGGAATCCTCAGATTACTTTGCTAGATGAACCATCTACAGGTATGGATCCCAAAGCCAAACAGCAC  
ATGTGGCGAGCAATTCGAACTGCATTTAAAACAGAAAGCGGGCTGCTATTCTGACCACTCACTATATGG  
AGGAGGCAGAGGCTGTCTGTGATCGAGTAGCTATCATGGTGTCTGGCAGTTAAGATGTATCGGAACAGT  
ACAACATCTAAAGAGTAAATTTGGAAAAGGCTACTTTTTGGAAATTAATTTGAAGGACTGGATAGAAAAC  
CTAGAAGTAGACCGCTTCAAAGAGAAATTCAGTATATTTTCCAAATGCAAGCCGTGAGAAAAGTTTTT  
CTTCTATTTTGGCTTATAAAATTCCTAAGGAAGATGTTTCACTCCCTTTCACAATCTTTTTTAAAGCTGGA  
AGAAGCTAAACATGCTTTTGCATTGAAGAATATAGCTTTTCTCAAGCAACATTGGAACAGGTTTTTGTGA  
GAACTCACTAAAGAACAAGAGGAGGAAGATAATAGTTGTGGAACCTTTAAACAGCACACTTTGGTGGGAAC  
GAACACAAGAAGATAGAGTAGTATTT

ACGCGTACGCGGCCGCTCGAG - GFP Tag - GTTTAA

Protein Sequence: >RG220098 representing NM\_172232  
 Red=Cloning site Green=Tags(s)

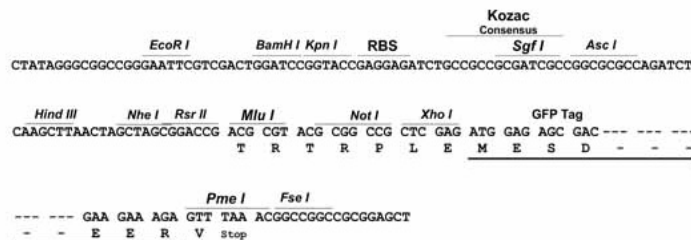
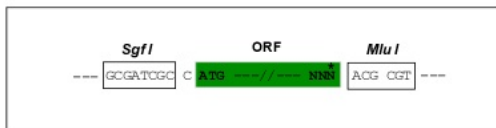
MSTAIREVGVWRQTRTLLLNKYLKCRTRKSSVQEILFPLFFLFWLILISMHPNKKYEEVPNIELNPMDF  
 KFTLSNLI LGYTPVTNITSSIMQKVSTDLHPDVIITEEYTNKEMLTSSL SKSPNFVGVVFKDSMSYELR  
 FFPDMIPVSSIYMDSRAGCSKCEAAQYSSGFTVLQASIDAAIQLKTNVSLWKELESTKAVIMGETAV  
 VEIDTFPRGVIL IYLVI AFSPFGYFLAIHIVAEKEKKIKEFLKIMGLHDTAFWLSWVLLYTSLIFLMSLL  
 MAVIATASLLFPQSSIVIFLLFFLYGLSSVFFALMLTPLFKKSKHVGIVEFFVTVAFGF IGLMIILIES  
 FPKSLVWLFSPFCHCTFVIGIAQVMHLEDFNEGASF SNL TAGPYLIITIIIMLTLNSIFVYLLAVYLDQV  
 IPGEFGLRRSSL YFLKPSYWSKSKRNYEELSEGNVNGNISFSEIIEPVSSEFVKG EAIRISGIQKTYRKK  
 GENVEALRNL SFDIYEGQITALLGHS GTGKSTLMNILCGLCPPSDGFASIYGHRVSEIDEMFEARKMIGI  
 CPQLDIHFVDL VTEENLSILASIKGIPANNIIQEVQKVLLDLDMQTIKDNQAKKLSGGQKRKLSLGI AVL  
 GNPKILLLLDEPTAGMDPCSRHIVWNLLKYRKANRVTVFSTHFMDEADILADRKAIVISQGMLKCVGSSMFL  
 KSKWIGYRLSMYIDKYCATESSLVKQHIPGATLLQQNDQQLVYSLPFKDMDF SGLFSALD SHSNL G  
 VISYGVSMTTLEDVFLKLEVEAEIDQADYSVFTQQPLEEEMDSKSFDEMEQSLLILSETKAALVSTMSLW  
 KQQMYTIAKFHFFTLKRESKSVRSVLLLLLIFFTVQIFMFLVHHSFKNAVVP IKLVPDLYFLKPGDKPHK  
 YKTSLLLQNSADSDISDLISFFTSQNIMVTMINDSDYVSVAPHS AALNVMHSEKDYVFAAVFNSTMVYSL  
 PILVNIISNYLYHLNVTETIQIWSTPFFQEITDIVFKIELYFQAALLGIIVTAMPPYFAMENAENHKIK  
 AYTQLKLSGLLP SAYWIGQAVVDIPLFFIILMLGSLAFHYGLYFYTVKFLAVVFCLIGYVPSVILFT  
 YIASFTFKKILNTKEFWSFIYSVAALACIAITEITFFMGYTIATILHYAF CIIPIYPLLGCLISFIKIS  
 WKNVVRKNVDYTPWDRLSVAVISPYLQCVLWIFLLQYEEKYGGRSIRKDPFFRNLSTKSKNRKLPEPPD  
 NEDEDEDVKAERLKVKELMGCQCCEEKPSIMVSNLHKEYDDKDFLLSRKVKKVATKYISFCVKKGEILG  
 LLGPNAGKSTIINILVGDIEPTSGQVFLGDYSSETSEDDDSLKCMGYCPQINPLWPD TTLQEHF EYGA  
 YKMSASDMKEVISRITHALDLKEHLQKTVKPLPAGIKRKLCFAL SMLGNPQITLLDEPSTGMDPKAKQH  
 MWRAIRTA FNKRRAAILTTHYMEEAEAVCDRVAIMVSGQLRCIGTVQHLSKFGKGYFLEIKLKDWIEN  
 LEVDRLQREIQYIFPNASRQESFSSILAYKIPKEDVQSLSQSFFKLEEAKHAF AIEEYSFSQATLEQVVF  
 ELTKEQEEEDNSCGTLNSTLWWERTQEDRVVF

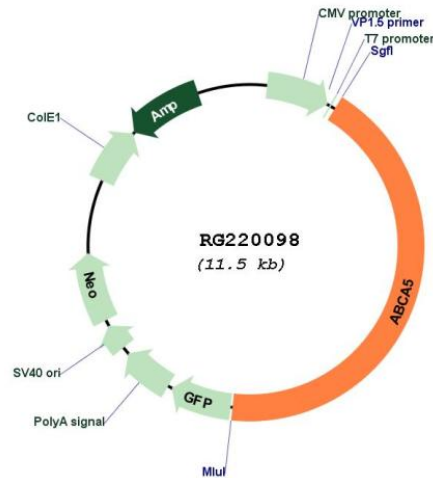
TRTRPLE - GFP Tag - V

Restriction Sites: SgfI-MluI

Cloning Scheme:

Cloning sites used for ORF Shutting:



**Plasmid Map:**


**ACCN:** NM\_172232

**ORF Size:** 4926 bp

**OTI Disclaimer:** The molecular sequence of this clone aligns with the gene accession number as a point of reference only. However, individual transcript sequences of the same gene can differ through naturally occurring variations (e.g. polymorphisms), each with its own valid existence. This clone is substantially in agreement with the reference, but a complete review of all prevailing variants is recommended prior to use. [More info](#)

**OTI Annotation:** This clone was engineered to express the complete ORF with an expression tag. Expression varies depending on the nature of the gene.

**Components:** The ORF clone is ion-exchange column purified and shipped in a 2D barcoded Matrix tube containing 10ug of transfection-ready, dried plasmid DNA (reconstitute with 100 ul of water).

**Reconstitution Method:**

1. Centrifuge at 5,000xg for 5min.
2. Carefully open the tube and add 100ul of sterile water to dissolve the DNA.
3. Close the tube and incubate for 10 minutes at room temperature.
4. Briefly vortex the tube and then do a quick spin (less than 5000xg) to concentrate the liquid at the bottom.
5. Store the suspended plasmid at -20°C. The DNA is stable for at least one year from date of shipping when stored at -20°C.

**RefSeq:** [NM\\_172232.4](#)

**RefSeq Size:** 8177 bp

**RefSeq ORF:** 4929 bp

<b>Locus ID:</b>	23461
<b>UniProt ID:</b>	<a href="#">Q8WWZ7</a>
<b>Cytogenetics:</b>	17q24.3
<b>Protein Families:</b>	Druggable Genome, Transmembrane
<b>Protein Pathways:</b>	ABC transporters
<b>Gene Summary:</b>	<p>The membrane-associated protein encoded by this gene is a member of the superfamily of ATP-binding cassette (ABC) transporters. ABC proteins transport various molecules across extra- and intracellular membranes. ABC genes are divided into seven distinct subfamilies (ABC1, MDR/TAP, MRP, ALD, OABP, GCN20, and White). This encoded protein is a member of the ABC1 subfamily. Members of the ABC1 subfamily comprise the only major ABC subfamily found exclusively in multicellular eukaryotes. This gene is clustered among 4 other ABC1 family members on 17q24, but neither the substrate nor the function of this gene is known. Alternative splicing of this gene results in several transcript variants; however, not all variants have been fully described. [provided by RefSeq, Jul 2008]</p>