

Product datasheet for **RG220080**

AP2 alpha (TFAP2A) (NM_001042425) Human Tagged ORF Clone

Product data:

Product Type:	Expression Plasmids
Product Name:	AP2 alpha (TFAP2A) (NM_001042425) Human Tagged ORF Clone
Tag:	TurboGFP
Symbol:	AP2 alpha
Synonyms:	AP-2; AP-2alpha; AP2TF; BOFS; TFAP2
Mammalian Cell Selection:	Neomycin
Vector:	pCMV6-AC-GFP (PS100010)
E. coli Selection:	Ampicillin (100 ug/mL)
ORF Nucleotide Sequence:	>RG220080 representing NM_001042425 Red=Cloning site Blue=ORF Green=Tags(s)

TTTTGTAATACGACTCACTATAGGGCGGCCGGAATTCGTCGACTGGATCCGGTACCGAGGAGATCTGCC
GCC**CGATCGCC**

ATGTCCACTTGGCCAAATGGGGGACTGGCAGGACCGTCACGACGGCACCAGCAACGGGACGGCACGGT
TGCCCCAGCTGGGCACTGTAGGTCAATCTCCCTACACGAGCGCCCCGCCGCTGTCCACACCCCCAATGC
CGACTTCCAGCCCCATACTTCCCCCACCTACCAGCCTATCTACCCCCAGTCGCAAGATCCTTACTCC
CACGTCAACGACCCTACAGCCTGAACCCCTGCACGCCAGCCGAGCCGAGCACCCAGGCTGGCCCC
GCCAGAGGCAGAGCCAGGAGTCTGGGCTCTGCACACGCACCGGGGCTGCCTCACCAGTGTGGGCCCT
GGATCCTCGCAGGACTACAGGCCGACAGGACCTCCTGCACGGCCACACGCGCTCAGCTCAGGACTC
GGAGACCTCTCGATCCACTCCTTACCTCAGCCATCGAGGAGTCCCGCATGTAGAAGACCCGGGTATTA
ACATCCCAGATCAAAGTGAATTAAGAAAGGCCCGTGTCCCTGTCCAAGTCCAACAGCAATGCCGTCTC
CGCCATCCCTATTAACAAGGACAACCTCTTCGGCGGCGTGGTGAACCCCAACGAAGTCTTCTGTTCAAGT
CCGGTTCGCTCTCGCTCCTCAGCTCCACCTCGAAGTACAAGGTACGGTGGCGGAAGTGCACGGCGGC
TCTCACACCCGAGTGTCTAACCGCTCGCTGTGGCGGAGTGTCCGGAGGGCAAGTCTAAAAATGG
AGGAAGATCTTTAAGAGAAAACTGGACAAAATAGGATTAATCTGCCTGCAGGGAGACGTAAGCTGCC
AACGTTACCCTGCTCACATCACTAGTAGAGGGAGAAGTGTCCACCTAGCCAGGGACTTTGGGTACGTGT
GCGAAACCGAATTTCTGCCAAAGCAGTAGCTGAATTTCTCAACCGACAACATTCCGATCCCAATGAGCA
AGTGACAAGAAAAACATGCTCCTGGCTACAAAACAGATATGCAAAGAGTTCACCGACCTGCTGGCTCAG
GACCGATCTCCCCTGGGAACTCACGGCCAAACCCATCCTGGAGCCCGCATCCAGAGCTGCTTGACCC
ACTTCAACCTCATCTCCCACGGCTTCGGCAGCCCCGCGGTGTGTGCCGCGGTACGGCCCTGCAGAACTA
TCTCACCGAGGCCCTCAAGGCCATGGACAAAATGTACCTCAGCAACAACCCCAACAGCCACACGGACAAC
AACGCCAAAAGCAGTGACAAAGAGGAGAAGCACAGAAAAG

AGCGGACCGACGCGTACGCGGCCGCTCGAG - GFP Tag - GTTTAA



[View online »](#)

Protein Sequence: >RG220080 representing NM_001042425
 Red=Cloning site Green=Tags(s)

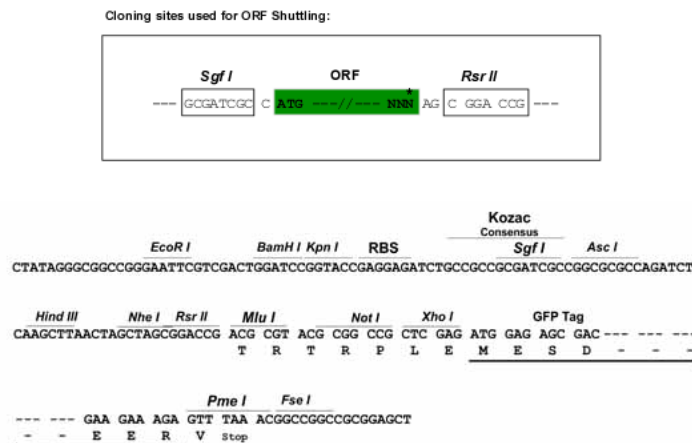
```
MSILAKMGDWQDRHDGTSNGTARLPQLGTVGQSPYTSAPPLSHTPNADFQPPYFPPPYQPIYPQSQDPYS
HVNDPYSLNPLHAQPQPQHPGWPGQRQSQESGLLHTRGLPHQLSGLDPRRDYRRHEDLLHGPHALSSGL
GDL SIHSLPHAIIEVPHVEDPGINIPDQTVIKKGPVSLSKSNSNAVSAIPINKDNLFGGVVNPNEVFCV
PGRLSLLSSTSKYKVTVAEVQRRLSPPECLNASLLGGVLRRAKSKNGGRSLREKLDKIGLNLPAGRRKAA
NVTLLTSLVEGEAVHLARDFGYVCETEFPAKAVAEFLNRQHSDPNEQVTRKNMMLLTKQICKEFTDLAQ
DRSPLGNSRPNPILPEGIQSCLTHFNLI SHGFSPAVCAAVTALQNYL TEALKAMDKMYLSNNPNSHTDN
NAKSSDKEEKHRK
```

SGP TRRRLE - GFP Tag - V

Chromatograms: https://cdn.origene.com/chromatograms/ja3263_f06.zip

Restriction Sites: SgfI-RsrII

Cloning Scheme:



ACCN: NM_001042425

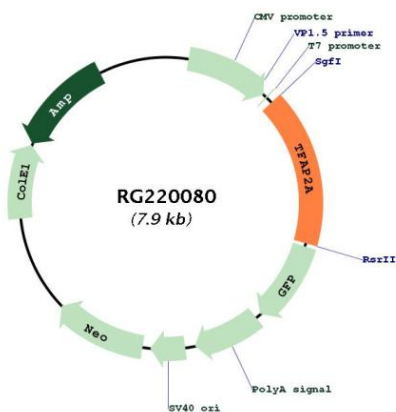
ORF Size: 1299 bp

OTI Disclaimer: Due to the inherent nature of this plasmid, standard methods to replicate additional amounts of DNA in E. coli are highly likely to result in mutations and/or rearrangements. Therefore, OriGene does not guarantee the capability to replicate this plasmid DNA. Additional amounts of DNA can be purchased from OriGene with batch-specific, full-sequence verification at a reduced cost. Please contact our customer care team at custsupport@origene.com or by calling 301.340.3188 option 3 for pricing and delivery.

The molecular sequence of this clone aligns with the gene accession number as a point of reference only. However, individual transcript sequences of the same gene can differ through naturally occurring variations (e.g. polymorphisms), each with its own valid existence. This clone is substantially in agreement with the reference, but a complete review of all prevailing variants is recommended prior to use. [More info](#)

OTI Annotation:	This clone was engineered to express the complete ORF with an expression tag. Expression varies depending on the nature of the gene.
Components:	The ORF clone is ion-exchange column purified and shipped in a 2D barcoded Matrix tube containing 10ug of transfection-ready, dried plasmid DNA (reconstitute with 100 ul of water).
Reconstitution Method:	<ol style="list-style-type: none">1. Centrifuge at 5,000xg for 5min.2. Carefully open the tube and add 100ul of sterile water to dissolve the DNA.3. Close the tube and incubate for 10 minutes at room temperature.4. Briefly vortex the tube and then do a quick spin (less than 5000xg) to concentrate the liquid at the bottom.5. Store the suspended plasmid at -20°C. The DNA is stable for at least one year from date of shipping when stored at -20°C.
RefSeq:	NM_001042425.2
RefSeq Size:	3150 bp
RefSeq ORF:	1302 bp
Locus ID:	7020
UniProt ID:	P05549
Cytogenetics:	6p24.3
Protein Families:	Druggable Genome, Transcription Factors
Gene Summary:	The protein encoded by this gene is a transcription factor that binds the consensus sequence 5'-GCCNNNGGC-3'. The encoded protein functions as either a homodimer or as a heterodimer with similar family members. This protein activates the transcription of some genes while inhibiting the transcription of others. Defects in this gene are a cause of branchiooculofacial syndrome (BOFS). Three transcript variants encoding different isoforms have been found for this gene.[provided by RefSeq, Dec 2009]

Product images:



Circular map for RG220080