

## Product datasheet for **RG220077**

### ZNF614 (NM\_025040) Human Tagged ORF Clone

#### Product data:

Product Type:	Expression Plasmids
Product Name:	ZNF614 (NM_025040) Human Tagged ORF Clone
Tag:	TurboGFP
Symbol:	ZNF614
Mammalian Cell Selection:	Neomycin
Vector:	pCMV6-AC-GFP (PS100010)
E. coli Selection:	Ampicillin (100 ug/mL)



[View online »](#)

**ORF Nucleotide Sequence:**

>RG220077 representing NM\_025040  
 Red=Cloning site Blue=ORF Green=Tags(s)

TTTTGTAATACGACTCACTATAGGGCGGCCGGAATTCGTCGACTGGATCCGGTACCGAGGAGATCTGCC  
 GCC**CGCATCGCC**

ATGATCAAGACCCAGGAATCACTGACCCTGGAGGATGTGGCTGTGGAATTCAGCTGGGAGGAGTGGCAGC  
 TCCTGGACACTGCTCAGAAGAACCCTGTACCGGGATGTGATGGTGGAGAACTATAACCACCTAGTATCACT  
 GGGGTATCAAAGTACAAACCAGATGTACTCTCCAAGTTGGCACATGGACAAGAACCATGGACAACAGAT  
 GCTAAAATTCAGAATAAAAAATTGTCAGGAATCGGGAAAGTTGACAGTCACTGCAAGAGCACTCTCCAA  
 ACCAAAGACTTCTGAAGAGCGTGCAGCAATGCAATGGACAGAATACACTTAGAAATATTGTACATCTCAG  
 CAAGACACATTTTCTATAGTGCAAAATCATGATACATTTGACTTGTACAGAAAAATTTGAAATCAAGT  
 TTAAGTTAATCAACCAGAAGAGAAGACATGGAATAAATAACCCTGTTGAGTTTATTGGAGGTGAGAAAA  
 CACTTCTACATGGTAAGCATGAACGTACGCATACTAAAAGTATTTTCTGAAAAATGCAAAATGTATCCA  
 TACTAAATCCAAGTCTCAAGCATCAGAGGACTCAGAAAATGAGAAACCCCATGCATGCATTGAATGT  
 GAGCAAACCTTCCTTAGGAAGTCTCAGCTCATTTACCATGAGAACATTTGTATACAAGAGAATCCTGGAA  
 GTGGTCAATGTGAGAAATATCCAGAAGTGCCTGTTCACTAAGCATCTGAAAACTAATAACAACAGACAA  
 AATCTGTATACCAATGAATATAGAAAAGGCTCTACTGTGAAGAGTAGTCTATTACACATCAACAAACC  
 CATAACAGAGAGAAATCCTATATGTGCAGTGAAGTGTGGAAAGGGCTTTACAATGAAGCGCTATCTAATTG  
 CTCATCAGCGAAGTATAGTGGAGAGAAACCTTATGTGTGCAAGAATGTGGAAAAGGTTTCACTGTGAA  
 GAGCAATCTATTGTACATCAGCGAAGTATACAGGGGAGAAACCTATATATGCAGTGAATGTGGAAAA  
 GGCTTACCAGTGAAGCGCTATCTTGTGTACATCAGCGAAGTCACTGGAGAGAAAACCTATATGTGCA  
 GTGAATGTGGAAAAGGCTTACCCTGAAGAGCAATCTCATTGTACATCAGCGCTCCACACAGGAGAAAA  
 ATCTTACATATGCAGCGAATGTGGAAAAGGCTTCACTGTCAAACGCACTCTCGTTATACATCAGCGAAGT  
 CATAACAGGAGAGAAATCTTACATATGCAATGAATGTGGTAAAGGCTTACCACAAAAGCGCACTCTTATTA  
 TACATCAGCGAAGTATACAGGAGAAAAACCTATGAATGCAATGAATGTGGTAAAGCCTTCAGCCAGAA  
 AATATGCCTCATAACAATGAGAGATGCATACAGGAAAGACTCCCTTTGTATGTACCGAGTGGGAAAA  
 TCCTATTACACAAAATATGGCCTCATTACCCATCAGAGAATTACACAGGAGAGAAAACCTTATGAGTGA  
 ATGAATGTGGAAAAGCCTTACCACAAAAGTCAGTACTCAATGTACATCAAAGAACGCATACAGGAGAGAG  
 GCCGTATGGATGCAGTATTGTGAGAAAAGCCTTCTCCACTTATCAAACCTTGTCAAACATAAGAAAATG  
 CACACAAGAGAAATGGGTAGAATCAGTCAAGTTGAAAACCTCTGTAAATGGAGAGTACAGCTCCTCCTT  
 ATAAG

**ACGCGTACGCGGCCGCTCGAG** - GFP Tag - GTTTAA

**Protein Sequence:**

>RG220077 representing NM\_025040  
 Red=Cloning site Green=Tags(s)

MIKTQESLTLEDVAVEFSWEEWQLLDTAQKNLYRDMVENYNHLVSLGYQTSKPDVLSKLAHQEPWTTD  
 AKIQNKNCPIGKVDShLQEHSPNQRLLKSVQQCNGQNTLRNIVHLSKTHFPIVQNHDTFDLYRKNLKSS  
 LSLINQKRRHGGINNPVEFIGGEKTLHGKHERHTKTRFSENAKCIHTKFQVFKHRTQKIEKPHACIEC  
 EQTFLRKSQLIYHENICIQENPGSGQCEKLSRSVLFKHLKTNNTDKICIPNEYRKGSTVKSLLITHQQT  
 HTEEKSYMCECGKGFMTKRYLIAHQRTSHGKPYVCKEKGKFTVKSNIIVHQRTHTGEKPYICSECGK  
 GFTMKRYLVVHQRTHTGEKPYMCECGKFTVKSNIIVHQRSHTGEKSYICSECGKGFVTKRTLVIHQRT  
 HTGEKSYICNECGKGFVTKRLLIHHQRTHTGEKPYECNECGKAFSQKICLIQHERCHTGTTPFVCTECGK  
 SYSHKYGLITHQRIHTGEKPYECNECGKAFVTKSVLNVHQRTHTGERPYGCSDEKAFSHLSNLVKHKKM  
 HTREMGRISQVENSNGESQLLPYK

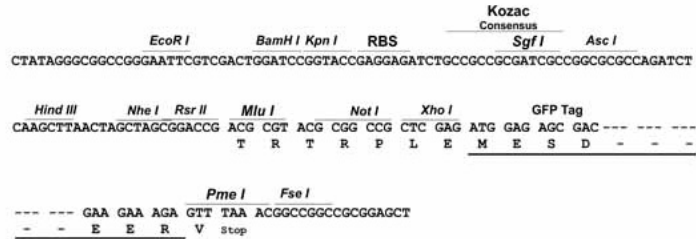
**TRTRPLE** - GFP Tag - V

**Restriction Sites:**

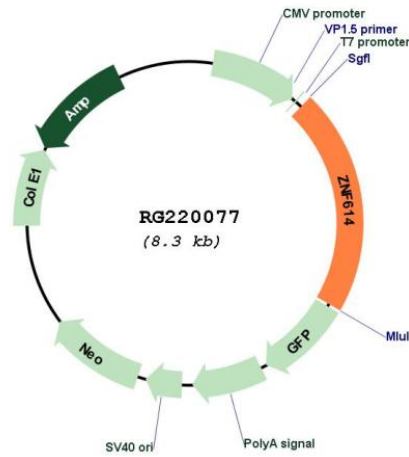
Sgfl-MluI

Cloning Scheme:

Cloning sites used for ORF Shutting:



Plasmid Map:



ACCN:

NM\_025040

<b>ORF Size:</b>	1755 bp
<b>OTI Disclaimer:</b>	The molecular sequence of this clone aligns with the gene accession number as a point of reference only. However, individual transcript sequences of the same gene can differ through naturally occurring variations (e.g. polymorphisms), each with its own valid existence. This clone is substantially in agreement with the reference, but a complete review of all prevailing variants is recommended prior to use. <a href="#">More info</a>
<b>OTI Annotation:</b>	This clone was engineered to express the complete ORF with an expression tag. Expression varies depending on the nature of the gene.
<b>Components:</b>	The ORF clone is ion-exchange column purified and shipped in a 2D barcoded Matrix tube containing 10ug of transfection-ready, dried plasmid DNA (reconstitute with 100 ul of water).
<b>Reconstitution Method:</b>	<ol style="list-style-type: none"><li>1. Centrifuge at 5,000xg for 5min.</li><li>2. Carefully open the tube and add 100ul of sterile water to dissolve the DNA.</li><li>3. Close the tube and incubate for 10 minutes at room temperature.</li><li>4. Briefly vortex the tube and then do a quick spin (less than 5000xg) to concentrate the liquid at the bottom.</li><li>5. Store the suspended plasmid at -20°C. The DNA is stable for at least one year from date of shipping when stored at -20°C.</li></ol>
<b>RefSeq:</b>	<a href="#">NM_025040.4</a>
<b>RefSeq Size:</b>	4627 bp
<b>RefSeq ORF:</b>	1758 bp
<b>Locus ID:</b>	80110
<b>UniProt ID:</b>	<a href="#">Q8N883</a>
<b>Cytogenetics:</b>	19q13.41
<b>Protein Families:</b>	Transcription Factors
<b>Gene Summary:</b>	May be involved in transcriptional regulation.[UniProtKB/Swiss-Prot Function]