

## Product datasheet for **RG220048**

### Amphiphysin (AMPH) (NM\_139316) Human Tagged ORF Clone

#### Product data:

Product Type:	Expression Plasmids
Product Name:	Amphiphysin (AMPH) (NM_139316) Human Tagged ORF Clone
Tag:	TurboGFP
Symbol:	Amphiphysin
Synonyms:	AMPH1
Mammalian Cell Selection:	Neomycin
Vector:	pCMV6-AC-GFP (PS100010)
E. coli Selection:	Ampicillin (100 ug/mL)



[View online »](#)

**ORF Nucleotide Sequence:**

>RG220048 representing NM\_139316  
 Red=Cloning site Blue=ORF Green=Tags(s)

TTTTGTAATACGACTCACTATAGGGCGGCCGGGAATTCGTCGACTGGATCCGGTACCGAGGAGATCTGCC  
 GCC**CGCATCGCC**

ATGGCCGACATCAAGACGGGCATCTTCGCCAAGAAGCTCCAGAAGCGACTCAACCGCGCGCAGGAAAAGG  
 TCCTCCAAAAGCTGGGGAAGCTGATGAGACAAAAGACGAACAGTTTCAAGAATATGTCCAGAATTCAA  
 ACGGCAAGAAGCAGAGGGTACCAGACTTACGCGAGAAGCTCCGAGGATATTTAGCAGCAATCAAAGGCATG  
 CAGGAGGCCTCCATGAAGCTCACAGAGTCGCTGCATGAAGTCTATGAGCCTGACTGGTATGGGCGGGAAG  
 ATGTGAAAATGGTTGGTGAAGAAATGTGATGTGCTGTGGGAAGACTTCCATCAAAAACCTCGTGGATGGGTC  
 CTTGCTAACACTGGATACCTACCTGGGGCAATTTCTGACATAAAGAATCGCATCGCCAAGCGCAGCAGG  
 AAGCTAGTGGACTATGACAGTCCCGCCACCCTGGAAGCTCTGCAGAGCTCCAAGAGGAAGGATGAGA  
 GTCGAATCTTAAGGCAGAAGAAGAATTCAGAAAAGCACAGAAAGTGTGTTGAAGAGTTTAACTGACTT  
 ACAAGAAGAGTTACCATCATTATGGTCAAGACGAGTTGGATTTTATGTTAATACTTTCAAAAACGCTCC  
 AGCCTTGAAGCCAAGTTTCATAAGGAAATTCGCGTGTCTTGGCCACAACTGTATGAAGTGTGACAAAAC  
 TGGGTGACCAGCACGCCGACAAGGCCTTACCATCCAAGGAGCGCCAGTGATTCGGGTCCTCTCCGCAT  
 TGCAAAGACCATCACCCGCTGAGGAGCCTTACCCCTCCCGAGCCCGACAGCAAGTCCAAATCATACA  
 TTAGCACCTGCGTCTCCCGCACCAGCACGGCCTCGGTCACCTTACAGACAAGGAAAGGGCCTCCTGTCC  
 CACCTCTACCTAAAGTCAACCCGACAAGGAAGTGCAGCAGGAGAATCATCAGTTTCTTTGAGGACAA  
 CTTTGTTCAGAAATCAGTGTGACAACACCTTCCAGAAATGAAGTCCCTGAGGTGAAGAAAGAGGAGACT  
 TTGCTGGATCTGGACTTTGATCCTTTCAAGCCGAGGTGACACCTGCAGGTTCTGCTGGAGTGACCCACT  
 CACCCATGTCTCAGACATTGCCCTGGGACCTATGGACGACAAGCACTGATTTGGTACAGCCGGCTTCTGG  
 TGTTTCATTTAATGGATTACACAGCCCAAGGATCTTCAATTATTCACAATGCAGACAGACAGAGTATG  
 ATCTGCAACTTGATCATACCTGGAGCTGATGCTGATGCAGCTGTTGGAACCTTGGTGTGACGAGCTGAGG  
 GGGCCCCAGGAGAGGAAGCAGAGGCGGAGAAGGCCACTGTCCCTGCCGGGGAAGGAGTAAGTTTAGAGGA  
 GGCCAAAATTGGAAGTGAACCCTGAGGGTGCAGAGAGTGCCCAACCTGAAGCAGAGGAGCTCGAAGCA  
 ACAGTGCCTCAGGAGAAGGTCATTCCTTCGGTGGTGCATAGAGCCTGCCTCAACCATGAAGAGGAAGGAG  
 AAAACGAAATAACTATAGGTGCAGAGCCCAAGGAGACCACCGAGGACGCGGCTCCTCCGGGCCCCACCAG  
 CGAGACACCGGAGCTGGTACGGAGCAGAAGCCTATCCAGGACCCTCAGCCACGCCTTCTGCACCAGCC  
 ATGGGGGCTGCTGACCAGCTAGCATCTGCAAGGGAGGCCTCTCAGGAATTGCCTCCTGGCTTCTCTACA  
 AGGTGGAACACTGCATGATTTTGGAGCAGCAAATTCATGAACTTACCTTACAAGGGGTGATGTGGT  
 GCTGGTGGTCCCTCAGATTCAGAAGCTGATCAGGATGCAGGCTGGCTGGTGGGAGTGAAGGAATCAGAC  
 TGGCTTCACTACAGAGACCTTGCCACCTACAAAGGCCTCTTCCAGAGAAGTTCACCCGACGCTTAGAT

**ACGCGT**ACGCGGCCGCTCGAG – GFP Tag – GTTTAA

**Protein Sequence:**

>RG220048 representing NM\_139316  
 Red=Cloning site Green=Tags(s)

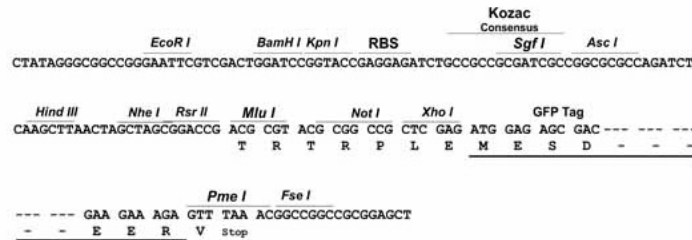
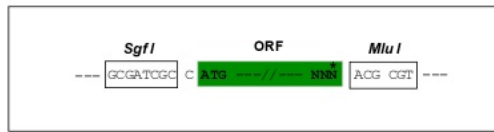
MADIKTGIFAKNVQKRLNRAQEKVLQKLGKADETKDEQFEEYVQNFKRQEAEGTRLQRELRYLAAIKGM  
 QEASMKL TESLHEVYEPDWYGREVDKVMGEKCDVLWEDFHQKLV DGSLL TLDTYLQGFPDIKNRIAKRSR  
 KLVDYDSARHHL EALQSSKRKDESRI SKAE EEFQKAQKVFE EFNVDLQEELPSLWSRRVGFVYNTFNKVS  
 SLEAKFHKEI AVLCHKL YEVMTKLGDQHADKAF TIQGAPSDSGPLRIAKTPSPPEEPSPLP SPTASPNHT  
 LAPASPAPARPRSPSQTRKGPPVPLPKVTPTKELQQENI ISFFEDNFVPEISVTTPSQNEVPEVKKKEET  
 LLDLDFDFPFKPEVTPAGSAGVTHSPMSQTLPWDLWTTSTDLVQPASGGSFNGFTQPQDTSLFTMQTDQSM  
 ICNLIIPGADADA AVGTLVSAAE GAGPEEAEAEKATVPAGEGVSLEEAKIGTETTEGAESAQPEAELEA  
 TVPQEKVIPSVVIEPASNHEEEGENEITIGAEPKETTEDAAPPGPTSETPELATEQKPIQDPQPTPSAPA  
 MGAADQLASAREASQELPPGF LYKVELLHDFEAANSDEL TLQRGDVVLVVPSDSEADQDAGWLVGVKESD  
 WLQYRDLATYKGLFPENFTRRLD

**TRTRPLE** – GFP Tag – V

Restriction Sites: SgfI-MluI

Cloning Scheme:

Cloning sites used for ORF Shutting:



ACCN: NM\_139316

ORF Size: 1959 bp

OTI Disclaimer: The molecular sequence of this clone aligns with the gene accession number as a point of reference only. However, individual transcript sequences of the same gene can differ through naturally occurring variations (e.g. polymorphisms), each with its own valid existence. This clone is substantially in agreement with the reference, but a complete review of all prevailing variants is recommended prior to use. [More info](#)

OTI Annotation: This clone was engineered to express the complete ORF with an expression tag. Expression varies depending on the nature of the gene.

Components: The ORF clone is ion-exchange column purified and shipped in a 2D barcoded Matrix tube containing 10ug of transfection-ready, dried plasmid DNA (reconstitute with 100 ul of water).

Reconstitution Method:

1. Centrifuge at 5,000xg for 5min.
2. Carefully open the tube and add 100ul of sterile water to dissolve the DNA.
3. Close the tube and incubate for 10 minutes at room temperature.
4. Briefly vortex the tube and then do a quick spin (less than 5000xg) to concentrate the liquid at the bottom.
5. Store the suspended plasmid at -20°C. The DNA is stable for at least one year from date of shipping when stored at -20°C.

RefSeq: [NM\\_139316.2](#), [NP\\_647477.1](#)

RefSeq Size: 3161 bp

RefSeq ORF: 1962 bp

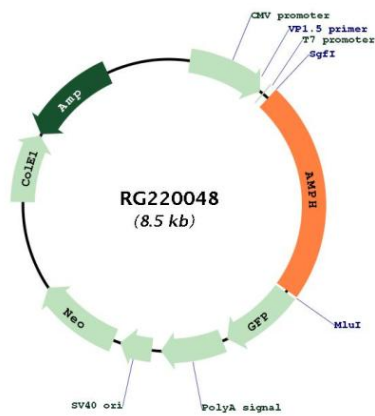
Locus ID: 273

UniProt ID: [P49418](#)

**Cytogenetics:** 7p14.1  
**Domains:** SH3, BAR  
**Protein Families:** Secreted Protein  
**Protein Pathways:** Fc gamma R-mediated phagocytosis  
**Gene Summary:**

This gene encodes a protein associated with the cytoplasmic surface of synaptic vesicles. A subset of patients with stiff-man syndrome who were also affected by breast cancer are positive for autoantibodies against this protein. Alternate splicing of this gene results in two transcript variants encoding different isoforms. Additional splice variants have been described, but their full length sequences have not been determined. A pseudogene of this gene is found on chromosome 11.[provided by RefSeq, Nov 2010]

**Product images:**



Circular map for RG220048