

Product datasheet for **RG220015**

DENN (MADD) (NM_130470) Human Tagged ORF Clone

Product data:

Product Type:	Expression Plasmids
Product Name:	DENN (MADD) (NM_130470) Human Tagged ORF Clone
Tag:	TurboGFP
Symbol:	DENN
Synonyms:	DEEAH; DENN; IG20; NEDDISH; RAB3GEP; RabGEF
Mammalian Cell Selection:	Neomycin
Vector:	pCMV6-AC-GFP (PS100010)
E. coli Selection:	Ampicillin (100 ug/mL)
ORF Nucleotide Sequence:	>RG220015 representing NM_130470 Red=Cloning site Blue=ORF Green=Tags(s)

TTTTGTAATACGACTCACTATAGGGCGCCGGGAATTCGTCGACTGGATCCGGTACCGAGGAGATCTGCC
GCC**CGATCGCC**

ATGGTGCAAAAGAAGAAGTTCTGTCTCGGTTACTTGACTATCTAGTGATCGTAGGGCCAGGCACCCGA
GCAGTGATAGCGTGGCCAGACTCTGAATTGCTACGGCGATACCCCTTGGAGGATCACACTGAGTTTCC
CCTGCCCCAGATGTAGTGTCTTCTGCCAGCCGAGGGTGCCTGAGCGTGGCAGCGGCGCATGAGC
CTTCGGGATGATACCTCTTTGTCTTACCCTCACTGACAAGGACTGGAGTACGCGATATGGCATCT
GTGTTAACTTCTACCGCTCCTTCCAAAAGCGAATCTCTAAGGAGAAGGGGAAGGTGGGGCAGGGTCCCC
TGGGAAGGAAGGAACCCATGCCACCTGTGCCTCAGAAGAGGGTGGCACTGAGAGCTCAGAGAGTGGCTCA
TCCTGCAGCCTCTCAGTGCTGACTCTACCCCTGATGTGAACCAGTCTCCTCGGGCAAACGCCGGGCCA
AGGCGGGGAGCCGCTCCCGCAACAGTACTCTCACGTCCCTGTGCGTGCTCAGCCACTACCCCTTCTTCTC
CACCTTCCGAGAGTGTTGTATACTCTCAAGCGCTGGTGGACTGCTGTAGTGAGCGCCTTCTGGGCAAG
AACTGGGCATCCCTCGAGGCGTACAAAGGACACCATGTGGCGGATCTTACTGGATCGCTGCTGGTAG
AGGAGAAGTCAAGTGCCCTTCTGCATGACCTTCGAGAGATTGAGGCTGGATCTATCGATTGCTGCGCTC
CCCAGTACCCGTCTCTGGGCAGAAGCGAGTAGACATCGAGTCCCTACCCCAAGAGCTCCAGCCAGCTCTG
ACCTTTGCTCTTCCAGACCCATCTCGATTACCCCTAGTGGATTTCCCACTGCACCTTCCCTGGAACCTC
TAGGTGTGGACGCTGTCTCCAGGTGCTAACCTGCATTCTGTTAGAGCACAAGGTGGTGCTACAGTCCCG
AGACTACAATGCACTCTCCATGTCTGTGATGGCATTCTGGCAATGATCTACCCACTGGAATATATGTTT
CCTGTCATCCCGCTGCTACCCACCTGCATGGCATCAGCAGAGCAGCTGCTGTTGGCTCCAACCCCGTACA
TCATTGGGGTTCCTGCCAGCTTCTTCTCTACAACTGGACTTCAAAATGCCTGATGATGTATGGCTAGT
GGATCTGGACAGCAATAGGGTGATTGCCCCACCAATGCAGAAGTGTGCCTATCCTGCCAGAACCAGAA
TCACTAGAGCTGAAAAAGCATTTAAAGCAGGCCTTGGCCAGCATGAGTCTCAACACCCAGCCCATCTCA
ATCTGGAGAAATTCATGAGGGCCAGGAGATCCCCCTTCTTGGGAAGGCTTCTAATGACCTGCAGTC
CACACCGTCCACTGAATCAACCCACTCATCTATGGCAATGATGTGGATTCTGTGGATGTTGCAACCAGG



[View online »](#)

GTTGCCATGGTACGGTTCTTCAATTCCGCCAACGTGCTGCAGGGATTTTCAGATGCACACGCGTACCCTGC
 GCCTCTTTCCTCGGCCTGTGGTAGCTTTTCAAGCTGGCTCCTTTCTAGCCTCACGTCCCCGGCAGACTCC
 TTTTGCCGAGAAATTGGCCAGGACTCAGGCTGTGGAGTACTTTGGGGAATGGATCCTTAACCCACCAAC
 TATGCCTTTCAGCGAATTCACAACAATATGTTTGTATCCAGCCCTGATTGGTGACAAGCCAAAGTGGTATG
 CTCATCAGCTGCAGCCTATCCACTATCGCGTCTATGACAGCAATCCCAGCTGGCTGAGGCCCTGAGTGT
 ACCACCAGAGCGGACTCTGACTCCGAACCTACTGATGATAGTGGCAGTGATAGTATGGATTATGACGAT
 TCAAGCTCTTCTACTCCTCCCTTGGTGACTTTGTGTCAGTGAATGATGAAATGTGACATTAATGGTGATA
 CTCCCAATGTGGACCCTCTGACACATGACAGCACTGGGGGATGCCAGCGAGGTGGAGATTGACGAGCTGCA
 GAATCAGAAGGAAGCAGAAGAGCCTGGCCAGACAGTGAGAACTCTCAGGAAAACCCCCACTGCGCTCC
 AGCTCTAGCACCACAGCCAGCAGCAGCCCCAGCACTGTATCCACGGAGCCAACTCTGAACCTGCTGACT
 CTACGGAGATGGATGATAAGGCAGCAGTAGGCGTCTCCAAGCCCCCTCCCTCCGTGCCTCCAGCATTGG
 CAAATCGAACATGGACAGACGTGAGGCAGAAATGGAGAGGGGTGAGTGCGCCGGCGAATCTATGACAA
 CCATACTCGAGCCCAATATGGCTTTCCCTGAGGAAGATGAGGATGAGCAGGGGAAAGTTACTCTC
 CCCGATTCAGCCAAATGTCAGTGGCAATCGGGCTCAAAGCTGCTGCGGCCAACAGCTTGAGACTGGC
 AAGTGACTCAGATGCAGAGTCACTCTCGGGCAAGCTCTCCAACCTCCACCGTCTCCAACACCAGCACC
 GAGGGCTTCGGGGGCATCATGTCTTTTGGCAGCAGCCTCTATCGGAACCACAGTACCAGCTTCAGTCTTT
 CAAACCTCACACTGCCCACAAAGGTGCCCGAGAGAAGGCCACGCCCCCTCCCCAGTCTGAAAGGAAACAG
 GAGGGCGTTAGTGGATCAGAAGTCATCTGTCAATTAACACAGCCCAACAGTGAAAAGAGAACCCTCCATCA
 CCCCAGGGTCGATCCAGCAATTCAGTGAAGAACAGCAGTTTCTGAAGGAGGTGGTGACAGCGTGTGG
 ACGGCCAGGGAGTTGGCTGGCTCAACATGAAAAGGTGCGCCGGCTGCTGGAGAGCGAGCAGCTGCGAGT
 CTTTGTCTGAGCAAGCTGAACCGCATGGTGCAGTCAAGGACGATGCCCGGCAGGACATCATCCCGGAT
 GTGGAGATCAGTCGGAAGGTGTACAAGGGAATGTTAGACCTCCTCAAGTGTACAGTCTCAGCTTGGAGC
 AGTCTATGCCACGCGGGTCTGGGTGGCATGGCCAGCATCTTTGGCTTTTGGAGATTGCCAGACCCA
 CTAATAAGTAAAGAACCAGACAAGCGGAAGAGAAGTCCAACAGAAAGTGTAAATACCCCAAGTTGGCAAG
 GATCCTGGCCTAGCTGGCGGGGGACCCAAAGGCTATGGCACAACCTGAGAGTTCACAACCTGGGACCTC
 GGGCACCAAGTGCCACAGGAAAGGGTCTAAGGAACTGGACACCAGAAGTTTAAAGGAAGAAAATTTTAT
 AGCATCTATTGGGCTGAAGTAATCAAACCTGTCTTTGACCTTGGTGAAGCAGAGGAGAAAAGTCCAG
 ATCAGCGCAGACAGTGGTGTGAGCCTGACGTCTAGTCCAGAGGACTGATCAAGACTCTGTATCGGCG
 TGAGTCCAGCTGTTATGATCCGACGCTCAAGTCAAGTCTGAAGTATGACACCGTGGTGAATAGCTC
 TGGAGAGACCCTTGGAGCTGACAGTACTTGGAGCAGCAATGCAGGTGATGGACCAGTGGCAGGGCAGT
 GTTACCTGGCAAGCTCTCGGGCACTTTGTCTGATAGTAAAATGAGACCAACTCTGCCACAAGCACCA
 TCTTTGGTAAAGCCACAGCTTGAAGCCAAGCATAAAGGAGAAGCTGGCAGGCAGCCCCATTCTGACTTC
 TGAAGATGTGAGCCAGCGAGTCTATCTCTATGAGGGACTCCTAGGCAAAGAGCGTCTACTTTATGGGAC
 CAAATGCAATTCTGGGAAGATGCCTTCTTAGATGCTGTGATGTTGGAGAGAGAAGGGATGGGTATGGACC
 AGGGTCCCCAGGAAATGATCGACAGGTACCTGTCCCTTGGAGAACATGACCCGGAAGCGCCTGGAAGATGA
 TGAAGATCGCTTGGTGGCCACACTTCTGCACAACCTCATCTCCTACATGCTGTGATGAAGGTAATAAG
 AATGACATCCGCAAGAAGGTGAGGCGCCTAATGGGAAAGTCGCACATTGGGCTTGTGTACAGCCAGCAAA
 TCAATGAGGTGCTTATCAGCTGGCGAACCTGAATGGACGCGATCTCTCTATCTGGTCCAGTGGCAGCCG
 GCACATGAAGAAGCAGACATTTGTGGTACATGCAGGGACAGATACAACGGAGATATCTTTTTCATGGAG
 GTGTGCGATGACTGTGTGGTGTGGCTAGTAACATCGGAACAGTGTATGAGCGCTGGTGGTACGGAAGC
 TCATCAACATGACCTACTGTCCCAAGACGAAGGTGTTGTGCTTGTGGCGTAGAAATGGCTCTGAGACCCA
 GCTCAACAAGTTCTATACTAAAAAGTGTGCGGAGCTGACTACTGTGTAAGGACAGCATGGAGCGCGCT
 GCCGCCGACAGCAAAGCATCAAACCCGGACCTGAATTGGGTGGCGAGTTCCTGTGCAGGACCTGAAGA
 CTGGTGGGGTGGCCTGCTGCAGGTGACCTGGAAGGGATCAACCTCAAATTCATGCACAATCAGGTTTT
 CATAGAGCTGAATCACATTAAGGAGTGAATACAGTTCGAGGCGTCTTTGTCTGGAGGAATTTGTCTCT
 GAAATTAAGAAGTGGTGAAGCCACAAGTACAAGACCAATGGCCACGAAATCTGCTACTCCGTATTAT
 GTCTTCTCGTACGTGGCTGCAGTTCATAGCAGTGAAGGATCTCAGAACCCCGCCCGCCTGTCTC
 TAGC

AGCGGACCGACGCGTACGCGGCCGCTCGAG - GFP Tag - GTTTAA

Protein Sequence: >RG220015 representing NM_130470
 Red=Cloning site Green=Tags(s)

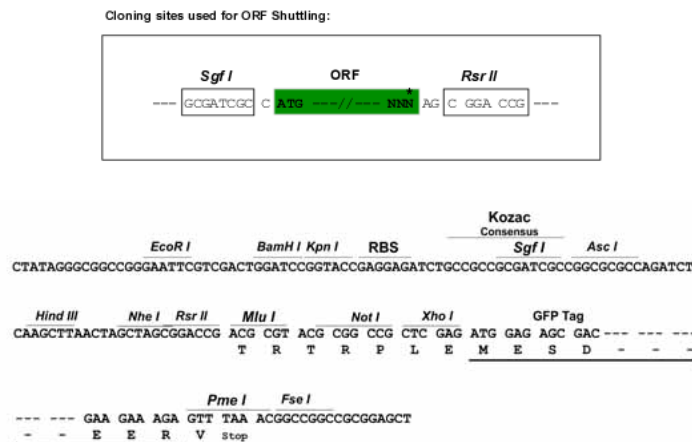
```

MVQKKKFCPRLLDYLVIIGARHPSSDSVAQTPELLRRYPLEDHTEFPLPPDVVFFCQPEGCLSVRQRMS
LRDDTSFVFTLTDKDTGVTRYGICVNFYRSFQKRISKEKEGGAGSRGKEGTHATCASEEGGTESSESGS
SLQPLSADSTPDVNQSPRGKRRAKAGSRSRNSTLTLSCVL SHYFFFSTFRECLYTLKRLVDCSERLLGK
KLGIPRGVQRDTMWIRIFTGSLLEVEKSSALLHDLREIEAWIYRLLRSPVPVSGQKRVDIEVLPQELQPAL
TFALPDPSPRFTLVDFPLHLPLELLGVDAQLQVLT CILLEHKVVQLQRDYNALSMSVMAFVAMIYPLEYMF
PVIPLLPCTMASAEQLLLAPTPYIIGVPASFFLYKLDKMPDDVWLVDLDSNRVIAPTNAEVLPIPEPE
SLELKKHLKQALASMSLNTQPIILNLEKFHEGQEIPLLLGRPSNDLQSTPSTEFNLIYGNVDVSDVATR
VAMVRRFNSANVLQGFQMHTRTLRLFPRPVVAFQAGSFLASRPRQTPFAEKLARTQAVEYFGEWILNPTN
YAFQRIHNNMFDPALIGDKPKWYAHQLQPIHYRVYDSNSQLAEALSVPPERDSDEPTDSDSGSDSMDYDD
SSSSYSSLGDFVSEMMKCDINGDTPNVDPLTHAALGDASEVEIDELQNQKEAEEP GPDSSENSQENPLRS
SSSTTASSPSTVIHGANSEPADSTEMDDKAAVGVSKPLPSVPPSIGKSNMDRRQAEIGESVRRRIYDN
PYFEPQYGFPEEDEDQGESYTPRFSQHVSNGRAQKLLRPNSLRLASDSAESDRASSPNSTVSNSTST
EGFGGIMSFASSLYRNHSTSFSLSNLTLPTKGAREKATPFPSLKGNNRALVDQKSSVIKHSPTVKREPPS
PQGRSSNSSENQQFLKEVVHSLVDGQGVWLNMMKVRRLLLESEQLRVFVLSKLNRMVQSEDDARQDIIPD
VEISRKYKGMDDLKCTVLSLEQSYAHAGLGGMASIFGLLEIAQTHYYSKEPKRKRSPTESVNTPVVGK
DPGLAGRGDPKAMAQLRVPQLGPRAPSATGKGPKELDTRSLKEENFIASIGPEVIKPVFDLGETEEKKSQ
ISADSGVSLTSSSQRTDQDSVIGVSPAVMIRSSSQDSEVSTVSNSSGETLGADSDLSSNAGDGGGGEGS
VHLASSRGTLSDSEIETNSATSTIFGKAHSLKPSIKEKLAGSPIRTSEDVSQRVYLYEGLLGKERSTLWD
QMWFWEDAFLDAYMLEREGMGMDQGPQEMIDRYLSLGEHDKRLEDEDEDRLATLLHNLISYMLLMKVNK
NDIRKKVRRRLMGKSHIGLVYSQQINEVL DQLANLNGRDL SIWSSGSRHMKKQTFVVHAGDTNGDIFFME
VCDDCVLRSNIGTVYERWYWEKLNIMTYCPKTKVLC L WRRNGSETQLNKFYTKKCRELYYCVKDSMERA
AARQOSIKPPELGGFFVQDLKTGEGGLLQVTLEGINLKFHMNQVFIELNHIKKCNTVRGVFVLEEFVP
EIKEVVSCHKYKTPMAHEICYSVLC LFSYVAAVHSSEEDLRTPRPVSS
  
```

SGP TRRRLE - GFP Tag - V

Restriction Sites: SgfI-RsrII

Cloning Scheme:

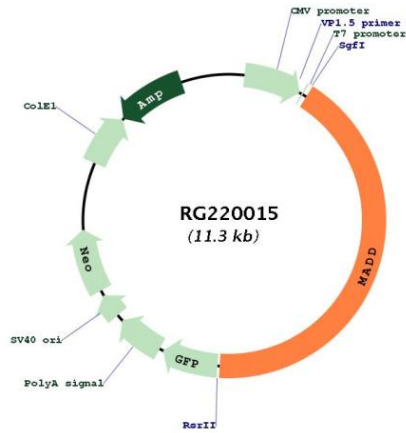


ACCN: NM_130470

ORF Size: 4764 bp

OTI Disclaimer:	The molecular sequence of this clone aligns with the gene accession number as a point of reference only. However, individual transcript sequences of the same gene can differ through naturally occurring variations (e.g. polymorphisms), each with its own valid existence. This clone is substantially in agreement with the reference, but a complete review of all prevailing variants is recommended prior to use. More info
OTI Annotation:	This clone was engineered to express the complete ORF with an expression tag. Expression varies depending on the nature of the gene.
Components:	The ORF clone is ion-exchange column purified and shipped in a 2D barcoded Matrix tube containing 10ug of transfection-ready, dried plasmid DNA (reconstitute with 100 ul of water).
Reconstitution Method:	<ol style="list-style-type: none">1. Centrifuge at 5,000xg for 5min.2. Carefully open the tube and add 100ul of sterile water to dissolve the DNA.3. Close the tube and incubate for 10 minutes at room temperature.4. Briefly vortex the tube and then do a quick spin (less than 5000xg) to concentrate the liquid at the bottom.5. Store the suspended plasmid at -20°C. The DNA is stable for at least one year from date of shipping when stored at -20°C.
RefSeq:	NM_130470.1 , NP_569826.1
RefSeq Size:	5973 bp
RefSeq ORF:	4767 bp
Locus ID:	8567
UniProt ID:	Q8WVG6
Cytogenetics:	11p11.2
Protein Families:	Druggable Genome
Gene Summary:	Tumor necrosis factor alpha (TNF-alpha) is a signaling molecule that interacts with one of two receptors on cells targeted for apoptosis. The apoptotic signal is transduced inside these cells by cytoplasmic adaptor proteins. The protein encoded by this gene is a death domain-containing adaptor protein that interacts with the death domain of TNF-alpha receptor 1 to activate mitogen-activated protein kinase (MAPK) and propagate the apoptotic signal. It is membrane-bound and expressed at a higher level in neoplastic cells than in normal cells. Several transcript variants encoding different isoforms have been described for this gene. [provided by RefSeq, Jul 2008]

Product images:



Circular map for RG220015