

Product datasheet for **RG220003**

NDRG2 (NM_201539) Human Tagged ORF Clone

Product data:

Product Type: Expression Plasmids
Product Name: NDRG2 (NM_201539) Human Tagged ORF Clone
Tag: TurboGFP
Symbol: NDRG2
Synonyms: SYLD
Mammalian Cell Selection: Neomycin
Vector: pCMV6-AC-GFP (PS100010)
E. coli Selection: Ampicillin (100 ug/mL)
ORF Nucleotide Sequence: >RG220003 representing NM_201539
Red=Cloning site Blue=ORF Green=Tags(s)

TTTTGTAATACGACTCACTATAGGGCGCCGGGAATTCGTCGACTGGATCCGGTACCGAGGAGATCTGCC
GCC**CGATCGCC**

ATGGCGGAGCTGCAGGAGGTGCAGATCACAGAGGAGAAGCCACTGTTGCCAGGACAGACGCCTGAGGCGG
CCAAGGAGGCTGAGTTAGCTGCCGAATCCTCCTGGACCAGGGACAGACTCACTCTGTGGAGACACCATA
CGGCTCTGTCACTTTCACTGTCTATGGCACCCCAAACCCAAACGCCAGCGATCCTTACCTACCACGAT
GTGGGACTCAACTATAAATCTTGCTTCCAGCCACTGTTTCAGTTCGAGGACATGCAGGAAATCATTAGA
ACTTTGTGCGGGTTCATGTGGATGCCCCGGAATGGAAGAGGGAGCCCTGTGTTCCCTTTGGGATATCA
GTACCCATCTCTGGACCAGCTTGCAGACATGATCCCTTGCCTCCTGCAGTACCTAAATTTCTCTACAATA
ATTGGAGTTGGTGTGGAGCTGGAGCCTACATCCTGGCGAGATATGCTCTTAACCCCGGACACTGTTG
AAGGTCTGTCCCTCATCAACATTGATCCCAATGCCAAGGGTTGGATGGATTGGGCAGCCACAAGCTAAC
AGGCCTCACCTCTCCATTCCGGAGATGATCCTTGGACATCTTTTCAGCCAGGAAGAGCTCTCTGGAAT
TCTGAGTTGATACAAAAGTACAGAAATACATTACACATGCACCCAACCTGGATAACATTGAATTGACT
GGAACAGCTACAACAACCGCCGAGACCTGAACTTTGAGCGTGGAGGTGATACCCCTCAGGTGTCCTGT
GATGCTGGTGGTAGGAGACCAAGCACCTCATGAAGATGCAGTGGTGAATGTAACCTAAAACCTGGACCC
ACCCAGACCTCGTTCCTCAAGATGGCTGACTCCGGAGGTGAGCCAGCTGACTCAGCCAGGCAAGCTGA
CCGAGGCCTTCAAGTACTTCTGCAAGGATGGGCTACATGGCCTCATCCTGCATGACTCGCCTGTCCCG
GTCTCGTACAGCCTCTCTGACCAGTGCAGCATCCGTTGATGGCAACCGGTCCCGCTCTCGCACCCCTGTCC
CAGAGCAGCGAGTCTGGAATCTTTCTCGGGCCCCCGGGGCACACCATGGAGTCTCCTGT

ACCGTACGCGGCCGCTCGAG - GFP Tag - GTTTAA



[View online »](#)

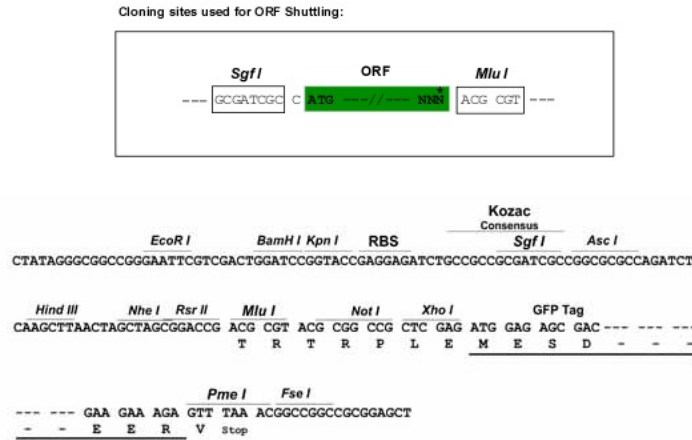
Protein Sequence: >RG220003 representing NM_201539
 Red=Cloning site Green=Tags(s)

MAELQEVQITEEKPLLPQGTPEAAKEAELARILLDQGQTHSVETPYGSVTFVYGTTPKPKRPAILTYHD
 VGLNYSKCFQPLFQFEDMQEIIQNFVVRVHVDAPGMEEGAPVFPLGYQYPSLDQLADMIPCVLQYLNFS
 TIGVGVGAGAYILARYALNHPDVEGLVLEINIDPNAKGWMDWAHKLTLGSSIPMILGHLFSQEELSGN
 SELIQKYRNIITHAPNLNIELELWNSYNNRRDLNFERGGDITLRCPVMLVVGDAQPHEDAVVECNKLD
 P TQTSFLKMADSGGQPQLTOPGKLEAFKYFLQGMGYMASSCMTRLRSRRTASLTSASVSDGNRSRRTLS
 QSSSEGLTSSGPPGHTMEVSC

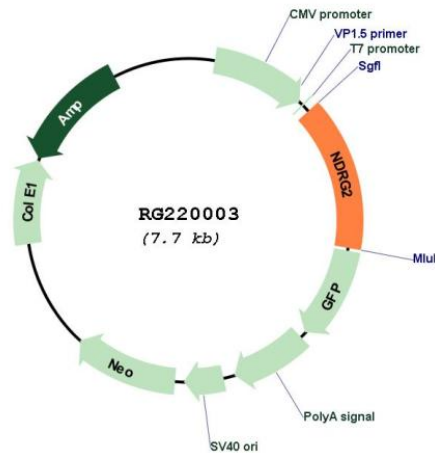
TRTRPLE - GFP Tag - V

Restriction Sites: SgfI-MluI

Cloning Scheme:



Plasmid Map:



ACCN: NM_201539

ORF Size:	1113 bp
OTI Disclaimer:	The molecular sequence of this clone aligns with the gene accession number as a point of reference only. However, individual transcript sequences of the same gene can differ through naturally occurring variations (e.g. polymorphisms), each with its own valid existence. This clone is substantially in agreement with the reference, but a complete review of all prevailing variants is recommended prior to use. More info
OTI Annotation:	This clone was engineered to express the complete ORF with an expression tag. Expression varies depending on the nature of the gene.
Components:	The ORF clone is ion-exchange column purified and shipped in a 2D barcoded Matrix tube containing 10ug of transfection-ready, dried plasmid DNA (reconstitute with 100 ul of water).
Reconstitution Method:	<ol style="list-style-type: none">1. Centrifuge at 5,000xg for 5min.2. Carefully open the tube and add 100ul of sterile water to dissolve the DNA.3. Close the tube and incubate for 10 minutes at room temperature.4. Briefly vortex the tube and then do a quick spin (less than 5000xg) to concentrate the liquid at the bottom.5. Store the suspended plasmid at -20°C. The DNA is stable for at least one year from date of shipping when stored at -20°C.
RefSeq:	NM_201539.1 , NP_963833.1
RefSeq Size:	2052 bp
RefSeq ORF:	1116 bp
Locus ID:	57447
UniProt ID:	Q9UN36
Cytogenetics:	14q11.2
Gene Summary:	This gene is a member of the N-myc downregulated gene family which belongs to the alpha/beta hydrolase superfamily. The protein encoded by this gene is a cytoplasmic protein that may play a role in neurite outgrowth. This gene may be involved in glioblastoma carcinogenesis. Alternative splicing results in multiple transcript variants. [provided by RefSeq, Aug 2017]