

## Product datasheet for **RG219981**

### **RNF214 (NM\_001077239) Human Tagged ORF Clone**

#### **Product data:**

Product Type:	Expression Plasmids
Product Name:	RNF214 (NM_001077239) Human Tagged ORF Clone
Tag:	TurboGFP
Symbol:	RNF214
Mammalian Cell Selection:	Neomycin
Vector:	pCMV6-AC-GFP (PS100010)
E. coli Selection:	Ampicillin (100 ug/mL)



[View online »](#)

ORF Nucleotide  
Sequence:

>RG219981 representing NM\_001077239  
Red=Cloning site Blue=ORF Green=Tags(s)

TTTTGTAATACGACTCACTATAGGGCGGCCGGGAATTCGTCGACTGGATCCGGTACCGAGGAGATCTGCC  
GCCGCGATCGCC

ATGGCAGCGTCTGAGGTTGCTGGTGTGTGGCCAATGCCCCAGTCCTCCGGAATCTTCTAGTTTATGTG  
CTTCCAAATCAGACGAAGGTCTCCAGATGGTCTAAGCACCAAAGACTCTGCACAGAAGCAGAAGAACTC  
GCCTCTGTTGAGTGAAGTAGCCAAACAATAACCAAGGAGAATAACAGAAATGTCCATTTGGAGCACTCA  
GAGCAGAACTCCTGGTTCATCAGCAGGTGACACCTCAGCAGCGCACCAGGTGGTTTTAGGAGAAAAGTTGA  
TAGCCACAGCCCTTTGTCTTTCTGGCAGTGGGTCTCAGTCTGATTTGAAGGATGTGGCCAGCACAGCAGG  
AGAGGAGGGGGACACAAGCCTTCGGGAGAGCCTCCATCCAGTCACTCGGTCTCTTAAGGCAGGGTGCAT  
ACTAAGCAGCTTGCTCCAGGAATTGCTCTGAAGAGAAATCCCCACAACCTCCATCCTAAAGGAAGGTA  
ACAGGGACACAAGCTTGGATTTCCGACCTGTAGTGTCTCCAGCAAATGGGGTTGAAGGAGTCCGAGTGA  
TCAGGATGATGATCAAGATAGCTCTTCCCTGAAGCTTTCTCAGAACATTGCTGTACAGACTGACTTTAAG  
ACAGCTGATTCAGAGGTAACACAGATCAAGATATTGAAAAGAATTTGGATAAAATGATGACAGAGAGAA  
CCCTGTTGAAAGAGCGTTACCAGGAGGTCTGGACAAACAGAGGCAAGTGGAGAATCAGCTCCAAGTGCA  
ATTAAGCAGCTTCAGCAAAGGAGAGAAGAGGAAATGAAGAATCACCGAGGATATTAAGGCTATTTCAG  
GATGTGACAATAAAGCGGGAAGAAACAAGAAGAAGATAGAGAAAGAGAAGAAGGAGTTTTTGCAGAAGG  
AGCAGGATCTGAAAGCTGAAATTTGAGAAGCTTTGTGAGAAGGGCAGAAGAGAGGTGTGGGAAATGGAAC  
GGATAGACTCAAGAATCAGGATGGCGAAATAAATAGGAACATTATGGAAGAGACTGAACGGGCTGGAAG  
GCAGAGATCTTACTACTAGAGAGCCGAAAGAGTTACTGGTACTGAACTAGAAGAAGCAGAAAAAGAGG  
CAGAATTGCACCTTACTTACCTCAAGTCAACTCCCCAACACTGGAGACAGTTCGTTCCAACAGGAGTG  
GGAGACGAGACTGAATGGAGTTCGGATAATGAAAAGAATGTTTCGTGACCAATTAATAGTCATATCCAG  
TTAGTGAGGAACGGAGCCAAGCTGAGCAGCCTTCTCAAATCCCTACTCCCACTTTACTCCACCCCAT  
CAGAGACAGACTTCATGCTTCAGGTGTTTCAACCCAGTCCCTCTCTGGCTCCTCGGATGCCTTTCTCCAT  
TGGGCAGGTCACAATGCCATGGTTATGCCAGTGCAGATCCCCGCTCCTTGCTTTCCCAATCCTGAAC  
CCTGCCCTTTCCAGCCAGCCAGCCTTCTCACCCCTTCTGGCTCCCATGGCAGAAATAGCCCTGGCT  
TGGGTTCCCTTGTGAGCCCCACGGTCCACACATGCCCCCTGCCGCTCCATCCACCTCCCCAGGCTT  
GGGCGGTGTTAAGGCTTCTGCTGAACTCCCCGGCCCCAACCCAGTAGACAACTGGAGAAGATCCTGGAG  
AAGCTGCTGACCCGTTCCACAGTGAATAAAGGCCAGATGACCAACATTCTTCAGCAGATCAAGACAG  
CAGTACCACCATGGCAGGCCTGACCATGGAGGAATTATCCAGTTGGTTGCTGCACGACTGGCAGAAC  
TGAGCGGGTGGCAGCAAGTACTCAGCCACTTGGTGCATCCGGGCTTGTCCCTGCTCCACTGGCCCAA  
ATCAGTACCCCAATGTTCTTGCCTTCTGCCAAGTTTCATATCCTGGAAGGTCTTCACATGCTCCAGCCA  
CCTGTAAGCTATGTCTAATGTGCCAGAACTCGTCCAGCCAGTGAAGTGCATCCAATGGCGTGTACCCA  
TGATTGCACAAGGAGTGTATCAAATCTGGGCCAGACCAACACAAATGACACTGTCCCTTTGTCCA  
ACTCTTAA

ACGCGTACGCGGCCGCTCGAG - GFP Tag - GTTTAA

**Protein Sequence:** >RG219981 representing NM\_001077239  
 Red=Cloning site Green=Tags(s)

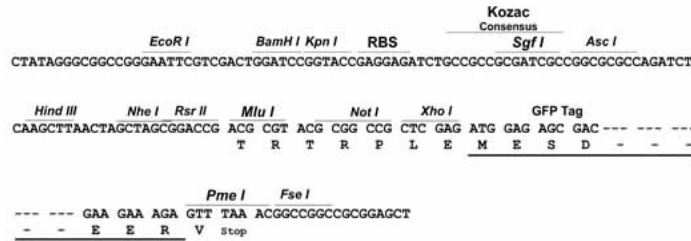
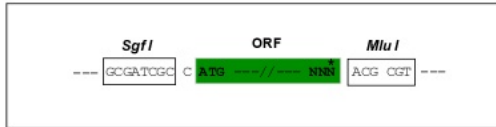
MAASEVAGVVANAPSPPESSSLCASKSDEGLPDGLSTKDSAQKQKNSPLLSVSSQTITKENNRNVHLEHS  
 EQNPGSSAGDTSAAHQVVLGENLIATALCLSGSGSQSDLKDVASTAGEEGDTSRESLHPVTRSLKAGCH  
 TKQLASRNCSEEEKSPQTSILKEGNRDTSLDFRPVVSPANGVEGVRVDQDDDDQSSSLKLSQNIQVQDFK  
 TADSEVNTDQDIEKNLDKMMTERTLLKERYQEVLDKQRQVENQLQVQLKQLQQRREEEMKNHQEILKAIQ  
 DVTIKREETKKKIEKEKKEFLQKEQDLKAEIEKLCCKGRREVWEMELDRLKNQDGEINRNIMEETERAWK  
 AEILSLESRKELLVLKLEEAKEAELHLTYLKSTPPTLETVRSKQEWETRLNGVRIIMKKNVRDQFNHIQ  
 LVRNGAKLSSLPQIPTPTLPPPPSETDFMLQVFPSPSLAPRMPFSIGQVTMPMVMSADPRSLSPILN  
 PALSQPSQPSSPLPGSHGRNSPGLGSLVSPHGHMPPAASIPPPPGLGGVKASAETPRPQPVDKLEKILE  
 KLLTRFPQCNAQMTNIIQQIKTARTTMAGL TMEELIQLVAARLAEHERVAASTQPLGRIRALFPAPLAQ  
 ISTPMFLPSAQVSYPRSSHAPATCKLCLMCQKLVQPSSELHPMACTHVLHKECIKFWAQTNTNDTCFPC  
 TLK

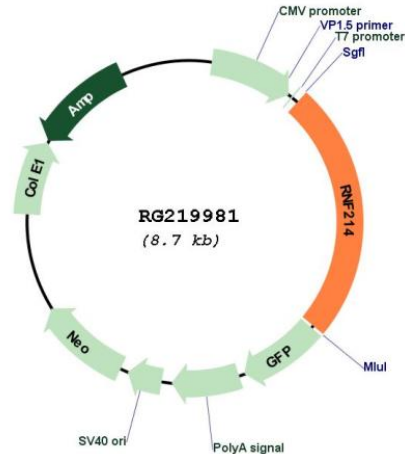
TRTRPLE - GFP Tag - V

**Restriction Sites:** SgfI-MluI

**Cloning Scheme:**

Cloning sites used for ORF Shutting:



**Plasmid Map:**


**ACCN:** NM\_001077239

**ORF Size:** 2109 bp

**OTI Disclaimer:** The molecular sequence of this clone aligns with the gene accession number as a point of reference only. However, individual transcript sequences of the same gene can differ through naturally occurring variations (e.g. polymorphisms), each with its own valid existence. This clone is substantially in agreement with the reference, but a complete review of all prevailing variants is recommended prior to use. [More info](#)

**OTI Annotation:** This clone was engineered to express the complete ORF with an expression tag. Expression varies depending on the nature of the gene.

**Components:** The ORF clone is ion-exchange column purified and shipped in a 2D barcoded Matrix tube containing 10ug of transfection-ready, dried plasmid DNA (reconstitute with 100 ul of water).

**Reconstitution Method:**

1. Centrifuge at 5,000xg for 5min.
2. Carefully open the tube and add 100ul of sterile water to dissolve the DNA.
3. Close the tube and incubate for 10 minutes at room temperature.
4. Briefly vortex the tube and then do a quick spin (less than 5000xg) to concentrate the liquid at the bottom.
5. Store the suspended plasmid at -20°C. The DNA is stable for at least one year from date of shipping when stored at -20°C.

**RefSeq:** [NM\\_001077239.1](#), [NP\\_001070707.1](#)

**RefSeq Size:** 2695 bp

RefSeq ORF: 2112 bp  
Locus ID: 257160  
UniProt ID: Q8ND24  
Cytogenetics: 11q23.3