

Product datasheet for **RG219976**

PODXL (NM_001018111) Human Tagged ORF Clone

Product data:

Product Type:	Expression Plasmids
Product Name:	PODXL (NM_001018111) Human Tagged ORF Clone
Tag:	TurboGFP
Symbol:	PODXL
Synonyms:	gp135; Gp200; PC; PCLP; PCLP-1; PDX; PODXL1
Mammalian Cell Selection:	Neomycin
Vector:	pCMV6-AC-GFP (PS100010)
E. coli Selection:	Ampicillin (100 ug/mL)



[View online »](#)

ORF Nucleotide Sequence:

>RG219976 representing NM_001018111
 Red=Cloning site Blue=ORF Green=Tags(s)

TTTTGTAATACGACTCACTATAGGGCGGCCGGGAATTCGTCGACTGGATCCGGTACCGAGGAGATCTGCC
 GCC**GCGATCGCC**

ATGCGCTGCGCGCTGGCGCTCTCGGCGTCTGCTACTGTTGTCAACGCCCGCTGCTGCCGTCGTCGC
 CGTCGCCGTCGCCGTCGCCCTCCAGAATGCAACCCAGACTACTACGGACTCATCTAACAAAACAGCACC
 GACTCCAGCATCCAGTGTCAACATCATGGCTACAGATACAGCCAGCAGACAGTCCCACTTCCAAG
 GCCAACGAAATCTTGGCCTCGGTCAAGGCGACCACCTTGGTGTATCCAGTGACTCACGGGGACTACAA
 CCCTGGCTCAGCAAGTCTCAGGCCAGTCAACACTACCGTGGCTAGAGGAGGGCGGCTCAGGCAACCTAC
 TACCACCATCGAGAGCCCAAGAGCACAAAAAGTGCAGACACCACTACAGTTGCAACCTCCACAGCCACA
 GCTAAACCTAACACCACAAGCAGCCAGAATGGAGCAGAAGATAACAACAACTCTGGGGGAAAAGCAGCC
 ACAGTGTGACCACAGACCTCACATCCACTAAGGCAGAACATCTGACGACCCCTCACCTACAAGTCCACT
 TAGCCCCGACAACCCACTTCGACGCATCTGTGGCCACCCCAACAAGCTCGGGACATGACCATCTTATG
 AAAATTTCAAGCAGTTCAAGCACTGTGGCTATCCCTGGCTACACCTTACAAGCCCGGGGATGACCACCA
 CCCTACTAGAGACAGTGTTCACCATGTGAGCCAGGCTGGTCTTGAACCTCTGACCTCGGGTGTCTGCC
 CACCTTGGCCTCCCAAAGTGTGGGATTACAGCGTCATCGGTTATCTCGCAAAGAACTCAACAGACCTCC
 AGTCAGATGCCAGCCAGCTCTACGGCCCTTCTCCAGGAGACAGTGCAGCCACGAGCCCGGCAACGG
 CATTGAGAACACCTACCTGCCAGAGACCATGAGTCCAGCCCCACAGCAGCATCAACTACCCACCGATA
 CCCCAAAACACCTTCTCCACTGTGGCTCATGAGAGTAACTGGGCAAAGTGTGAGGATCTTGAGACACAG
 ACACAGAGTGAGAAGCAGCTCGTCTGAACCTCACAGGAAACACCTCTGTGCAGGGGGCGCTTCGGATG
 AGAAATTTGATCTCACTGATATGCCGAGCAGTCAAAGCCACCTTCAACCCGGCCCAAGATAAGTCCGGCAT
 ACGGCTGGCATCTGTTCCAGGAAGTCAGACCGTGGTCGTCAAAGAAATCACTATTACACTAAGCTCCCT
 GCCAAGGATGTGTACGAGCGGCTGAAGGACAAATGGGATGAACTAAAGGAGGCAGGGTCACTGACATGA
 AGCTAGGGGACCAGGGGCCACGGAGGAGGCGGAGGACCGCTTACAGATGCCCTCATCATCACCATCGT
 CTGCATGGCATATTCTGCTCCTCGTGGCGCCCTCTATGGCTGCTGCCACCAGCGCCTCTCCAGAGG
 AAGGACCAGCAGCGGCTAACAGAGGAGCTGCAGACAGTGGAGAATGGTTACCATGACAACCCAACACTGG
 AAGTGTGAGACCTCTTCTGAGATGCAGGAGAAGAAGTGGTCAAGCTCAACGGGGAGCTGGGGGACAG
 CTGGATCGTCCCTCTGGACAACCTGACCAAGGACGACCTGGATGAGGAGGAAGACACACACCTC

ACGCGTACGCGGCCGCTCGAG - GFP Tag - GTTTAA

Protein Sequence:

>RG219976 representing NM_001018111
 Red=Cloning site Green=Tags(s)

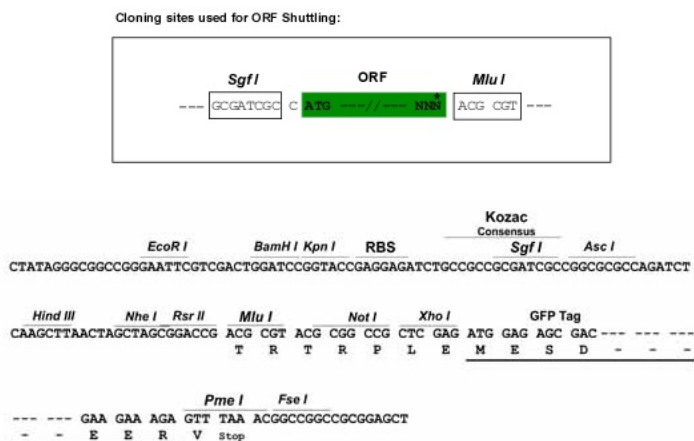
MRCALALSALLLLSTPPLLSPSPSPSPSQNATQTTDSSNKTAPTPASSVTIMATDTAQQSTVPTSK
 ANEILASVKATTLGVSSDSPGTTTLLAQVSGPVNTTVARGGSGNPTTTIESPKSTKSADTTTATSTAT
 AKPNTTSSQNGAEDTTNSGGKSSHSVTDLTSTKAEHLTPHPTSPLSPRQPTSTHPVATPTSSGHDHLM
 KISSSSSTVAIPGYFTSPGMTTLLLETVFHHVSQAGLELLTSGDLPTLASQSAGITASSVISQRTQOTS
 SQMPASSTAPSSQETVQPTSPATALRPTLPETMSSSPTAASTTHRYPKTPSPTVAHESNWAKCEDLETQ
 TQSEKQLVLNLTGNTLCAGGASDEKLISLICRAVKATFNPAQDKCGIRLASVPGSQTVVVEIITHTKLP
 AKDVYERLKDQWDELKEAGVSDMKLGDQGPPEEAEDRFSMPLIITIVCMASFLLVAALYGCHQLRSQR
 KDQQLTEELQTVENGYHDNPTLEVMTSSEMQEKKVVSLENGELGDSWIVPLDNLTKDDLDEEEDTHL

TRTRPLE - GFP Tag - V

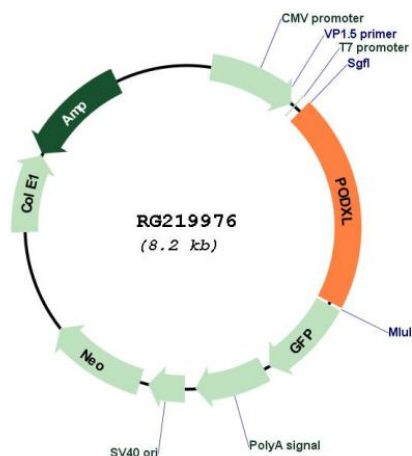
Restriction Sites:

Sgfl-Mlul

Cloning Scheme:



Plasmid Map:



ACCN:	NM_001018111
ORF Size:	1674 bp
OTI Disclaimer:	The molecular sequence of this clone aligns with the gene accession number as a point of reference only. However, individual transcript sequences of the same gene can differ through naturally occurring variations (e.g. polymorphisms), each with its own valid existence. This clone is substantially in agreement with the reference, but a complete review of all prevailing variants is recommended prior to use. More info
OTI Annotation:	This clone was engineered to express the complete ORF with an expression tag. Expression varies depending on the nature of the gene.
Components:	The ORF clone is ion-exchange column purified and shipped in a 2D barcoded Matrix tube containing 10ug of transfection-ready, dried plasmid DNA (reconstitute with 100 ul of water).
Reconstitution Method:	<ol style="list-style-type: none">1. Centrifuge at 5,000xg for 5min.2. Carefully open the tube and add 100ul of sterile water to dissolve the DNA.3. Close the tube and incubate for 10 minutes at room temperature.4. Briefly vortex the tube and then do a quick spin (less than 5000xg) to concentrate the liquid at the bottom.5. Store the suspended plasmid at -20°C. The DNA is stable for at least one year from date of shipping when stored at -20°C.
RefSeq:	NM_001018111.3
RefSeq Size:	5999 bp
RefSeq ORF:	1677 bp
Locus ID:	5420
UniProt ID:	O00592
Cytogenetics:	7q32.3
Protein Families:	Transmembrane
Gene Summary:	This gene encodes a member of the sialomucin protein family. The encoded protein was originally identified as an important component of glomerular podocytes. Podocytes are highly differentiated epithelial cells with interdigitating foot processes covering the outer aspect of the glomerular basement membrane. Other biological activities of the encoded protein include: binding in a membrane protein complex with Na ⁺ /H ⁺ exchanger regulatory factor to intracellular cytoskeletal elements, playing a role in hematopoietic cell differentiation, and being expressed in vascular endothelium cells and binding to L-selectin. [provided by RefSeq, Jul 2008]