

Product datasheet for **RG219952**

Mupp1 (MPDZ) (NM_003829) Human Tagged ORF Clone

Product data:

Product Type:	Expression Plasmids
Product Name:	Mupp1 (MPDZ) (NM_003829) Human Tagged ORF Clone
Tag:	TurboGFP
Symbol:	MPDZ
Synonyms:	HYC2; MUPP1
Mammalian Cell Selection:	Neomycin
Vector:	pCMV6-AC-GFP (PS100010)
E. coli Selection:	Ampicillin (100 ug/mL)
ORF Nucleotide Sequence:	>RG219952 representing NM_003829 Red=Cloning site Blue=ORF Green=Tags(s)

TTTTGTAATACGACTCACTATAGGGCGGCCGGAATTCGTCGACTGGATCCGGTACCGAGGAGATCTGCC
GCC**CGATCGCC**

ATGGTGTGCTGTCGCGAACTGTGCCACCCACCACCAATCAGAATTGGATAGCCTGGACTTATGTGATA
TTGAGCTAACAGAAAAGCCTCACGTAGATCTAGGTGAGTTCATCGGGTCATCAGAGACAGAGGATCCAGT
GCTGGCGATGACTGATCGGGTCAGAGTACAGAAGAGGTTCAAGCACCTTTGGCCATGTGGGAGGCTGGC
ATTCAGCACATAGAGCTGGAGAAAAGGAGCAAAGGACTTGGTTTTAGCATTTTAGATTATCAGGATCCAA
TTGATCCAGCAAGCACTGTGATTATAATTCGTTCTTTGGTGCCTGGCGGATTGCTGAAAAGGATGGACG
ACTTCTTCCTGGTGACCGACTCATGTTTGTAAACGATGTTAACTTGGAAAACAGCAGTCTTGAGGAAGCT
GTAGAAGCACTGAAGGGAGCACCGTCAGGGACTGTGAGAATAGGAGTTGCTAAGCCTTTACCCCTTTCAC
CAGAAGAAGGTTATGTTTCTGCTAAGGAGGATTCTTTCTCTACCCACCACACTCCTGTGAGGAAGCAGG
GCTGGCTGACAAACCCCTCTTCAGGGCTGACTTGGCTCTGGTGGGCACAAATGATGCTGACTTAGTAGAT
GAATCCACATTTGAGTCTCCACTCTCCTGAAAATGACAGCATCTACTCTCAAGCCTCTATTTTAT
CTCTTCATGGCAGTTCCTGTGGTGATGGCCTGAACTATGGTCTCCCTCCATCATCTCCTCCTAAGGA
TGTTATTGAAAATCTTGTGATCCAGTACTTGATCTGCATATGTCTCTGGAGAACTATATACCCAGAAT
CTCCTGCAAAGACAGGATGAGAATACACCTTCGGTGGACATAAGTATGGGCTGCTTGGCTTTACTA
TAAATGACTACACACTGCAAATGCTATTGAACAACAATATGAATGTGAAAACACAATAGTGTGGACTGA
ATCTCATTACCAAGTGAAGTTATATCAAGTGCAGAACTTCCTTCTGTGCTACCCGATTCAGCTGAAAAG
GGCTCTGAGTACCTGCTTGAACAGAGCTCCCTGGCCTGTAATGCTGAGTGTGTCATGCTTCAAAATGTAT
CTAAAGAATCTTTTGAAGGACTATTAATATAGCAAAAGGCAATCTAGCCTAGGAATGACAGTTAGTGC
TAATAAAGATGGCTTGGGATGATCGTTCGAAGCATTATTCATGGAGGTGCCATTAGTCGAGATGGCCGG
ATTGCCATTGGGACTGCATCTGTCCATTAATGAAGAGTCTACCATCAGTGAACCAATGCCAGGCAC
GAGCTATGTTGAGAAGACATTCTCATTGGCCCTGACATAAAAATTACTTATGTGCTGCAGAACATTT
GGAAGAGTTCAAATAAGCTTGGGACAACAATCTGGAAGAGTAATGGCACTGGATATTTTTCTTCATAC



[View online >](#)

ACTGGCAGAGACATTCCAGAATTACCAGAGCGAGAAGAGGGAGAGGGTGAAGAAAGCGAACTTCAAACA
CAGCATATAGCAATTGGAATCAGCCCAGGCGGGTGAACCTCTGGAGAGAACCAAGCAAATCCTTAGGCAT
CAGCATTGTTGGTGGACGAGGGATGGGGAGTCCGCTAAGCAATGGAGAAGTGTAGGGGCATTTTCATC
AAACATGTTCTGGAAGATAGTCCAGCTGGCAAAAATGGAACCTTGAAACCTGGAGATAGAATCGTAGAGG
TGGATGGAATGGACCTCAGAGATGCAAGCCATGAACAAGCTGTGGAAGCCATTGCGAAAGCAGGCAACCC
TGTAGTCTTTATGGTACAGAGCATTATAAACAGACCAAGGAAATCCCCTTTGCCTTCCTTGCTGCACAAC
CTTTACCCTAAGTACAACCTTACGCAGCACTAACCATTGCTGACTCTCTACAAAACAACGCCGACAAGG
CACCCAGTCAGTCAGAGTCAGAGCCAGAGAAGGCTCCATTGTGCAGTGTGCCCCACCCCTCCTTCAGC
CTTTGCCGAAATGGGTAGTGATCACACAGTCATCTGCAAGCAAAAATCTCACAAGATGTGGACAAAGAG
GATGAGTTTGGTTACAGCTGGAAAAATATCAGAGAGCGTTATGGAACCCTAACAGGCGAGCTGCATATGA
TTGAACTGGAGAAAGGTCATAGTGGTTTGGCCTAAGTCTTGCTGGGAACAAAGACCGATCCAGGATGAG
TGTCTTCATAGTGGGATTGATCCAAATGGAGCTGCAGGAAAAGATGGTCGATTGCAAATTCAGATGAG
CTTCTAGAGATCAATGGTCAGATTTTATGGAAGAAGTCATCAGAATGCCTCATCAATCATTAAATGTG
CCCCTTCAAAGTAAAAAATTTTTATCAGAAAATAAGATGCAGTGAATCAGATGGCCGTATGCTCTGG
AAATGCAGTAGAACCTTTGCCTTCTAACTCAGAAAATCTTCAAAAATAAGGAGACAGAGCCAACTGTTACT
ACTTCTGATGCAGCTGTGGACCTCAGTTCAATTTAAAAATGTGCAACATCTGGAGCTTCCCAGGATCAGG
GGGGTTTGGGTATTGCTATCAGCGAAGAAGATACACTCAGTGGAGTCATATAAAGAGCTTAACAGAGCA
TGGGGTAGCAGCCACGGATGGACGACTCAAAGTCGGAGATCAGATACTGGCTGTAGATGATGAAATTGTT
GTTGGTTACCCTATTGAAAAGTTTATTAGCCTTCTGAAGACAGCAAAGATGACAGTAAAACCTTACCATCC
ATGCTGAGAAATCCAGATCCCAGGCTGTTCTTACGACAGCTGGTGCAGCCAGTGGAGAAAAAAGAACAG
CTCCCAGTCTCTGATGGTCCCACAGTCTGGCTCCCAGAACCGGAGTCCATCCGAAATACAAGCAGATCA
TCAACACCAGCAATTTTTGCTTCTGATCCTGCAACCTGCCCATTTATCCCTGGCTGCGAAACAACCATCG
AGATTTCAAAGGGCGAACAGGGCTGGCCTGAGCATCGTTGGGGTTTCCAGACACGCTGCTGGGTGCCAT
TATTATCCATGAAGTTTATGAAGAAGGAGCAGCATGTAAGATGGAAGACTCTGGGCTGGAGATCAGATC
TTAGAGGTGAATGGAATTGACTTGAGAAAAGGCCACACATGATGAAGCAATCAATGTCCTGAGACAGACGC
CACAGAGAGTGCAGCTGACACTCTACAGAGATGAGGCCCATACAAAAGAGGAGGAAGTGTGTGACACCTT
CACTATTGAGCTGCAGAAGAAGCCGGGAAAAGGCTAGGATTAAGTATTGTTGGTAAAAGAAACGATACT
GGAGTATTGTGTCAGACATTGTCAAAGGAGGAATTGCAGATGCCGATGGAAGACTGATGCAGGGAGACC
AGATATTAATGGTGAATGGGAAGACGTTTCGTAATGCCACCAAGAAGCGGTTGCCGCTTTGCTAAAGTG
TTCCTAGGCACAGTAACCTTGAAGTTGGAAGAATCAAAGCTGGTCCATTCCATTAGAGAGGAGGCCA
TCTCAAAGCAGCCAGGTGAGTGAAGGCAGCCTGTCATCTTCACTTTTCACTCTCTGGATCCAGTACAT
CTGAGTCACTGGAAAGTAGCTCAAAGAAGAATGCATTGGCATCTGAAATACAGGGATTAAGAACAGTCTGA
AATGAAAAGGGCCCTACTGACTCACTGGGAATCAGCATCGCTGGAGGAGTAGGCAGCCCACTTGGTGAT
GTGCCATATTTATTGCAATGATGCACCAACTGGAGTTGCAGCACAGACCCAAAAAAGTCAAGTGGGG
ATAGGATTGTCACCATCTGTGGCACATCCACTGAGGGCATGACTCACACCAAGCAGTTAACCTACTGAA
AAATGCATCTGGCTCCATTGAAATGCAGGTGGTTGCTGGAGGAGACGTGAGTGTGGTACAGGTCATCAG
CAGGAGCCTGCAAGTCCAGTCTTCTTCACTGGGCTGACGTCAAGCAGTATATTTAGGATGATTTAG
GACCTCCTCAATGAAGTCTATTACACTAGAGCGAGGACCAGATGGCTTAGGCTTCAAGTATAGTTGGAGG
ATATGGCAGCCCTCATGGAGACTTACCCATTTATGTTAAAACAGTGGTTGCAAAGGGAGCAGCCCTGAA
GACGGACGTCTGAAAAGGGCGATCAGATCATTGCTGTCAATGGGCAGAGTCTAGAAGGAGTCACCCATG
AAGAAGCTGTTGCCATCCTTAAACCGACAAAAGGCACTGTCACTTTGATGGTTCTCTCT

ACGCGTACGCGGCCGCTCGAG – GFP Tag – GTTTAA

Protein Sequence: >RG219952 representing NM_003829
 Red=Cloning site Green=Tags(s)

```

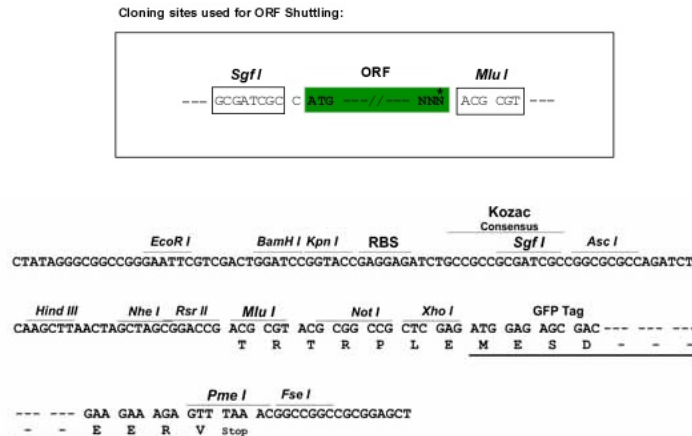
MVCCRRTVPPTTQSELDLDCDIELTEKPHVDLGEFIGSSETEDPVLAMTDAGQSTEEVQAPLAMWEAG
IQHIELEKGSKGLGFSILDYQDPIDPASTVIIIRSLVPGGIAEKDGRLLPGDRLMFVNDVNLNSSLEEA
VEALKGAPSGTVRIGVAKPLPLSPEEGYVSAKEDSFLYPPHSCEEAGLADKPLFRADLALVGTNDADLVD
ESTFESPYSPENDSIYSTQASILSLHGSSCGDGLNYGSSLPSSPPKDVIE NSCDPVLDLHMSLEELYTN
LLQRQDENTPSVDISMGPASGFTINDYTPANAIEQQYECENTIVWTE SHLPSEVISSAELPSVLPDSAGK
GSEYILLEQSSLACNAECVMLQNVSKESFERTINIAKGNSSLGMTVSANKDGLGMIVRSIIHGGAISRDR
IAIGDCILSINEESTISVTNAQARAMLRHSLIGPDIKITYVPAEHLEEFKISLQQSGRVMALDIFSSY
TGRDIPELPEREEGEGEESELQNTAYSNNWQPRRVELWREPSKSLGISIVGGRMGMSRLSNGEVMRGIFI
KHVLEDSAPAGKNGTLKPGDRIVEVDGMDLRDASHEQAVEAIRKAGNPVFMVQSIINRPRKSPLPSLLHN
LYPKYNFSSSTNPFADSLQINADKAPSQSESEPEKAPLCSVPPPPSAFAEMGSDHTQSSASKISQVDVKE
DEFGYSWKNIRERYGTLTGELHMIELEKGHSLGLSLAGNKDRSRMSVFIGIDPNGAAGKDGRLLQIADE
LLEINGQILYGRSHQNASSIIKCAPSKVKIIFIRNKDAVNQMAVCPGNAVEPLPSNSENQNKETEPTVT
TSDAAVDLSSFKNVQHLELPKDQGGGLIAISEEDTL SGV I I KSLTEHGVAATDGRLLKVG DQILAVDEIV
VGYPIEFISLLKTA KM TVKLT I HAENPDSQAVPSAAGAASGEKKNSSQSLMVPQSGSPEPESIRNTRS
STPAIFASDPATCPIIPGCETTIEISKGR TGLGLSIVGGS D TLLGAI I I HEVYEEGAACKDGR LWAGDQI
LEVNGIDL RKATHDEAINVLRQTPQRVRLTL YRDEAPYKEEEVCDTLT IELQKKPGKGLGLSIVGKRNDT
GVFVSDIVKGGIADADGR LMQGDQILMVNGEDVRNATQEAVAL LKCSLGTVTLEVGRIKAGPFHSERRP
SQSSQVSEGLSSFTFPLSGSSTSELSSESSKNALASEIQGLRTVEMKKGPTDSLGISIAGGVGSP LGD
VPIFIAMMHPTGVAAQTQKLRVGDRI VTCGTSTEGMHTHTQAVNLLKNASGSIEMQV VAGDVS VVTGHQ
QEPASSSLSFTGLTSSSIFQDDLGP PQCKSITLERGPDGLGFSIVGGYSGPHGDLPIYVKTVFAKGAASE
DGR LKRGDQIIAVNGQSLEGVTHEEAVAILKRTKGTVTLMVLS
  
```

TRTRPLE - GFP Tag - V

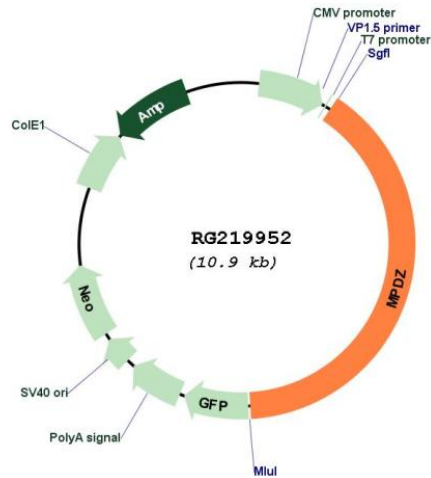
Restriction Sites:

SgfI-MluI

Cloning Scheme:



Plasmid Map:



ACCN: NM_003829

ORF Size: 6126 bp

OTI Disclaimer: Due to the inherent nature of this plasmid, standard methods to replicate additional amounts of DNA in *E. coli* are highly likely to result in mutations and/or rearrangements. Therefore, OriGene does not guarantee the capability to replicate this plasmid DNA. Additional amounts of DNA can be purchased from OriGene with batch-specific, full-sequence verification at a reduced cost. Please contact our customer care team at custsupport@origene.com or by calling 301.340.3188 option 3 for pricing and delivery.

The molecular sequence of this clone aligns with the gene accession number as a point of reference only. However, individual transcript sequences of the same gene can differ through naturally occurring variations (e.g. polymorphisms), each with its own valid existence. This clone is substantially in agreement with the reference, but a complete review of all prevailing variants is recommended prior to use. [More info](#)

OTI Annotation:	This clone was engineered to express the complete ORF with an expression tag. Expression varies depending on the nature of the gene.
Components:	The ORF clone is ion-exchange column purified and shipped in a 2D barcoded Matrix tube containing 10ug of transfection-ready, dried plasmid DNA (reconstitute with 100 ul of water).
Reconstitution Method:	<ol style="list-style-type: none">1. Centrifuge at 5,000xg for 5min.2. Carefully open the tube and add 100ul of sterile water to dissolve the DNA.3. Close the tube and incubate for 10 minutes at room temperature.4. Briefly vortex the tube and then do a quick spin (less than 5000xg) to concentrate the liquid at the bottom.5. Store the suspended plasmid at -20°C. The DNA is stable for at least one year from date of shipping when stored at -20°C.
RefSeq:	<u>NM_003829.1</u> , <u>NP_003820.1</u>
RefSeq Size:	7625 bp
RefSeq ORF:	6126 bp
Locus ID:	8777
UniProt ID:	<u>O75970</u>
Cytogenetics:	9p23
Domains:	PDZ, L27
Protein Pathways:	Tight junction
Gene Summary:	The protein encoded by this gene has multiple PDZ domains, which are hallmarks of protein-protein interactions. The encoded protein is known to interact with the HTR2C receptor and may cause it to clump at the cell surface. Multiple transcript variants encoding different isoforms have been found for this gene. [provided by RefSeq, Aug 2015]